



Property Highlights

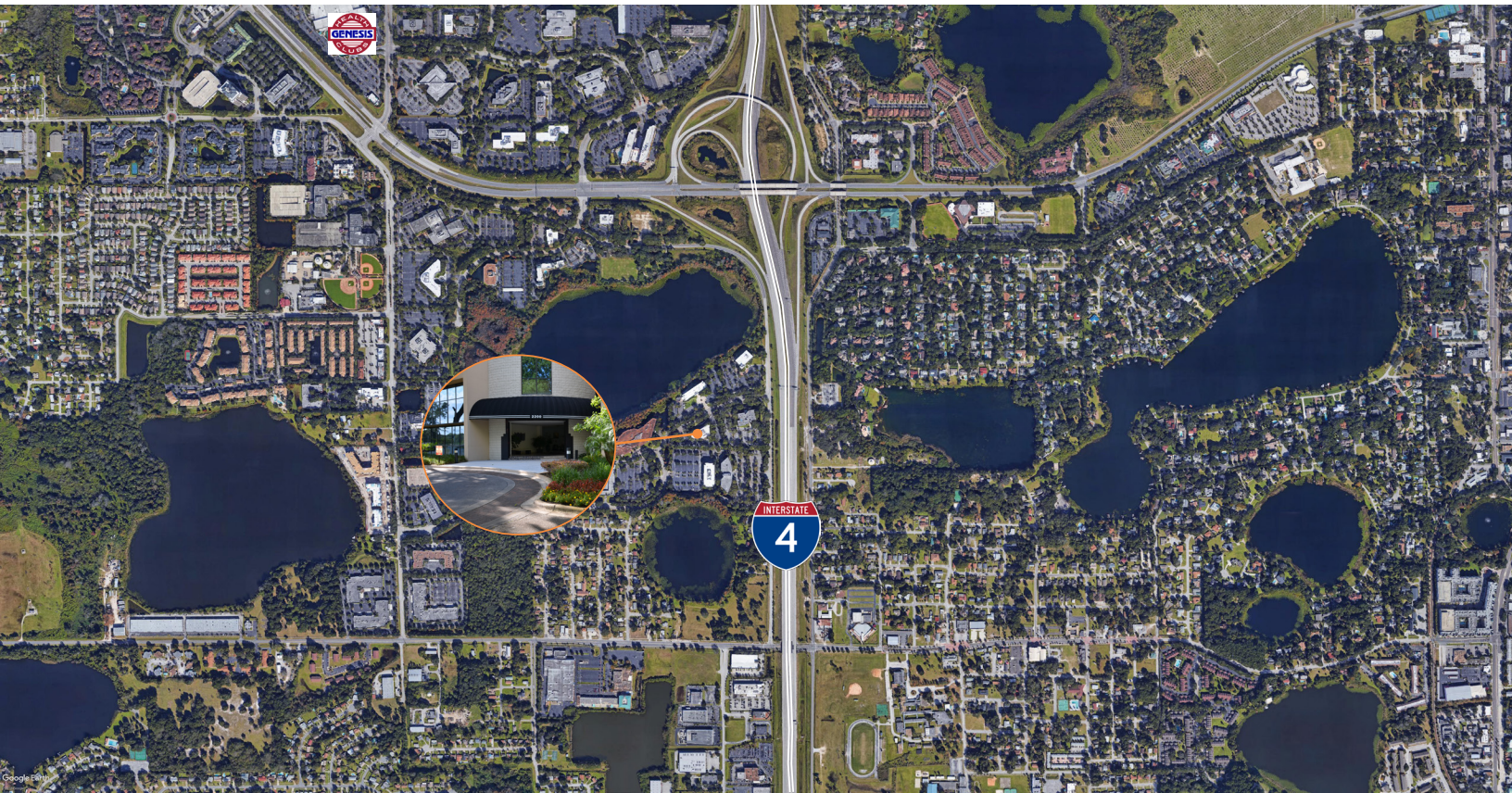
- 4-story class B office building totaling 59,798± sf
- 2,465± sf - 10,102± sf available
- Renovated lobby with seating
- Shared building conference room available to tenants
- Visible from Interstate-4
- Minutes to Downtown Orlando
- Nearby amenities include the Genesis Health Club, Sam Snead's Tavern and other restaurants
- Abundant parking

Emily Zinaich, Senior Vice President
D 407 440 6641
C 407 230 8797
emily.zinaich@avisonyoung.com

**AVISON
YOUNG**

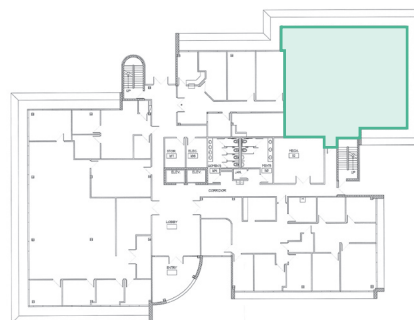
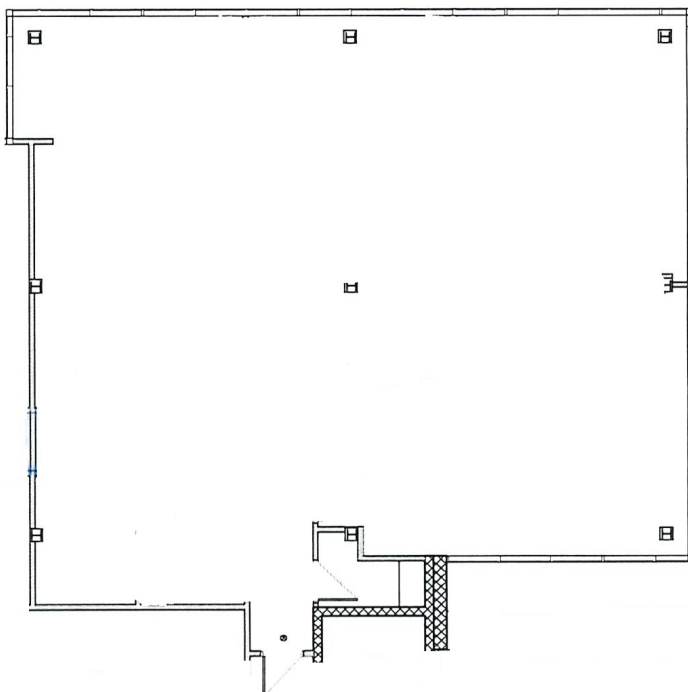
For Lease Lake Lucien Executive Center

2200 Lucien Way
Maitland, FL 32751



Emily Zinaich, Senior Vice President
D 407 440 6641
C 407 230 8797
emily.zinaich@avisonyoung.com

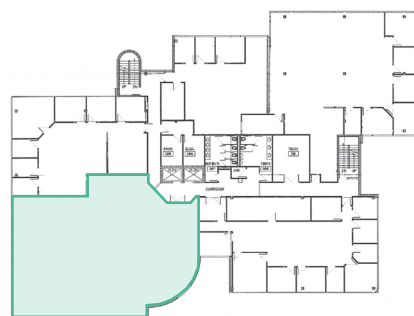
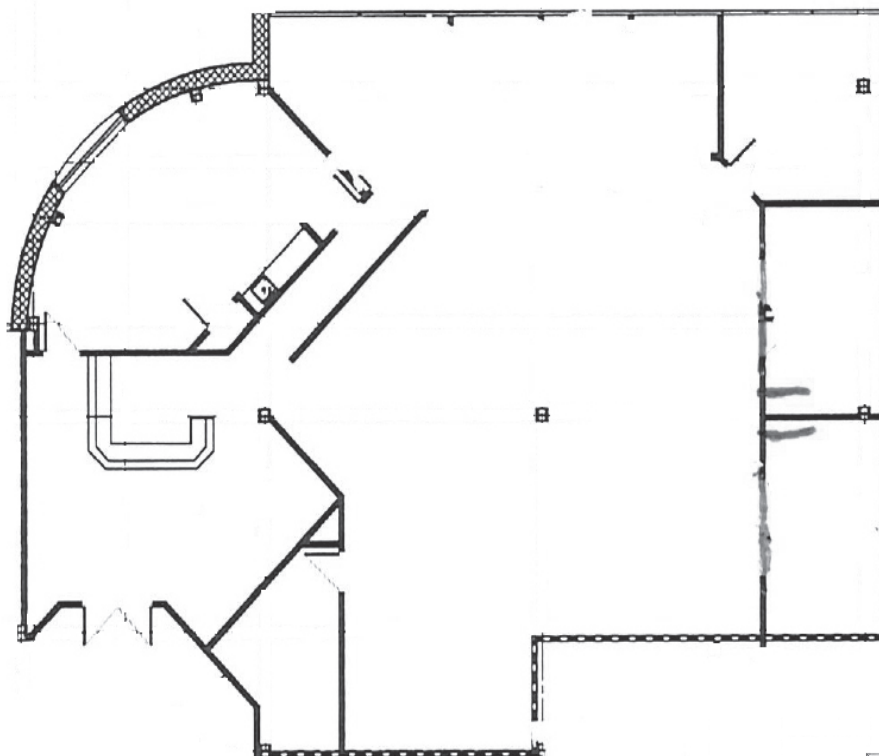
Suite 135 - 2,725± rsf



KEY PLAN

Emily Zinaich, Senior Vice President
D 407 440 6641
C 407 230 8797
emily.zinaich@avisonyoung.com

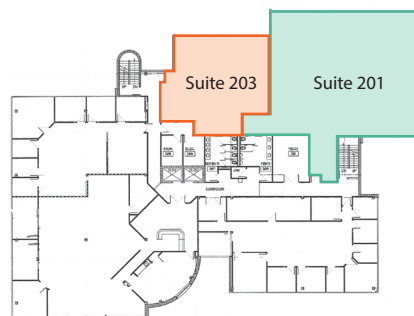
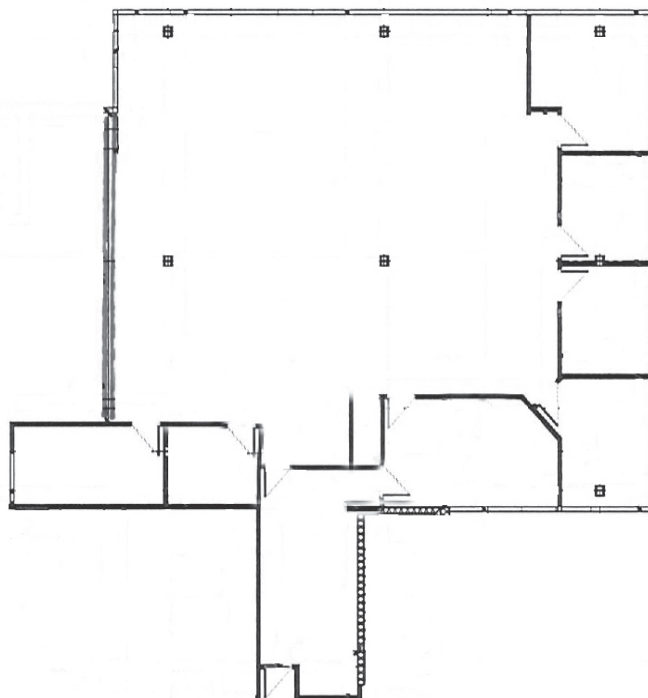
Suite 200 - 4,546± sf



KEY PLAN

Emily Zinaich, Senior Vice President
D 407 440 6641
C 407 230 8797
emily.zinaich@avisonyoung.com

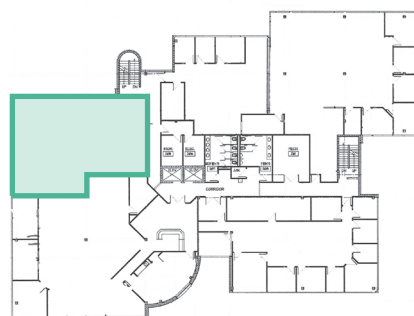
Suite 201 - 3,643± sf



KEY PLAN

Emily Zinaich, Senior Vice President
D 407 440 6641
C 407 230 8797
emily.zinaich@avisonyoung.com

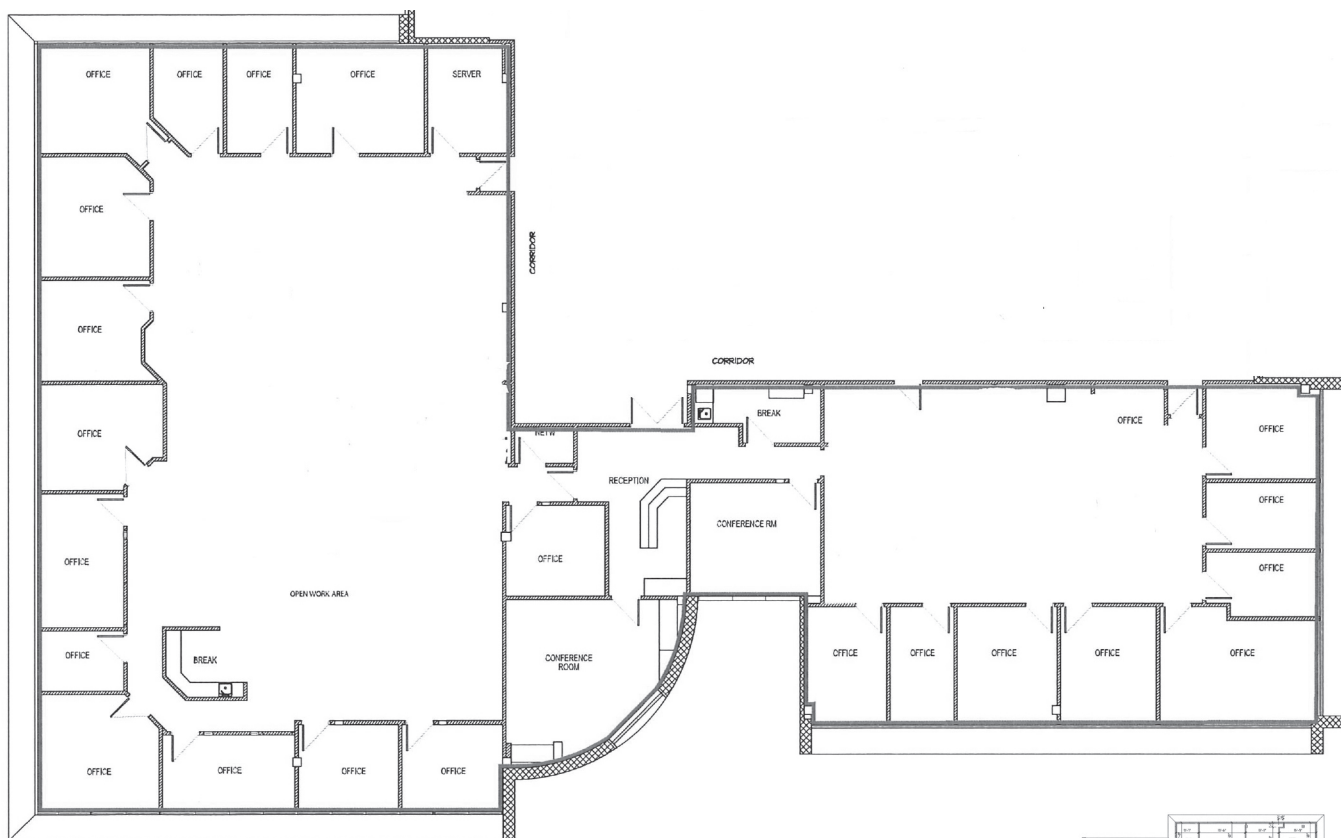
Suite 205 - 2,465± sf
Available July 1, 2024



KEY PLAN

Emily Zinaich, Senior Vice President
D 407 440 6641
C 407 230 8797
emily.zinaich@avisonyoung.com

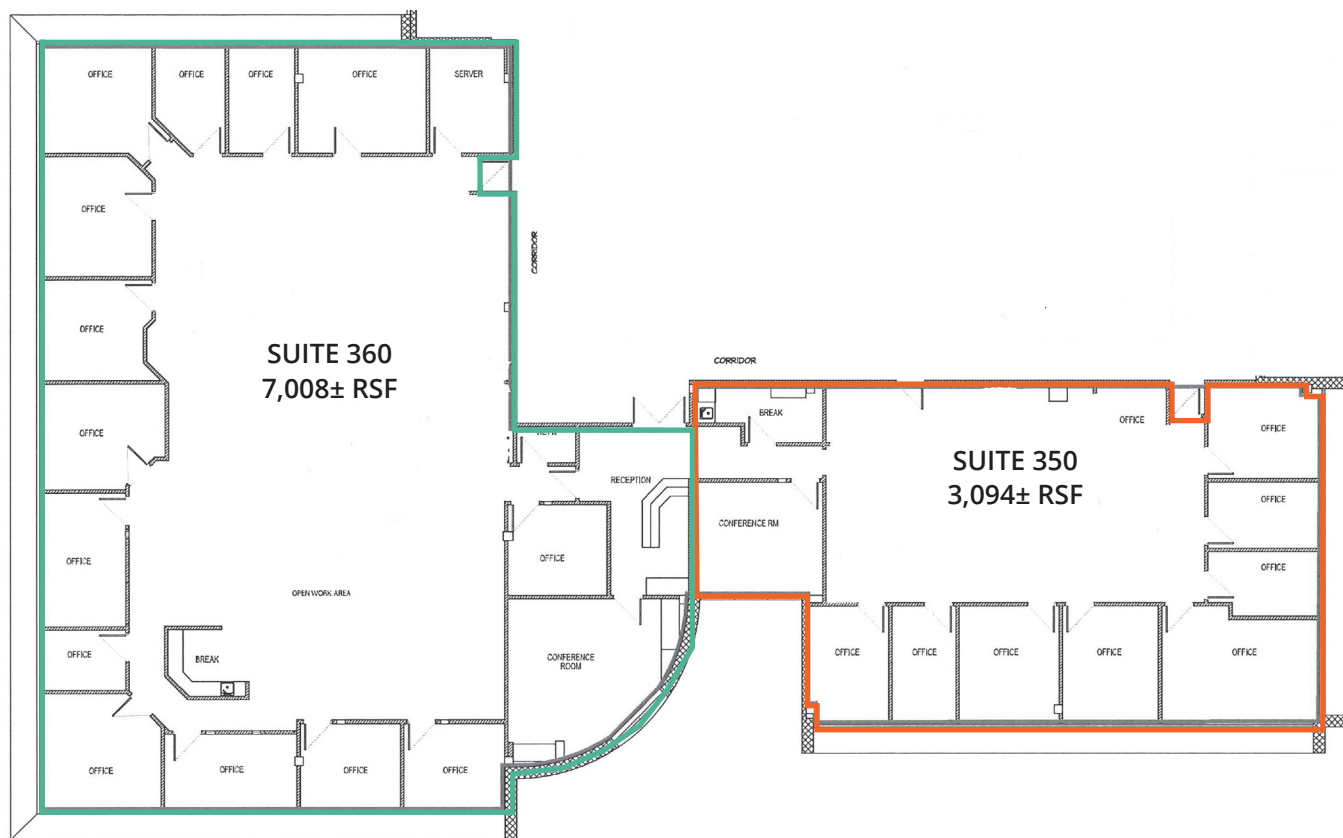
Suite 350 - 10,102± sf



KEY PLAN

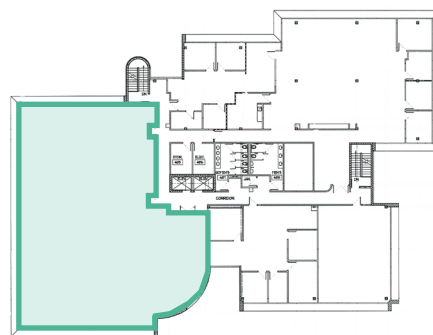
Emily Zinaich, Senior Vice President
D 407 440 6641
C 407 230 8797
emily.zinaich@avisonyoung.com

Suite 350 - Can be Subdivided



Emily Zinaich, Senior Vice President
D 407 440 6641
C 407 230 8797
emily.zinaich@avisonyoung.com

Suite 400 - 6,570± sf



KEY PLAN

Emily Zinaich, Senior Vice President
D 407 440 6641
C 407 230 8797
emily.zinaich@avisonyoung.com