

- ◆ South of Tanger Factory Outlets
- ◆ High Density Tourist Destination
- ◆ 52,088 (ADT) Average Daily Traffic Count

1.19+/- Acre Parkway Frontage

1819 Parkway Sevierville, TN 37862

For Lease
Vacant Land

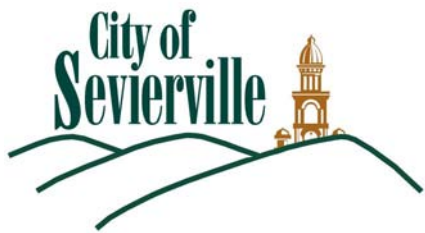
Contact: Keith Widmer
865-777-0000 Office
keithwidmer@sigreusa.com

Contact: Nick Widmer
865-567-4237 Cell
nickwidmer@sigreusa.com

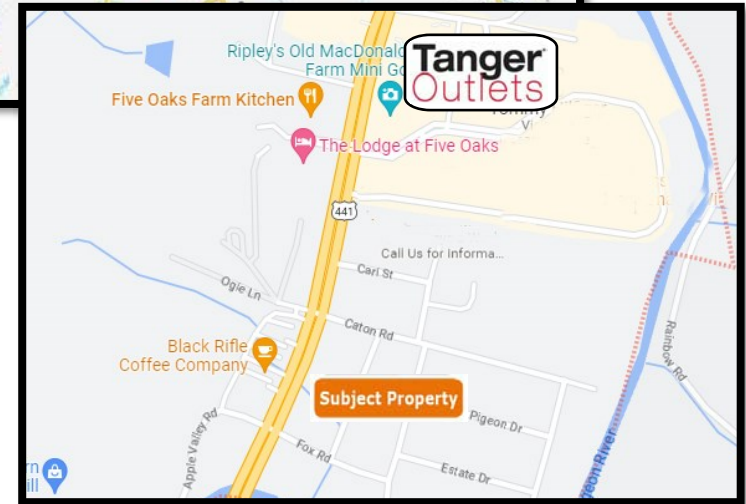
Contact: Ed Thompson
865-599-3320 Cell
edthompson@sigreusa.com

SIGREUSA.COM
4823 Old Kingston Pike | Suite 130
Knoxville, TN 37919

SIG
REAL ESTATE



- ◆ Located (12) miles from Exit 407
- ◆ Located (11) miles from Gatlinburg
- ◆ All Public Utilities available to Site



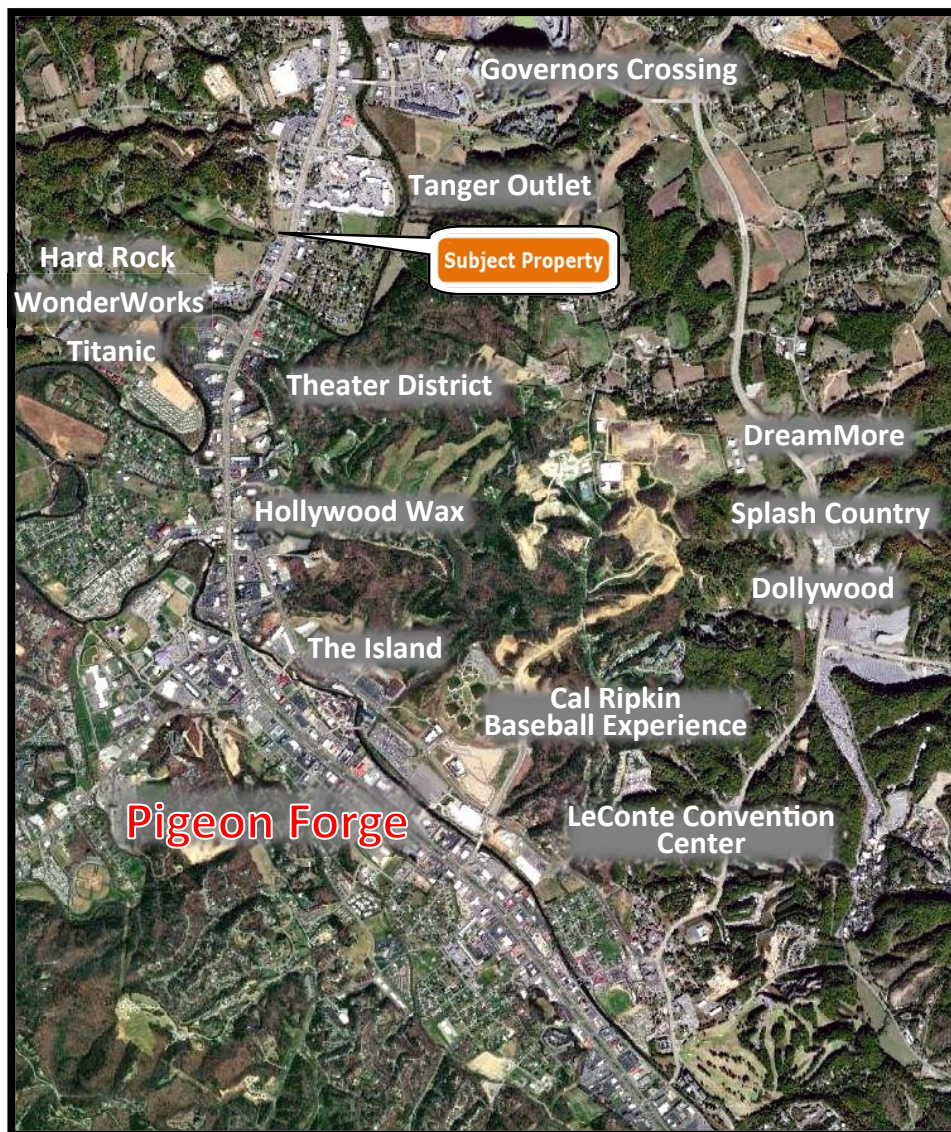
1819 Parkway Sevierville, TN 37862

For Lease

Contact: Ed Thompson
865-599-3320 Cell
edthompson@sigreusa.com

SiGREUSA.COM
4823 Old Kingston Pike | Suite 130
Knoxville, TN 37919





Market Information

SEVIER COUNTY

Sevier County is located about 20 miles southeast of Knoxville, TN. There are three cities and one town, and a population of approximately 100,000. The county's economic base is tourism, with approximately 14 million annual visitors. Total revenues are over \$3.5 Billion Dollars.

SEVIERVILLE

Sevierville Serves as the County Seat and the Main Entry Point along Winfield Dunn Parkway/ Highway 66 from Interstate 40/ Exit 407. Miller's Crossing is located across from Tanger Outlet Mall in Sevierville, which is comprised of 500,000 SF of Retail, Restaurants and Attractions. Located in the Restaurant and Theater District and North of Pigeon Forge, TN.

PIGEON FORGE

Home to Dollywood Amusement Park, Dollywood Splash Country, Dixie Stampede, and Dollywood DreamMore Resort. The Island opened in 2013 and is home to Jimmy Buffet's Margaritaville, Dick's Last Resort, Paula Deen's Kitchen, and various restaurants and retail. Cal Ripken's Baseball Experience opened in 2016 and generates \$42 million in revenue. The LeConte Center is the city's 232,000 square foot Convention and Events Facility. Annual 2021 Gross Receipts for the City of Pigeon Forge were approximately \$1.54 Billion Dollars.

GREAT SMOKY MOUNTAINS NATIONAL PARK

The Great Smoky Mountains National Park is the most visited National Park in the country with over 14 million visitors in 2021 and over 3.5 million entering through the Gatlinburg Entrance.

1.19+/- Acre Parkway Frontage

1819 Parkway Sevierville, TN 37862

Contact: Keith Widmer
865-777-0000 Office
keithwidmer@sigreusa.com

Contact: Nick Widmer
865-567-4237 Cell
nickwidmer@sigreusa.com

Contact: Ed Thompson
865-599-3320 Cell
edthompson@sigreusa.com

SIGREUSA.COM
4823 Old Kingston Pike | Suite 130
Knoxville, TN 37919

SIG
REAL ESTATE

For Lease

Vacant Land



1.19+/- Acre Parkway Frontage

1819 Parkway Sevierville, TN 37862

For Lease
Vacant Land

Contact: Keith Widmer
865-777-0000 Office
keithwidmer@sigreusa.com

Contact: Nick Widmer
865-567-4237 Cell
nickwidmer@sigreusa.com

Contact: Ed Thompson
865-599-3320 Cell
edthompson@sigreusa.com

SIGREUSA.COM
4823 Old Kingston Pike | Suite 130
Knoxville, TN 37919

SIG
REAL ESTATE



1.19+/- Acre Parkway Frontage

1819 Parkway Sevierville, TN 37862

For Lease

Vacant Land

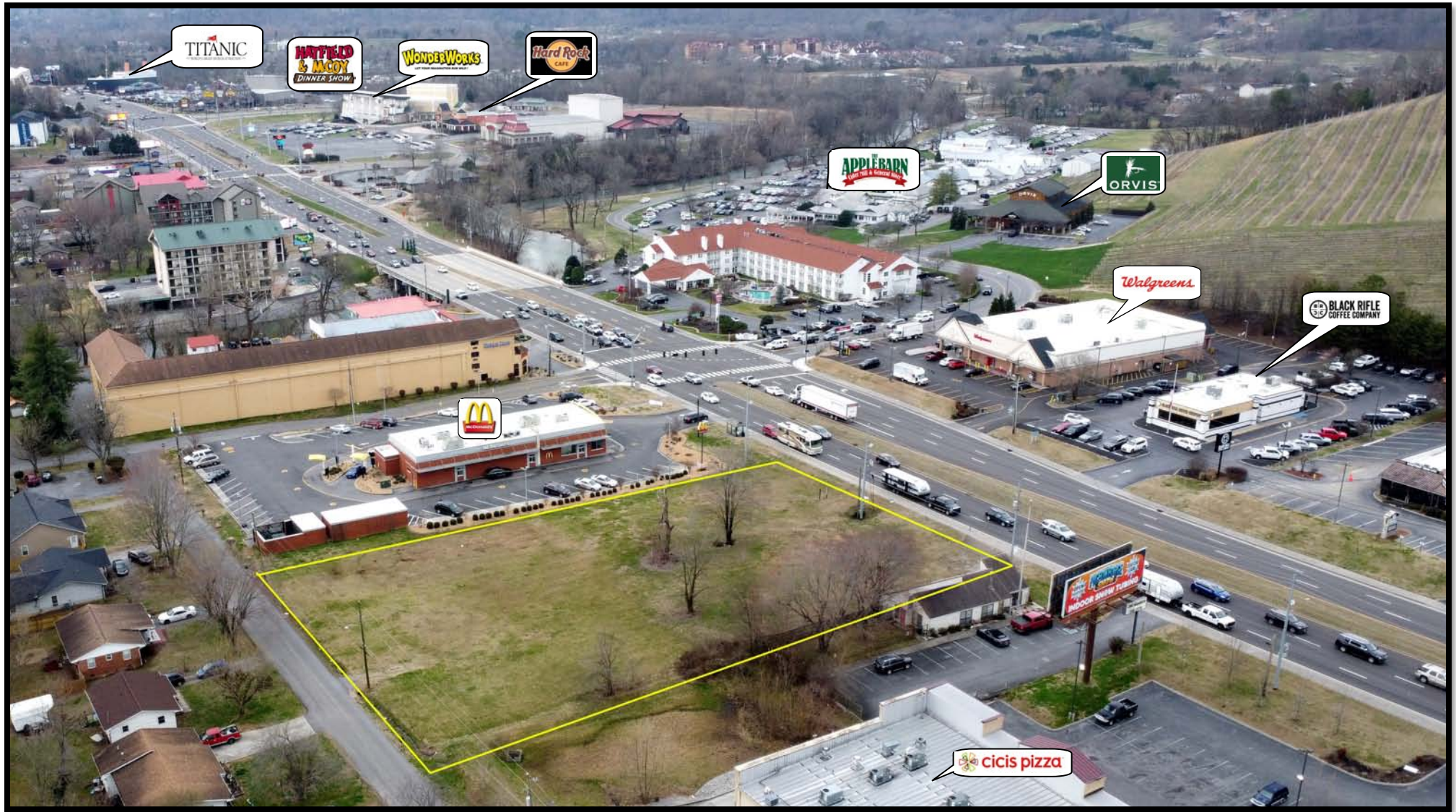
Contact: Keith Widmer
865-777-0000 Office
keithwidmer@sigreusa.com

Contact: Nick Widmer
865-567-4237 Cell
nickwidmer@sigreusa.com

Contact: Ed Thompson
865-599-3320 Cell
edthompson@sigreusa.com

SIGREUSA.COM
4823 Old Kingston Pike | Suite 130
Knoxville, TN 37919

SIG
REAL ESTATE



1.19+/- Acre Parkway Frontage

1819 Parkway Sevierville, TN 37862

For Lease
Vacant Land

Contact: Keith Widmer
865-777-0000 Office
keithwidmer@sigreusa.com

Contact: Nick Widmer
865-567-4237 Cell
nickwidmer@sigreusa.com

Contact: Ed Thompson
865-599-3320 Cell
edthompson@sigreusa.com

SIGREUSA.COM
4823 Old Kingston Pike | Suite 130
Knoxville, TN 37919

SIG
REAL ESTATE

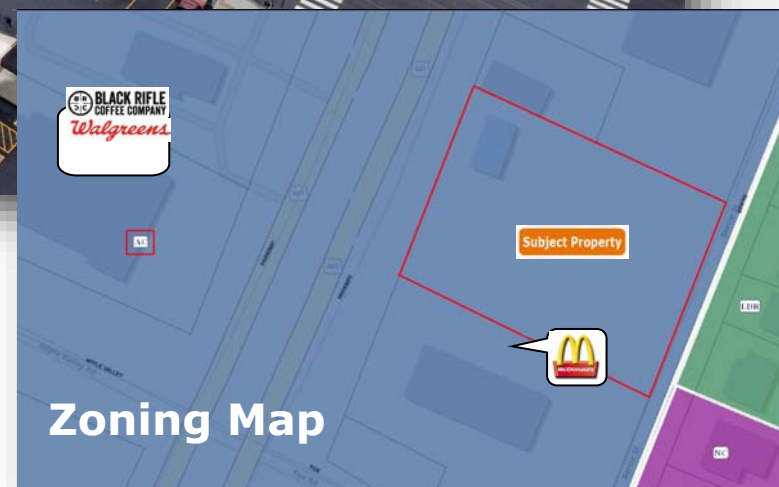


Property Information

- ◆ Zoning AC - Arterial Commercial District
- ◆ 200+/- Feet Parkway Frontage
- ◆ Access to Parkway and Bertie Street

1.19+/- Acre Parkway Frontage

1819 Parkway Sevierville, TN 37862



For Lease
Vacant Land

Contact: Keith Widmer
865-777-0000 Office
keithwidmer@sigreusa.com

Contact: Nick Widmer
865-567-4237 Cell
nickwidmer@sigreusa.com

Contact: Ed Thompson
865-599-3320 Cell
edthompson@sigreusa.com

SIGREUSA.COM
4823 Old Kingston Pike | Suite 130
Knoxville, TN 37919

SIG
REAL ESTATE



For Lease

Vacant Land

SiGREUSA.COM
4823 Old Kingston Pike | Suite 130
Knoxville, TN 37919



Disclaimer

All materials and information received or derived from SiG Real Estate, LLC (hereinafter collectively "SiG Real Estate"), its directors, officers, agents, advisors, affiliates and/or any third party sources are provided without representation or warranty by its directors, officers, agents, advisors, or affiliates as to completeness, veracity, or accuracy, condition of the property, compliance or lack of compliance with applicable governmental requirements, developability or suitability, financial performance of the property, projected financial performance of the property for any party's intended use or any and all other matters.

Neither SiG Real Estate its directors, officers, agents, advisors, or affiliates makes any representation or warranty, express or implied, as to accuracy or completeness of the any materials or information provided, derived, or received.

Materials and information from any source, whether written or verbal, that may be furnished for review are not a substitute for a party's active conduct of its own due diligence to determine these and other matters of significance to such party. SiG Real Estate will not investigate or verify any such matters or conduct due diligence for a party unless otherwise agreed in writing.

EACH PARTY SHALL CONDUCT ITS OWN INDEPENDENT INVESTIGATION AND DUE DILIGENCE.

Any party contemplating or under contract or in escrow for a transaction is urged to verify all information and to conduct their own inspections and investigations including through appropriate third-party independent professionals selected by such party.

All financial data should be verified by the party including by obtaining and reading applicable documents and reports and consulting appropriate independent professionals. SiG Real Estate makes no warranties and/or representations regarding the veracity, completeness, or relevance of any financial data or assumptions. SiG Real Estate does not serve as a financial advisor to any party regarding any proposed transaction. All data and assumptions regarding financial performance, including that used for financial modeling purposes, may differ from actual data or performance.

Any estimates of market rents and/or projected rents that may be provided to a party do not necessarily mean that rents can be established at or increased to that level. Parties must evaluate any applicable contractual and governmental limitations as well as market conditions, vacancy factors and other issues in order to determine rents from or for the property.

Legal questions should be discussed by the party with an attorney. Tax questions should be discussed by the party with a certified public accountant or tax attorney. Title questions should be discussed by the party with a title officer or attorney. Questions regarding the condition of the property and whether the property complies with applicable governmental requirements should be discussed by the party with appropriate engineers, architects, contractors, other consultants and governmental agencies.

All properties and services are marketed by SiG Real Estate in compliance with all applicable fair housing and equal opportunity laws.

1.19+/- Acre Parkway Frontage

1819 Parkway Sevierville, TN 37862

For Lease
Vacant Land

Contact: Keith Widmer
865-777-0000 Office
keithwidmer@sigreusa.com

Contact: Nick Widmer
865-567-4237 Cell
nickwidmer@sigreusa.com

Contact: Ed Thompson
865-599-3320 Cell
edthompson@sigreusa.com

SIGREUSA.COM
4823 Old Kingston Pike | Suite 130
Knoxville, TN 37919

SIG
REAL ESTATE