

16670 Oriole Road

Fort Myers, FL

Key Facts

| | |
|-----------------|------------------|
| Property type | Industrial space |
| Building size | 250,000 SF |
| Space available | 75,354 SF |



Contact Us

Learn more about this property or schedule a tour by reaching out to our local investment and leasing officer.

Sander Smith

+1 (215) 870-2032

sander.smith@eqtexeter.com

16670 Oriole Road

Fort Myers, FL

BUILDING SPECIFICATIONS

Total Building Size: 250,000 SF

Building Space Available: 75,354 SF

Office Space Available: 2,857 SF (new construction)

Dock-High Doors: 5 (potential to add up to 14)

Drive-In Doors: 2

Building Depth: 250'

Column Spacing: 50' x 50'

Truck Court: 180'

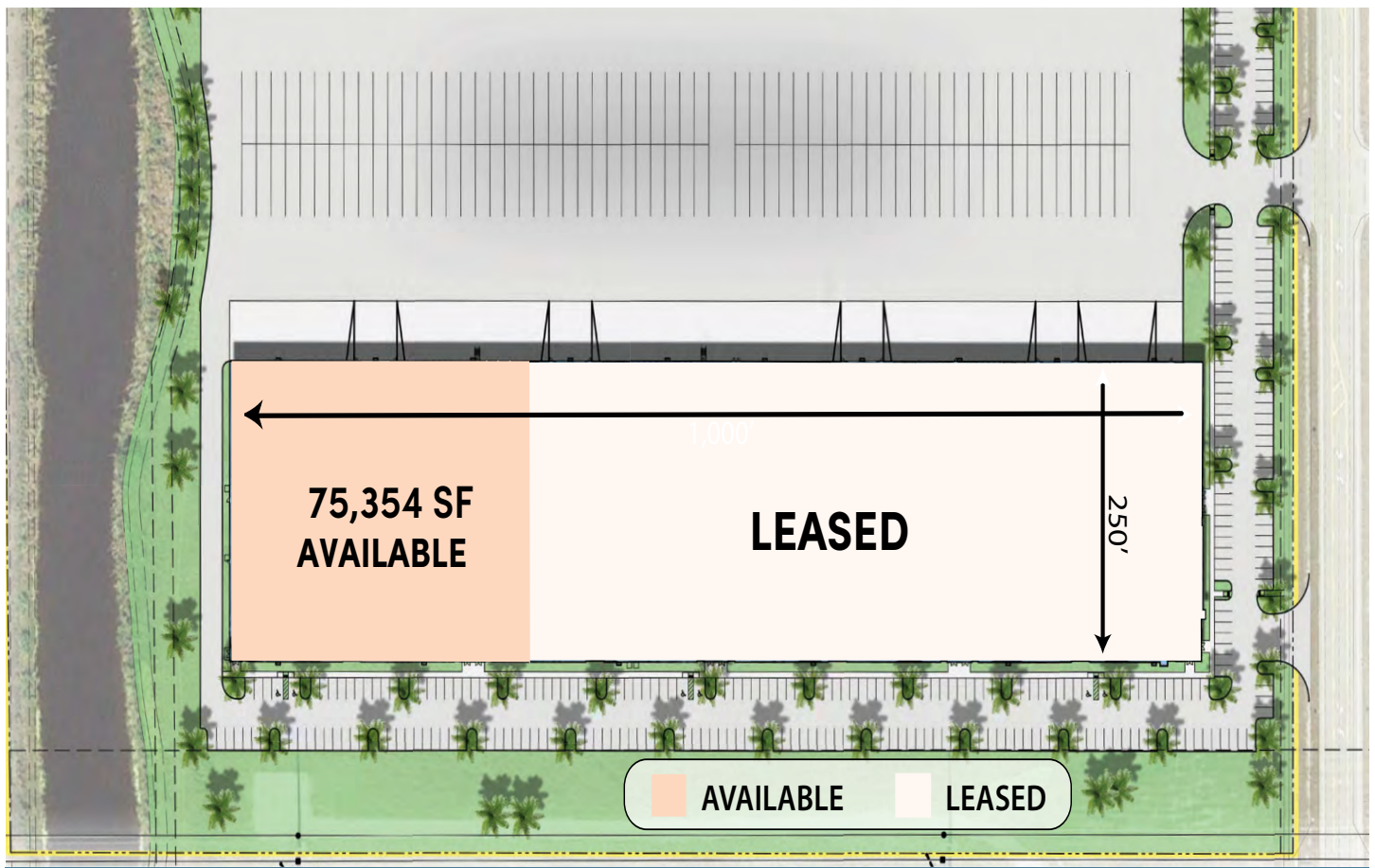
Clear Height: 32'

Surface Parking Spaces: 84

Trailer Parking Spaces: 24

Lighting: LED

Fire Protection: ESFR Sprinkler System



Contact Us

Learn more about this property or schedule a tour by reaching out to our local investment and leasing officer.

Sander Smith

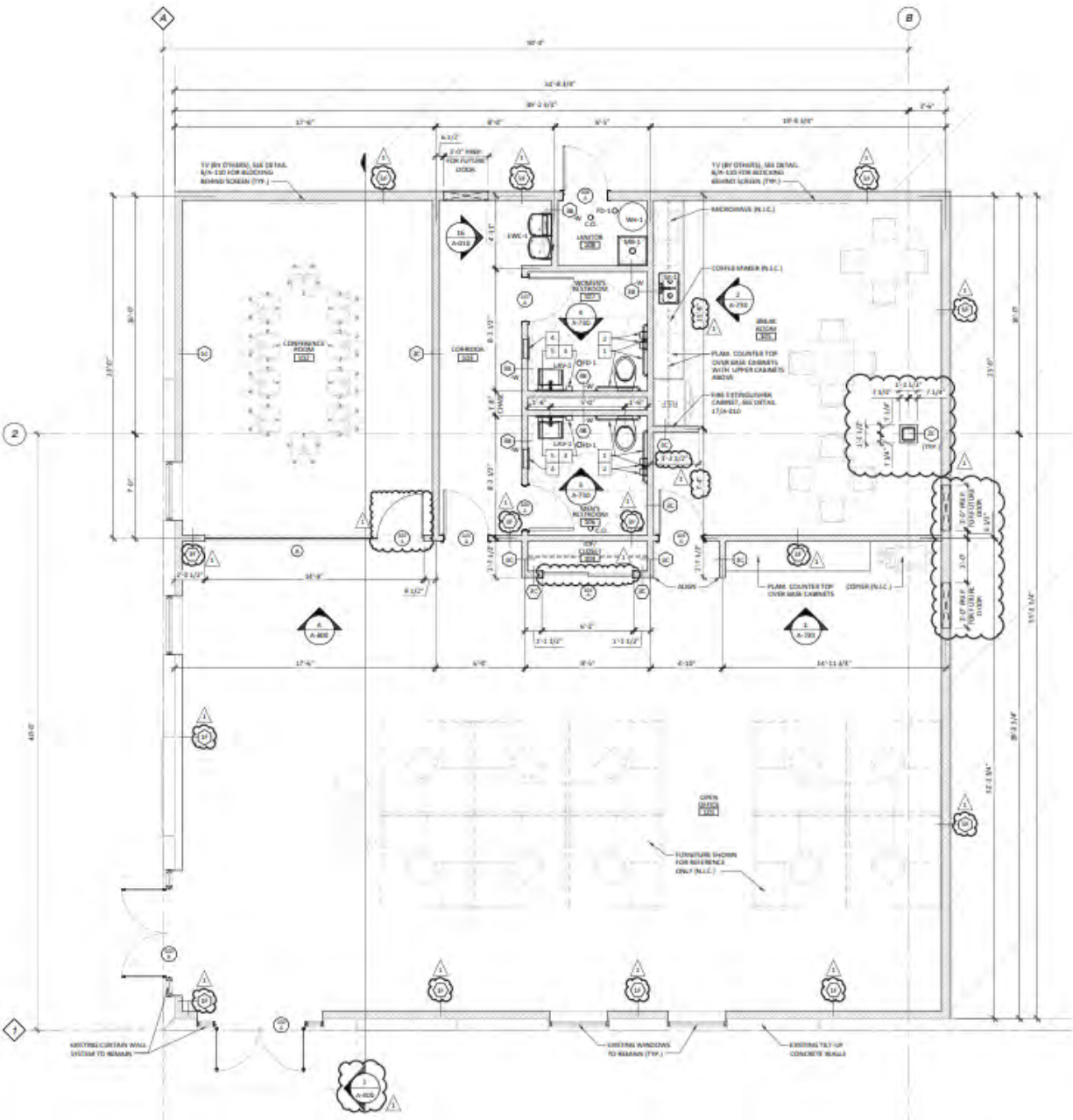
+1 (215) 870-2032

sander.smith@eqtexeter.com

16670 Oriole Road

Fort Myers, FL

OFFICE PLAN



Contact Us

Learn more about this property or schedule a tour by reaching out to our local investment and leasing officer.

Sander Smith

+1 (215) 870-2032

sander.smith@eqtexeter.com