

±3,657 - 7,315 SF Office/Warehouse/Flex Space



For Lease

# 1550 Gilbreth Road Burlingame, California



## Property Highlights

- Excellent office and warehouse space with storefront entrance
  - \* ±2,613 SF Office (35%)
  - \* ±4,702 SF Warehouse (65%)
- Divisible to two ±3,657 SF Units
- Hwy 101 Freeway Visibility with building signage available
- 3 Restrooms, including 1 ADA restroom
- 2 Grade-level Doors
- Power: 400A / 120-208V (To Be Verified)
- Clear Height: 14 Feet
- Easy access from Hwy 101 off Broadway Ave exit
- Ample Parking
- Rental Rate: \$2.45 / SF / Month Industrial Gross

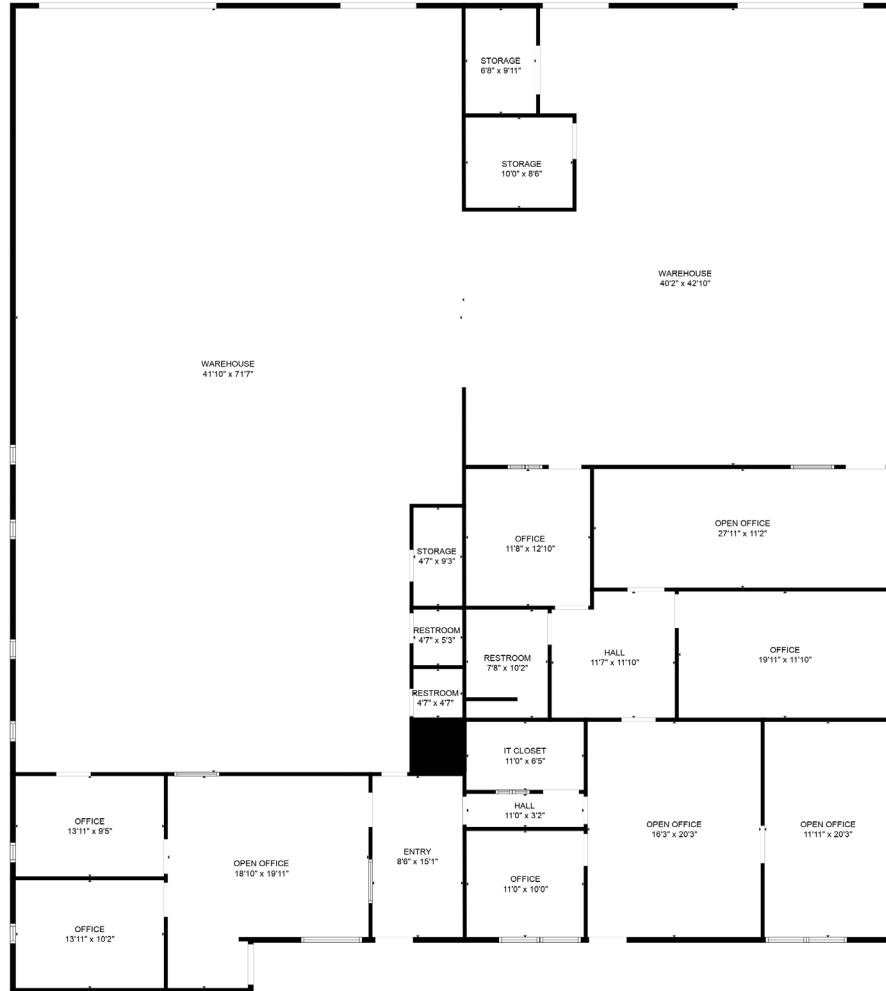
## Contact Us

**Marshall Hydorn**  
Executive Vice President  
+1 650 577 2990  
marshall.hydorn@cbre.com  
Lic. 00960660

**Matt Murray**  
Associate  
+1 650 577 2934  
matt.murray@cbre.com  
Lic. 02083830

© 2024 CBRE, Inc. All rights reserved. This information has been obtained from sources believed reliable but has not been verified for accuracy or completeness. CBRE, Inc. makes no guarantee, representation or warranty and accepts no responsibility or liability as to the accuracy, completeness, or reliability of the information contained herein. You should conduct a careful, independent investigation of the property and verify all information. Any reliance on this information is solely at your own risk. CBRE and the CBRE logo are service marks of CBRE, Inc. All other marks displayed on this document are the property of their respective owners, and the use of such marks does not imply any affiliation with or endorsement of CBRE. Photos herein are the property of their respective owners. Use of these images without the express written consent of the owner is prohibited.

# Floor Plan



FLOOR PLAN CREATED BY CUBICASA APP. MEASUREMENTS DEEMED HIGHLY RELIABLE BUT NOT GUARANTEED.

## Contact Us

**Marshall Hydorn**  
Executive Vice President  
+1 650 577 2990  
marshall.hydorn@cbre.com  
Lic. 00960660

**Matt Murray**  
Associate  
+1 650 577 2934  
matt.murray@cbre.com  
Lic. 02083830

1550 Gilbreth Road  
Burlingame, California

For Lease



## Contact Us

**Marshall Hydorn**  
Executive Vice President  
+1 650 577 2990  
marshall.hydorn@cbre.com  
Lic. 00960660

**Matt Murray**  
Associate  
+1 650 577 2934  
matt.murray@cbre.com  
Lic. 02083830



[www.cbre.com/sanfranciscopeninsula](http://www.cbre.com/sanfranciscopeninsula)

**CBRE**