

155 28TH STREET SW
WYOMING, MICHIGAN

VACANT LAND FOR SALE
5.095 Acres Available



**SIGNATURE
ASSOCIATES**
KNOW SIGNATURE | KNOW RESULTS

HARD CORNER



PROPERTY FEATURES

- 5.095 acres available
- Zoned FBC-CE
- Public utilities available
- Sale Price: ~~\$4,100,000~~ \$3,950,000

Comments: Prime 5.00 acres on lighted, hard-corner intersection of Buchanan Avenue and 28th Street. Over 500' of Frontage with over 44,000 cars per day and less than 200' from US-131 Interchange. Site has ability to have drive-thru. Great for a variety of uses. Zoned FBC-CE. Call broker for more information on zoning and use.



For more information, please contact:

JOE RIZQALLAH

(616) 822 6310

jrizzqallah@signatureassociates.com

SIGNATURE ASSOCIATES

1188 East Paris Ave SE, Suite 220

Grand Rapids, MI 49546

www.signatureassociates.com

155 28th Street SW – Wyoming, Michigan

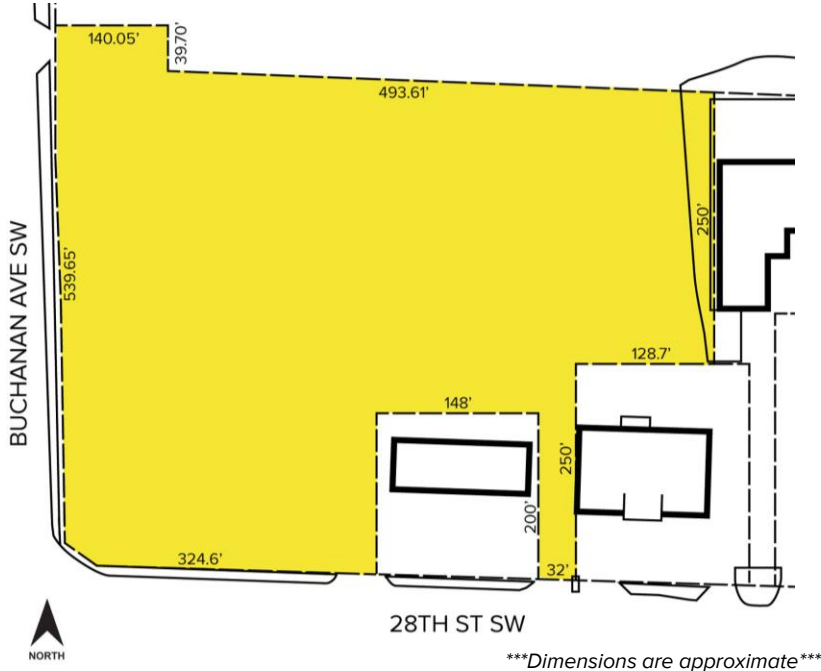
Vacant Land For Sale

5.095
Acres
AVAILABLE

Neighboring Retail



Site Plan



DEMOGRAPHICS		
	POPULATION	MED. HH INCOME
1 MILE	14,736	\$68,455
3 MILE	130,797	\$68,693
5 MILE	298,619	\$76,280

TRAFFIC COUNTS (TWO-WAY)	
44,932	28 th Street between US 131 & Division Ave
32,362	28 th Street east of Division Avenue
9,292	Buchanan Avenue north of 28 th Street
7,452	Buchanan Avenue south of 28 th Street

For more information, please contact:

JOE RIZQALLAH
(616) 822 6310
jrizzqallah@signatureassociates.com

SIGNATURE ASSOCIATES
1188 East Paris Ave SE, Suite 220
Grand Rapids, MI 49546
www.signatureassociates.com