

INDUSTRIAL BUILDING *FOR SALE/LEASE*

2316 E 38TH ST, VERNON, CA 90058



4,936 SF Building For Sale/For Lease

Beautiful creative building

Bow truss roof with skylights

Great natural light

Sandblasted beams and brick walls

Clear span

\$1.10

LEASE RATE/SF

\$1.5M

SALE PRICE

\$303.89

SALE PRICE/SF

RICHARD ABDULIAN

213.225.7232

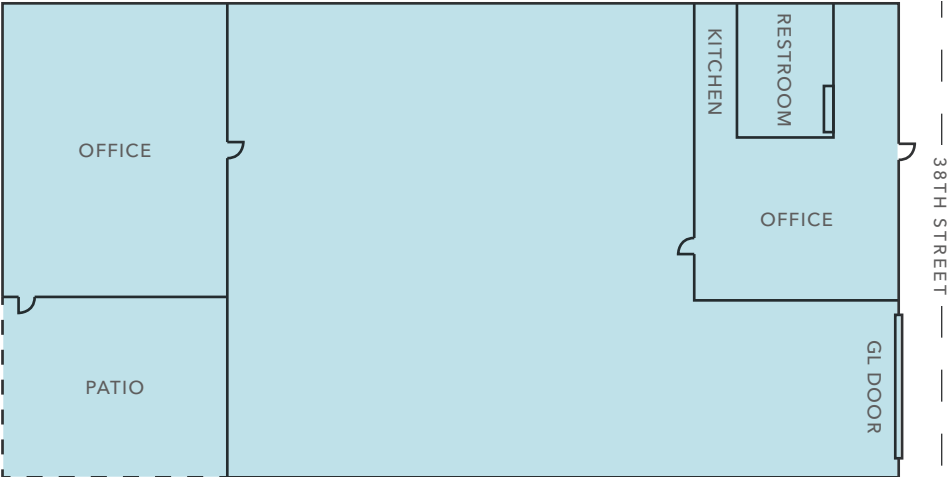
richard.abdulian@kidder.com

LIC N° 00884948

KIDDER.COM

This information supplied herein is from sources we deem reliable. It is provided without any representation, warranty, or guarantee, expressed or implied as to its accuracy. Prospective Buyer or Tenant should conduct an independent investigation and verification of all matters deemed to be material, including, but not limited to, statements of income and expenses. Consult your attorney, accountant, or other professional advisor.

**km Kidder
Mathews**



Not drawn to scale

PROPERTY INFORMATION

BUILDING SIZE	4,936 SF
OFFICE SIZE	1,704 SF
LAND SIZE	5,425 SF
YEAR BUILT	1937
LEASE RATE/MO	\$5,430
LEASE RATE/SF	\$1.10
SALE PRICE	\$1,500,000
SALE PRICE/SF	\$303.89
ZONING	VEM
CLEAR HEIGHT	12'
GL LOADING	1 - 9'x11'



KIDDER.COM

This information supplied herein is from sources we deem reliable. It is provided without any representation, warranty, or guarantee, expressed or implied as to its accuracy. Prospective Buyer or Tenant should conduct an independent investigation and verification of all matters deemed to be material, including, but not limited to, statements of income and expenses. Consult your attorney, accountant, or other professional advisor.

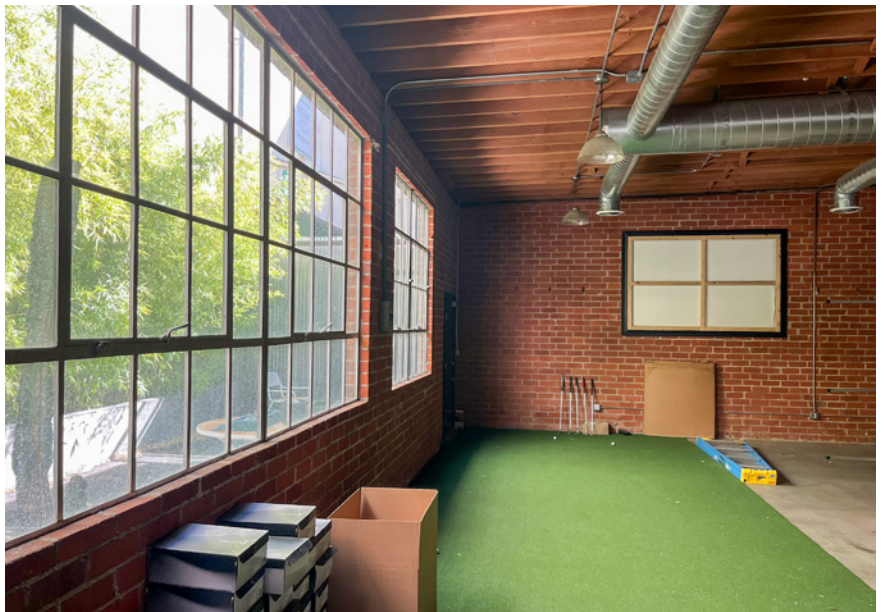




KIDDER.COM

This information supplied herein is from sources we deem reliable. It is provided without any representation, warranty, or guarantee, expressed or implied as to its accuracy. Prospective Buyer or Tenant should conduct an independent investigation and verification of all matters deemed to be material, including, but not limited to, statements of income and expenses. Consult your attorney, accountant, or other professional advisor.

km Kidder Mathews



*For more information,
please contact*

RICHARD ABDULIAN
213.225.7232
richard.abdulian@kidder.com
LIC N° 00884948

KIDDER.COM

This information supplied herein is from sources we deem reliable. It is provided without any representation, warranty, or guarantee, expressed or implied as to its accuracy. Prospective Buyer or Tenant should conduct an independent investigation and verification of all matters deemed to be material, including, but not limited to, statements of income and expenses. Consult your attorney, accountant, or other professional advisor.

