

±21,075 SF Industrial in South St. Louis

Office/Warehouse/Maintenance Facility

3242 S. Kingshighway Blvd
St. Louis, MO 63139
www.cbre.com/stlouis

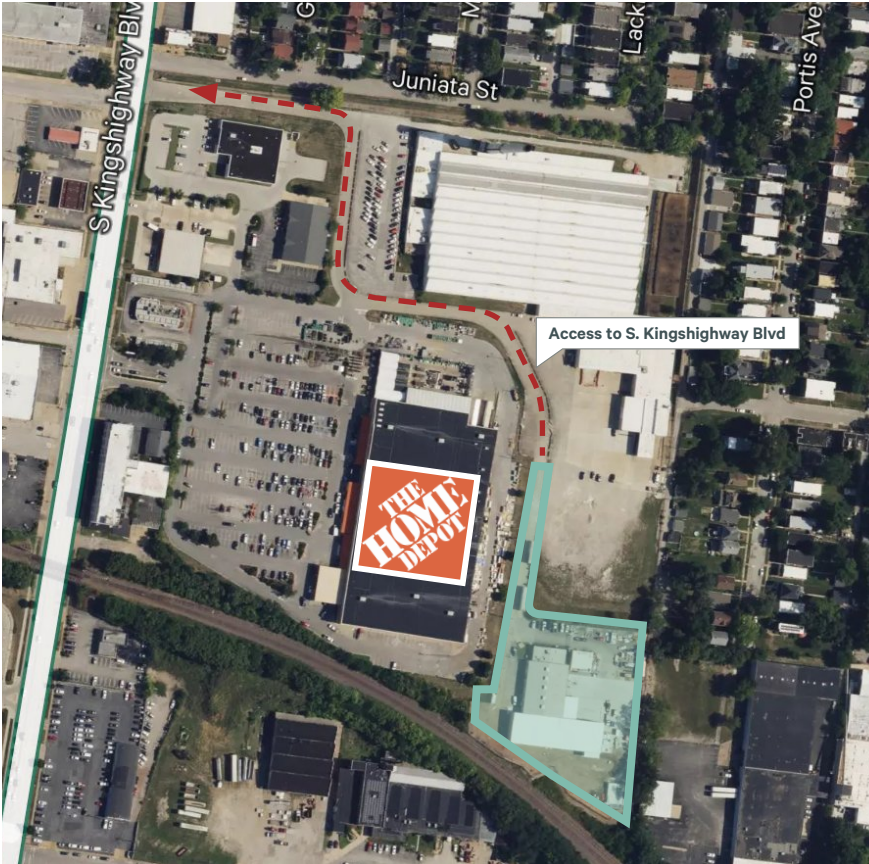
Excellent South City Location with Convenient Access to I-44

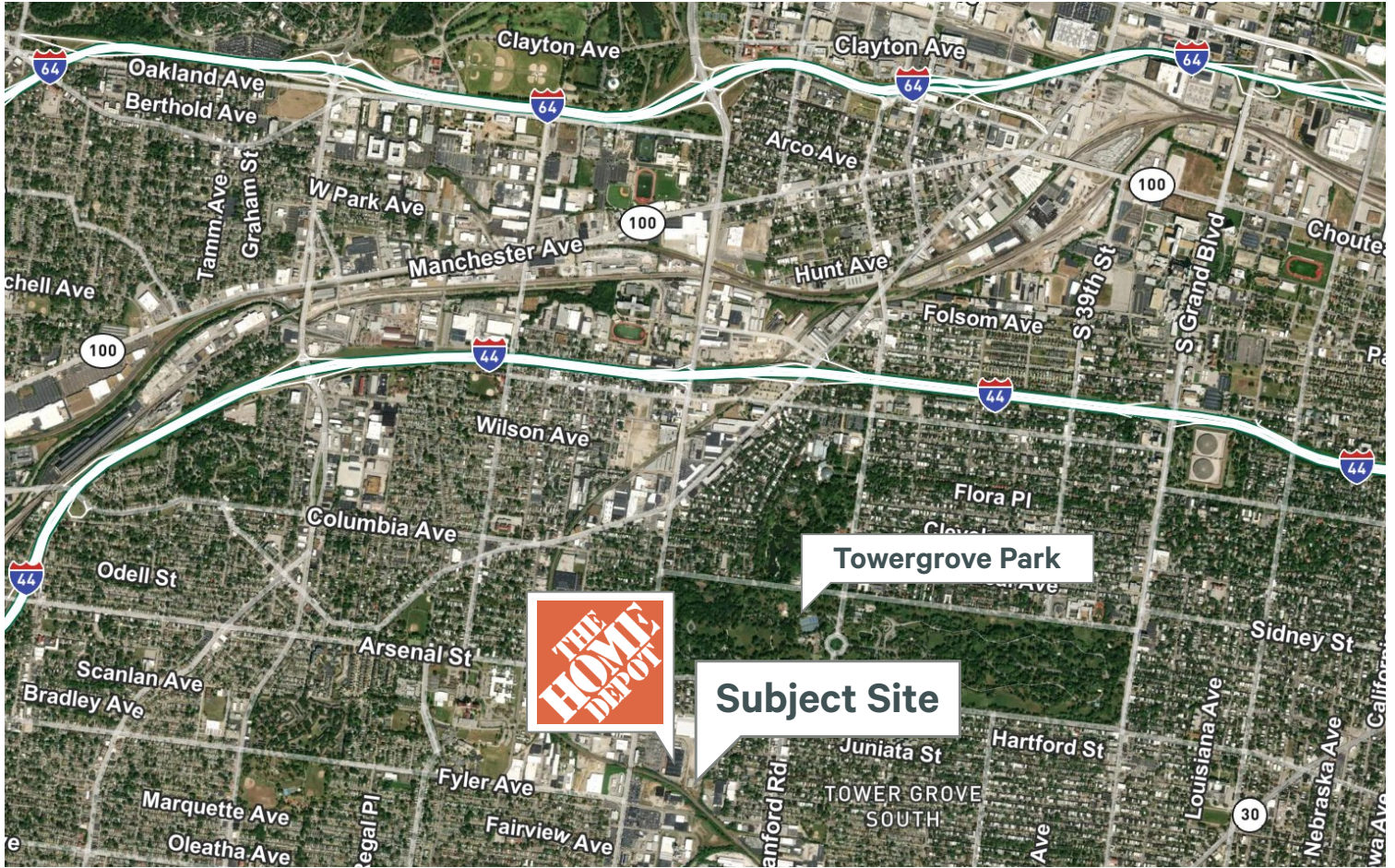


Property Features

- + ±21,075 SF office/warehouse/maintenance facility
- + ±4,500 SF office (5 offices with private restroom & shower)
- + 2.75 acre paved and secure lot with electrified security fencing, automatic gate access, and exterior pole lights
- + Outside storage permitted – Zoned K, Unrestricted in the City of St. Louis
- + 5 drive-in doors (12'w x 14'h)
- + 1 dock, 1 dock platform
- + 800 Amp 277/480 Volt, 3 Phase electric
- + Radiant and gas fired warehouse heat
- + (1) HVLS fan
- + Compressed air lines in place
- + Ideally suited for vehicle maintenance, general contracting, and warehousing
- + Well located in South St. Louis City behind Home Depot with convenient access to I-44 & I-64.
- + Sale price: **\$2,400,000**
- + Lease rate: **Contact Broker**

| | Original Building | Expansion Area |
|--------------|-------------------|----------------|
| Total SF | ±10,275 SF | ±10,800 SF |
| Year Built | 2000 | 2022 |
| Clear Height | 14' – 15'7" | 20' |





Contact Us

Brian Bush

Senior Vice President
+1 314 655 6052
brian.bush@cbre.com

Rick Messey

Senior Vice President
+1 314 607 9108
rick.messey@cbre.com

© 2025 CBRE, Inc. All rights reserved. This information has been obtained from sources believed reliable, but has not been verified for accuracy or completeness. You should conduct a careful, independent investigation of the property and verify all information. Any reliance on this information is solely at your own risk. CBRE and the CBRE logo are service marks of CBRE, Inc. All other marks displayed on this document are the property of their respective owners, and the use of such logos does not imply any affiliation with or endorsement of CBRE. Photos herein are the property of their respective owners. Use of these images without the express written consent of the owner is prohibited.