

For Lease

CBRE

INDUSTRIAL SHOP/WAREHOUSE w/OUTDOOR STORAGE SPACE FOR LEASE

PRIME LOCATION

7649 CONCORD BLVD,
INVERGROVE HEIGHTS,
MN 55076



PROPERTY HIGHLIGHTS



- Available Est. 9,500 SF Building
- 2 Overhead Doors (14H x 24W)
- 1 Overhead Door (10H X 14W)
- Est. 4,500 SF 10Ft Clear Height
- Est. 5,000 SF at 14Ft Clear Height
- Floor drains w/ Oil-Water Separator
- 1 Full Drive-thru Maintenance Bay

*Est. .50 acres outdoor storage space



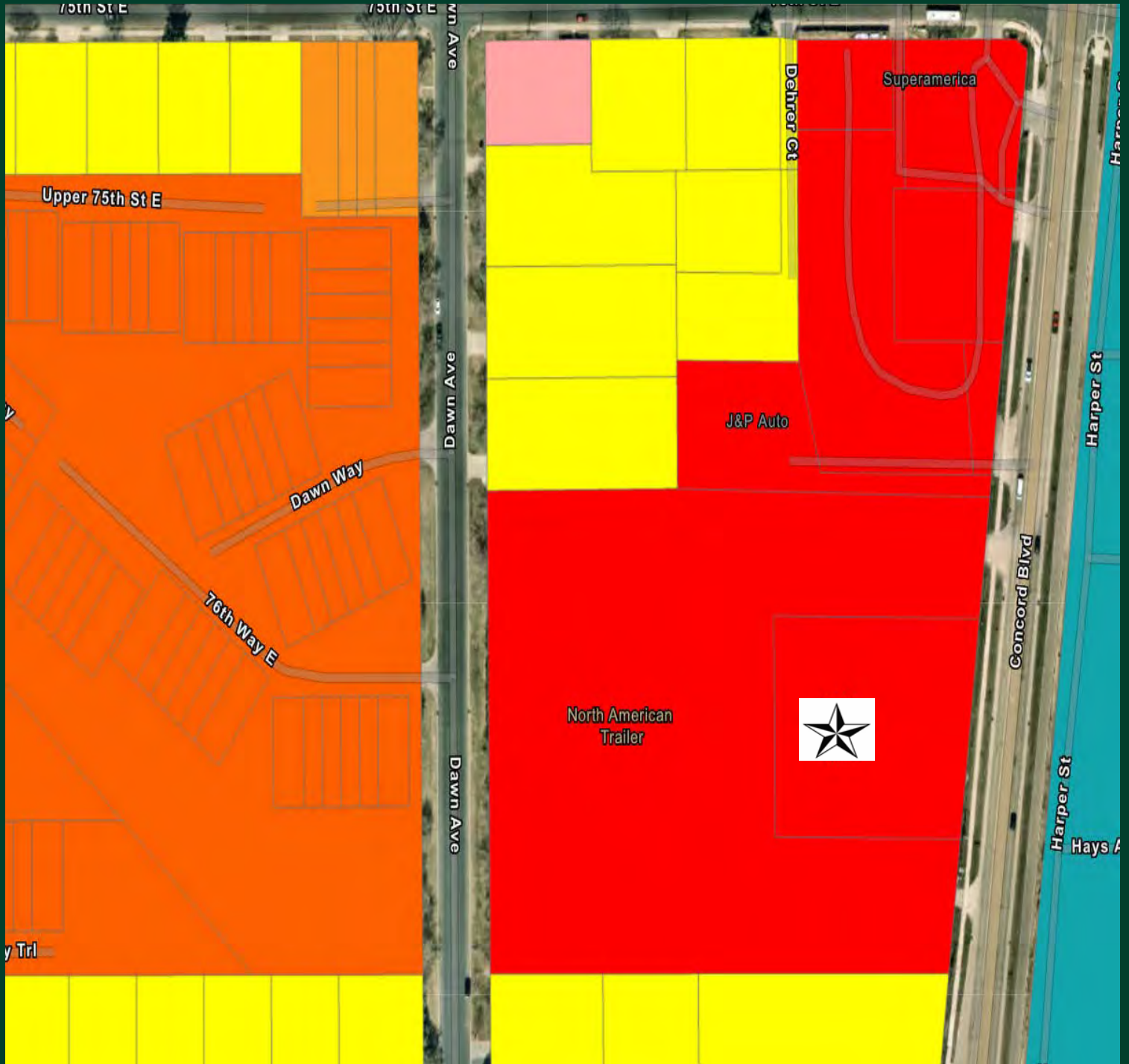
Traffic Counts

Concord St. S. 15,300 VPD

Additional Photos

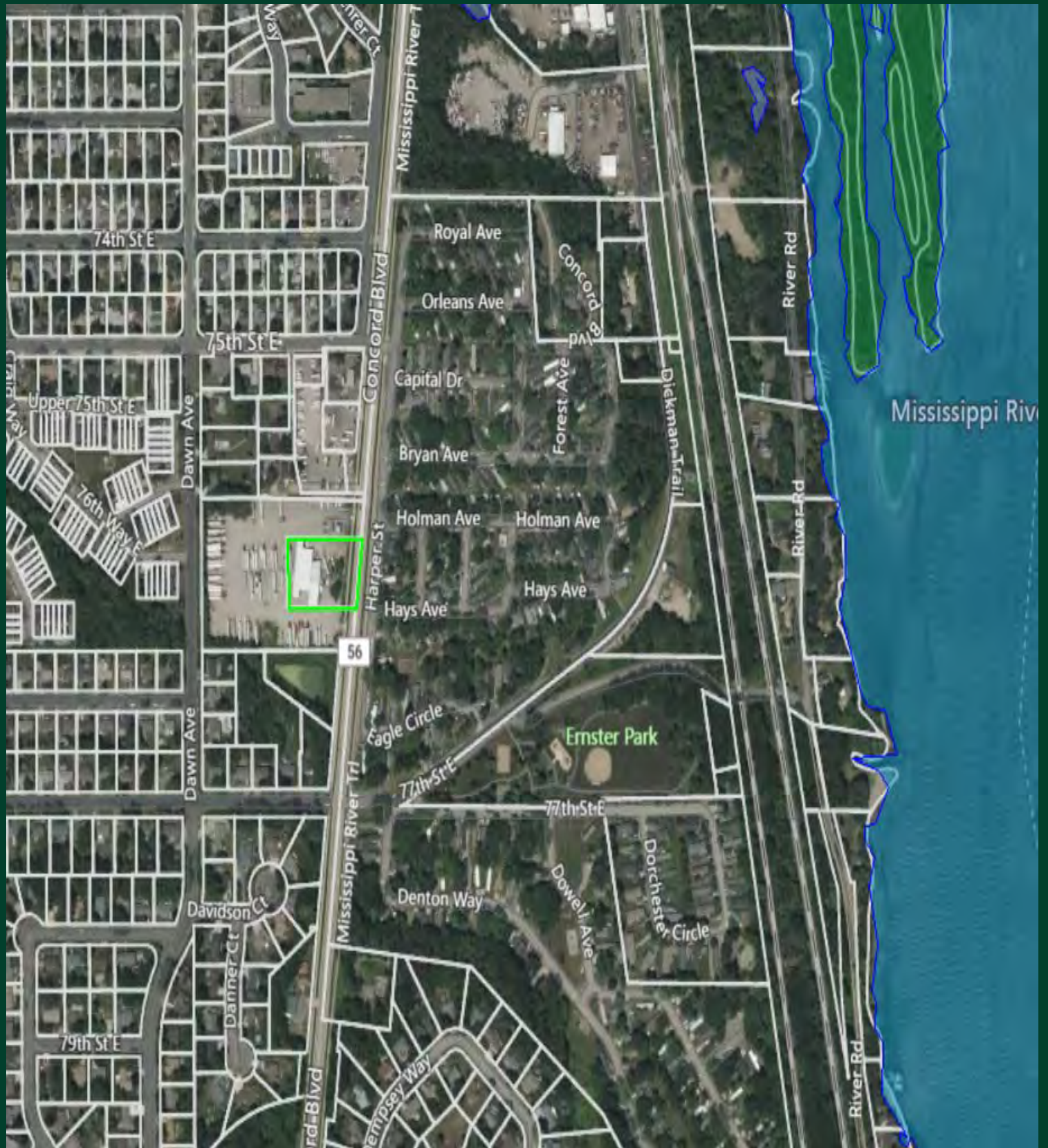


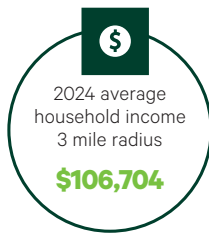
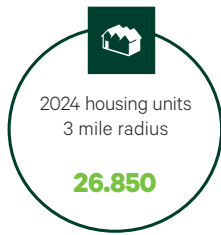
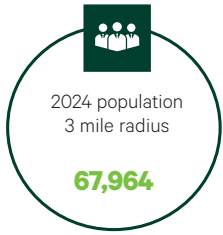
Zoning Map



GB - General Business

Wetlands Map





POPULATION 1 MILE 3 MILES 5 MILES

2024 Population - Current Year Estimate	6,112	67,964	235,960
2029 Population - Five Year Projection	6,191	69,119	238,288
2020 Population - Census	5,921	67,134	235,342
2010 Population - Census	4,972	61,357	215,911
2020-2024 Annual Population Growth Rate	0.75%	0.29%	0.06%
2024-2029 Annual Population Growth Rate	0.26%	0.34%	0.20%

HOUSEHOLDS

2024 Households - Current Year Estimate	2,503	26,850	87,074
2029 Households - Five Year Projection	2,499	27,016	86,966
2010 Households - Census	1,959	25,146	82,768
2020 Households - Census	2,443 96.3%	26,782 96.3%	87,956 96.2%
2020-2024 Compound Annual Household Growth Rate	0.57%	0.06%	-0.24%
2024-2029 Annual Household Growth Rate	-0.03%	0.12%	-0.02%
2024 Average Household Size	2.43	2.50	2.68

HOUSEHOLD INCOME

2024 Average Household Income	\$104,523	\$106,704	\$107,085
2029 Average Household Income	\$121,746	\$124,706	\$124,258
2024 Median Household Income	\$79,890	\$79,806	\$78,248
2029 Median Household Income	\$93,427	\$91,395	\$89,425
2024 Per Capita Income	\$42,629	\$41,926	\$39,555
2029 Per Capita Income	\$48,899	\$48,414	\$45,398

HOUSING UNITS

2024 Housing Units	2,609	27,986	90,826
2024 Vacant Housing Units	106 4.1%	1,136 4.1%	3,752 4.1%
2024 Occupied Housing Units	2,503 95.9%	26,850 95.9%	87,074 95.9%
2024 Owner Occupied Housing Units	1,430 54.8%	17,554 62.7%	55,315 60.9%
2024 Renter Occupied Housing Units	1,073 41.1%	9,296 33.2%	31,759 35.0%

EDUCATION

2024 Population 25 and Over	4,273	47,667	158,009
HS and Associates Degrees	2,121 49.6%	26,904 56.4%	85,185 53.9%
Bachelor's Degree or Higher	1,831 42.9%	17,517 36.7%	57,750 36.5%

PLACE OF WORK

2024 Businesses	284	2,560	6,259
2024 Employees	7,392	47,242	96,321



Contact Us

Myles Harnden

Vice President
952 924 4632
myles.harnden@cbre.com

Hunter Weir

Associate Broker
952 924 4638
hunter.weir@cbre.com

© 2024 CBRE, Inc. All rights reserved. This information has been obtained from sources believed reliable, but has not been verified for accuracy or completeness. You should conduct a careful, independent investigation of the property and verify all information. Any reliance on this information is solely at your own risk. CBRE and the CBRE logo are service marks of CBRE, Inc. All other marks displayed on this document are the property of their respective owners, and the use of such logos does not imply any affiliation with or endorsement of CBRE. Photos herein are the property of their respective owners. Use of these images without the express written consent of the owner is prohibited.