

Premier Medical & Office Space Available with Lakeside Views

550 Kinderkamack Road, Oradell, NJ



Space/Property Highlights:

- +/- 8,200 SF (divisible) 2nd Floor
Newly Renovated Medical/Office Space Available Consisting of Existing Exam Rooms with Sinks, Private Restrooms and Ample Open Workspace. Great for any medical or professional office uses of all sizes.
- +/- 9,200 SF (divisible) Ground Floor
Medical/Office Space Available Former MRI Space and well suited for an array of medical uses such as PT, Strength Conditioning & Fitness Uses of all sizes. Build to Suit Opportunities Await.
- Plentiful Parking Available
- Elevator Building
- Boutique Floor Plates allow for generous window lines and natural light throughout
- Serene Environment with Lakeside Views
- On-Site Building Ownership & Management
- Easily Accessible to the Garden State Parkway & NJ Route 17
- Walk to NJ Transit Oradell Train Station

For more information or to view this property, contact 201.416.6112

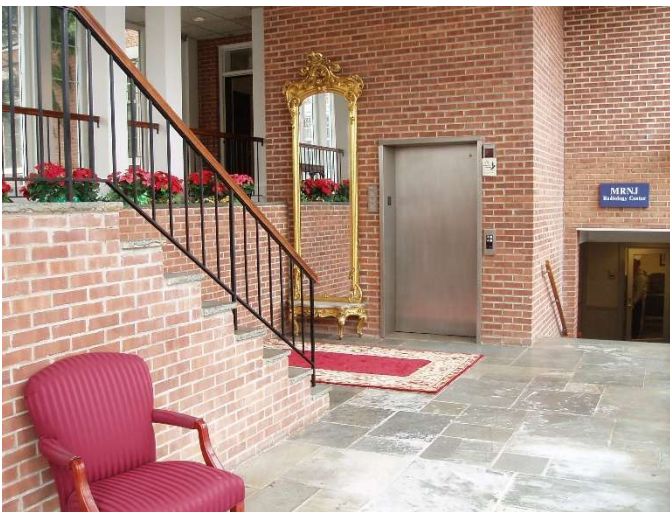
David Richman at x 13 or David@Rakowgroup.com

50 Tice Blvd., Woodcliff Lake, NJ 07677 | RakowGroup.com

No warranty of representation, express or implied, is made as to the accuracy of the information contained herein, and same is submitted subject to errors, omissions, change of price, rental or other conditions, withdrawal without notice, and to any specific listing conditions, imposed by our principals.

RAKOW

COMMERCIAL REALTY GROUP



For more information or to view this property, contact 201.416.6112

David Richman at x 13 or David@Rakowgroup.com

50 Tice Blvd., Woodcliff Lake, NJ 07677 | RakowGroup.com

No warranty of representation, express or implied, is made as to the accuracy of the information contained herein, and same is submitted subject to errors, omissions, change of price, rental or other conditions, withdrawal without notice, and to any specific listing conditions, imposed by our principals.