

Business Real Estate

Providing Workplace Solutions

Business Real Estate, Inc.
Licensed Real Estate Brokers
825 US Highway One, Suite 340
Jupiter, FL 33477
Phone 561-624-1420
Fax 561-743-1103



CLASS A FLEX CONDO FOR LEASE

952 Jupiter Park Lane, Unit 4, Jupiter, FL 33458

Size: 3,680 sq ft:

Year built: 2013

BASE RENT: \$19.00 PSF CAM: \$8.29 PSF

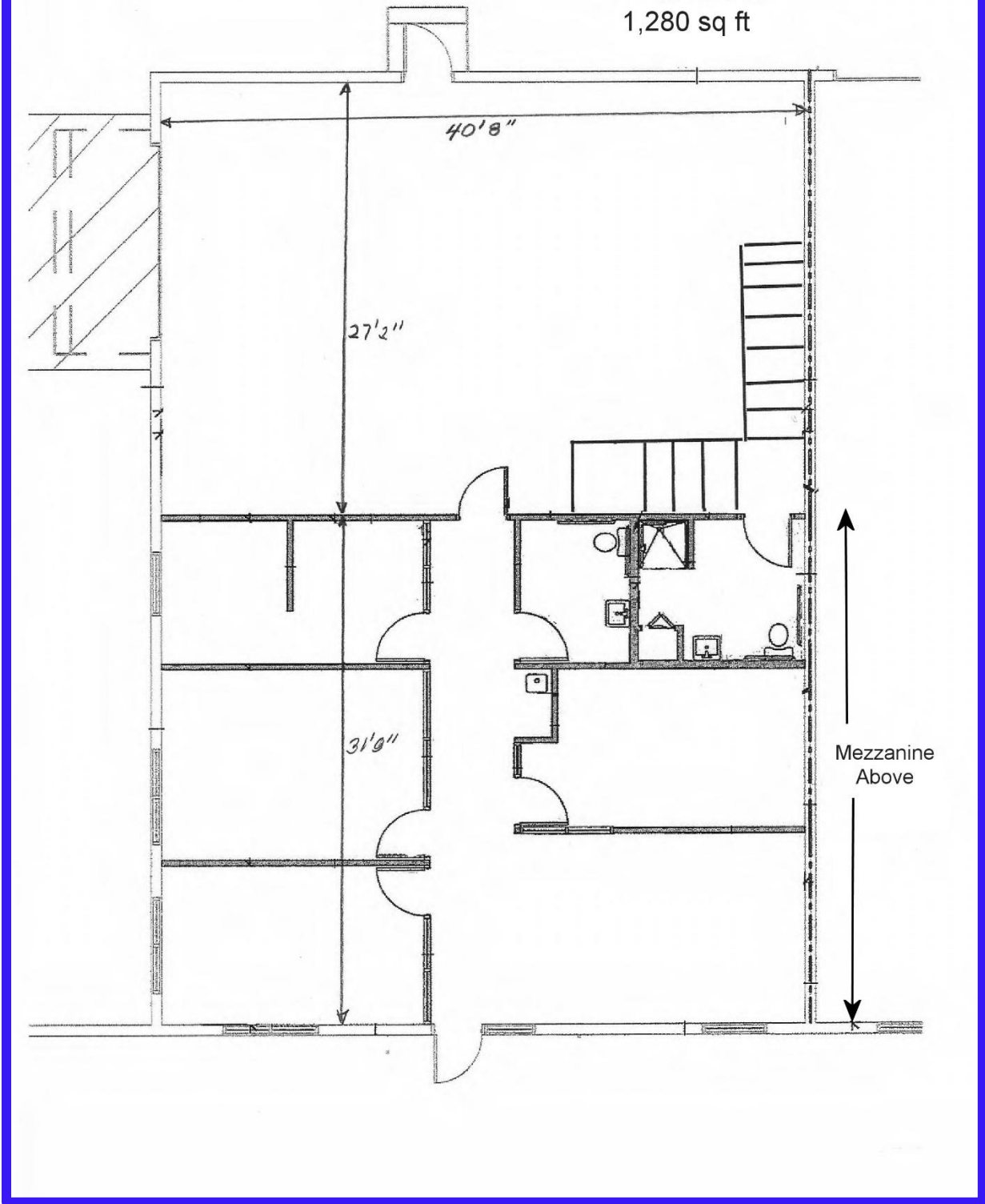
Class A flex space with 1,288 sq ft of ground floor office, 1,104 sq ft of ground floor warehouse and 1,288 sq ft of second floor mezzanine. The office has reception, four office, restroom and coffee bar. Warehouse has separate restroom with shower, 12x14 rollup door and a separate man door. Second floor mezzanine area is wide open with removable rails for forklift access. 250 Amp, 3 Phase power.

The property is centrally located within the Jupiter Park of Commerce with convenient access to I-95 and the Florida Turnpike.

For Additional Information
Jack Robson 561 371-6514

This information has been secured from sources we believe to be reliable, but we make no representation or warranties, expressed or implied, as to the accuracy of the information. Interested parties should conduct their own independent investigations and rely only on those results.

952 Jupiter Park Lane
Unit 4
1,280 sq ft



This information has been secured from sources we believe to be reliable, but we make no representation or warranties, expressed or implied, as to the accuracy of the information. Interested parties should conduct their own independent investigations and rely only on those results.



This information has been secured from sources we believe to be reliable, but we make no representation or warranties, expressed or implied, as to the accuracy of the information. Interested parties should conduct their own independent investigations and rely only on those results.



This information has been secured from sources we believe to be reliable, but we make no representation or warranties, expressed or implied, as to the accuracy of the information. Interested parties should conduct their own independent investigations and rely only on those results.