

**Sarah Dominguez**  
President  
915 433 0800  
sarah@grayce.us

**Taylor Dominguez**  
Commercial Agent  
915 373 8617  
taylor@grayce.us

**Charlee Gutierrez**  
Commercial Agent  
915 316 1682  
charlee@grayce.us

# Property For Lease

4532 N MESA ST  
EL PASO, TX 79912

UP TO 3,901 SF COMBINED  
AVAILABLE





# About This Property

## Property Details

This Class A medical office building totals 39,072 SF and is situated in a high-traffic corridor, just two miles from The Hospitals of Providence Memorial Campus (Tenet) and 2.5 miles from Las Palmas Medical Center (HCA). It is surrounded by a diverse mix of medical tenants, including cardiology, pediatrics, bariatrics, primary care, rheumatology, pulmonology, urogynecology, and a surgery center. Additionally, lease agreements offer valuable signage opportunities.



4532 N MESA STREET - EL PASO, TX - 79912



# Property Details

UP TO 3,901 SF COMBINED AVAILABLE FOR LEASE

Building Size	39,072 SF
SF Available	Up to 3,901 Combined Available
# of Stories	2
Building Class	A
Type of Business	Medical Office Building
Lease Rate	Call for rates
Lease Type	NNN
Zoning	C-3



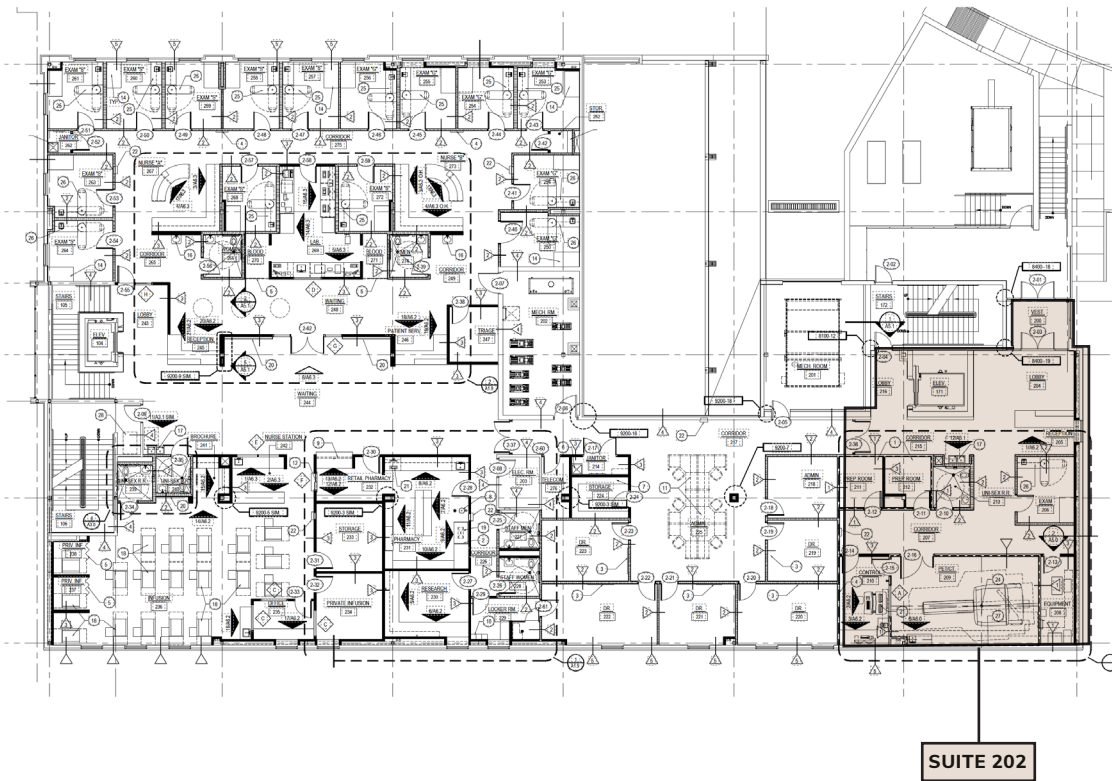
# Site Aerial





# Space Layout

## 2<sup>ND</sup> FLOOR



## AVAILABLE SPACES

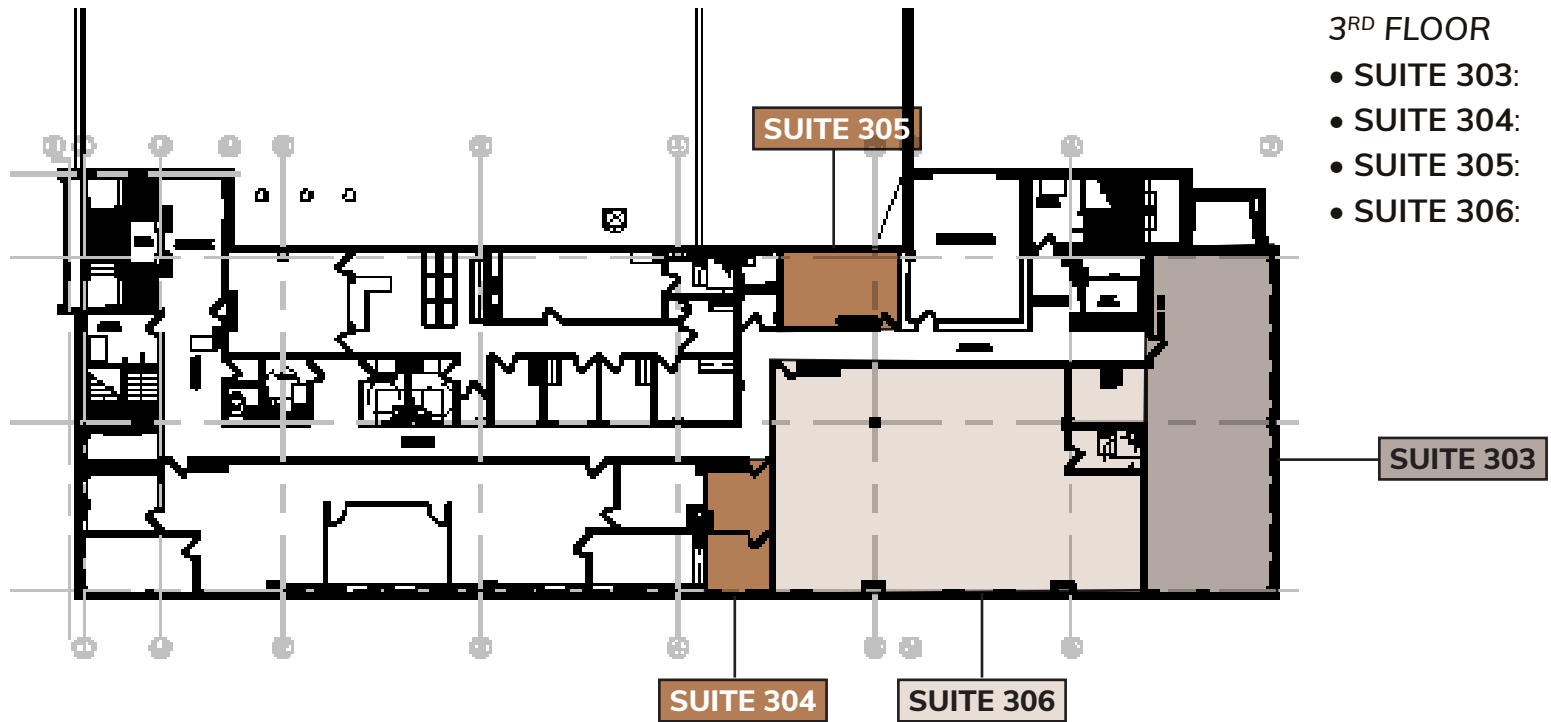
### 2<sup>ND</sup> FLOOR

- Suite 202: 2,152 SF



# Space Layout

## 3<sup>RD</sup> FLOOR



## AVAILABLE SPACES

### 3<sup>RD</sup> FLOOR

- SUITE 303: 1,374 SF
- SUITE 304: 252 SF
- SUITE 305: 274 SF
- SUITE 306: 2,275 SF

1600 MEDICAL CENTER STREET - EL PASO, TX - 79902



# Property Photos

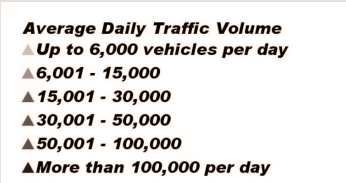
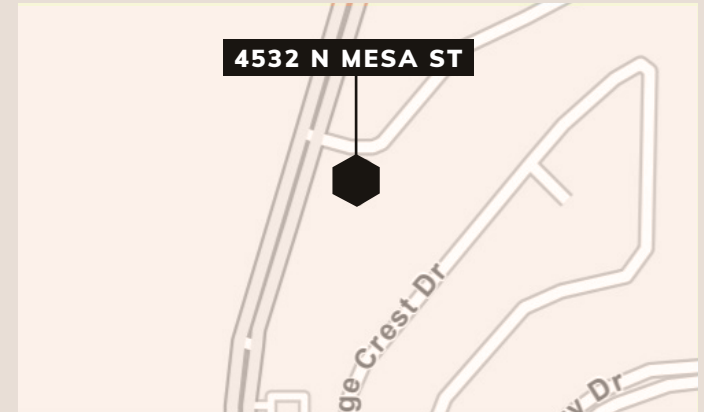
EXTERIOR PHOTOS





# Traffic Volume

IMMEDIATE AREA





# Demographics

## 1,3,5 Mile Radius, 2024 & 2029

4532 N MESA STREET - EL PASO, TX - 79912



### Population

1 mile	8,729	8,935
3 miles	59,224	59,417
5 miles	161,843	162,265



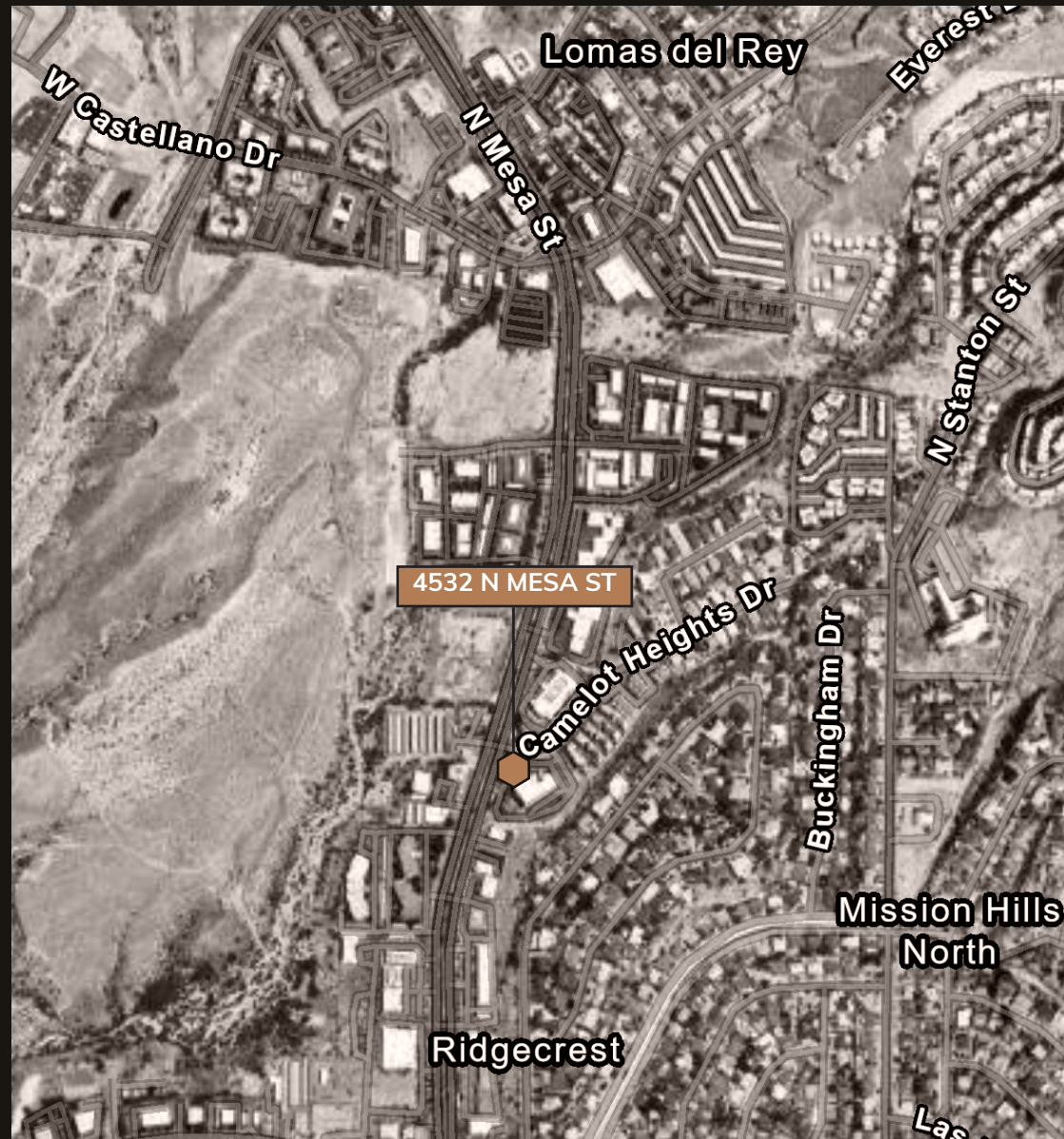
### Households

1 mile	4,575	4,858
3 miles	26,585	27,677
5 miles	65,697	68,203



### Median HH Income

1 mile	\$52,019	\$57,999
3 miles	\$50,584	\$50,584
5 miles	\$48,270	\$54,247



**Sarah Dominguez**  
President  
915 433 0800  
sarah@grayce.us

**Taylor Dominguez**  
Commercial Agent  
915 373 8617  
taylor@grayce.us

**Charlee Gutierrez**  
Commercial Agent  
915 316 1682  
charlee@grayce.us

# Property For Lease

4532 N MESA ST  
EL PASO, TX 79912

UP TO 3,901 SF COMBINED  
AVAILABLE

