

Free-Standing Corner Retail

1,637 SF Available For Sale

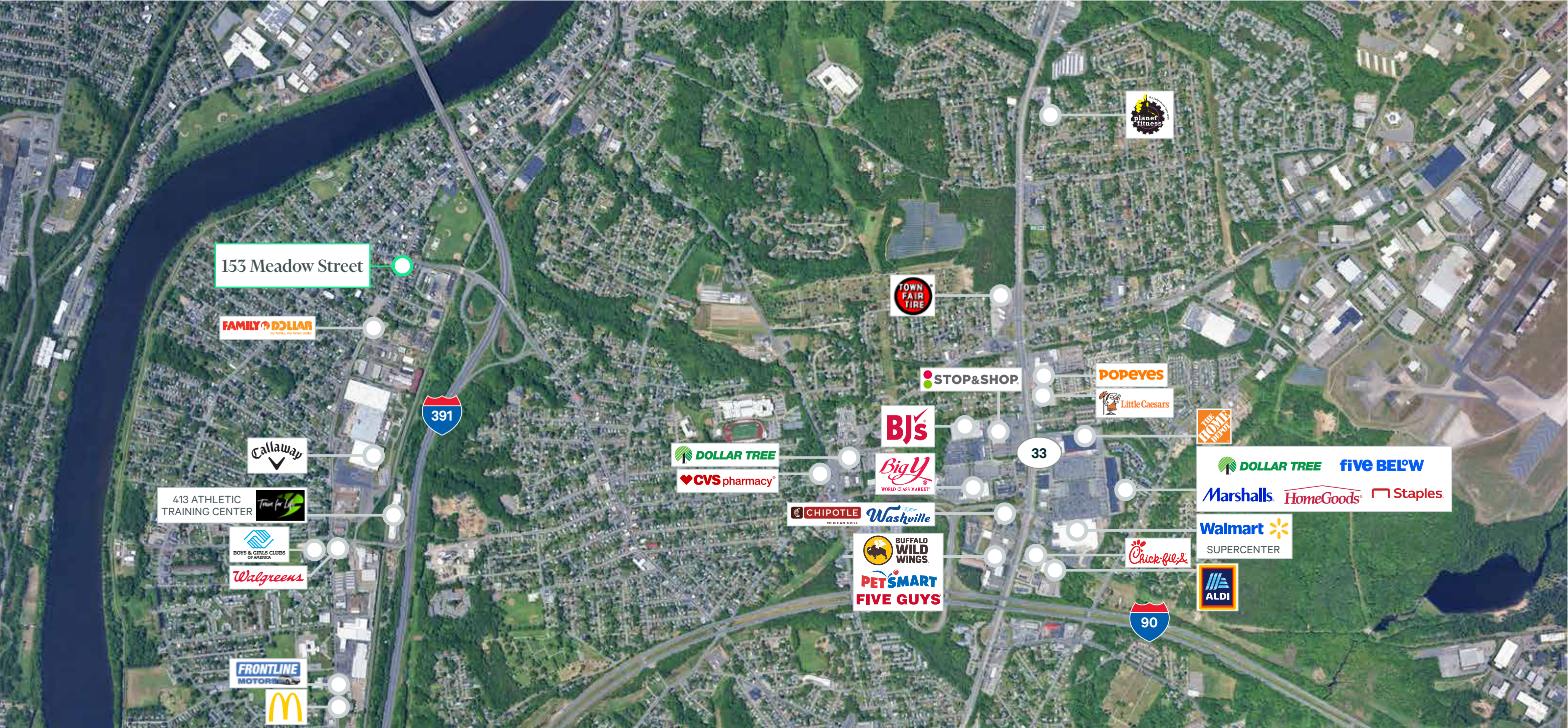
153 Meadow Street
Chicopee, Massachusetts
[CLICK HERE FOR TEMPLATED LOI](#)



Features

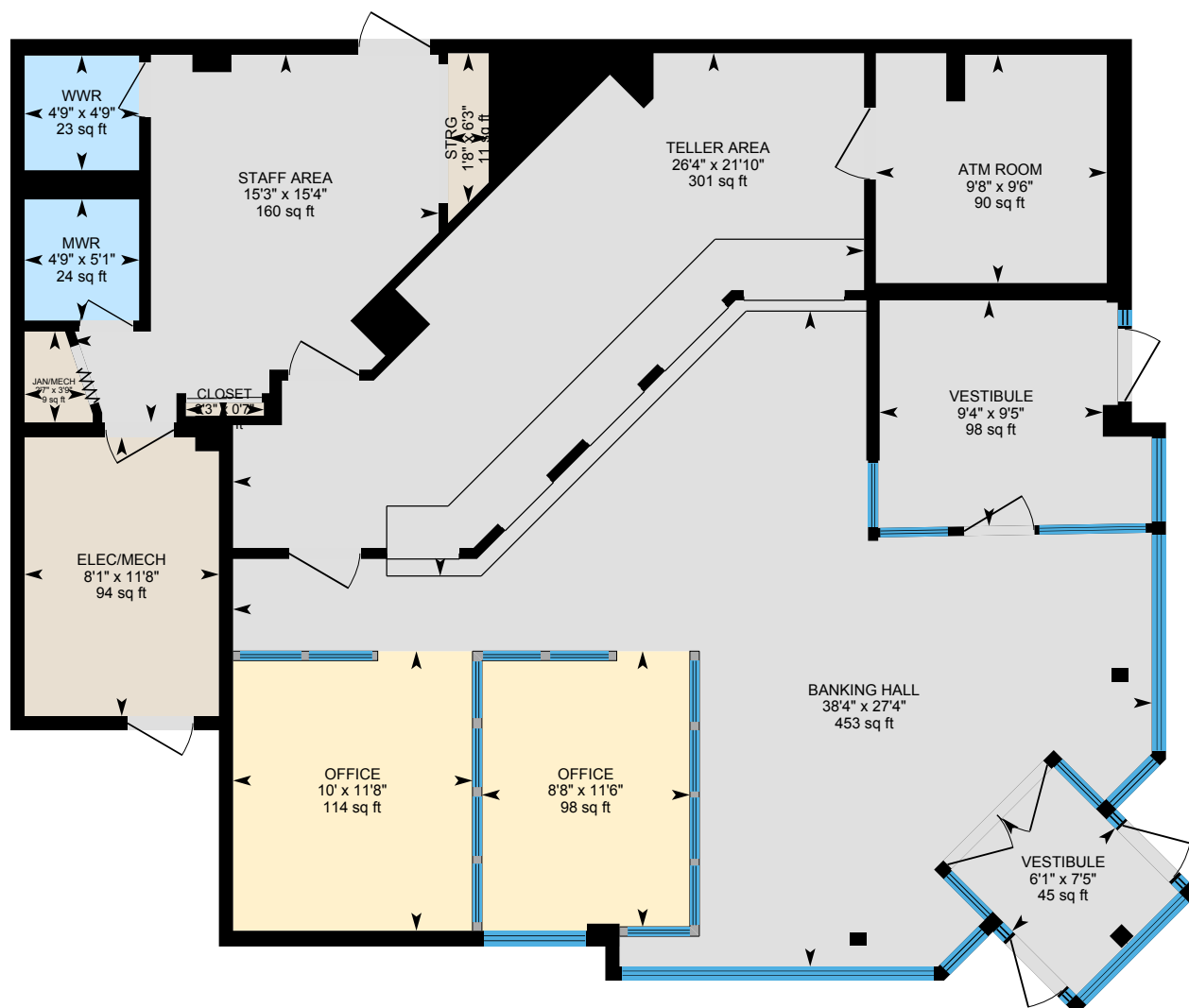
- + Free-standing former bank on .38 acres at the corner of a signalized intersection
- + The site is located seconds off of Interstate 391 and is an exit away from Interstate 90
- + Nearby amenities include residential density, industrial/flex users as well as local restaurants and services
- + The property has ample parking with 26 spaces to accommodate various users including offices, fitness and food and beverage
- + This is an operating business. Please do not contact or visit the branch, or otherwise disturb the employees. Please direct all inquiries and site visit requests to the listing broker.

Retail Market



2024 Demographics	1 Mile	3 Miles	5 Miles	7 Miles
Estimated Population	12,519	85,667	155,807	293,306
Estimated Households	5,175	37,720	65,958	120,333
Estimated Average Household Income	\$71,170	\$76,567	\$83,473	\$81,401
Estimated Daytime Population	10,467	86,333	172,867	324,156

Floor Plan



Contact Us

Josh Kulak

Senior Associate
+1 617 912 6835
josh.kulak@cbre.com

Katrina Giotsas

Associate
+1 857 328 4173
katrina.giotsas@cbre.com

© 2025 CBRE, Inc. All rights reserved. This information has been obtained from sources believed reliable, but has not been verified for accuracy or completeness. You should conduct a careful, independent investigation of the property and verify all information. Any reliance on this information is solely at your own risk. CBRE and the CBRE logo are service marks of CBRE, Inc. All other marks displayed on this document are the property of their respective owners, and the use of such logos does not imply any affiliation with or endorsement of CBRE. Photos herein are the property of their respective owners. Use of these images without the express written consent of the owner is prohibited.