

188 MONTAGUE STREET, BROOKLYN, NEW YORK



ENTIRE 6th&7th FLOORS AVAILABLE:9,024rsf(4,512RSF PER FLOOR)

Accessible by public transportation including all major subway lines including the 2, 3, 4, 5, N, R, A, C & F as well as the B38,B41, B52, B103 bus lines

- Only two subway stops into Lower Manhattan
- Walking distance to all Federal, State and local Courts as well as Brooklyn's historic Brooklyn Borough Hall
- Walking distance to all restaurants and shopping
- 24/7 building access, 365 days of the year
- **Landlord will build to suit/ Will Divide Floors**

Contact Us

For Leasing Information Contact: Kraig Silver, Executive Vice President **Phone** | 516.837.8070 **Email** | kraig.silver@treelinecompanies.com

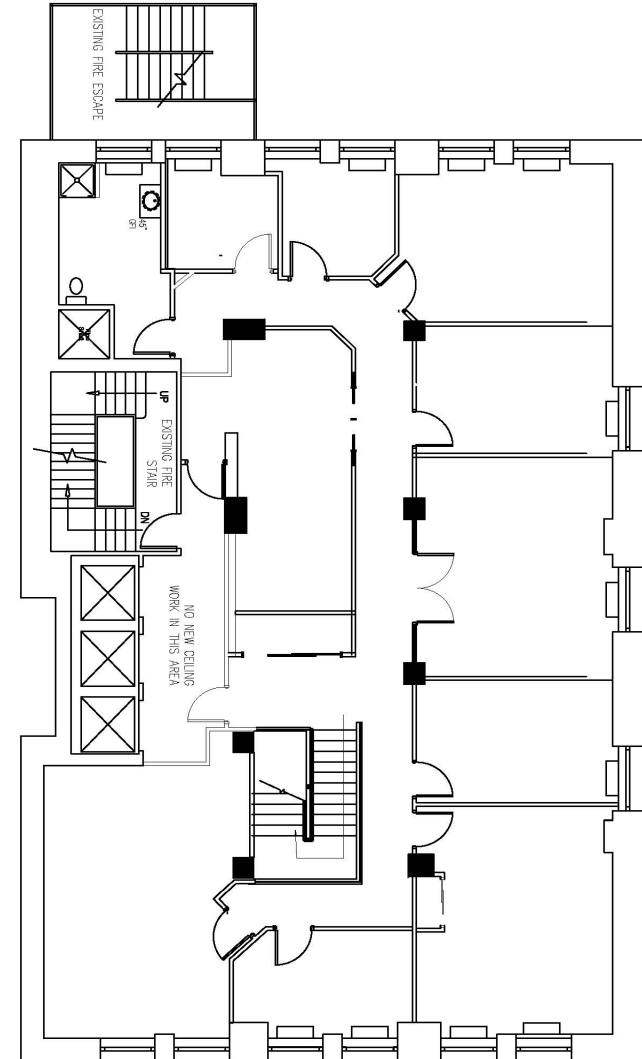
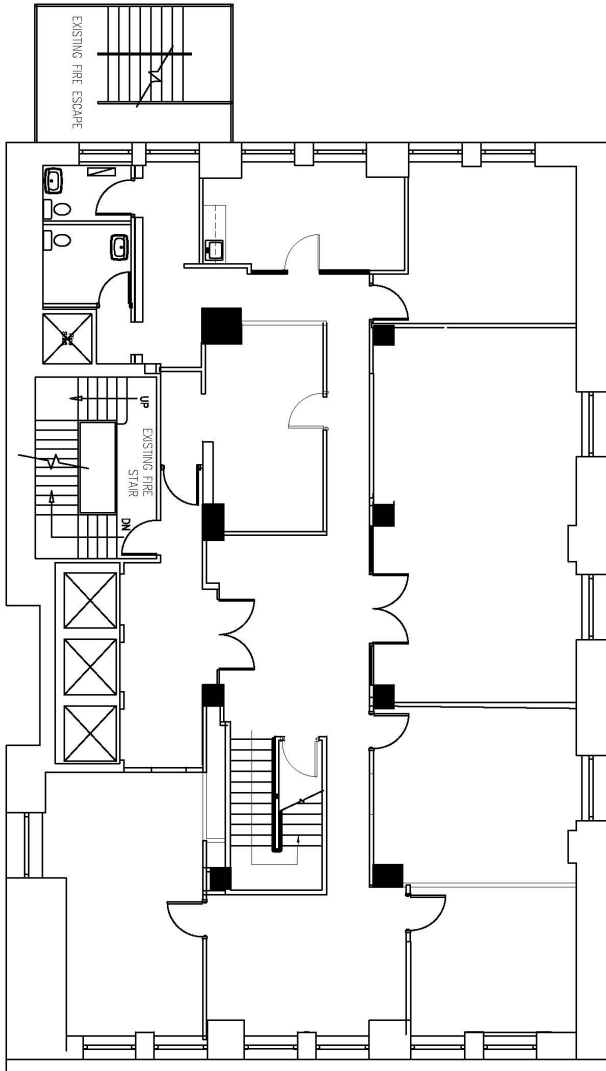


Brokers Protected. All information contained herein regardless of source is deemed reliable, but no warranty or representation is made as to the accuracy thereof and should be verified by personal inspection by and/or with the appropriate professional(s). All information contained herein is subject to correction of errors, omissions or withdrawal from market without notice.

6th Floor

EXISTING CONDITIONS PLANS

7th Floor



Contact Us

For Leasing Information Contact: Kraig Silver, Executive Vice President
Phone | 516.837.8070 Email | kraig.silver@treelinecompanies.com



TREELINE