

5.74 Acres of Land Available For Sale

511 MARTIN LUTHER KING NW, WINTER HAVEN, FL 33881



5 AC Pad Site Available For Sale

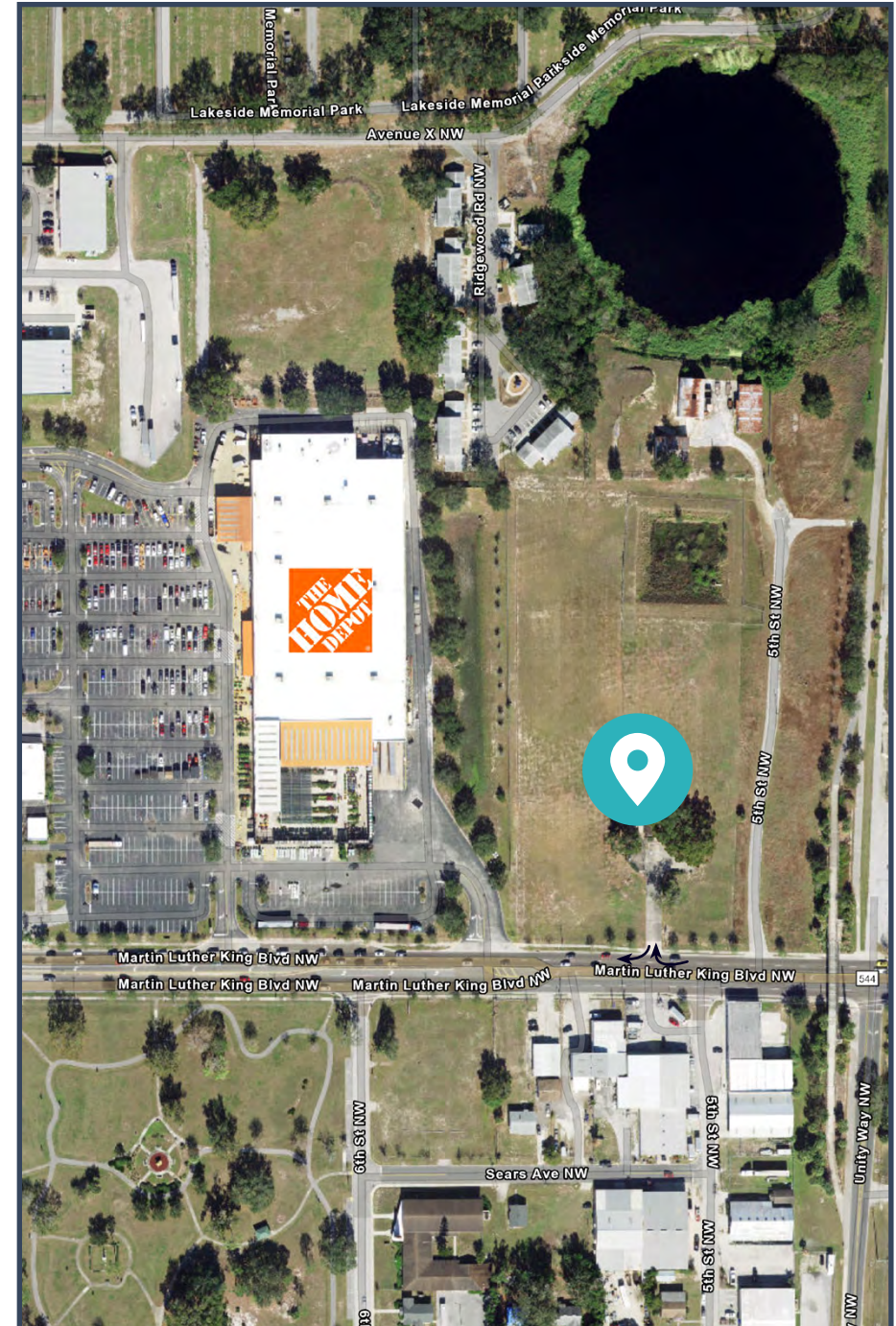
511 MLK Blvd NW, Winter Haven, FL 33881

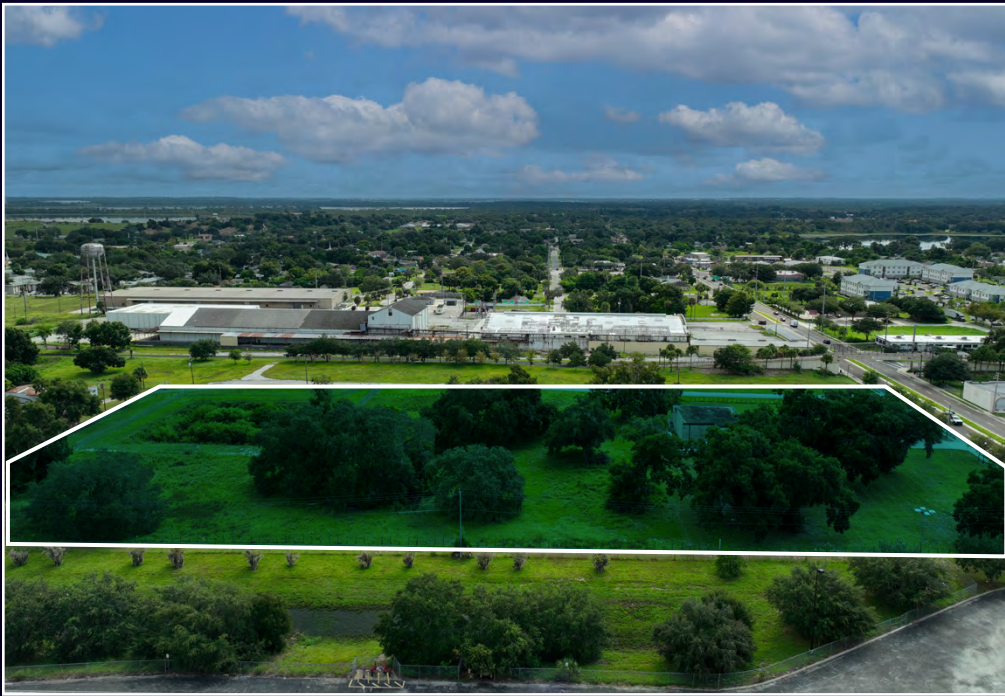
SIZE:	250,000 SF / 5.74 Acres
ZONING:	I-1 (Light Industrial/Office/Warehouse)
AADT:	30,000 VPD - MLK Blvd NW
PRICING:	Upon request
AVAILABILITY:	Immediate
HIGHLIGHTS:	<ul style="list-style-type: none"> • Located between Lakeland and Kissimmee with direct access to one of the city's main thoroughfares • Adjacent to Home Depot and nearby other national retailers • Permitted uses include: <ul style="list-style-type: none"> • Industrial Outdoor Storage (IOS) • Parking & vehicle storage • Equipment storage/sales • Hotel • Office • Retail • Auto Repair/Sales • Educational facility • Storage

DEMOGRAPHICS

(1, 3, 5 MILES)

Population	Daytime Population	Avg HH Income
6,855	16,857	\$64,913
48,693	79,487	\$71,567
101,314	171,718	\$78,759







1.1 Acres of Land For Sale in Miami

16001 SW 142nd Avenue
Miami, FL 33177



FOR INQUIRIES, CONTACT:

Andrew Rosenberg
(305) 897-0939
andrew@upsidecre.com