

4,000SF OFFICE/WAREHOUSE SPACES FOR LEASE  
1523 – 1531 CENTRAL PARK DRIVE HURST, TX 76053



### **Key Features**

- 4,000SF Spaces (approx. 1/3 office, 2/3 warehouse)
- ~8 Parking Spaces Per Suite
- Brand new, fully built-out interior with new HVAC systems
- LED lighting throughout with motion sensing switches in offices
- 11ft 9in Warehouse Clearance Height
- One 10x10ft Grade Level Door per Suite
- Close proximity to I-820 and HWY 10

### **Leasing Information**

- Lease Rate: Upon Request
- Lease Type: Gross Modified (Tenant responsible for base rent + electric)
- Lease Term: Negotiable

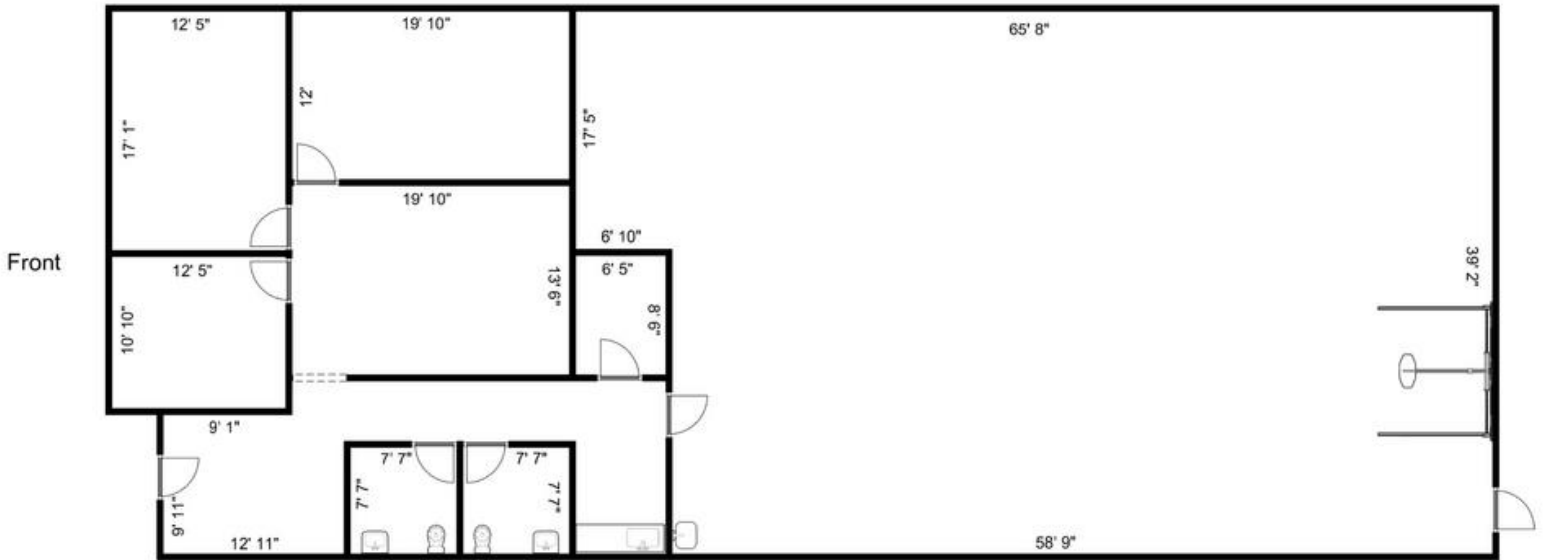


Contact for further information

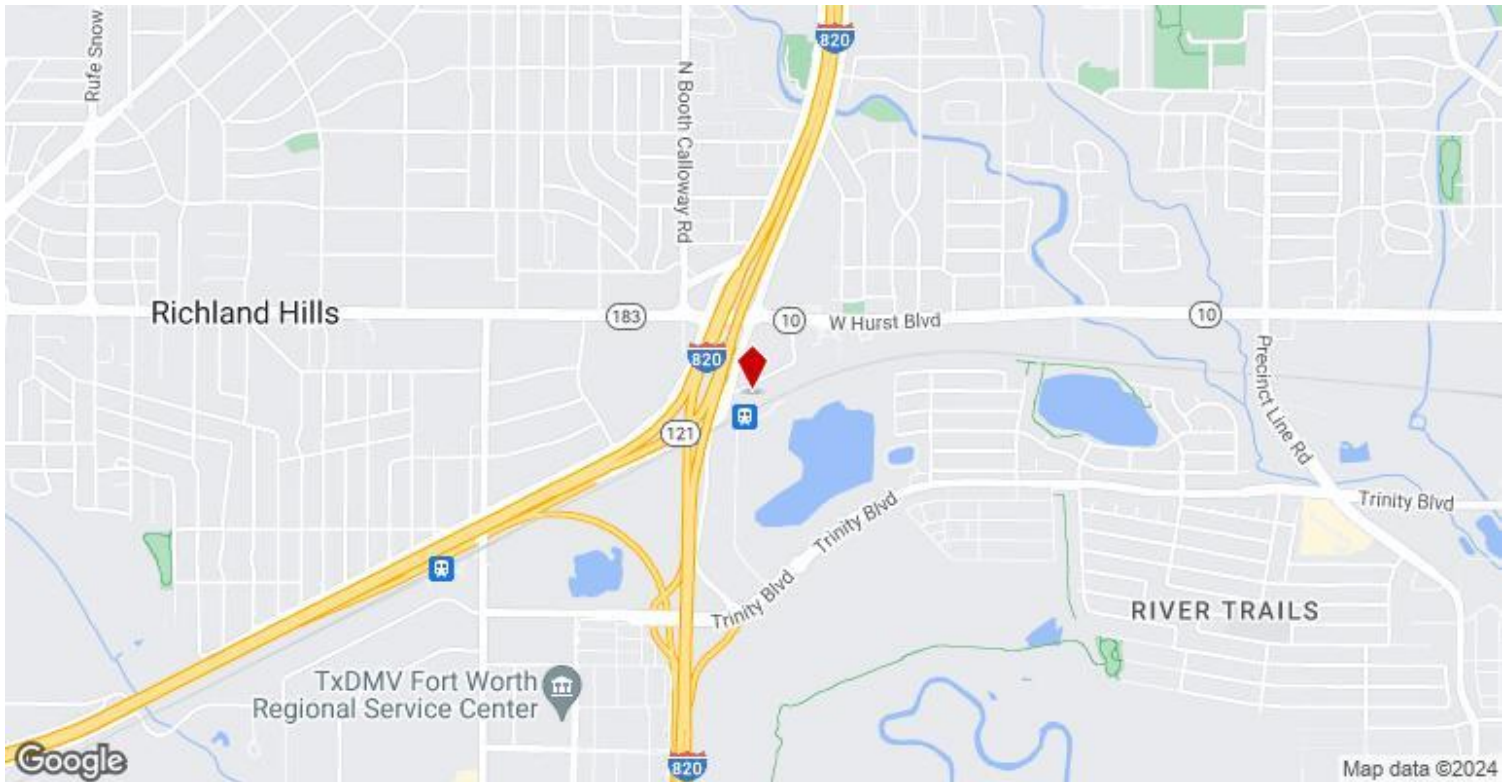
Phone: 972-248-1091

Email: [team@duttonsicklerproperties.com](mailto:team@duttonsicklerproperties.com)

# FLOORPLAN AND LOCATION MAP



1523 Central Park Drive Hurst, TX 76053





# INTERIOR PHOTOS

