



607 10TH STREET
Golden, Colorado 80401



PROPERTY FEATURES

- Conveniently located in the heart of Downtown Golden, one block from Washington Street
- Professional property management
- Close to restaurants, banks and retail
- Clear Creek and Parfet Park nearby

PROPERTY SPECIFICATIONS

AVAILABLE:

Suite 108	344 RSF
Suite 301	409 RSF
Suite 305	522 RSF
Suite 202	592 RSF
Suite 105	688 RSF
Suite 107	688 RSF
Suite 203	688 RSF
Suite 204	688 RSF
Suite 109	722 RSF
Suite 307	1,660 RSF
Suite 207	2,805 RSF

Lease Rate:	\$24.00/RSF FSG
Year Built:	1974
Elevator:	Yes
Building Area:	18,851 SF



FOR MORE INFORMATION CONTACT:

RENÉE SPICER

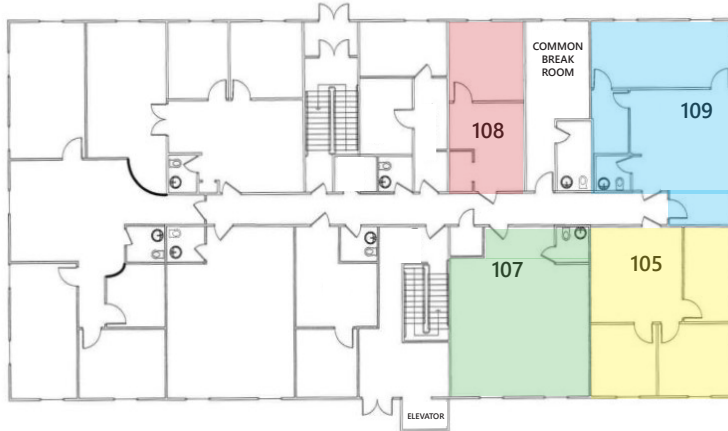
rspicer@gcgcre.com | 720.476.5226

JAMIE MACBETH

jmacbeth@gcgcre.com | 720.476.5229

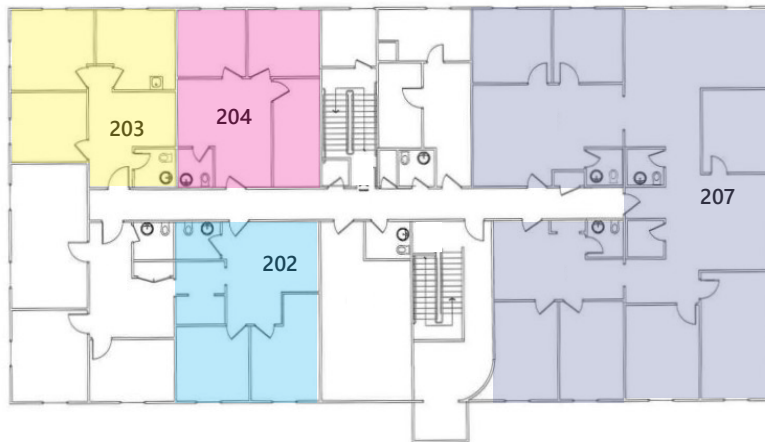
FIRST FLOOR

Suite 108	344 RSF
Suite 105	688 RSF
Suite 107	688 RSF
Suite 109	722 RSF



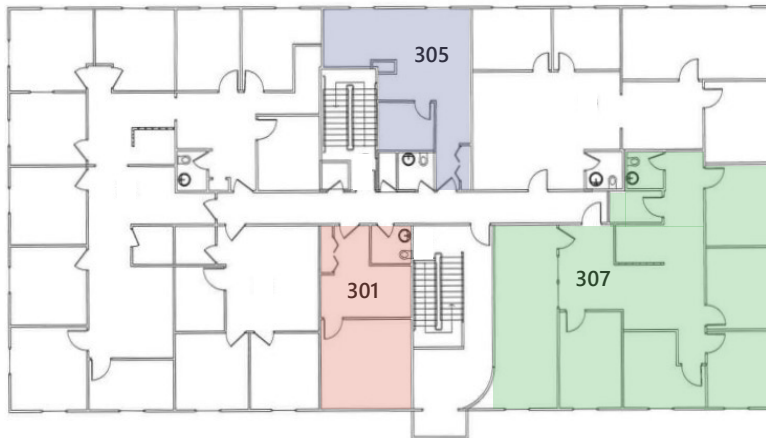
SECOND FLOOR

Suite 202	592 RSF
Suite 203	688 RSF
Suite 204	688 RSF
Suite 207	2,805 RSF



THIRD FLOOR

Suite 301	409 RSF
Suite 305	522 RSF
Suite 307	1,660 RSF



FOR MORE INFORMATION CONTACT:

RENÉE SPICER

rspicer@gcgcre.com | 720.476.5226

JAMIE MACBETH

jmacbeth@gcgcre.com | 720.476.5229

GENESEE COMMERCIAL GROUP, LLC | 710 KIPLING STREET, SUITE 403 | LAKEWOOD, COLORADO 80215 | WWW.GCGCRE.COM