



New England  
Retail Properties, Inc.

# NEW DEVELOPMENT COMING SOON



**KERRY WOOD**

D: 860.529.9000 X 102

[kwood@newenglandretail.com](mailto:kwood@newenglandretail.com)

[www.newenglandretail.com](http://www.newenglandretail.com)

*The Highrailer*

283 Main Street, New Britain, CT 06051



# THE HIGHRAILER



## PROPERTY DETAILS | Now Leasing

<b>AVAILABLE</b>	Up to 6,000 SF
<b>RENTAL RATES</b>	\$25 SF + \$5 SF in taxes, insurance, and CAM
<b>SPACE TYPE</b>	Retail / Medical / Restaurant

The building replaces two century-old buildings that housed the former Amato's Toy & Hobby and Liberty Tax retail spaces at the corner of Main St. and Columbus Blvd. They are conveniently located adjacent to the downtown New Britain CT Fastrak station and only a minute drive from Routes 9 & 72.

'The Highrailer' at 283 Main Street will rise above Central Park alongside it's sibling 'The Brit' which broke ground in the autumn of 2021. The Highrailer will feature 114 market-rate studio and 2-bedroom apartment units as well as a total of 6,000 square feet of prime ground-floor retail, and high visibility, corner restaurant space. The restaurant and retail spaces are presently available. Both projects are expected to be complete in the 2023 calendar year.



**HIGHWAY ACCESS**  
Approximately 0.1 miles,  
1 minute to Route 9 & 72



**DEMOGRAPHICS**  
Heavily populated area:  
+161,000 people within 5 miles



**LOCATION**  
Centrally located in downtown  
New Britain, Connecticut



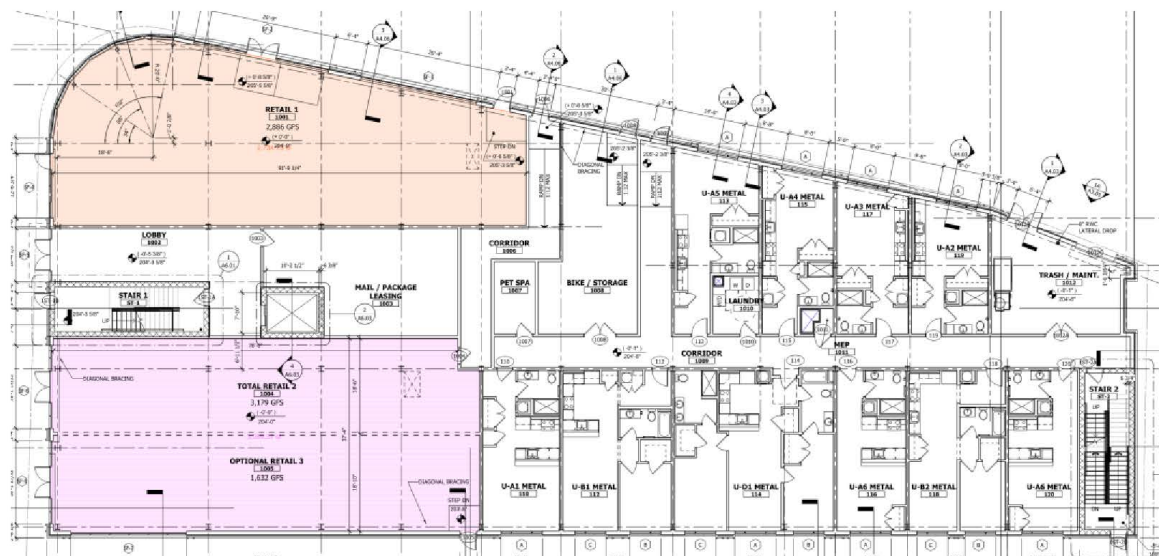
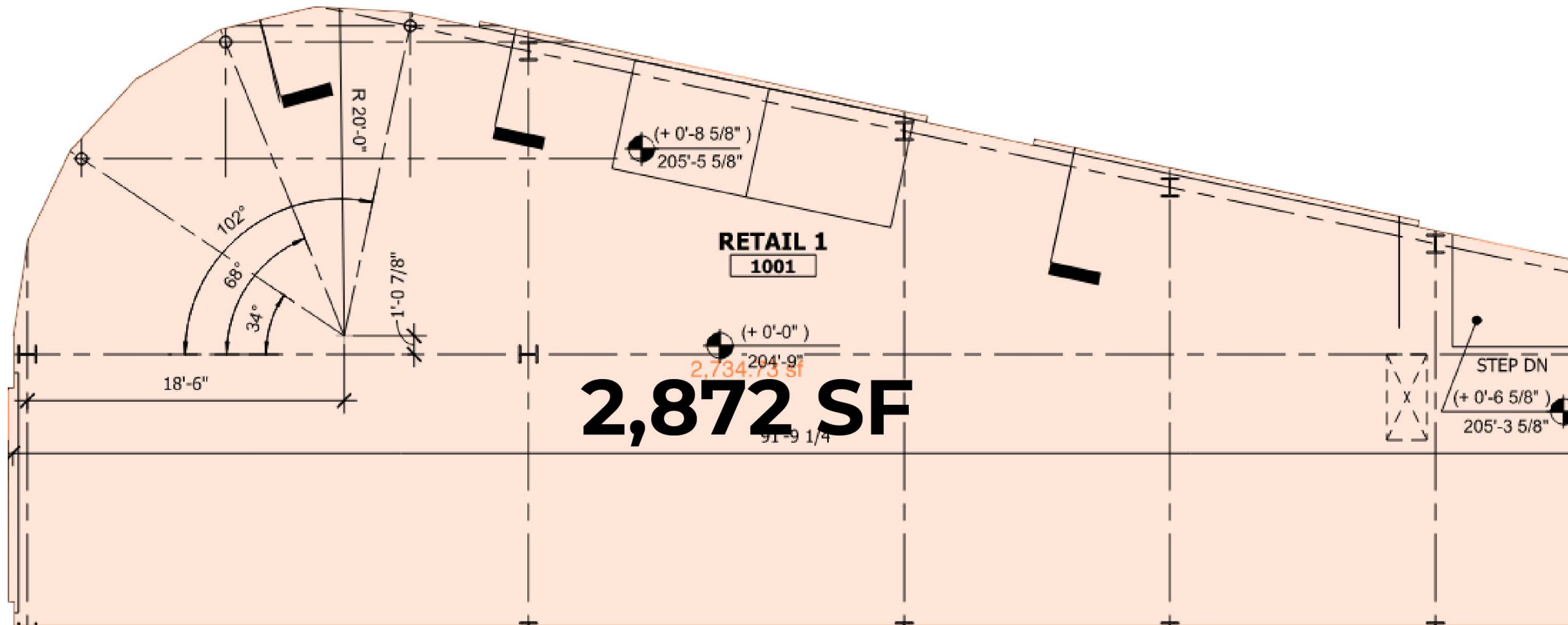
# PROPOSED FLOOR PLAN



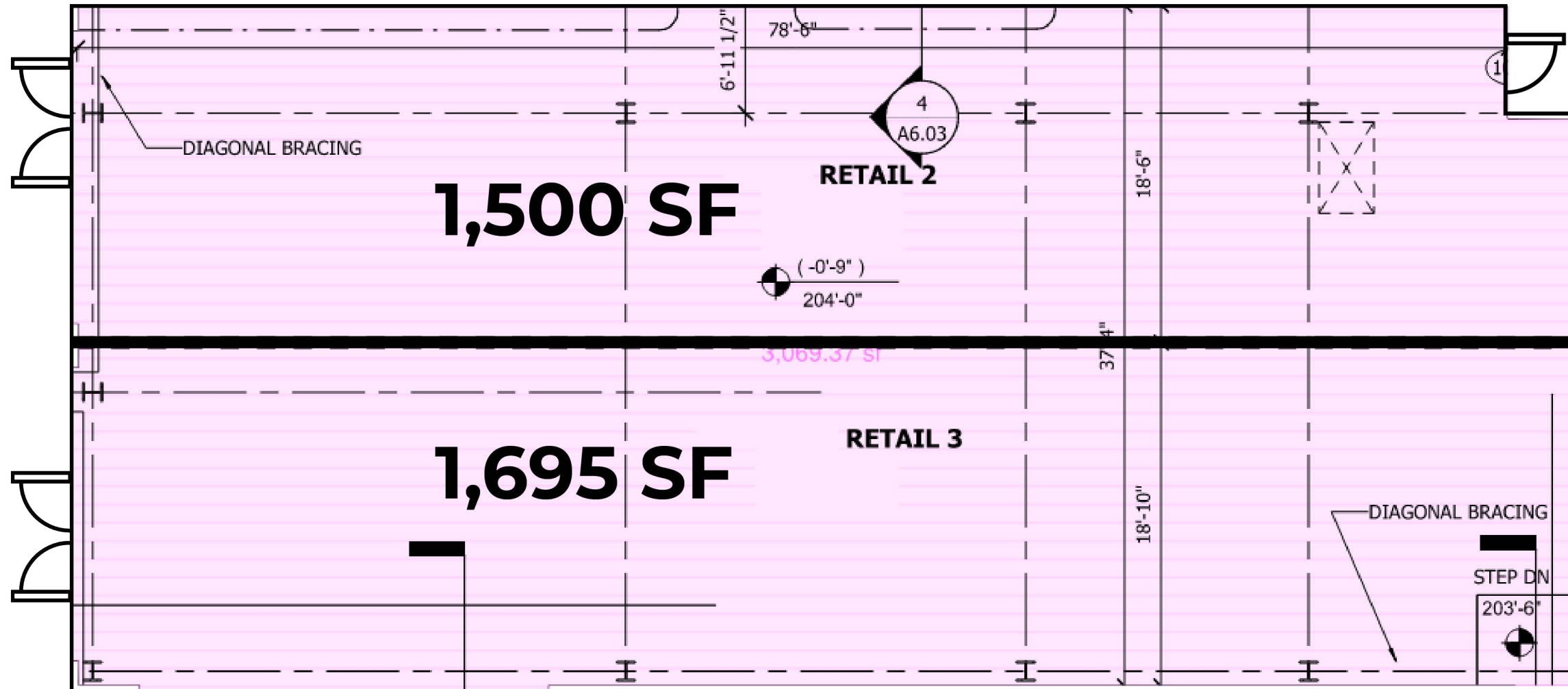
**NOW LEASING**

**RETAIL 1**

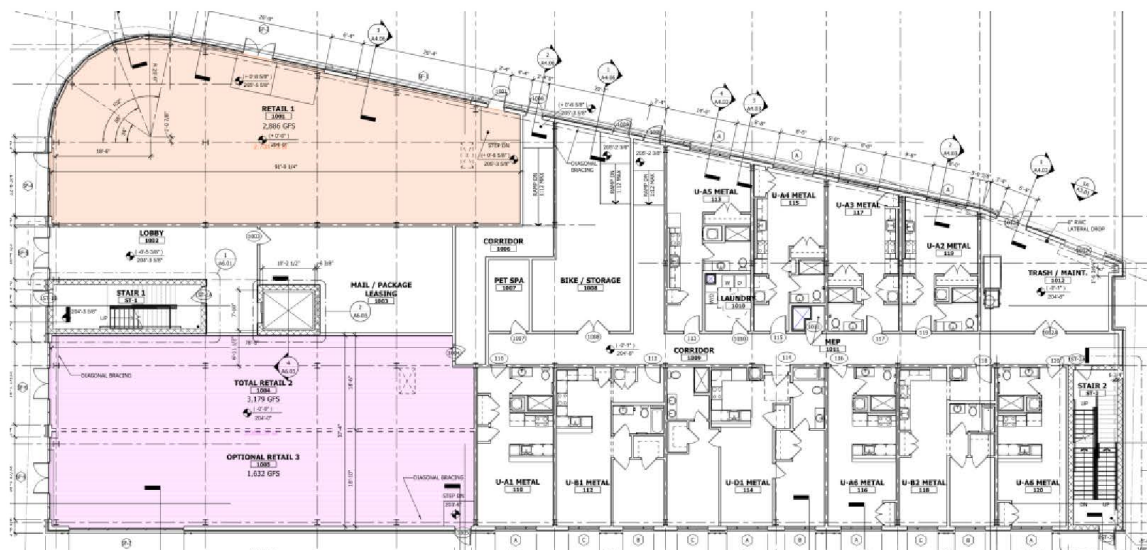
**2,872 SF**



# PROPOSED FLOOR PLAN



NOW LEASING	
RETAIL 2	1,500 SF
RETAIL 3	1,695 SF







Beeline Trailhead



COURTYARD



NEW BRITAIN TOWN & CITY CLERK

New Britain Mayor Office

NEW BRITAIN BOARD OF ED

NEW BRITAIN CITY HALL

NEW BRITAIN INDUSTRIAL MUSEUM

THE Brit

MILEWSKI PARK

New Britain Roundabout

BANK ST

MAIN ST

COLUMBUS BLVD

COLUMBUS BLVD

COLUMBUS BLVD

COLUMBUS BLVD

BANK ST

Scalise Dr

BEACON PRESCRIPTIONS  
The Difference is Caring

Soldiers and Sailors Monument

PUBLIC PARKING

Red Roof

Mofongo

THE ASSEMBLY ROOM

CENTRAL PARK

MAIN ST





**THE HIGHRAILER**

**THE ASSEMBLY ROOM**

**TD Bank**



**The Hospital of Central Connecticut**

**FAMILY DOLLAR** **EbLens**  
**Auto Zone** **Webster**

**Key Food** **McDonald's** **planet fitness** **TOWN FAIR TIRE**  
**Advance Auto Parts** **SALLY BEAUTY**  
**SUBWAY** **DUNKIN'** **Rainbow** **TACO BELL**

**Walgreens**

**Funcity Trampoline Park New Britain CT** **Planet Fitness**

**CTfastrak**

**Price Rite**  
MARKETPLACE

**DOLLAR TREE**

**CVS**

**COLUMBUS COMMONS**

**TOWN TOWN**

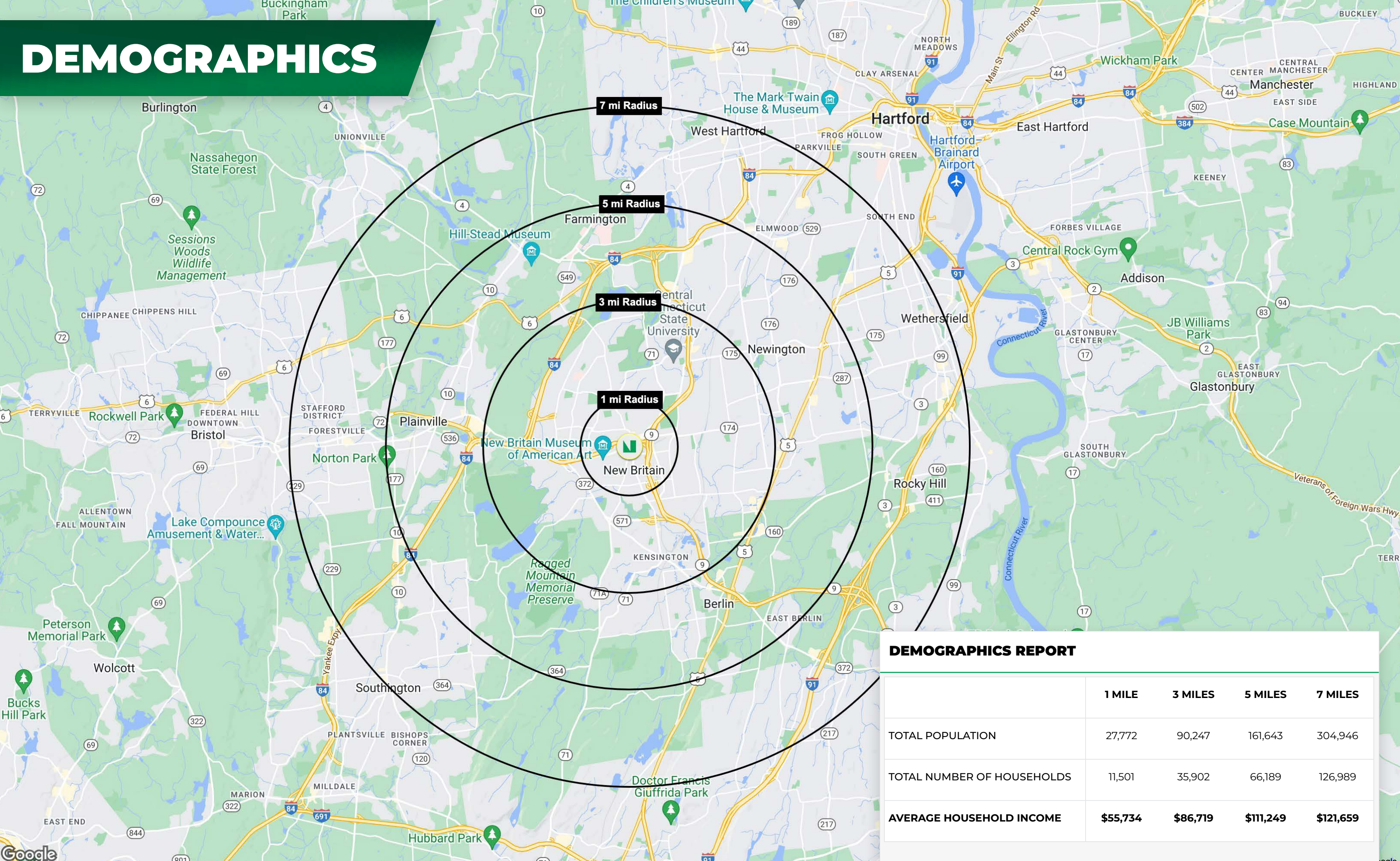
**Firestone**

**Shell**

**DUNKIN'**



# DEMOGRAPHICS



DEMOGRAPHICS REPORT				
	1 MILE	3 MILES	5 MILES	7 MILES
TOTAL POPULATION	27,772	90,247	161,643	304,946
TOTAL NUMBER OF HOUSEHOLDS	11,501	35,902	66,189	126,989
AVERAGE HOUSEHOLD INCOME	\$55,734	\$86,719	\$111,249	\$121,659





## CONTACT

Kerry Wood

D: 860.529.9000 X 102 | C: 203.502.1794

E: [kwood@newenglandretail.com](mailto:kwood@newenglandretail.com)

[www.newenglandretail.com](http://www.newenglandretail.com)

 **New England**  
Retail Properties, Inc.



NO WARRANTY OR REPRESENTATION, EXPRESSED OR IMPLIED, IS MADE AS TO THE ACCURACY OF THE INFORMATION CONTAINED HEREIN, AND SAME IS SUBMITTED SUBJECT TO ERRORS, CHANGE OR PRICE, RENTAL OR OTHER CONDITIONS, WITHDRAWAL WITHOUT NOTICE, AND TO ANY SPECIAL LISTING CONDITIONS IMPOSED BY OUR PRINCIPALS.