



**MACKINTOSH, Inc.**  
COMMERCIAL BROKERAGE

**For Lease - \$14 / SF +NNN**  
**4,720 SF with Office Mezzanine**

**For Lease Retail / Warehouse**  
**Stand Alone Retail/Warehouse Building**  
**35 W Pennsylvania Avenue,**  
**Walkersville, MD 21793**



**4,720 SF Stand Alone Building with a Mezzanine Office**  
**that overlooks open floor area.**

**Quick Access to Route 26 (Liberty Road)**

**10' x 10' Drive-In Door in Warehouse Area,2**  
**Contact Listing Agent for More Information.**

*All information is deemed reliable, but not guaranteed.*

**FOR ADDITIONAL INFORMATION CONTACT:**

**Jody Bell - Call: 240-674-3937**

**Email: [Jody@Ngreen.com](mailto:Jody@Ngreen.com)**

**or Nancy Green - Call: 301-748-3321**

**Mackintosh Commercial Brokerage**

262 W. Patrick Street Frederick, Maryland 21701

O: 1-800-727-SOLD ext.235

Fax #: 301-846-4317

Email: [Nancy@ngreen.com](mailto:Nancy@ngreen.com)

Website: <http://www.ngreen.com/>



# Walkersville Market - 35 W. Pennsylvania Avenue



**View East Side**



**View East Front**



**View South Front**



**View of Porch**



**Entrance Door**



**Warehouse Side Door**



**1<sup>st</sup> Fl. Office Door**



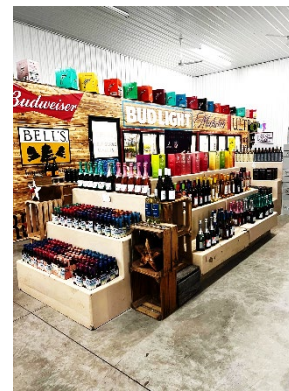
**Warehouse Bay Door**



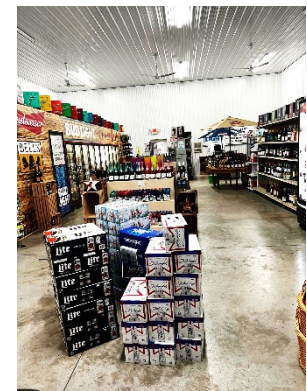
**View Front Porch**



**Liquor Store Cooler**



**Liquor Store Shelving**



**Liquor Store Inventory**

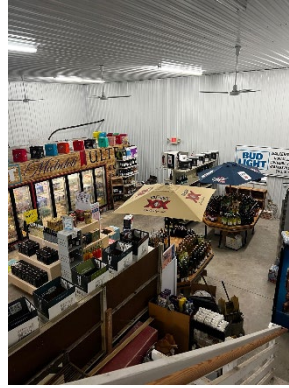
# Walkersville Market - 35 W. Pennsylvania Avenue



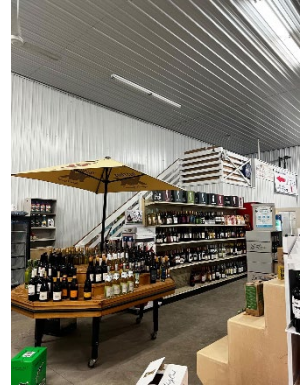
**Liquor Coolers**



**Inventory Stock**



**View from Mezzanine**



**Mezzanine Office**



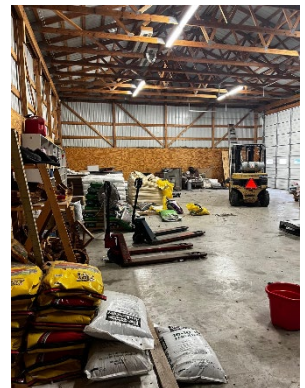
**Inventory Shelves**



**Restroom**



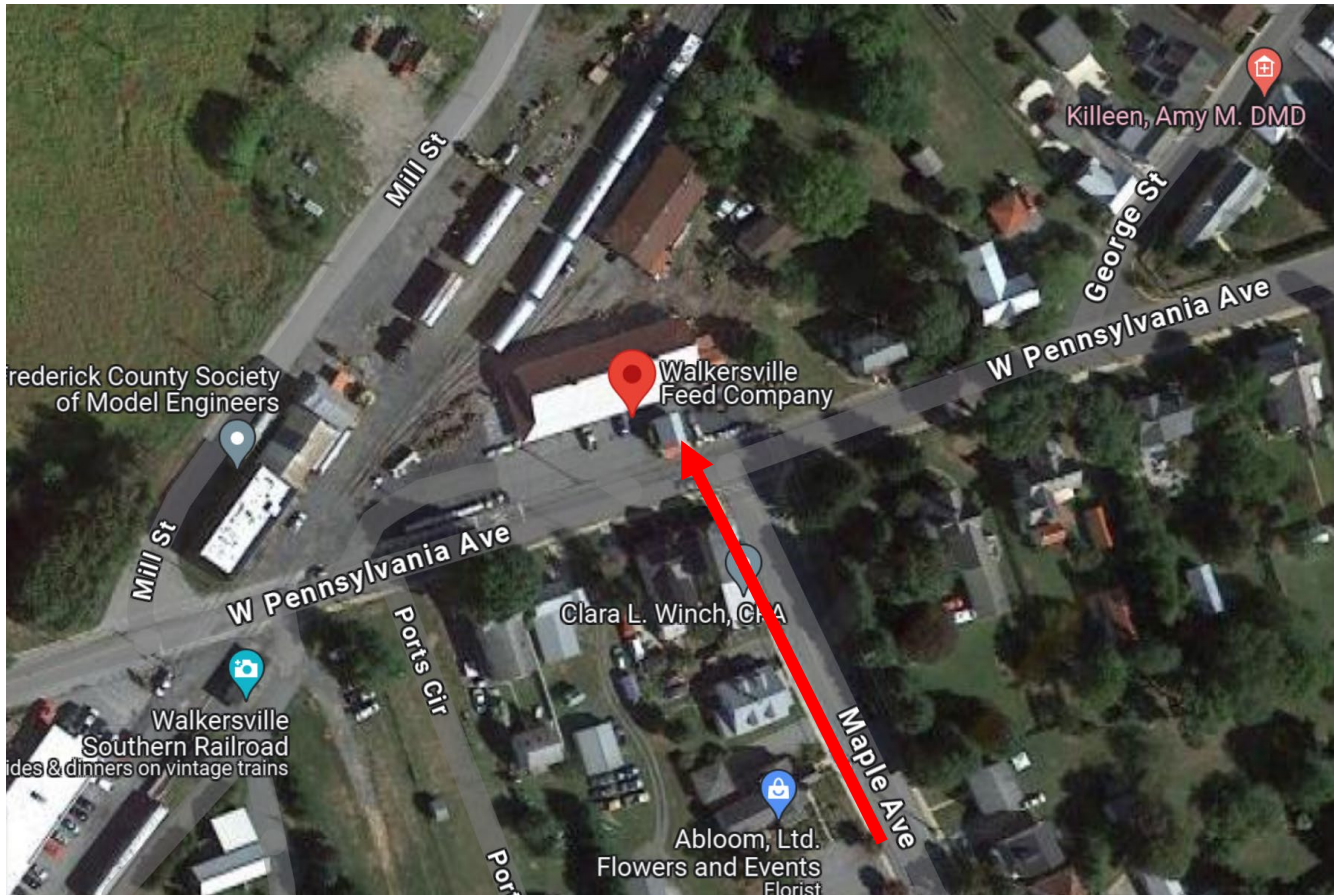
**Warehouse View  
with Roll Up**



**Warehouse View**



## Directions: Walkersville Market 35 W. Pennsylvania Avenue



**Directions:** From Northside Frederick on MD Hwy 26 & Hwy 15 Intersection, Continue East on Liberty Road (Route 26), Turn Left onto Hwy 194 (Woodsboro Pike) at Ceresville Mansion Intersection with Liberty Road. Continue on Hwy 194 (Woodsboro Pike), then Turn Left onto Nicodemus Road. Continue on Nicodemus Road then Turn Right onto West Frederick Street. Turn Left onto Maple Avenue to the Intersection of Maple and West Pennsylvania Avenue. Across the Street, pull into parking spaces at Walkersville Feed Company.

**FOR ADDITIONAL INFORMATION CONTACT:**

**Jody Bell - Call: 240-674-3937**

**Email: [Jody@Ngreen.com](mailto:Jody@Ngreen.com)**

**or Nancy Green - Call: 301-748-3321**

**Mackintosh Commercial**

262 W. Patrick Street

Frederick, Maryland 21701

Broker: 1-800-727-SOLD

Fax #: 1-240-489-7932

Email: [Nancy@ngreen.com](mailto:Nancy@ngreen.com)

Web: [www.NGreen.com](http://www.NGreen.com)