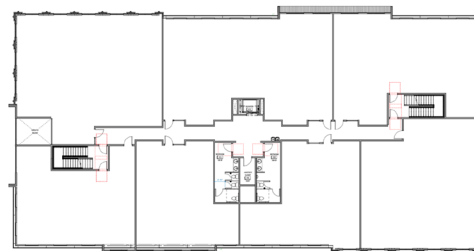
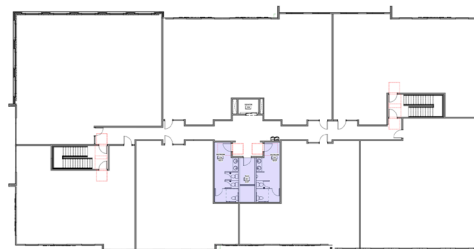


**LEVEL 1**



**LEVEL 2**



**LEVEL 3**

## SUITE CUSTOMIZATION

DESIGN YOUR OWN SPACE

SUITE SIZE: 1,200 - 15,000 SQFT

GENEROUS TI ALLOWANCE

**NOW PRE-LEASING**

# STANSBURY PARK OFFICES

583 STANSBURY PARKWAY AVE. STANSBURY PARK, UT 84074

## PROPERTY HIGHLIGHTS

REACH INTO MULTIPLE MARKETS

UNIQUE MODERN ARCHITECTURE

PREMIER ACCESS ON CITY'S  
BUSIEST INTERSECTION

## LEASE INFORMATION

OWNERSHIP AVAILABLE

FREE RENT OPTIONS

CROWN SIGNAGE OPPORTUNITIES