

Country Mile Village | 1098 Mt. Kemble Avenue | Morristown, NJ 07960

2,500 SF AVAILABLE FOR LEASE



PROPERTY HIGHLIGHTS

- **Available:** Units E & F - 2,500 SF (Former Credit Union with drive-thru)
- **Zoning:** B-2 Business Zone. Permitted uses include retail sales and services as well as professional offices
- **Utilities:** Electric, Septic & Well Water
- **Traffic Count (CoStar 2020):** 10,511 Vehicles Daily
- **RE Taxes/CAM (2026):** \$7.03 PSF
- **Lease Rate:** \$29.50 PSF NNN
- **Location:** Located on Mt. Kemble Avenue (aka Route 202) only 1/2 mile to Route 287. Minutes to Bernardsville and Morristown. Just north of Verizon HQ/North Maple Avenue Complex



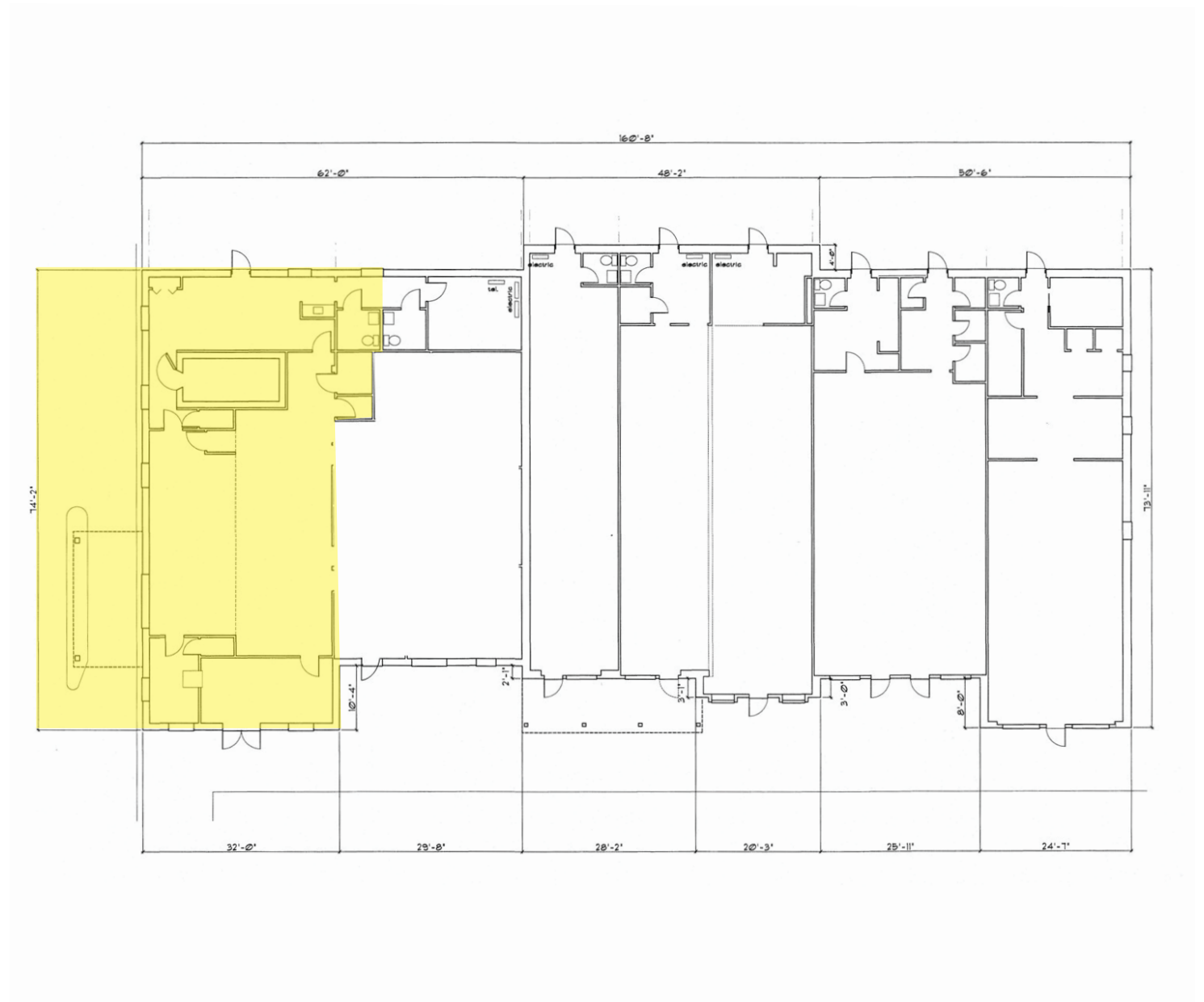
DEMOGRAPHICS	3 MILES	5 MILES	10 MILES
Total Households	4,838	19,454	133,275
Total Population	13,396	53,005	370,555
Average HH Income	\$185,105	\$178,947	\$166,704

SARA SOLIMAN

Sales & Leasing Associate
908.360.8051
ssoliman@kislakrealty.com

Kislak Commercial Real Estate Services, Inc.
100 Woodbridge Center Drive
Woodbridge, NJ 07095
908.360.8050 | kislakrealty.com

FLOOR PLAN



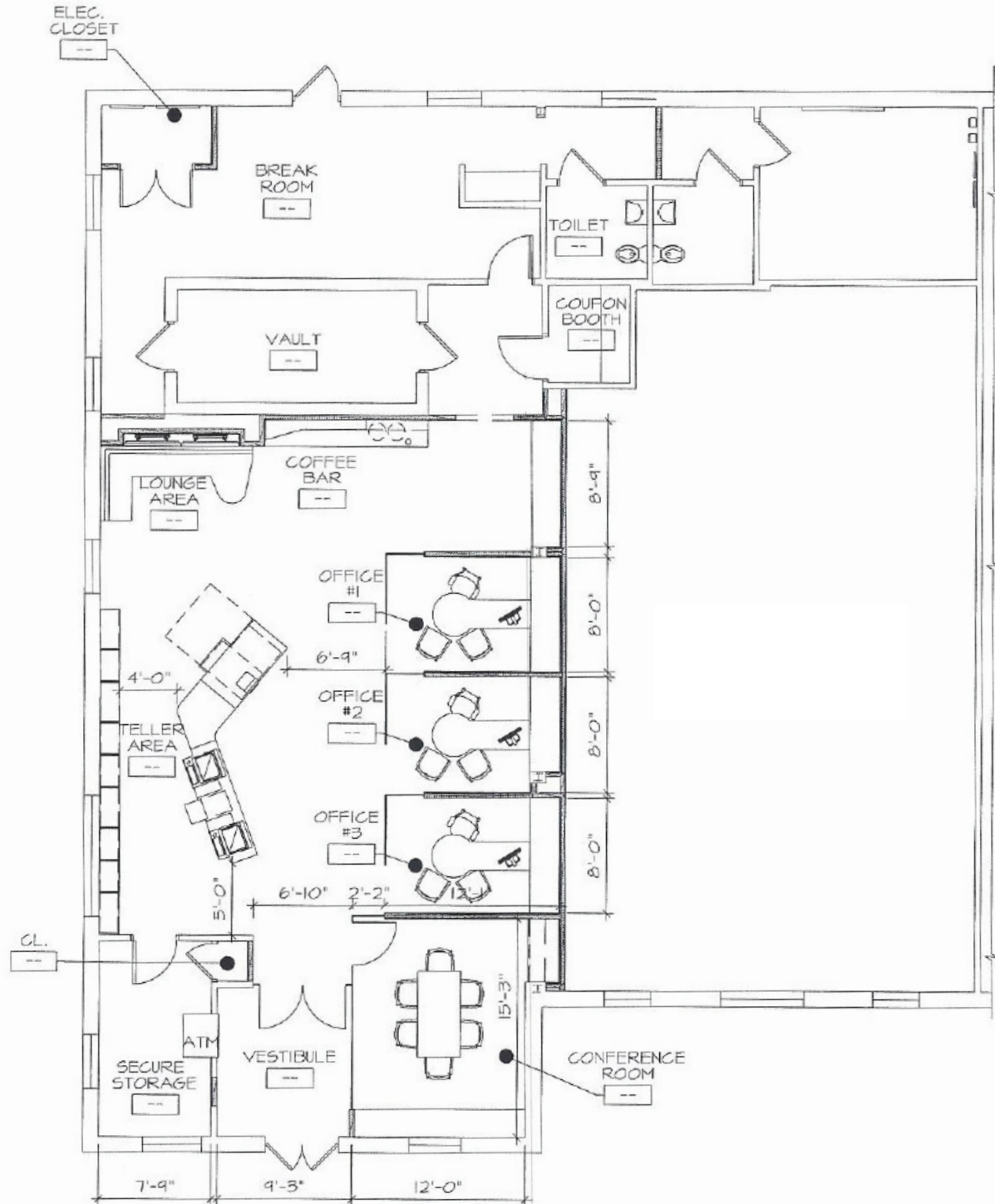
SARA SOLIMAN

Sales & Leasing Associate
908.360.8051
ssoliman@kislakrealty.com

Kislak Commercial Real Estate Services, Inc.
100 Woodbridge Center Drive
Woodbridge, NJ 07095
908.360.8050 | kislakrealty.com

Country Mile Village | 1098 Mt. Kemble Avenue | Morristown, NJ 07960

FLOOR PLAN | UNITS E & F

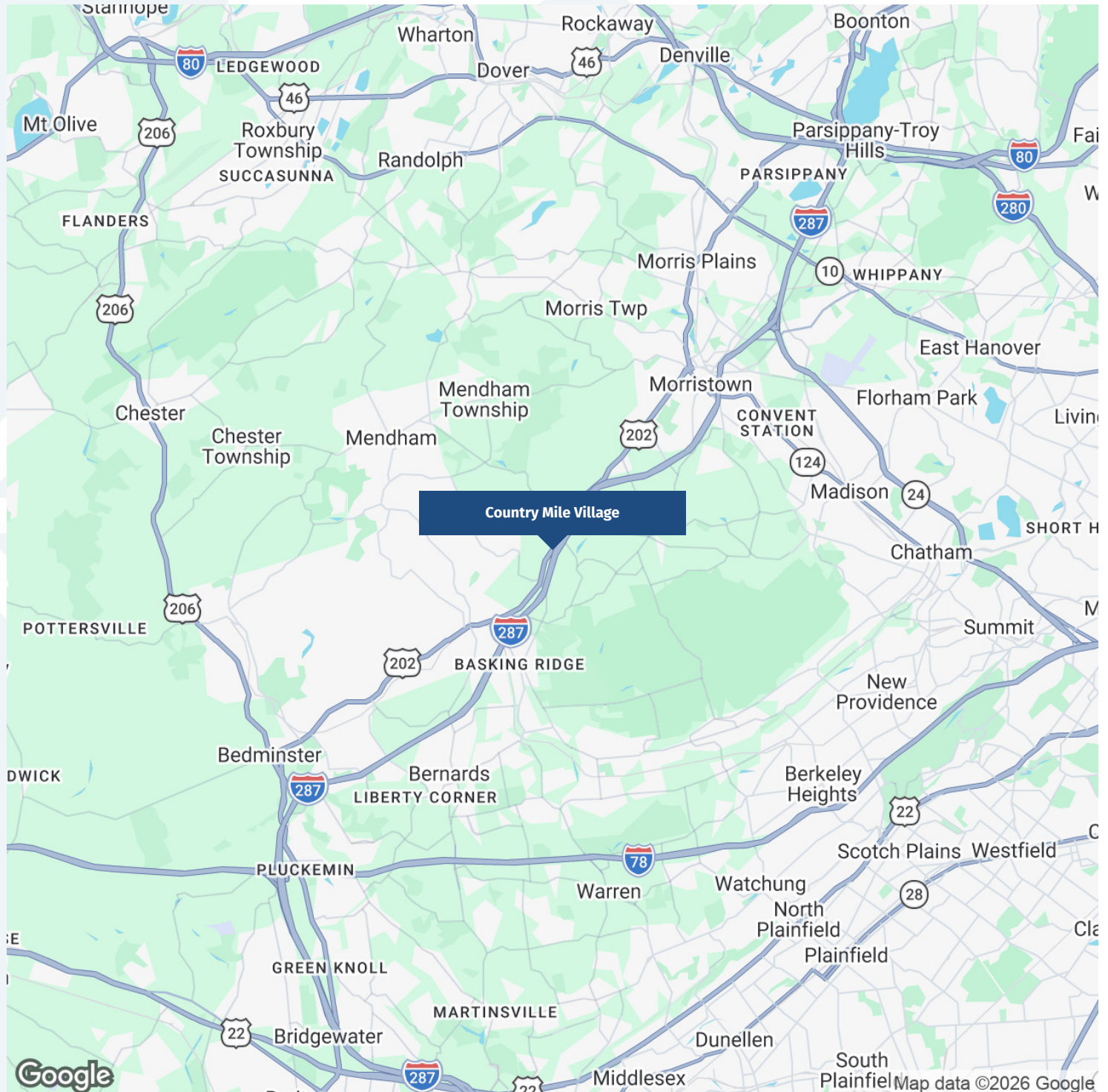


SARA SOLIMAN

Sales & Leasing Associate
908.360.8051
ssoliman@kislakrealty.com

Kislak Commercial Real Estate Services, Inc.
100 Woodbridge Center Drive
Woodbridge, NJ 07095
908.360.8050 | kislakrealty.com

LOCATION MAPS



SARA SOLIMAN

Sales & Leasing Associate
908.360.8051
ssoliman@kislakrealty.com

Kislak Commercial Real Estate Services, Inc.
100 Woodbridge Center Drive
Woodbridge, NJ 07095
908.360.8050 | kislakrealty.com