

FOR LEASE

Pima Norte

36600 N PIMA RD

Carefree, AZ 85377

PRESENTED BY:

JUSTIN HORWITZ, SIOR

O: 480.425.5518

justin.horwitz@svn.com

RICHARD LEWIS JR.

O: 480.425.5536

richard.lewis@svn.com



PROPERTY SUMMARY



OFFERING SUMMARY

OFFICE AVAILABILITY	Suite 302	±949 SF	\$22.00 PSF FS
	Suite 306	±900 SF	\$22.00 PSF FS
	Suite 402-403	±2,626	\$22.00 PSF FS
EXECUTIVE OFFICE AVAILABILITY	Suite 202	3 Rooms w/ reception	\$1,600/Mo FS
	Suite 303-2	1 Room w/o Window	\$550/Mo. FS
	Suite 303-6	1 Room w/ Window	\$650/Mo. FS

PROPERTY HIGHLIGHTS

- Executive Suites and Traditional Size Office Spaces Available
- Move-In Ready Condition
- Furniture Available in Some Suites
- Ideal Location Near Desert Mountain and Other Private Clubs
- Professionally Managed Office Complex
- Perfect For Most Any Small Business

E CAVE CREEK RD

N PIMA RD

BUILDING 1

103

107

EXECUTIVE SUITES

104-105

BUILDING 5

BUILDING 4

BUILDING 3

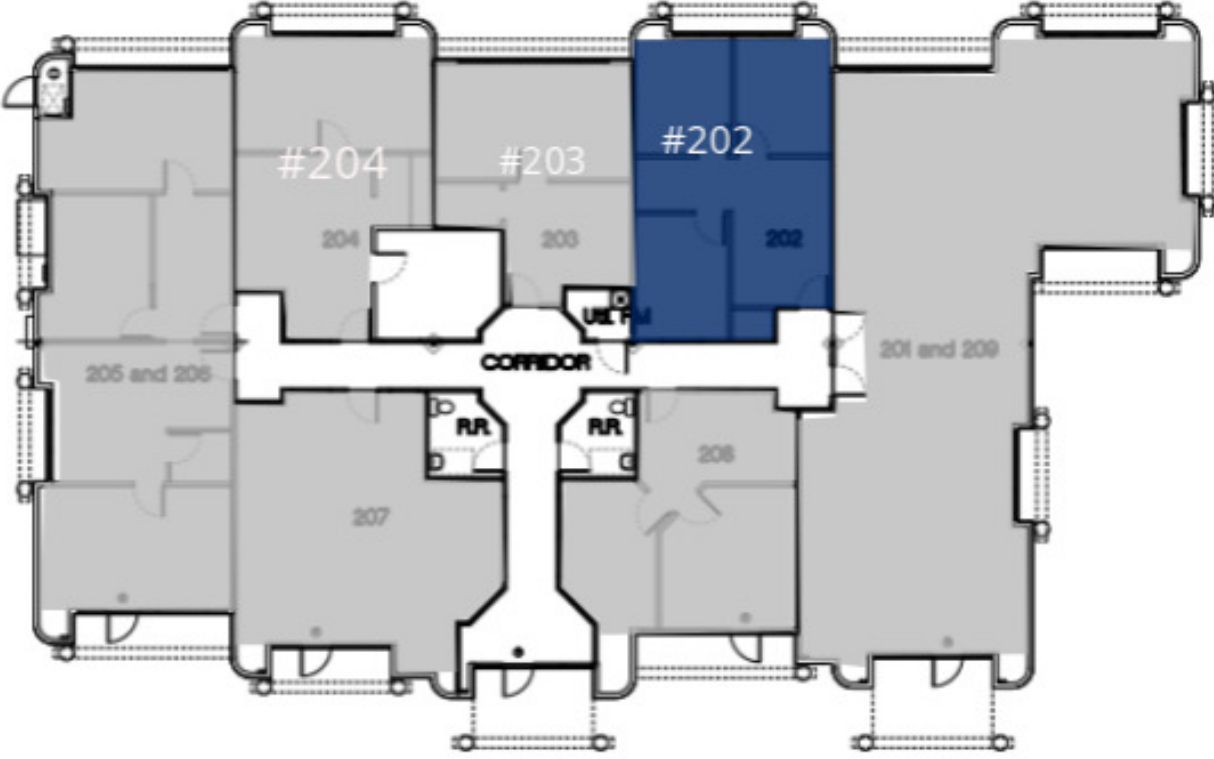
EXECUTIVE SUITES

BUILDING 2

EXECUTIVE SUITES



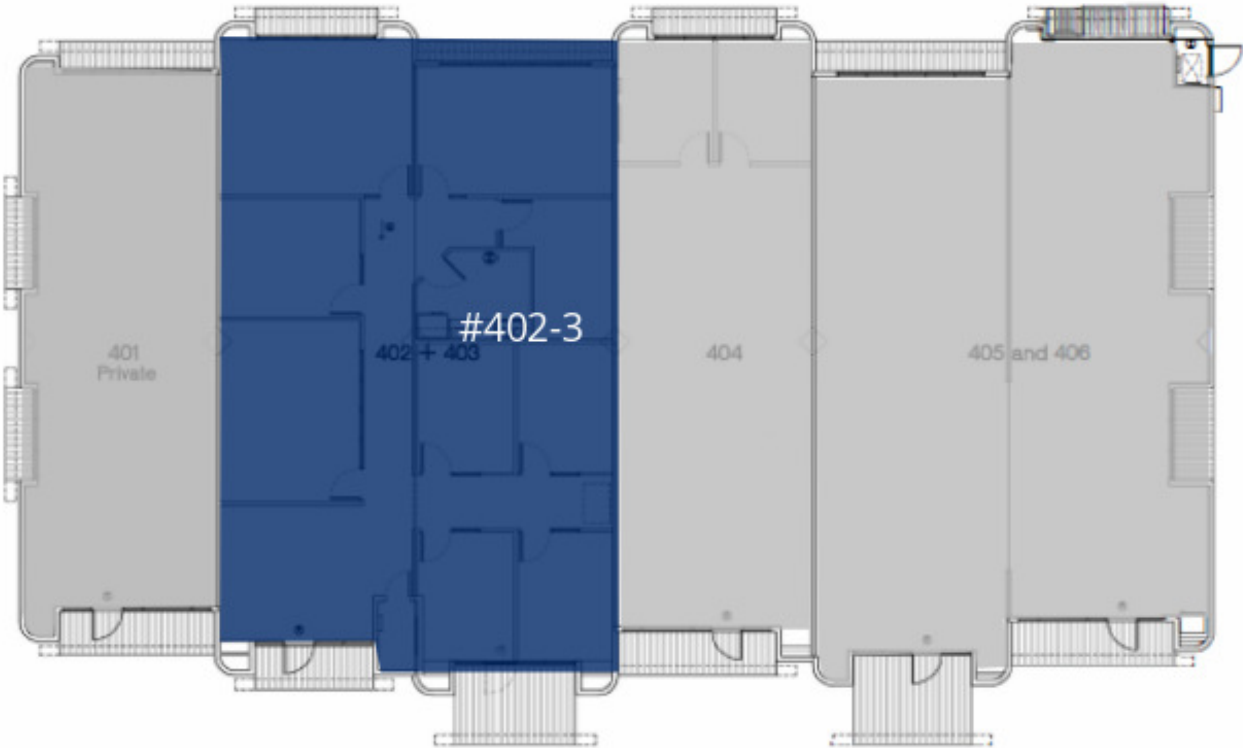
BUILDING 2



BUILDING 3



BUILDING 4



DEMOGRAPHICS MAP & REPORT

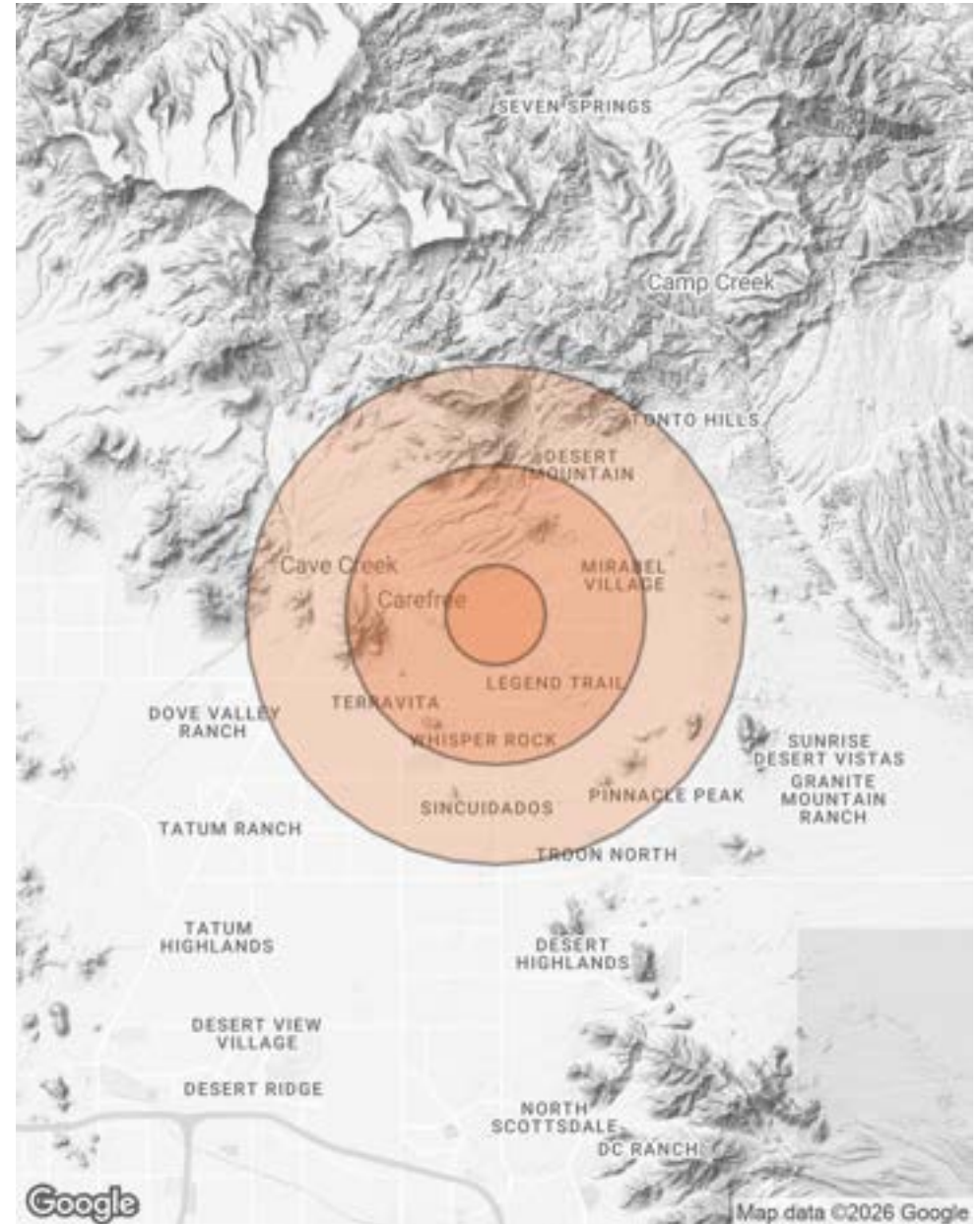
POPULATION

	1 MILE	3 MILES	5 MILES
TOTAL POPULATION	1,150	8,625	24,147
AVERAGE AGE	65.8	65.2	59.1
AVERAGE AGE (MALE)	67.6	66.9	60.0
AVERAGE AGE (FEMALE)	63.3	63.5	58.7

HOUSEHOLDS & INCOME

	1 MILE	3 MILES	5 MILES
TOTAL HOUSEHOLDS	734	5,572	13,362
# OF PERSONS PER HH	1.6	1.5	1.8
AVERAGE HH INCOME	\$146,688	\$131,437	\$131,250
AVERAGE HOUSE VALUE	\$837,072	\$826,373	\$768,799

* Demographic data derived from 2020 ACS - US Census



PRESENTED BY:

Justin Horwitz, SIOR

O: 480.425.5518
justin.horwitz@svn.com

Richard Lewis Jr.

O: 480.425.5536
richard.lewis@svn.com

