

# SUBLEASE AVAILABLE

321 MAIN STREET S  
SUITE B  
STILLWATER, MN 55082



## 2,259 SF Office/Retail Space



COMMERCIAL REAL ESTATE SERVICES

**Jon Whitcomb** *Principal | Broker*

1950 Northwestern Ave N #101  
Stillwater, MN 55082

Direct 651.351.5130  
Office 651.351.5005

Email [Jon@MetroEastCRE.com](mailto:Jon@MetroEastCRE.com)  
Web [www.MetroEastCRE.com](http://www.MetroEastCRE.com)

# FOR SUBLEASE: Downtown Stillwater Office/Retail

321 Main Street S, Suite B | Stillwater, MN 55082



321 Main Street S is a classic building in the Historic District of Downtown Stillwater. Prominently located on the corner of Main and Nelson Street. The building features St Croix River views, brick and timber construction, and storage.

## Property Information

Building Size:	11,260 SF
Available SF:	Suite B: 2,259 SF
Lease Rate:	\$16.00 PSF
2025 Tax & CAM:	\$9.01 PSF
Date Available:	August 1, 2025 with 30-day notice
Year Built:	1913
Parking:	Street Parking



COMMERCIAL REAL ESTATE SERVICES

**Jon Whitcomb** *Principal | Broker*

1950 Northwestern Ave N #101  
Stillwater, MN 55082

Direct 651.351.5130  
Office 651.351.5005

Email [Jon@MetroEastCRE.com](mailto:Jon@MetroEastCRE.com)  
Web [www.MetroEastCRE.com](http://www.MetroEastCRE.com)

The information contained herein has been provided by the property owner or obtained from sources deemed reliable. Although the information is believed to be accurate, it is not guaranteed. The property is subject to price change, prior sale or lease and withdrawal from the market, without notice. Buyer is responsible to conduct its own due diligence, as this offering contains no representations or warranties.

# FOR SUBLEASE: Downtown Stillwater Office/Retail

321 Main Street S, Suite B | Stillwater, MN 55082



COMMERCIAL REAL ESTATE SERVICES

**Jon Whitcomb** *Principal | Broker*

1950 Northwestern Ave N #101  
Stillwater, MN 55082

Direct 651.351.5130  
Office 651.351.5005

Email [Jon@MetroEastCRE.com](mailto:Jon@MetroEastCRE.com)  
Web [www.MetroEastCRE.com](http://www.MetroEastCRE.com)

The information contained herein has been provided by the property owner or obtained from sources deemed reliable. Although the information is believed to be accurate, it is not guaranteed. The property is subject to price change, prior sale or lease and withdrawal from the market, without notice. Buyer is responsible to conduct its own due diligence, as this offering contains no representations or warranties.

# FOR SUBLEASE: Downtown Stillwater Office/Retail

321 Main Street S, Suite B | Stillwater, MN 55082



- Main Cafe
- Black Letter Books
- Ziggy's on Main
- Minnesota Made
- Quickfire Pizza
- No Neck Tony's
- Locale Maker's Market

- Grand Garage
- Nacho Mama's
- Tremblay's Sweet Shop
- Howard's Bar
- Grand Pizza
- The Tilted Tiki
- Accents Antiques
- Mad Capper Saloon
- Studio 214
- Stillwater Olive Oil
- Carpe Noctem Candle Co
- USBank
- Kari's Create & Paint

- Leo's Grill & Malt Shop
- All Things Sheared
- Stokes Jewelry Services
- Stillwater Antiques
- Water Street Inn

- Midtown Antique Mall
- Portside
- Lolito Cantina
- LoLo American Kitchen
- Stillwater Proper
- Brian's Bar and Grill
- Brick & Bourbon
- Green Bridge Coffee Shop



COMMERCIAL REAL ESTATE SERVICES

**Jon Whitcomb** Principal | Broker

1950 Northwestern Ave N #101  
Stillwater, MN 55082

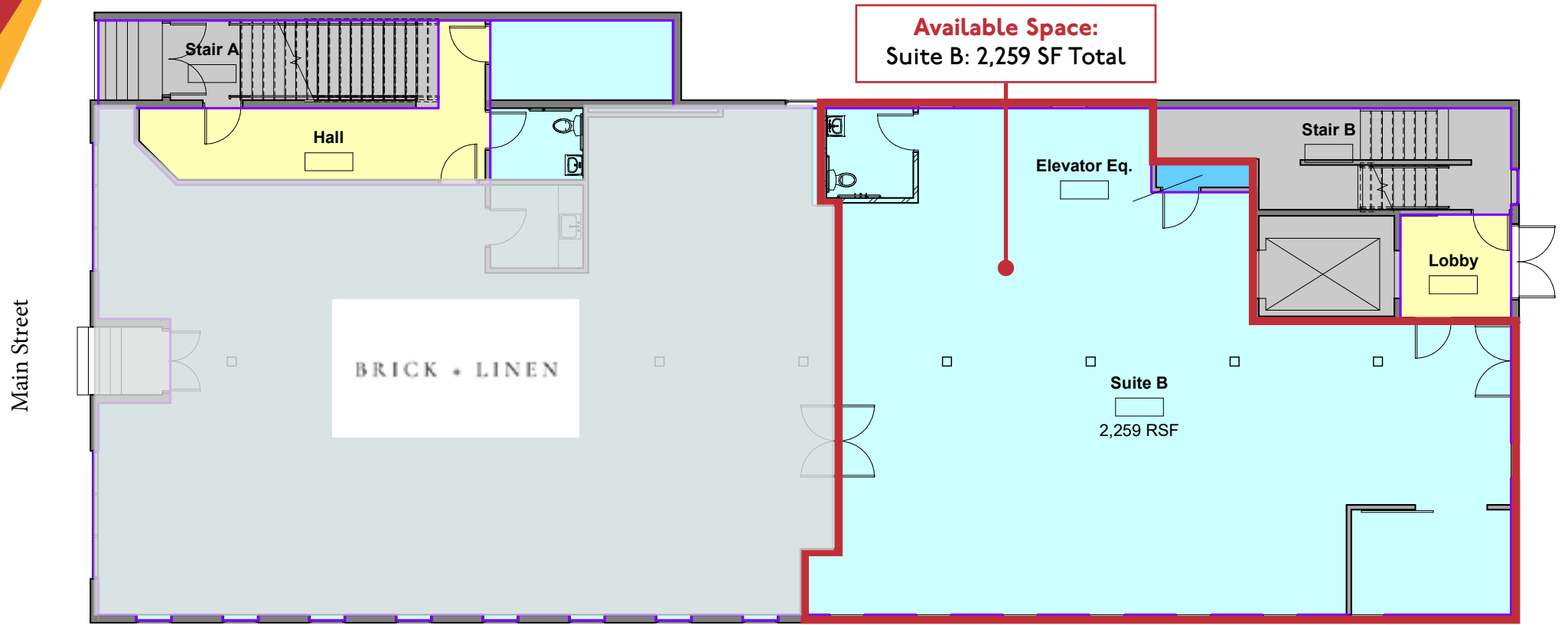
Direct 651.351.5130  
Office 651.351.5005

Email [Jon@MetroEastCRE.com](mailto:Jon@MetroEastCRE.com)  
Web [www.MetroEastCRE.com](http://www.MetroEastCRE.com)

The information contained herein has been provided by the property owner or obtained from sources deemed reliable. Although the information is believed to be accurate, it is not guaranteed. The property is subject to price change, prior sale or lease and withdrawal from the market, without notice. Buyer is responsible to conduct its own due diligence, as this offering contains no representations or warranties.

# FOR SUBLEASE: Downtown Stillwater Office/Retail

321 Main Street S, Suite B | Stillwater, MN 55082



1 First Floor - Rentable RSF  
1/8" = 1'-0"



COMMERCIAL REAL ESTATE SERVICES

**Jon Whitcomb** Principal | Broker

1950 Northwestern Ave N #101  
Stillwater, MN 55082

Direct 651.351.5130  
Office 651.351.5005

Email Jon@MetroEastCRE.com  
Web [www.MetroEastCRE.com](http://www.MetroEastCRE.com)

The information contained herein has been provided by the property owner or obtained from sources deemed reliable. Although the information is believed to be accurate, it is not guaranteed. The property is subject to price change, prior sale or lease and withdrawal from the market, without notice. Buyer is responsible to conduct its own due diligence, as this offering contains no representations or warranties.