

For Sale

9100 N WILBUR AVE



SUBJECT
PROPERTY

PORTLAND, OR 97217

km Kidder
Mathews

9100 N WILBUR AVE



FEATURES

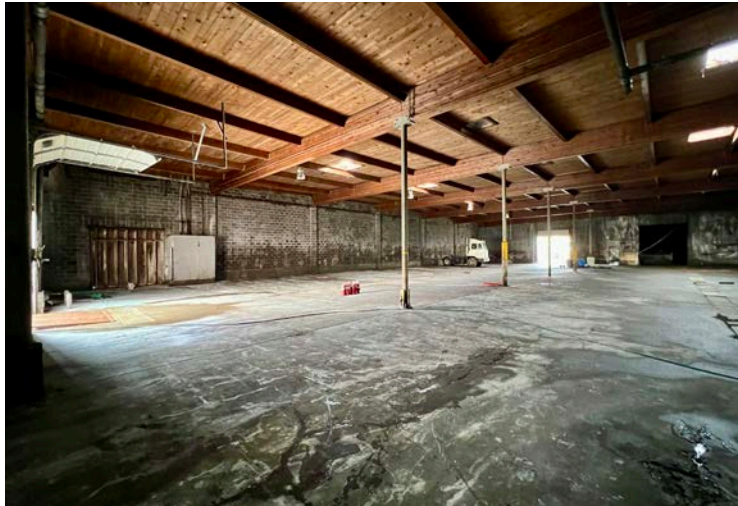
ADDRESS	9100 N Wilbur Ave, Portland, OR 97217
NRSF	26,224 SF
SITE AREA	1.08 AC (47,045 SF)
PARCEL	R242359
ZONING	IH (Heavy Industrial)
YEAR BUILT	1968
CLEAR HEIGHT	20'
LOADING	3 dock doors & 1 grade level door
RAIL ACCESS	Yes
PRICE	Call for pricing

26.2K SF

SIZE AVAILABLE

CALL

SALE PRICE



PROPERTY HIGHLIGHTS

Zoning: Heavy Industrial (IH)

Specific allowable uses include manufacturing, warehouse and freight movement, wholesale sales, industrial services, and railroad yards

Steel reinforced masonry walls

Dedicated rail served

A drive to downtown Portland is a mere 7-8 minutes away

SITE PLAN





9100 N
WILBUR AVE

Exclusively listed by

STEVE BOWERS

503.721.2715

steve.bowers@kidder.com

KIDDER.COM

This information supplied herein is from sources we deem reliable. It is provided without any representation, warranty, or guarantee, expressed or implied as to its accuracy. Prospective Buyer or Tenant should conduct an independent investigation and verification of all matters deemed to be material, including, but not limited to, statements of income and expenses. Consult your attorney, accountant, or other professional advisor.

km Kidder
Mathews