

# 150 COLUMBIA ST

CAMBRIDGE, MA





# Opportunity Overview

Exciting retail/office opportunity at 150 Columbia Street, Cambridge! This highly visible, 1,000 SF street-level space with additional basement storage is part of a prominent mixed-use redevelopment. Situated on a corner within walking distance to Central Square and Kendall Square MBTA Red Line stations, and close to Harvard Square and MIT, this location provides excellent access to both local foot traffic and public transit. Ideal for a variety of neighborhood businesses, including a bank, daycare, real estate office, architectural firm, or boutique retail. Non-food use only.

Contact us today to schedule a viewing and explore the potential of this exceptional space.

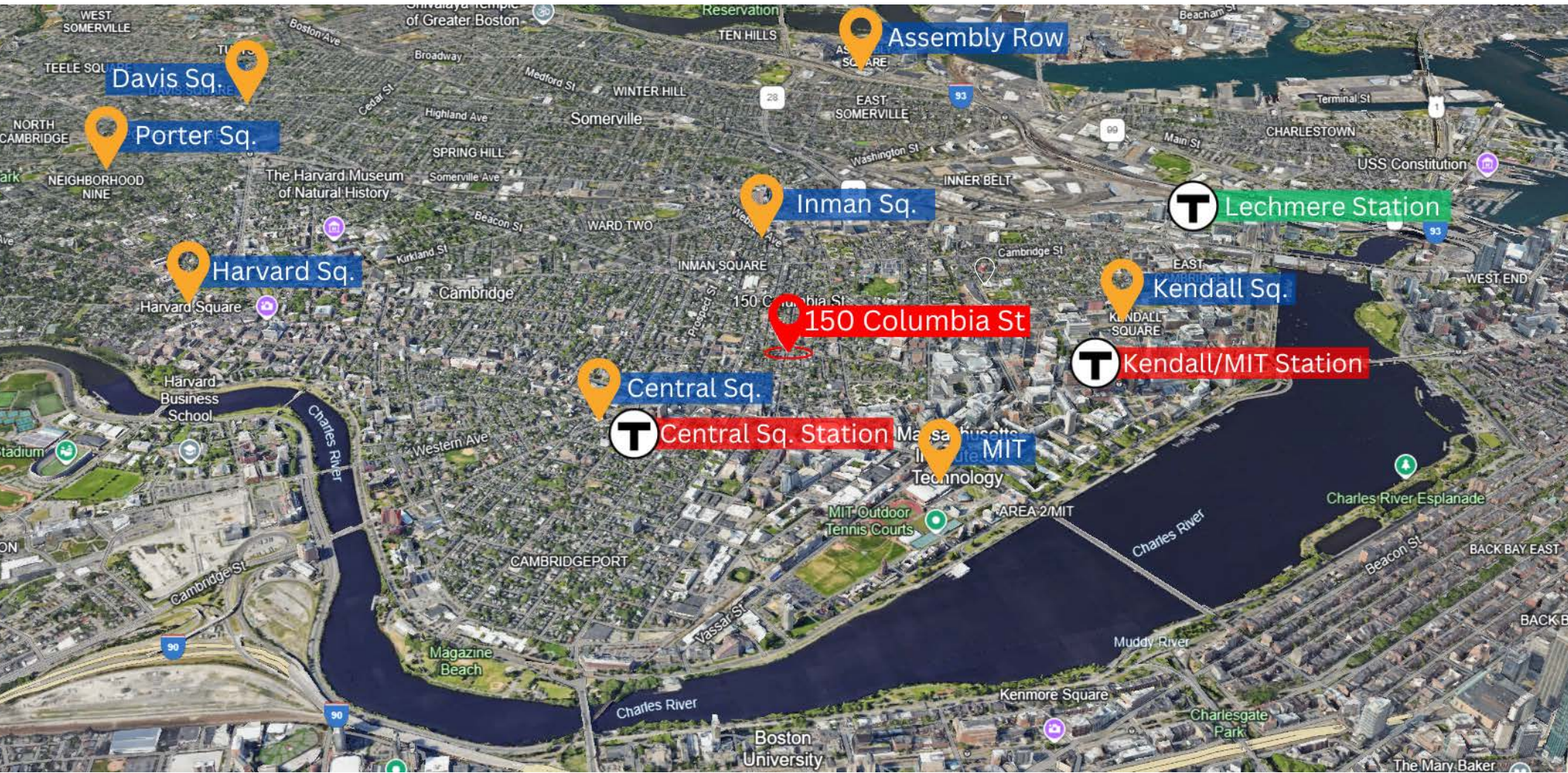


## HIGHLIGHTS

- In walking distance to Central Sq. & Kendall Sq.
- Densely Populated Neighborhood
- Corner location with significant signage visibility
- Basement Storage
- New Construction
- Zoned C-1

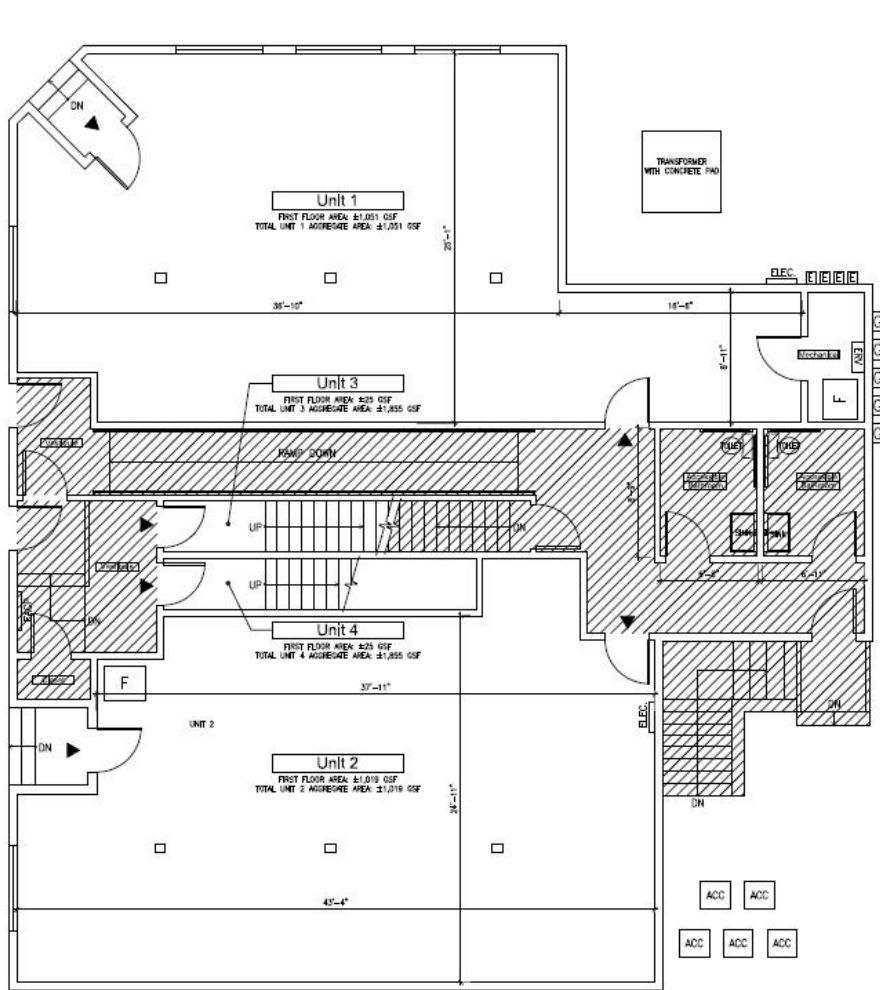


# AREA OVERVIEW

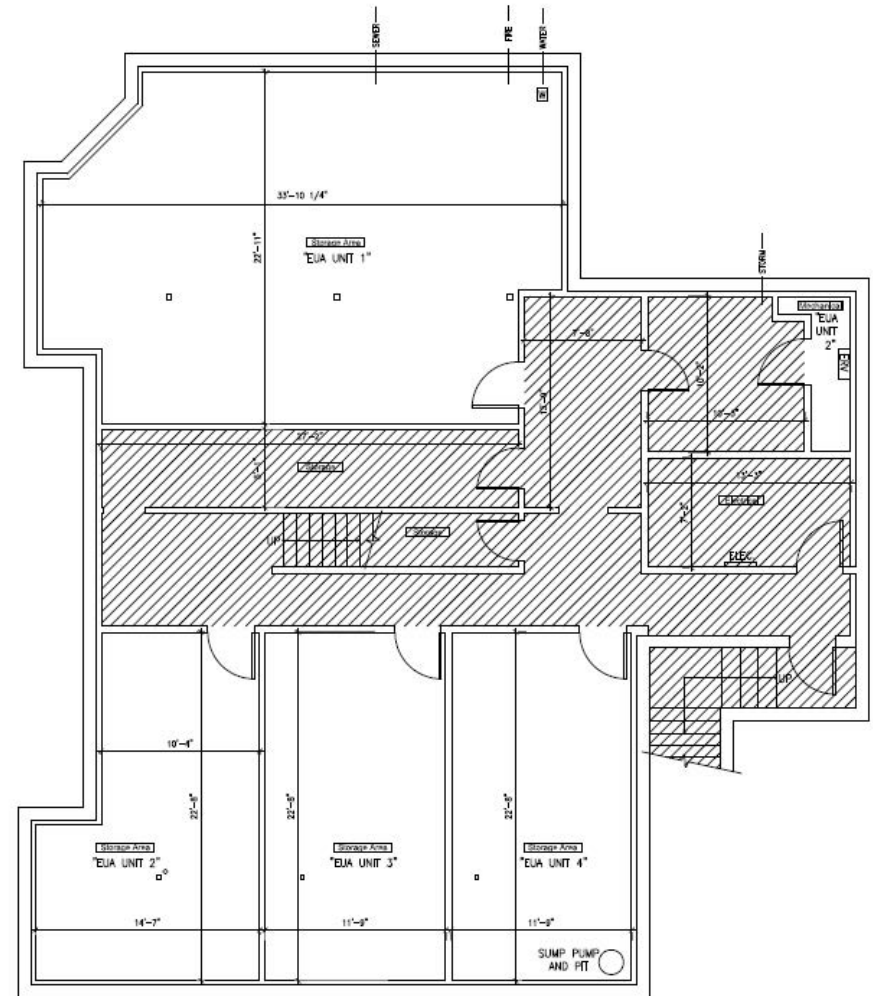




# FLOOR PLAN



1 First Floor Plan  
Scale: 1/4" = 1'-0"



1 Basement Plan  
Scale: 1/4" = 1'-0"



## CONTACT INFORMATION



**Antonia Shelzi**  
307 Cambridge Street  
Cambridge, MA 02141  
toni@abgrealty.com  
M: 617-212-1119  
P: 617-492-9900



**Ana Oliveira**  
307 Cambridge Street  
Cambridge, MA 02141  
aoliveira@abgrealty.com  
M: 857-312-5859  
P: 617-492-9900