



AVAILABLE FOR LEASE

14 Commerce Road, Newtown, CT

ATHERTON TEAM

203.209.3337
www.buyandsellcre.com



OFFERING SUMMARY

| | |
|------------------------------|--|
| Lease Rate: | Refer to Floor Plan \$13.50/SF NNN |
| 1st Floor: | |
| 2nd Floor: | |
| Building Size: | 15,718 SF |
| Available SF | Personal Office to 7,889 SF Available |
| First Floor: | |
| Second Floor: | |
| Lot Size: | 2.00 Acres |
| Zoning: | M-5 |
| Year Built | 1980 |
| Parking | 99 Spaces |

PROPERTY OVERVIEW

The Atherton Team at BHGRE Commercial Exclusively presents for Lease 14 Commerce Road in Newtown, Connecticut. Constructed in 1980 with great attention to detail, 14 Commerce offers Office space with ample parking. The elevator serviced building features a courtyard, plenty of natural light and flexible layout perfect for a variety of industries needing office space.

The property is zoned M-5 and sits on 2 acres in lovely Newtown, CT. Located in close proximity to Exit 10 off I-84, and conveniently near Church Hill Road and Main Street, this location offers easy access to rest of Fairfield County and nearby NY State.

PROPERTY HIGHLIGHTS

- Located in Newtown, near Danbury and NY State Border
- Near I-84, CT-34 and Main Street
- Ample Parking with 90 spaces



Bryan Atherton, CCIM, SIOR
Phone: 203-209-3337
batherton@buyandsellcre.com

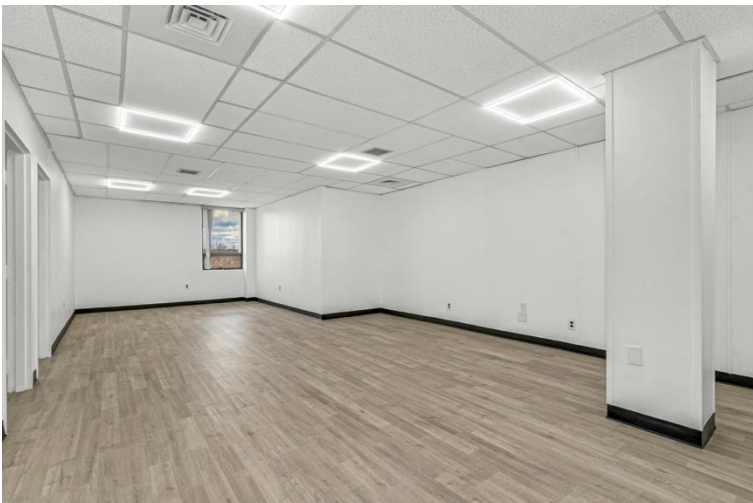


Matt Renzulli
Phone: 203-216-0285
mrenzulli@buyandsellcre.com



Colin Morrissey
203-313-3126
cmorrissey@buyandsellcre.com

Interior Photos





First Floor - Floor Plan
196 RSF - 1,700 RSF





FLOOR PLAN – SECOND FLOOR
7,889 RSF

