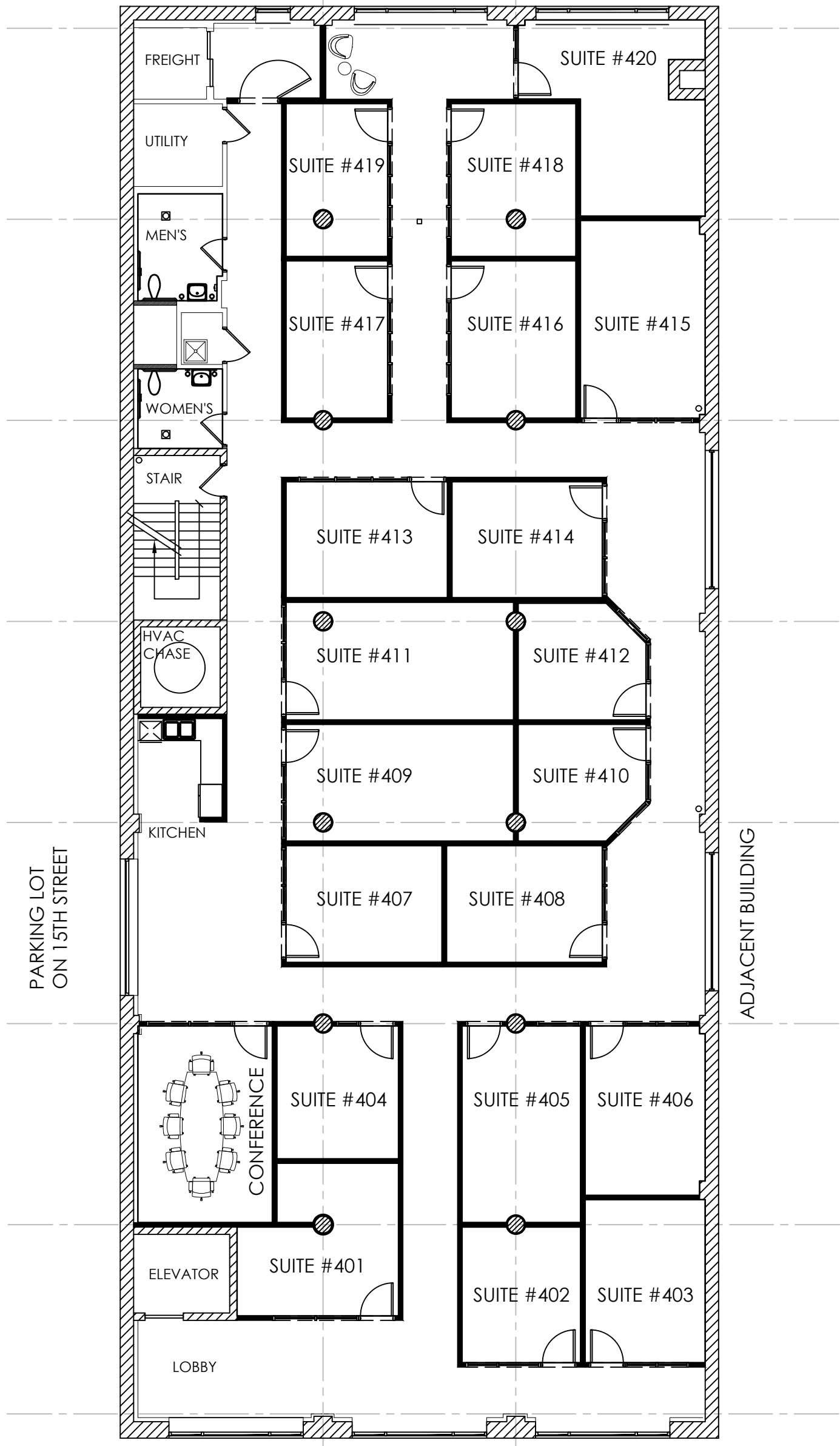


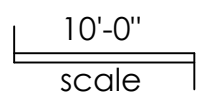
LUCAS AVE.



PARKING LOT ON 15TH STREET

ADJACENT BUILDING

WASHINGTON AVE.



**Fourth Floor Lease Plan**

**1409 Washington Ave - St.Louis MO**

**Managed by: Riley Real Estate Management, LLC 314.809.8541**

**date:  
06-27-2016**

designer: dadoworks, llc  
www.dadoworks.com  
314.776.7595