



**CUSHMAN &  
WAKEFIELD**



# MEDICAL OFFICE FOR SALE OR LEASE

460 MALABAR RD SE  
PALM BAY, FL 32907

**Anne Spencer**

Florida Healthcare Advisory Practice  
+1 407 541 4434  
anne.spencer@cushwake.com

**Angela Flint**

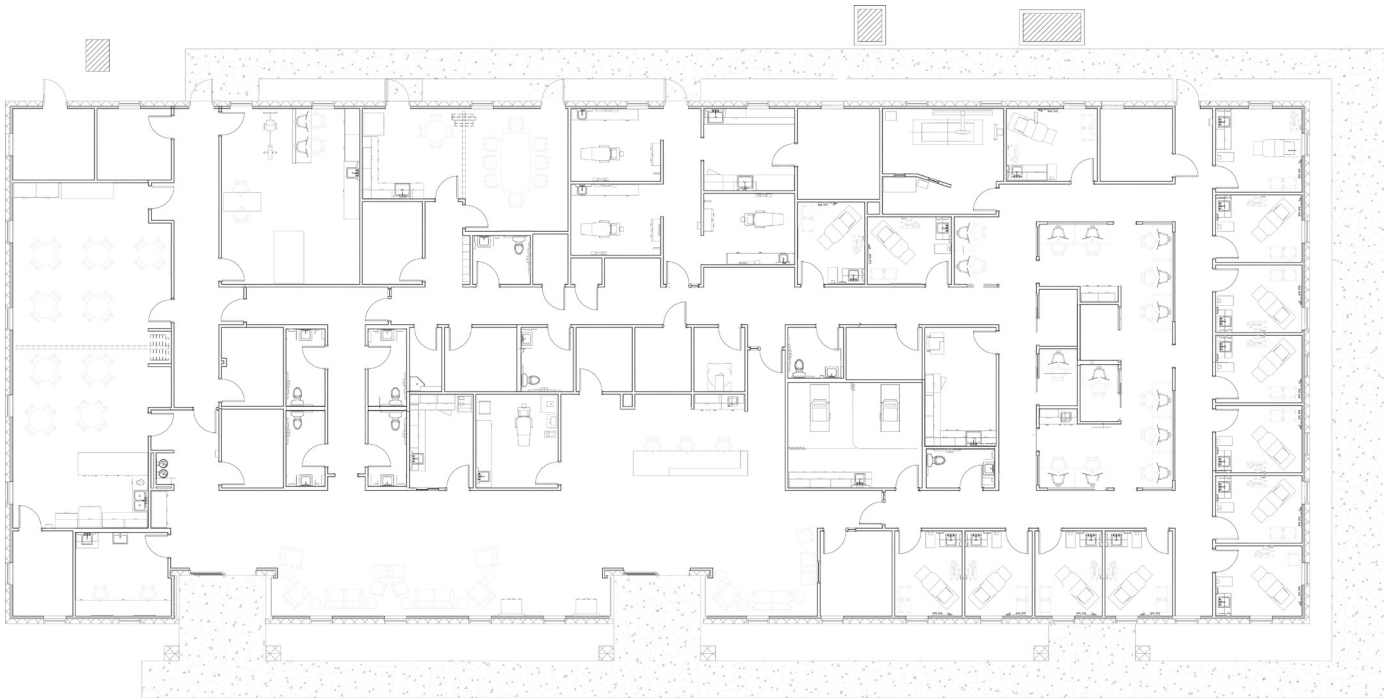
Florida Healthcare Advisory Practice  
+1 407 541 4418  
angela.flint@cushwake.com

**Mark Stratman**

Senior Director  
+1 407 448 1351  
mark.stratman@cushwake.com

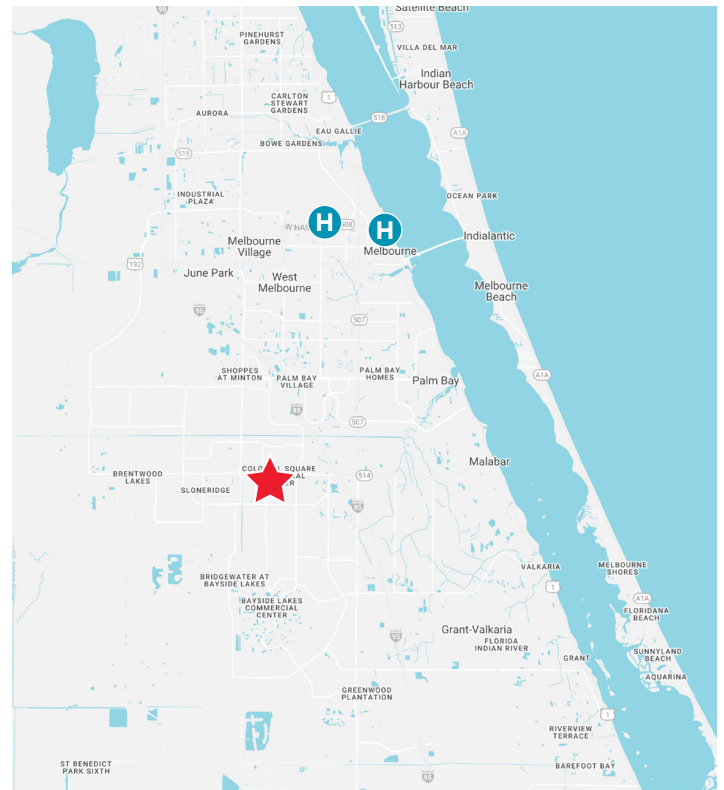
# PROPERTY INFORMATION

## FLOOR PLAN



## OPPORTUNITY HIGHLIGHTS

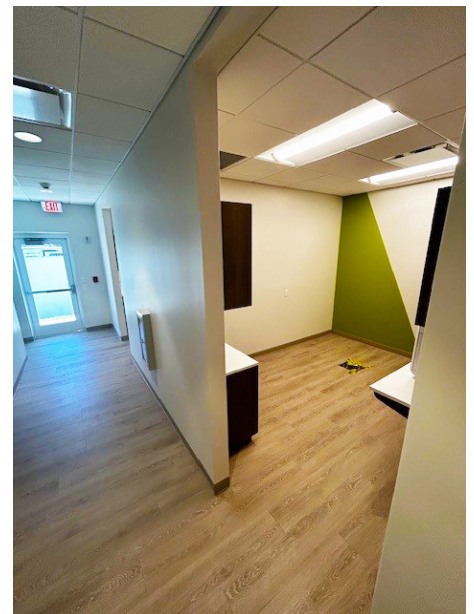
- **Brand new, fully built out medical office building!**
- 12,000 SF, freestanding building
- Ground up building delivered in 2022!
- Part of a medical park including Fresenius Kidney Care, a physician therapy group and a primary care practice
- Located in the southern portion of Brevard County with a rapidly growing retiree population
- *Perfect for an owner-user or national group seeking to capture this desirable patient base!*



# PROPERTY PHOTOGRAPHS

## PROPERTY HIGHLIGHTS

- 10 exam rooms
- 3 dental chair areas + dental lab
- Optical exam room
- X-ray with led-lined walls
- Large area for Community Classes or Physical Therapy
- Lab, nurse station, multiple offices and restrooms





## CUSHMAN & WAKEFIELD

### **Anne Spencer**

Florida Healthcare Advisory Practice  
+1 407 541 4434  
anne.spencer@cushwake.com

### **Angela Flint**

Florida Healthcare Advisory Practice  
+1 407 541 4418  
angela.flint@cushwake.com

### **Mark Stratman**

Senior Director  
+1 407 448 1351  
mark.stratman@cushwake.com

©2024 Cushman & Wakefield. All rights reserved. The information contained in this communication is strictly confidential. This information has been obtained from sources believed to be reliable but has not been verified. NO WARRANTY OR REPRESENTATION, EXPRESS OR IMPLIED, IS MADE AS TO THE CONDITION OF THE PROPERTY (OR PROPERTIES) REFERENCED HEREIN OR AS TO THE ACCURACY OR COMPLETENESS OF THE INFORMATION CONTAINED HEREIN, AND SAME IS SUBMITTED SUBJECT TO ERRORS, OMISSIONS, CHANGE OF PRICE, RENTAL OR OTHER CONDITIONS, WITHDRAWAL WITHOUT NOTICE, AND TO ANY SPECIAL LISTING CONDITIONS IMPOSED BY THE PROPERTY OWNER(S). ANY PROJECTIONS, OPINIONS OR ESTIMATES ARE SUBJECT TO UNCERTAINTY AND DO NOT SIGNIFY CURRENT OR FUTURE PROPERTY PERFORMANCE.

**Cushman & Wakefield of Florida, LLC.**  
20 North Orange Avenue, Suite 300  
Orlando, FL 32801