

FOR SALE

WESTBURY PARK

14 WESTBURY PARK WAY, SUITE 202 BLUFFTON, SC 29910



VM | REAL ESTATE



CONTACT

VONNIE MAJEWSKI

843.338.1799

vonnies@vmrealestate.com

VM REAL ESTATE | 843.338.1799 | 39 PEARCE RD. BLUFFTON, SC 29910 | VMREALESTATE.COM

FOR SALE

PROPERTY OVERVIEW

14 WESTBURY PARK WAY, SUITE 202 BLUFFTON, SC 29910



OFFERING SUMMARY

Sale Price:	\$550,000
Available SF:	2023 SF
Year Built:	2000
Market:	Bluffton

PROPERTY HIGHLIGHTS

- Class A Office Condo For Sale
- Central Business District Location
- Functional Layout
- Good Parking
- Professional Tenant Mix

PROPERTY OVERVIEW

Class A office condominium for sale in Bluffton. The property is nestled in a park-like setting and centrally located in Westbury Park. This second floor unit is serviced by an elevator and two stairwells. The interior has peaked ceilings, and considerable natural light from the windows. There is an appropriately sized reception / lobby area, three private offices, a conference room, a good size break room, an open collaborative work area that could accommodate cubicles, and two restrooms. The property has a great variety of professional tenants including a real estate company, medical providers and insurance companies. Seller will also consider leasing the space.

LOCATION OVERVIEW

14 Westbury is located in the very desirable Westbury Park subdivision in Bluffton's central business district. The convenient location provides access throughout the market in minutes. The property is surrounded by medical and professional office buildings, banks, retail and residential developments. Located immediately south of Hwy 278 with easy access to the Bluffton Parkway via Simmonsville Road to the east and Buck Island Road to the west. Strong 2025 demographics indicate a population of approx. 53,000 in a five mile radius, with average household income exceeding \$136,000.

VONNIE MAJEWSKI

843.338.1799

vonnies@vmrealestate.com

VM REAL ESTATE | 843.338.1799 | 39 PEARCE RD. BLUFFTON, SC 29910 | VMREALESTATE.COM

The information presented here is deemed to be accurate, but it has not been independently verified. We make no warranty or representation. It is your responsibility to independently confirm accuracy and completeness.

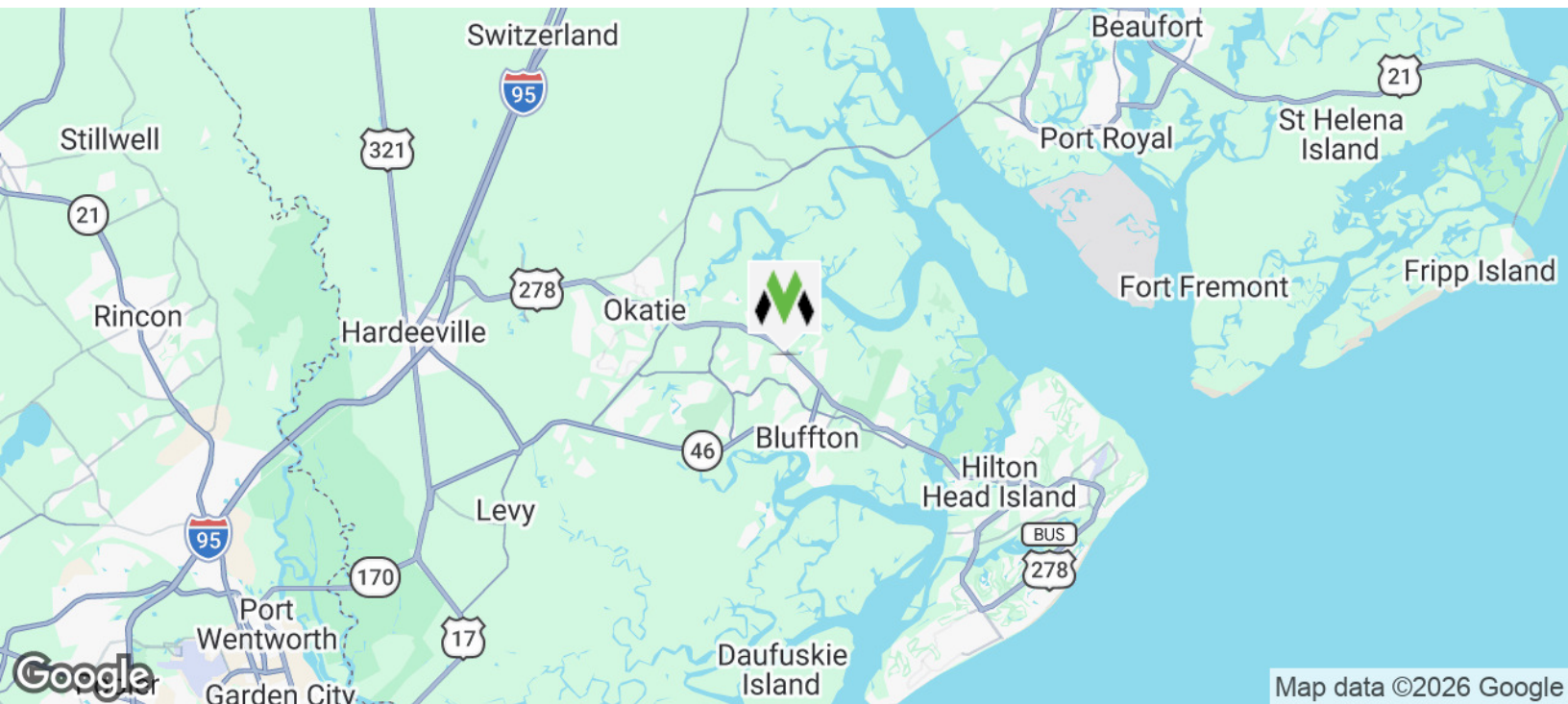
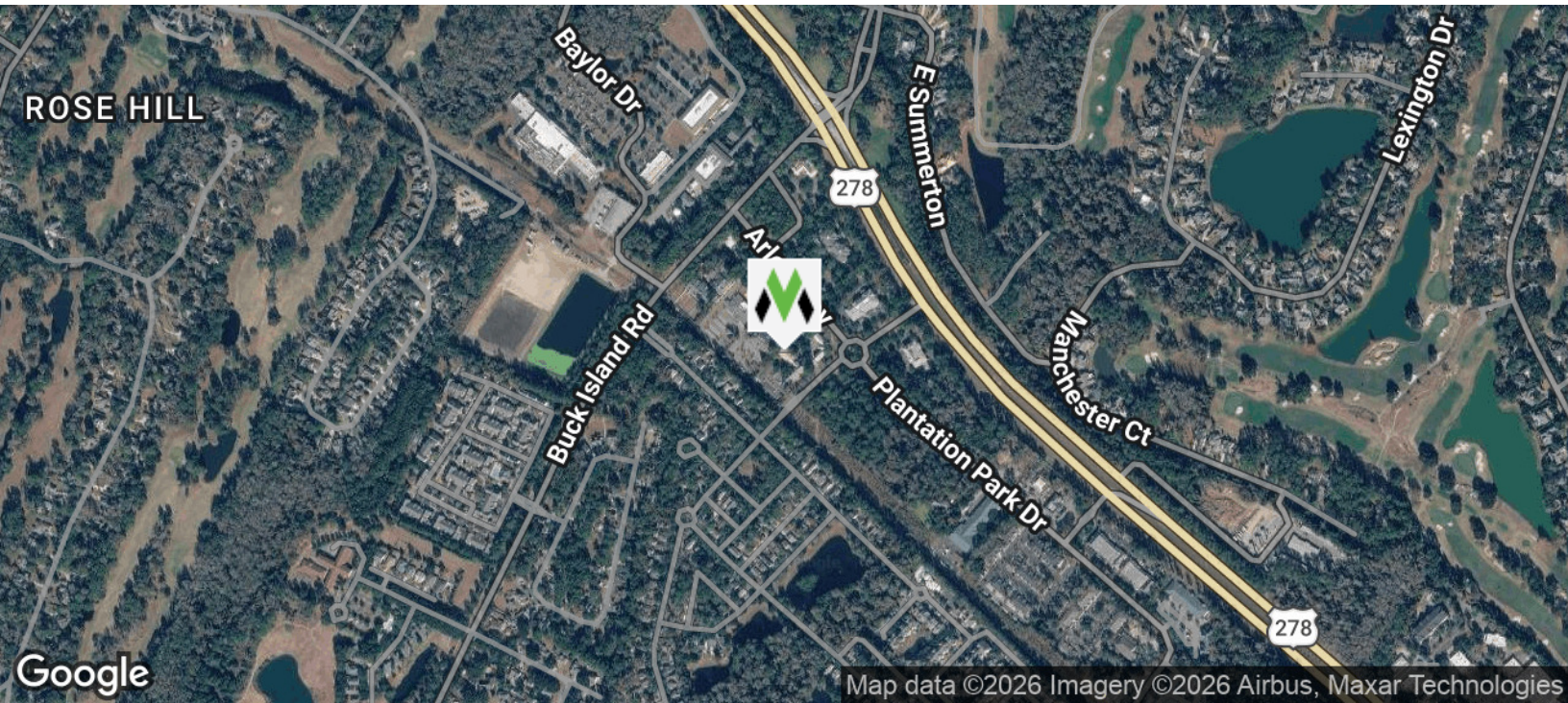


VM | REAL ESTATE

FOR SALE

LOCATION MAPS

14 WESTBURY PARK WAY, SUITE 202 BLUFFTON, SC 29910



VONNIE MAJEWSKI

843.338.1799

vonnie@vmrealestate.com

VM REAL ESTATE | 843.338.1799 | 39 PEARCE RD. BLUFFTON, SC 29910 | VMREALESTATE.COM

The information presented here is deemed to be accurate, but it has not been independently verified. We make no warranty or representation. It is your responsibility to independently confirm accuracy and completeness.

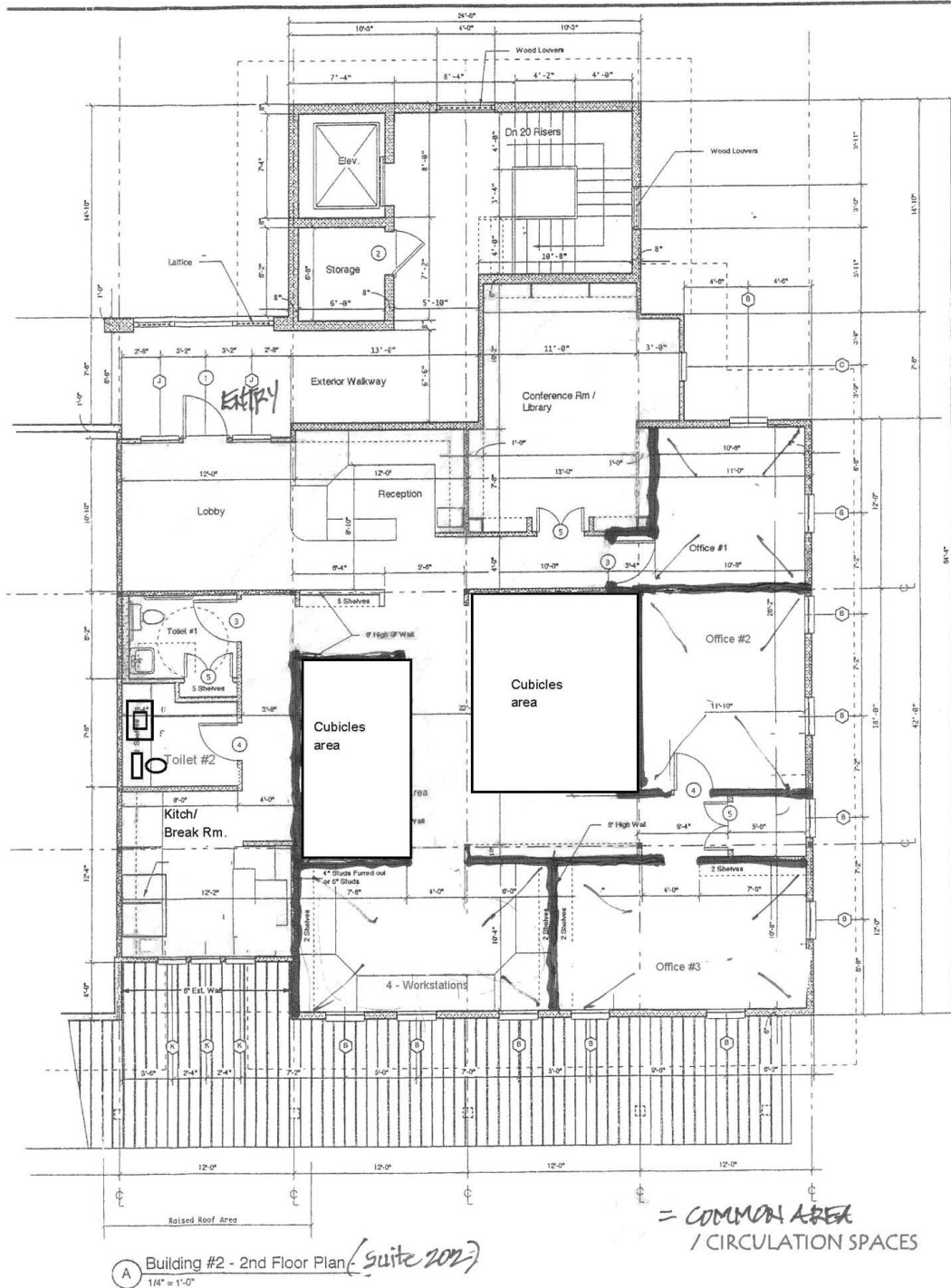


VM | REAL ESTATE

FOR SALE

FLOOR PLAN

14 WESTBURY PARK WAY, SUITE 202 BLUFFTON, SC 29910



VONNIE MAJEWSKI

843.338.1799

vonnies@vmrealestate.com

VM REAL ESTATE | 843.338.1799 | 39 PEARCE RD. BLUFFTON, SC 29910 | VMREALESTATE.COM

The information presented here is deemed to be accurate, but it has not been independently verified. We make no warranty or representation. It is your responsibility to independently confirm accuracy and completeness.



VM | REAL ESTATE

FOR SALE

INTERIOR PICTURES

14 WESTBURY PARK WAY, SUITE 202 BLUFFTON, SC 29910



VONNIE MAJEWSKI

843.338.1799

vonnie@vmrealestate.com

VM REAL ESTATE | 843.338.1799 | 39 PEARCE RD. BLUFFTON, SC 29910 | VMREALESTATE.COM

The information presented here is deemed to be accurate, but it has not been independently verified. We make no warranty or representation. It is your responsibility to independently confirm accuracy and completeness.



VM | REAL ESTATE