

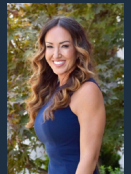
# FOR LEASE



**1235 GLENHAVEN CT** EL DORADO HILLS  
CA 95762

**FLEX OFFICE & WAREHOUSE**  
AVAILABLE 10/1/25

**+/- 2,531 SF** Office 1,181 SF & Warehouse 1,350 SF



Jayna DeSoiza Byrnes | 916.638.3890 | [jayna@kcmre.com](mailto:jayna@kcmre.com)  
CA DRE #01941191

Brian Rabe | 916.601.0578 | [brabe@kcmre.com](mailto:brabe@kcmre.com)  
CA DRE #01743359



# 1235 GLENHAVEN CT

OFFICE FLEX SPACE | FOR LEASE

## PHOTOS & PROPERTY DETAILS



### Property Details & Highlights

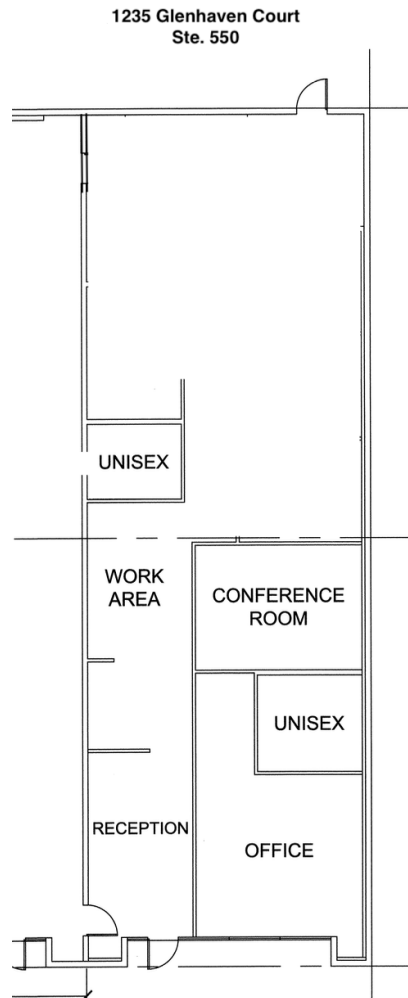
- Two Offices
- Large windows with beautiful views and light
- Front reception desk and waiting area
- Built in drafting tables
- Tile Floors
- High end full bathroom with overhead shower
- Five minutes off Hwy 50
- Located in the El Dorado Hills Business Park
- Roll Up Door 14' x 12'
- Office 1,181 SF and Warehouse 1,350 SF



# 1235 GLENHAVEN CT

OFFICE FLEX SPACE | FOR LEASE

## SUITE PLAN



Asking \$1.15/SF NNN



# 1235 GLENHAVEN CT LOCATION AERIAL

OFFICE FLEX SPACE | FOR LEASE



The information in this document was obtained from sources we deem reliable, however, no warranty or representation, expressed or implied, is made as to the accuracy of the information contained herein.