



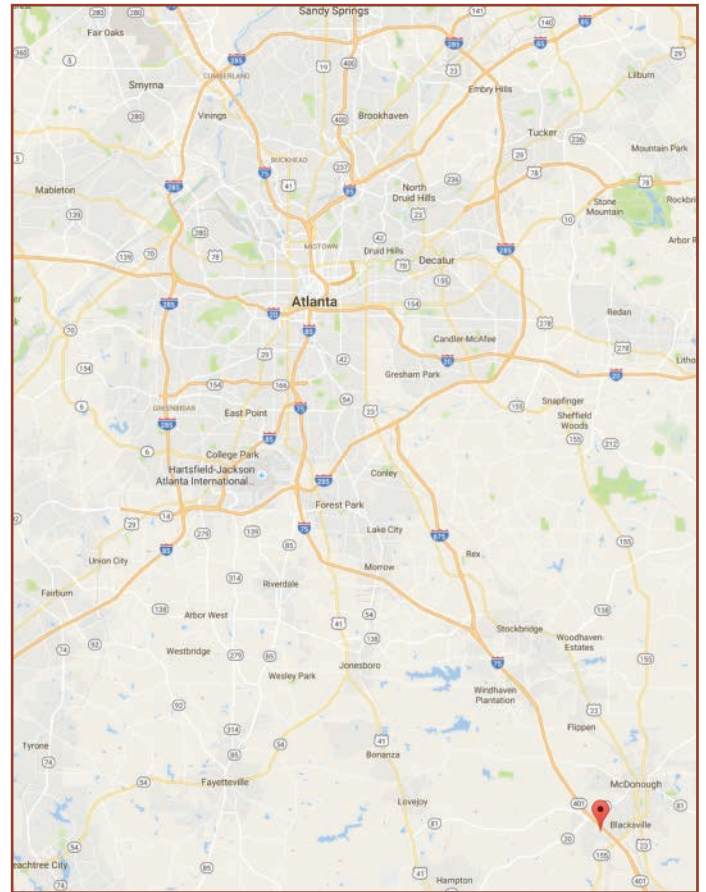
THE
**CHASELAND
GROUP**

Avalon Parkway - Tract #2

North Bay Avalon, LLLP
McDonough, Georgia 30253

Property Highlights

- 4.5 acres (3 lots)
- For purchase
- I-75 signage access, 105,000 ADT
- C-3 zoning
- Potential access to existing detention pond
- Located near South Point Shopping Center in McDonough, the major economic hub of Henry County, Georgia
- Surrounded by affluent neighborhoods, with 51% of the population earning \$50,000 to \$149,999
- Located 25 minutes south of Hartsfield-Jackson Airport
- Positioned along Avalon Parkway next to Nissan of McDonough Dealership, approximately 15,000 ADT



For marketing purposes only.

Contact: Jay Baker at 404-861-1850 or Jay@TheChaselandGroup.com



**THE
CHASELAND
GROUP**

Avalon Parkway - Tract #2
North Bay Avalon, LLLP
McDonough, Georgia 30253

List Price for each lot:

- Lot A-1 (1.39 acres) \$900,000
- Lot A-2 (1.39 acres) \$850,000
- Lot A-3 (1.72 acres) \$1,050,000

Demographics

Three mile radius

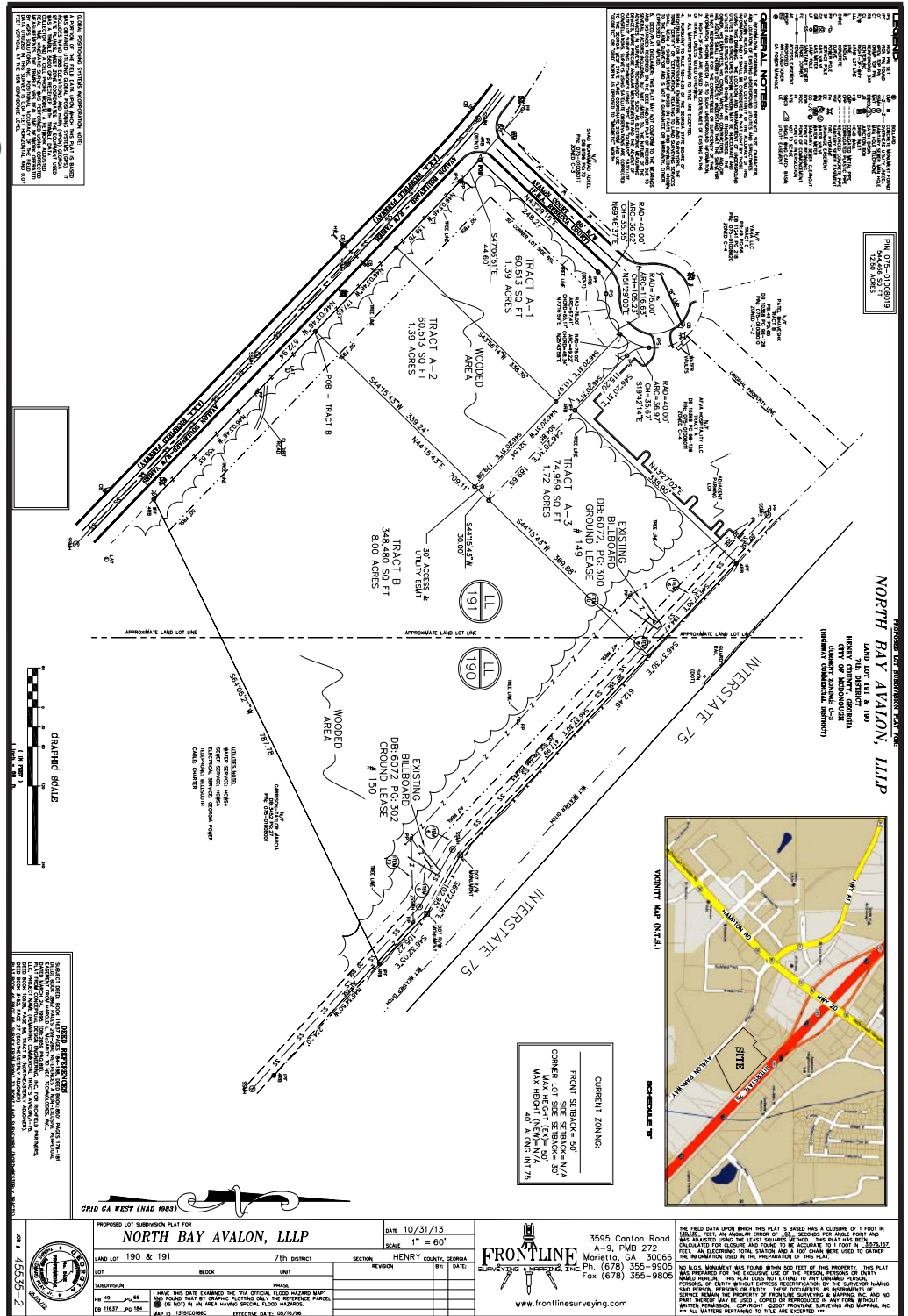
- 2015 Population: 35,414
- 2020 Population: 38,070
- 2015 HH Income: \$55,561

Five mile radius

- 2015 Population: 65,925
- 2020 Population: 70,705
- 2015 HH Income: \$65,591

Seven mile radius

- 2015 Population: 112,956
- 2020 Population: 120,357
- 2015 HH Income: \$68,899



Contact: Jay Baker at 404-861-1850 or Jay@TheChaselandGroup.com