



COMMERCIAL
ASSET GROUP

ADAM FUNK
Managing Director
310.666.0124
afunk@cagre.com
Lic. 02129715



10537 Santa Monica Blvd

Los Angeles, CA 90025

High Visibility Plug & Play Opportunity For Lease in Century City

PROPERTY HIGHLIGHTS

RENTAL RATE NEGOTIABLE

SPACE SIZE **2ND FL:**
SUITE 220: ±1,672 SF
SUITE 230: ±1,633 SF
(COMBINED: ±3,305 SF)
3RD FL: ±7,200 SF
CAN BE DEMISED

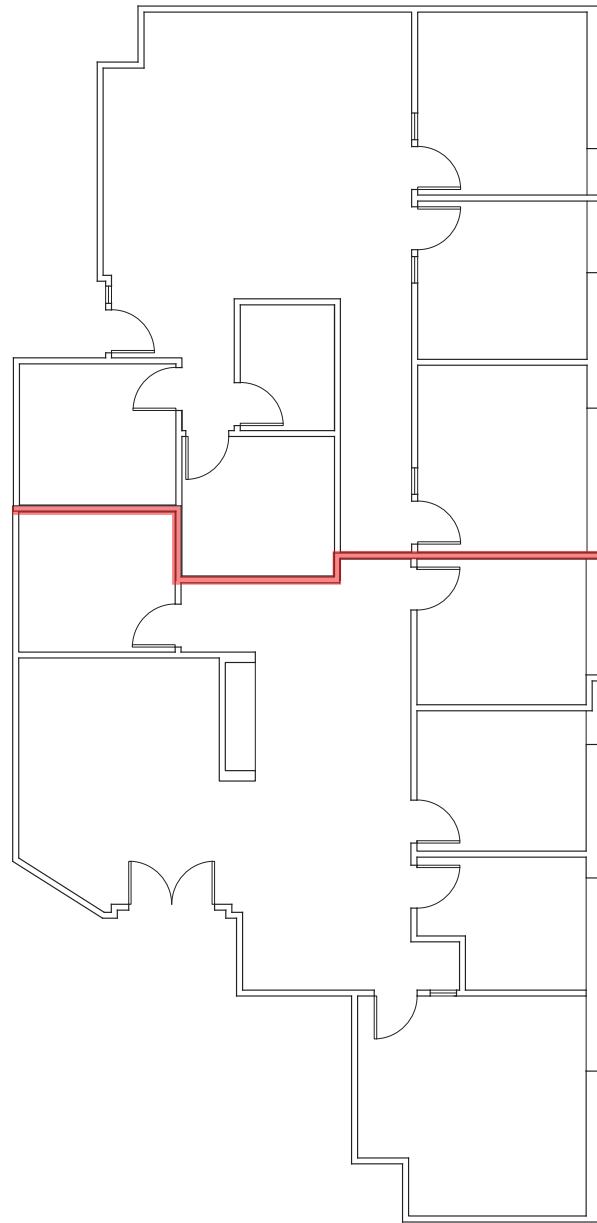
TERM 3 - 5 YEARS

PARKING 2.5/1,000 SF
\$150/SPACE

- Located one block from the Century City Mall, this building is situated just minutes from Beverly Hills, West Hollywood, Brentwood, Santa Monica, and the I-405 & I-10
- Plug & Play Opportunity
- Recently Renovated Lobby
- Secured Building with Key Fab Access
- High Visibility on Santa Monica Boulevard



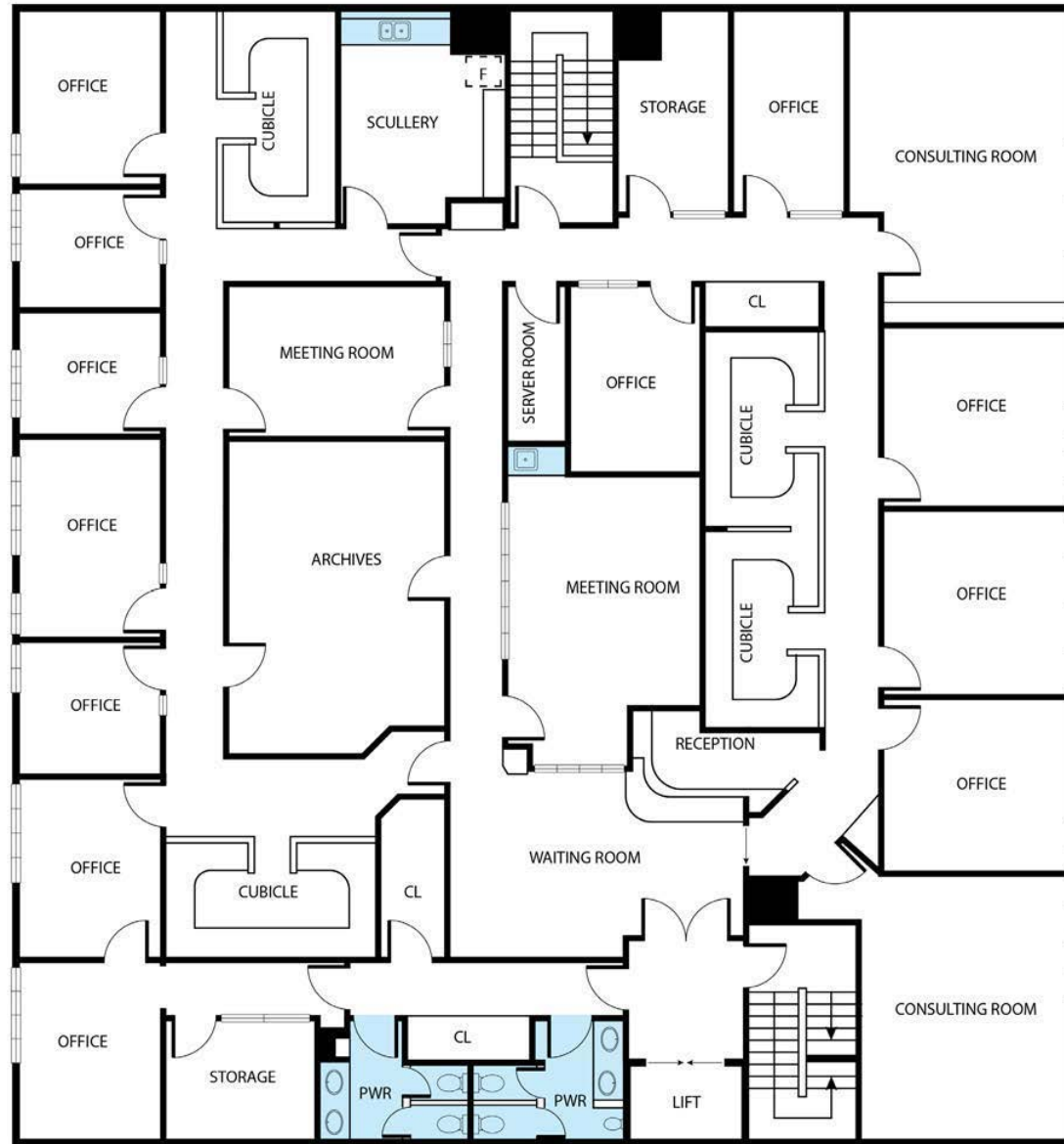
SUITE 220 & 230 FLOOR PLANS: $\pm 3,305$ RSF COMBINED



SUITE 230:
 $\pm 1,633$ RSF

SUITE 220:
 $\pm 1,672$ RSF

THIRD FLOOR PLAN: ±7,200 RSF (CAN BE DEMISED)



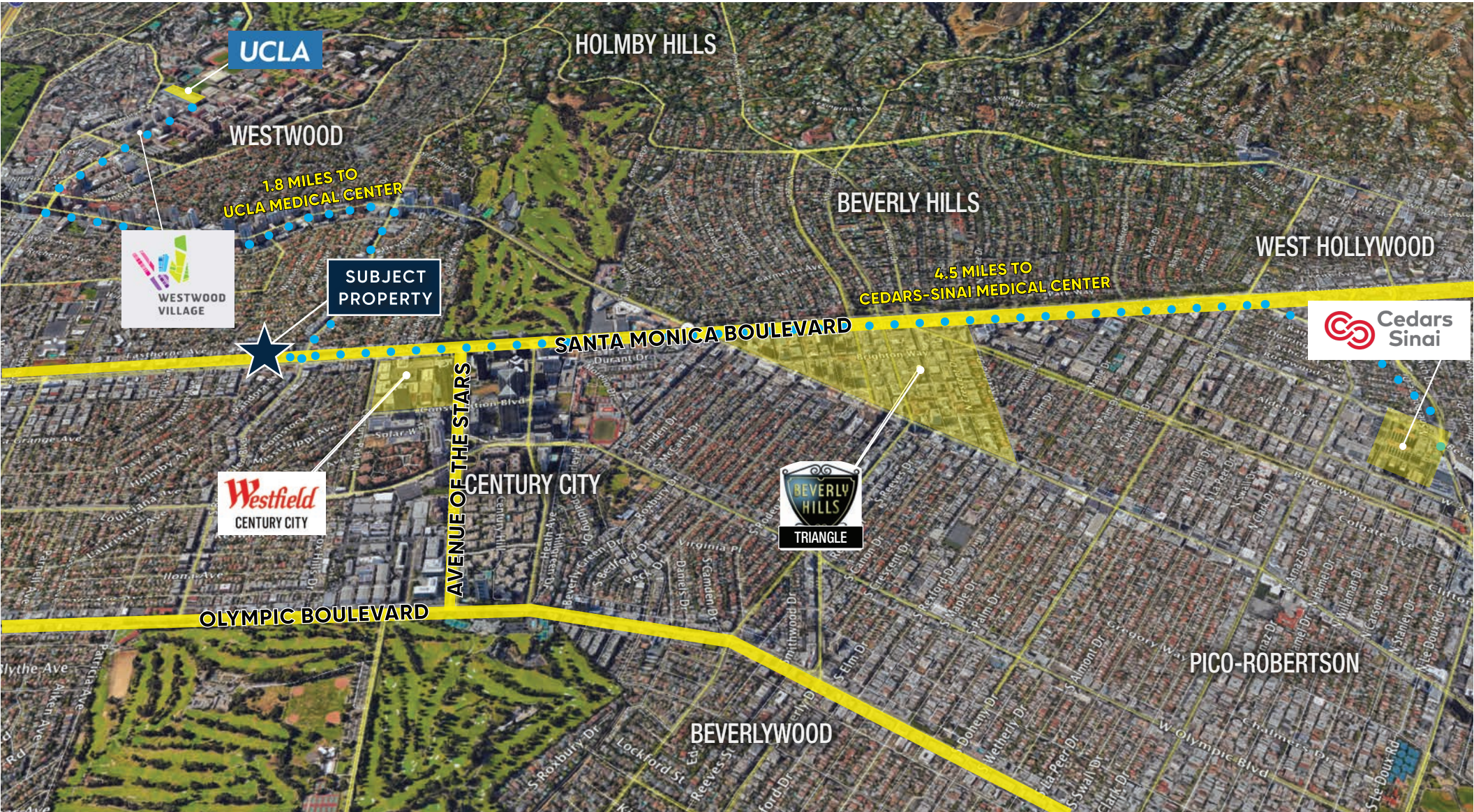
SECOND FLOOR PHOTOS



THIRD FLOOR PHOTOS



AERIAL





GUITARS
RECORDS
& REED

ANTIQUES & COLLECTIBLES

These materials are based on information and content provided by others, which we believe are accurate. No guarantee, warranty or representation is made by Commercial Asset Group, Inc. or its personnel. All interested parties must independently verify accuracy and completeness. As well, any projections, assumptions, opinion, or estimates are used for example only and do not represent the current or future performance of the identified property. Your tax, financial, legal and toxic substance advisors should conduct a careful investigation of the property and its suitability for your needs, including land use limitations. The property is subject to prior lease, sale, change in price, or withdrawal from the market without notice.

Adam Funk
Managing Director
310.666.0124
afunk@cagre.com
Lic. 02129715



**COMMERCIAL
ASSET GROUP**

Commercial Asset Group
190 N. Canon Drive, STE 300
Beverly Hills, CA 90210
P: 310.275.8222 F: 310.275.8223
www.cagre.com Lic. 01876070