

OFFICE SPACE FOR LEASE



# BERKELEY BUSINESS CENTER

30 Martin Street, Cumberland, RI 02864

**GEORGE PASKALIS, SIOR**  
Executive Vice President  
401.751.3200 x3303  
george@mgcommercial.com

**LEEDS MITCHELL IV, SIOR**  
Executive Vice President  
401.751.3200 x3307  
leeds@mgcommercial.com

**MG COMMERCIAL**  
365 Eddy Street, Penthouse Suite  
Providence, RI 02903  
401.751.3200 | mgcommercial.com

# PROPERTY SUMMARY



## PROPERTY DESCRIPTION

272,300 square foot historic multi-level brick mill building, situated on a 5.6 acre site. The main building is a 4 story structure and has been converted to creative corporate office space with only 18,000 square feet remaining available on the second floor. Join growing companies such as Hayward Baker, BioTouch, and Baby Delight, Inc..

## LOCATION DESCRIPTION

The subject property is located 1.5 miles from Exit 10 off I-295 via Mendon Road (Route 122). The property is easily accessible to all of Northern Rhode Island and Southeastern Massachusetts and just 15 minutes to downtown Providence

## PROPERTY HIGHLIGHTS

- 18,000 SF Office Space Available
- On-Site Property Management
- Planned On-Site Brewery
- Ample On-Site Parking
- Brick and Beam Interior
- New Passenger Elevator
- Convenient Highway Access
- Exit 10, I-295, Cumberland 1.5 Miles
- I-295 & Route 146, Lincoln 3.5 Miles
- I-95 & I-295, Attleboro 8.0 Miles
- I-95 & Route 146, Providence 9.0 Miles

## OFFERING SUMMARY

Lease Rate:	\$16.00 SF/yr (MG)
Available SF:	6,000 - 18,000 SF
Building Size:	272,300 SF

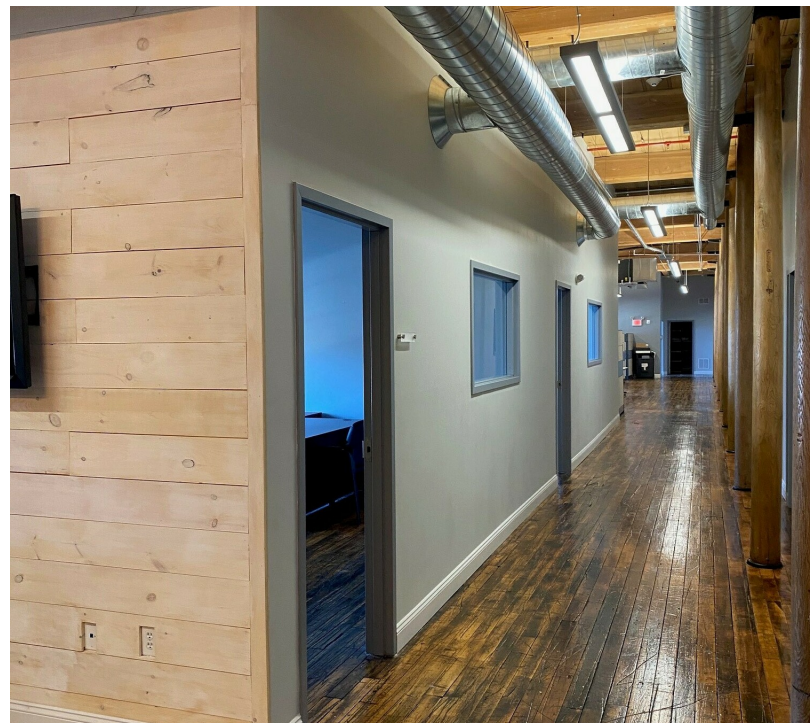
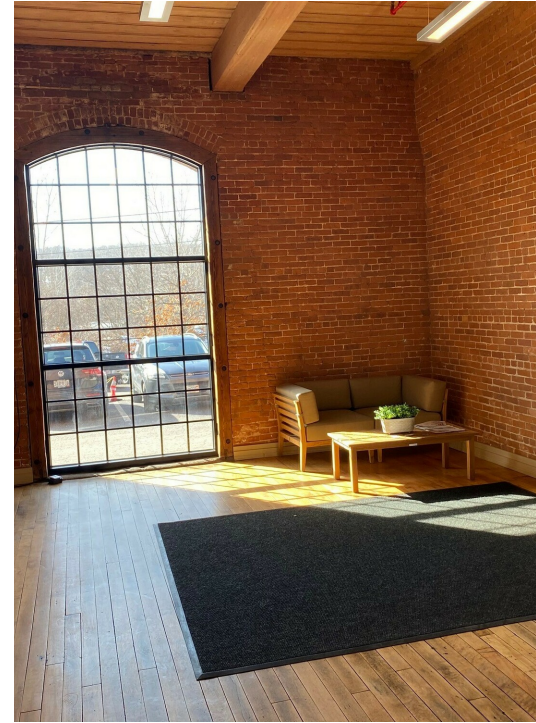
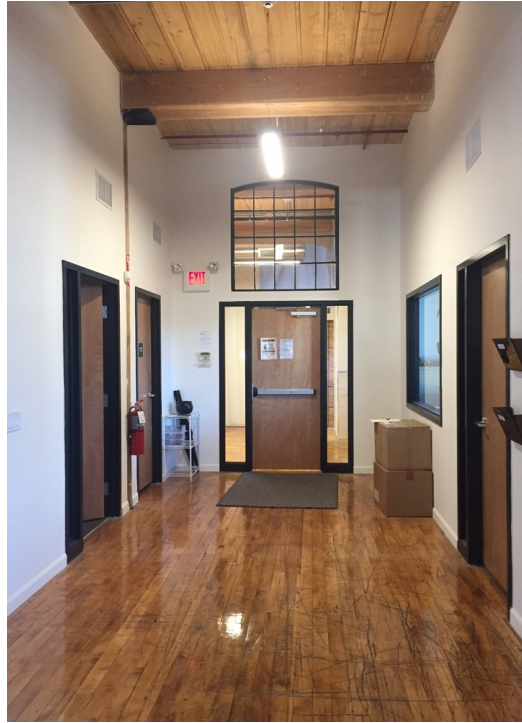
**GEORGE PASKALIS, SIOR**  
Executive Vice President  
401.751.3200 x3303  
george@mgcommercial.com

**LEEDS MITCHELL IV, SIOR**  
Executive Vice President  
401.751.3200 x3307  
leeds@mgcommercial.com

365 Eddy Street, Penthouse Suite  
Providence, RI 02903  
mgcommercial.com



# ADDITIONAL PHOTOS



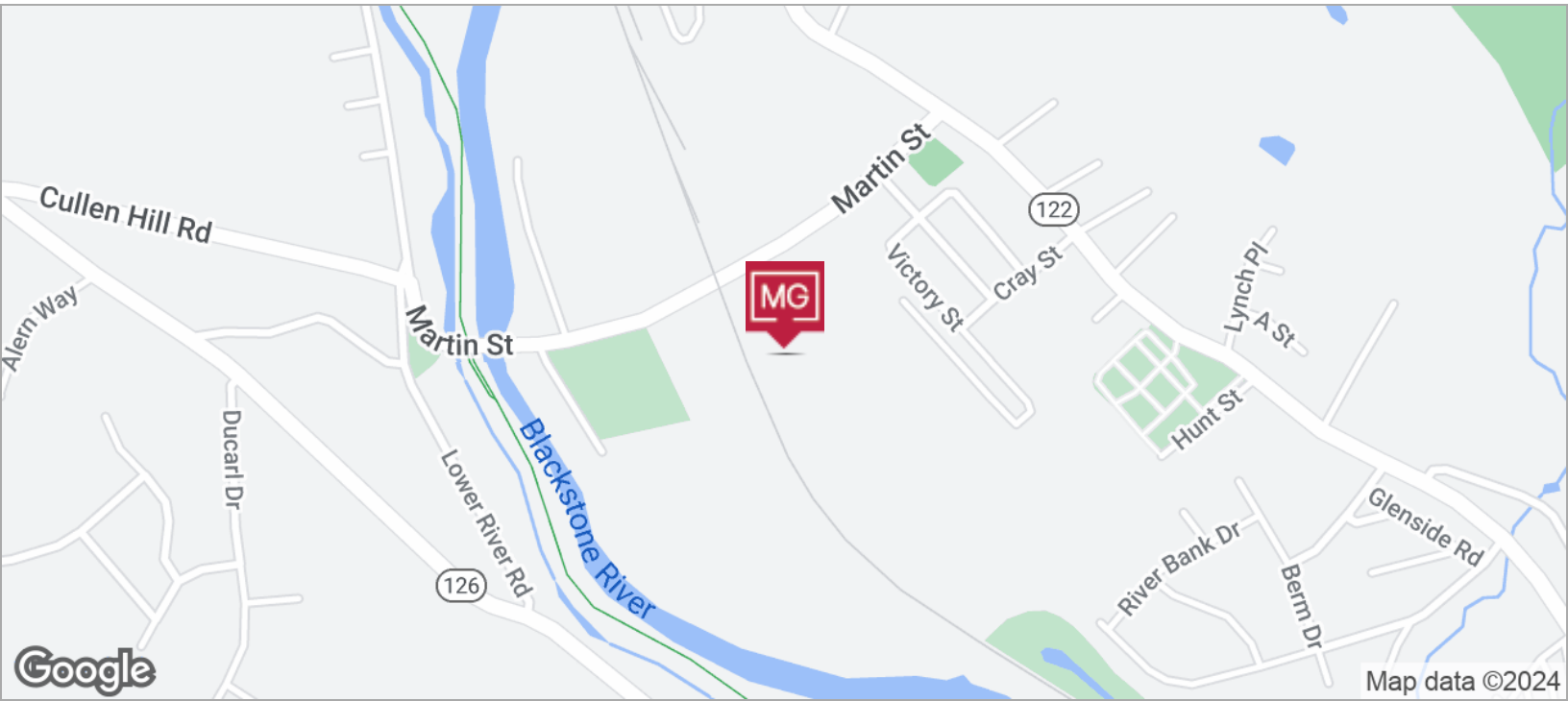
**GEORGE PASKALIS, SIOR**  
Executive Vice President  
401.751.3200 x3303  
george@mgcommercial.com

**LEEDS MITCHELL IV, SIOR**  
Executive Vice President  
401.751.3200 x3307  
leeds@mgcommercial.com

365 Eddy Street, Penthouse Suite  
Providence, RI 02903  
mgcommercial.com



# LOCATION MAPS



**GEORGE PASKALIS, SIOR**  
 Executive Vice President  
 401.751.3200 x3303  
 george@mgcommercial.com

**LEEDS MITCHELL IV, SIOR**  
 Executive Vice President  
 401.751.3200 x3307  
 leeds@mgcommercial.com

365 Eddy Street, Penthouse Suite  
 Providence, RI 02903  
 mgcommercial.com

