

OFFICE PROPERTY FOR LEASE

End-Unit Office Space with Schoolcraft Road Frontage

37463 SCHOOLCRAFT RD
LIVONIA, MI 48150



- › 2,400 sf available for Lease
- › Flexible lease terms
- › Great freeway access
- › Signage Available



P.A. COMMERCIAL
Corporate & Investment Real Estate



OFFERING SUMMARY

Available SF: 2,400 SF

Lease Rate: \$13.95 SF/yr (MG)

Lot Size: 1.25 Acres

Year Built: 1978

Building Size: 12,180 SF

Zoning: M-1, Livonia

PROPERTY OVERVIEW

I-96 service drive signage available. Freeway visibility.

PROPERTY HIGHLIGHTS

- 2,400 sf available for Lease
- Flexible lease terms
- Great freeway access
- Signage Available

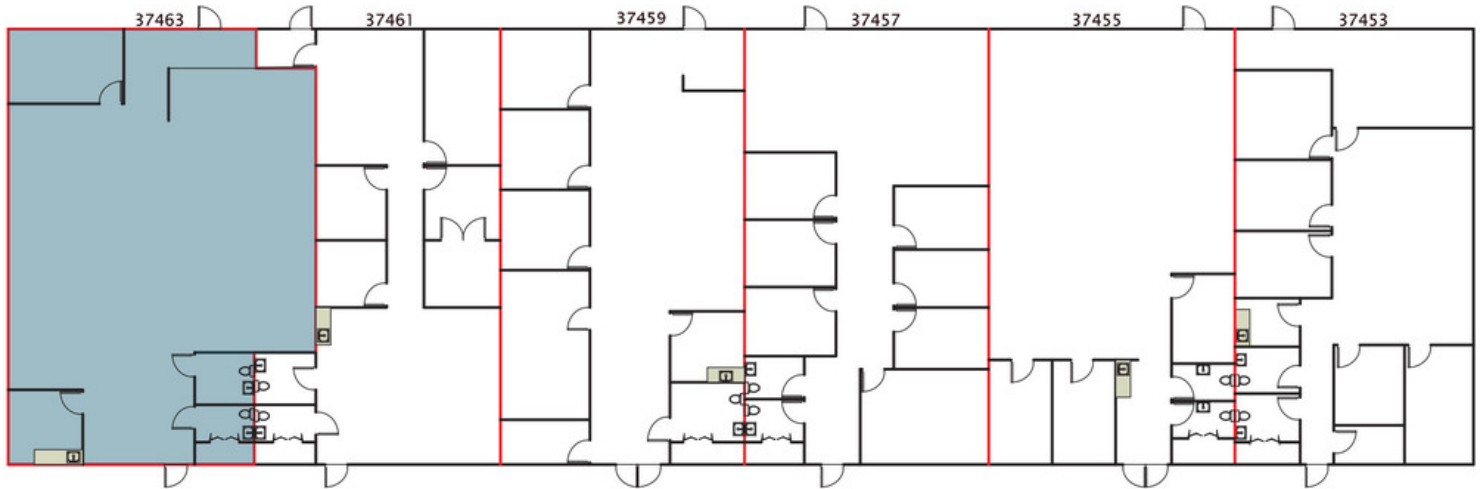
DAVID A. PLUMLEY Managing Member/CFO
dave@pacommercial.com (P) 248.358.0100 (C) 248.281.9901

MATTHEW J. SCHIFFMAN Senior Associate
matt@pacommercial.com (P) 248.281.9907 (C) 248.943.6449



P.A. COMMERCIAL
Corporate & Investment Real Estate

26555 Evergreen Road, Suite 1500 • Southfield, MI 48076



2,400 sf AVAILABLE

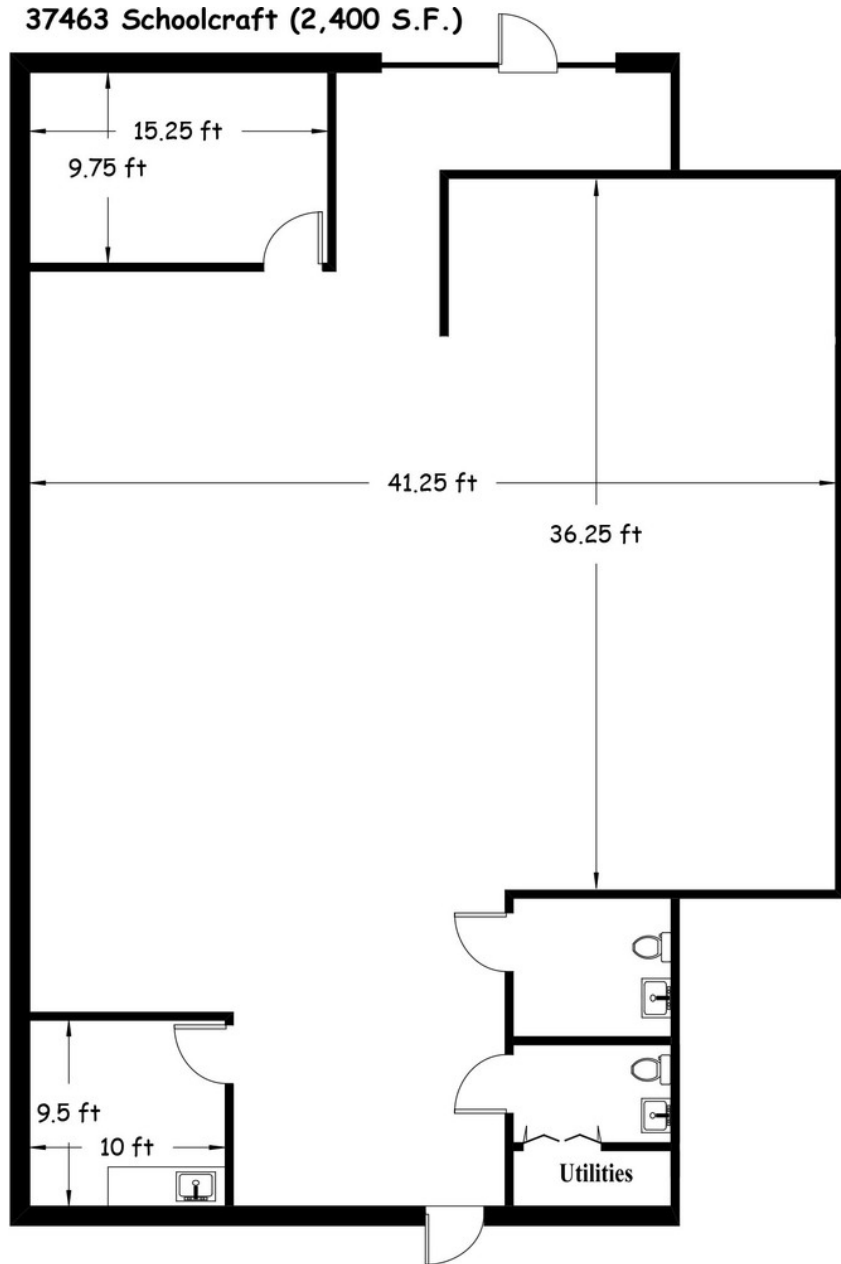
DAVID A. PLUMLEY Managing Member/CFO
dave@pacommercial.com (P) 248.358.0100 (C) 248.281.9901

MATTHEW J. SCHIFFMAN Senior Associate
matt@pacommercial.com (P) 248.281.9907 (C) 248.943.6449



P.A. COMMERCIAL
Corporate & Investment Real Estate

26555 Evergreen Road, Suite 1500 • Southfield, MI 48076



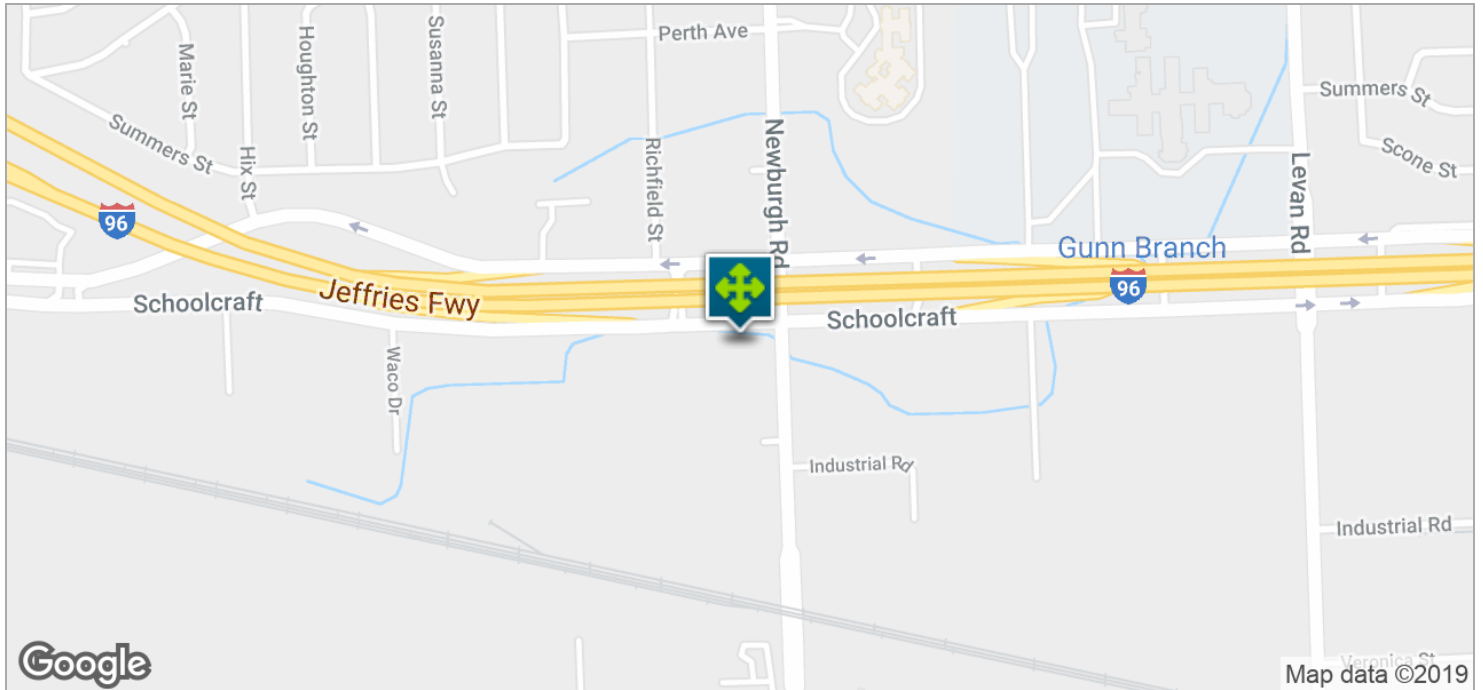
DAVID A. PLUMLEY Managing Member/CFO
dave@pacommercial.com (P) 248.358.0100 (C) 248.281.9901

MATTHEW J. SCHIFFMAN Senior Associate
matt@pacommercial.com (P) 248.281.9907 (C) 248.943.6449



P.A. COMMERCIAL
Corporate & Investment Real Estate

26555 Evergreen Road, Suite 1500 • Southfield, MI 48076

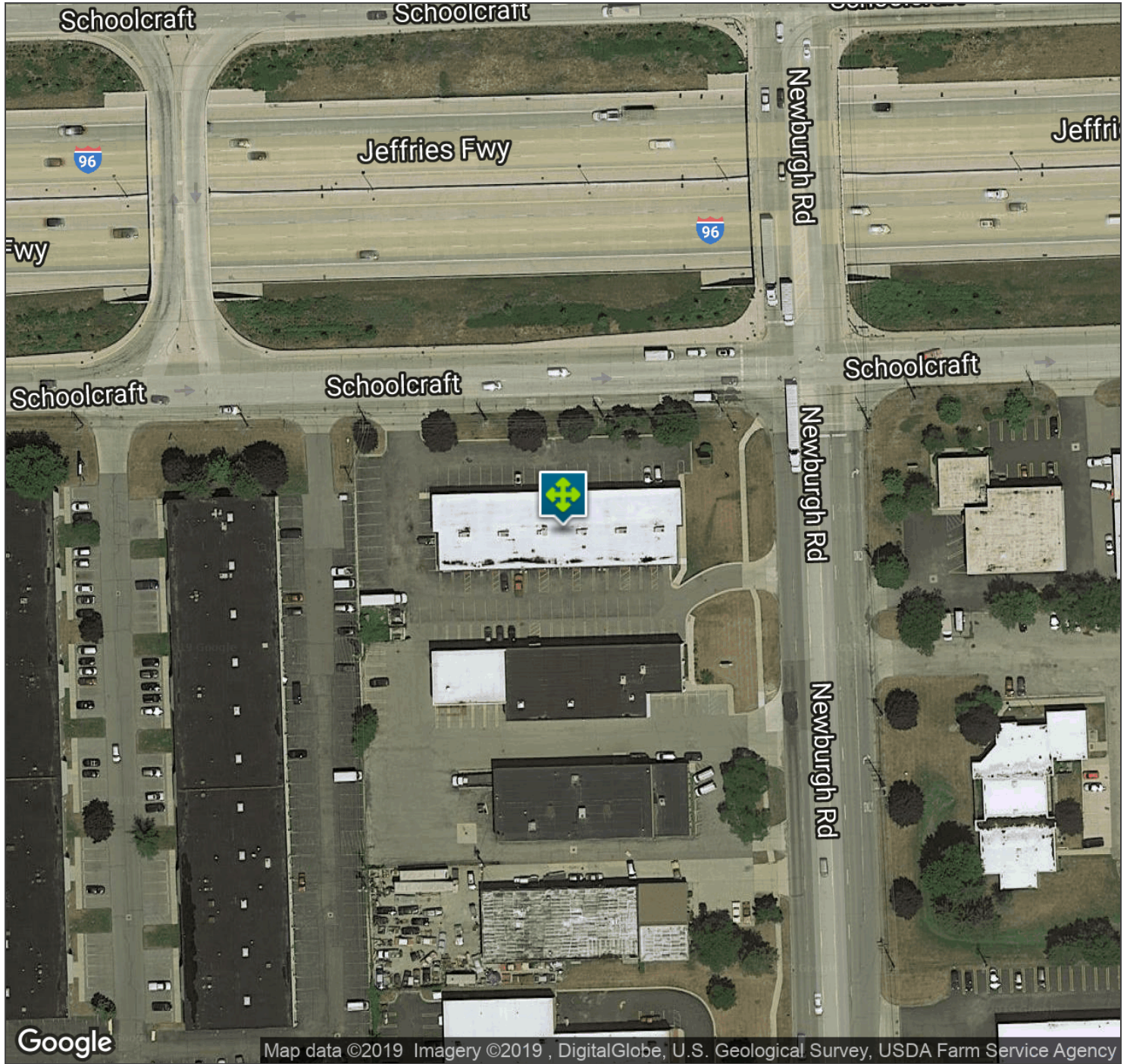


DAVID A. PLUMLEY Managing Member/CFO
dave@pacommercial.com (P) 248.358.0100 (C) 248.281.9901

MATTHEW J. SCHIFFMAN Senior Associate
matt@pacommercial.com (P) 248.281.9907 (C) 248.943.6449



26555 Evergreen Road, Suite 1500 • Southfield, MI 48076



DAVID A. PLUMLEY Managing Member/CFO
dave@pacommercial.com (P) 248.358.0100 (C) 248.281.9901

MATTHEW J. SCHIFFMAN Senior Associate
matt@pacommercial.com (P) 248.281.9907 (C) 248.943.6449

 **P.A. COMMERCIAL**
Corporate & Investment Real Estate

26555 Evergreen Road, Suite 1500 • Southfield, MI 48076