



909 E ROLLING HILLS STE B - FAYETTEVILLE, AR

OFFERING SUMMARY

| | |
|---------------|------------------|
| Lease Rate: | \$19 SF/yr (NNN) |
| Available SF: | 2,203 SF |
| Lease Type: | NNN |

PROPERTY HIGHLIGHTS

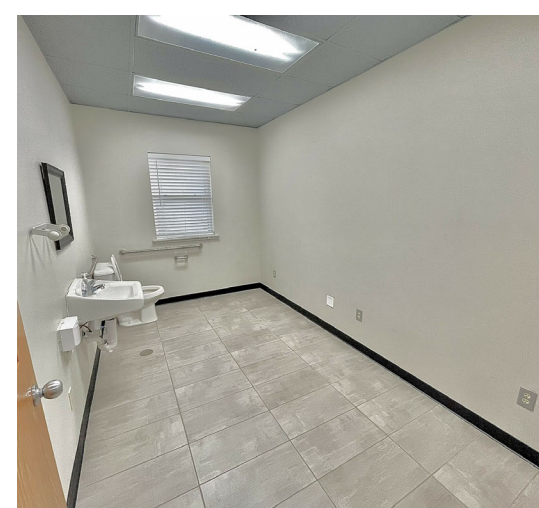
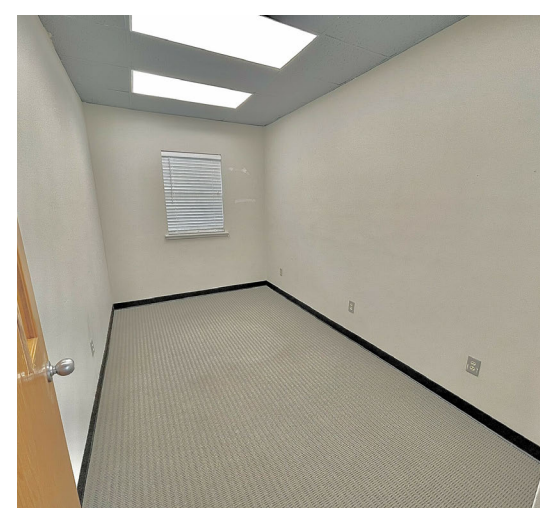
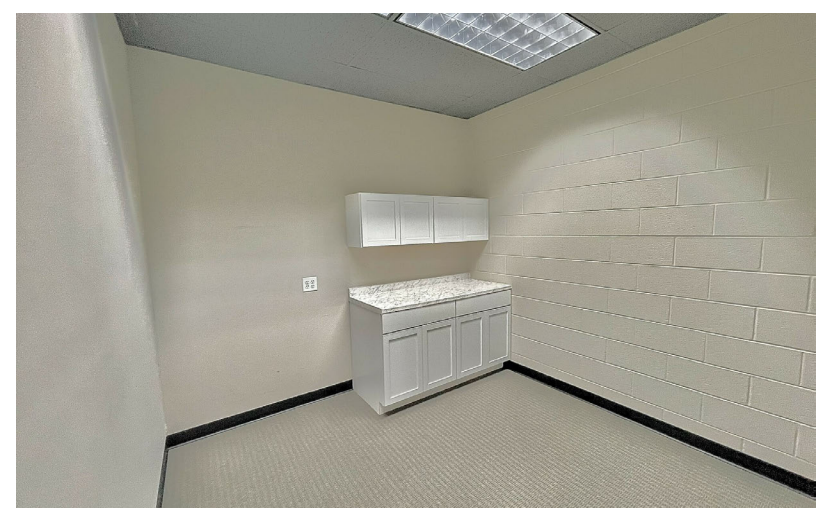
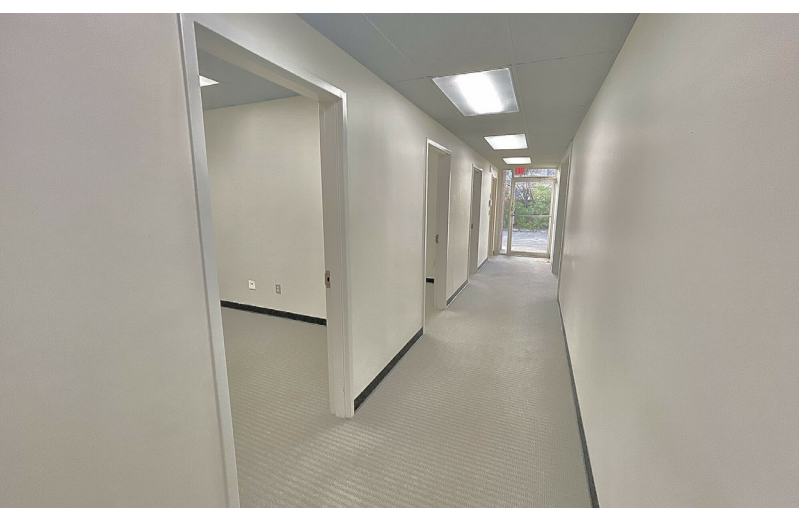
- 6 private offices
- Collaborative work space
- 2 restrooms
- Close proximity to many established businesses
- 32,000 CPD on N College Ave & 11,000 CPD on E Rolling Hills
- Minimum Term: 3 years

PROPERTY OVERVIEW

This 2,203 sq. ft. professional office suite offers a functional and well-designed layout ideal for a wide range of business operations. The space includes six private offices, two restrooms, a spacious great room perfect for collaborative work or team gatherings, and a dedicated break room for staff comfort. Located in a convenient and desirable area, Suite B provides an efficient blend of privacy, workspace versatility, and accessibility—ready to accommodate your growing business.

STEVE FINEBERG
(479)271-4161
steve@arkrealestate.com





STEVE FINEBERG
(479)271-4161
steve@arkrealestate.com





FINEBERG & ASSOCIATES

COMMERCIAL REAL ESTATE

104 S Main Street Bentonville, AR 72712

ARKREALSTATE.COM



I-49

NWA MALL

909 E ROLLING HILLS DR,
FAYETTEVILLE, AR 72703



FAYETTEVILLE SQUARE

UNIVERSITY OF ARKANSAS

718/N COLLEGE AVE

909 E ROLLING HILLS DR,
FAYETTEVILLE, AR 72703

STEVE FINEBERG
(479)271-4161
steve@arkrealestate.com



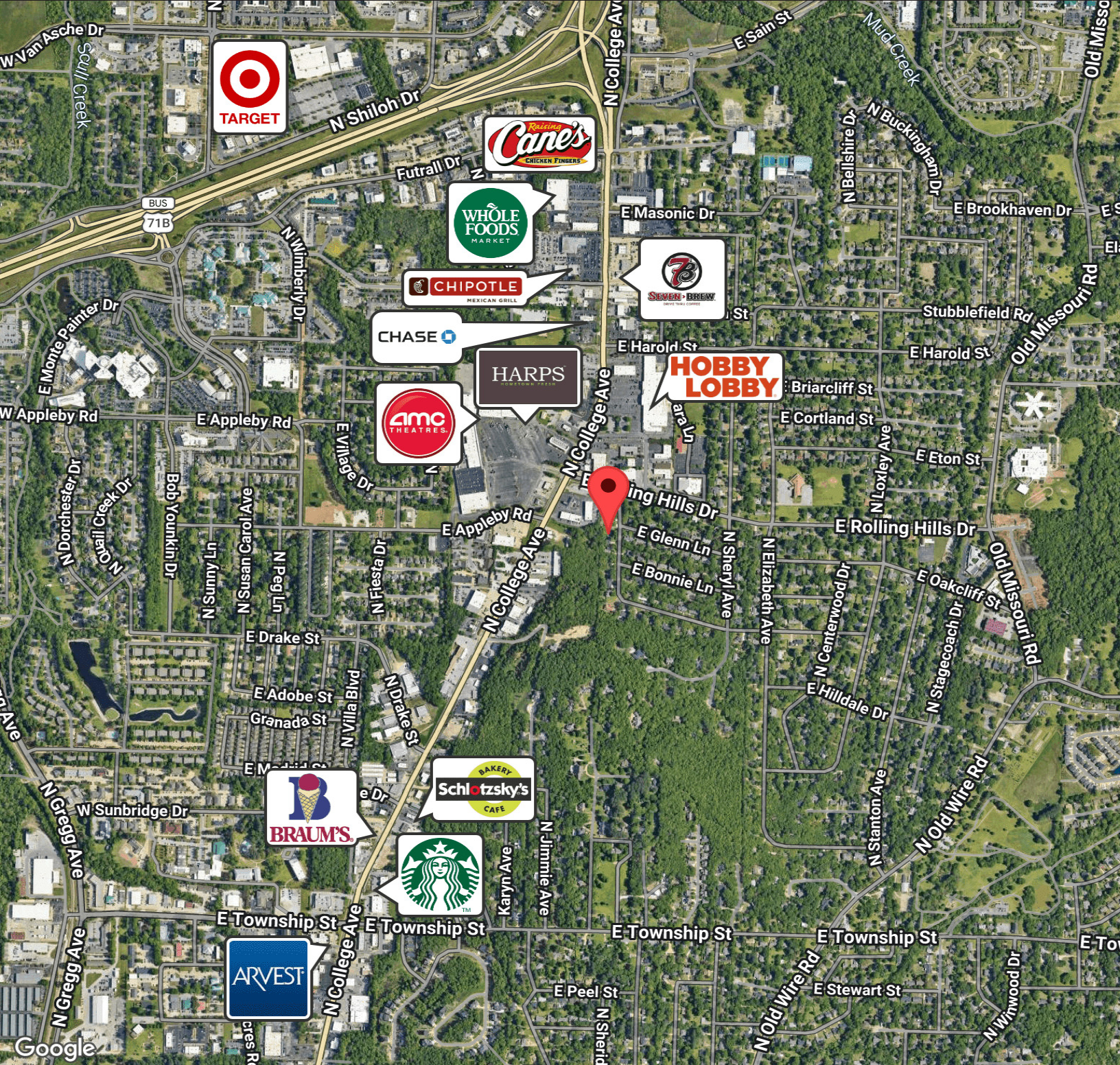


FINEBERG & ASSOCIATES

COMMERCIAL REAL ESTATE

104 S Main Street Bentonville, AR 72712

ARKREALSTATE.COM



STEVE FINEBERG
(479)271-4161
steve@arkrealestate.com

