



Chase Tower

201 East Main Street

Lexington, Kentucky 40507

Property Highlights

- Located on East Main Street in Lexington's CBD
- +/-239,213 RSF, 14-story office building
- On-site 24/7 security
- Fully automated parking garage with skywalk to adjacent 404 space parking structure
- New, full-service catering & event venue on the top floor
- Fiber optic cable access

Spaces

Suite 320

Negotiable

1,588 SF

Suite 360

Negotiable

2,352 SF

Suite 401

Negotiable

9,483 SF

Suite 700

Negotiable

1,299 SF

12th Floor

Negotiable

12,738 SF

Suite 1400

Negotiable

4,288 SF

For More Information

Paul Ray Smith, Jr

Executive Vice President

O: 859 422 4401

prsmith@naiisaac.com | KY #183529

J.L. Cannady, CCIM

Vice President

O: 859 422 4410

jlcanady@naiisaac.com | KY #218275

Building Size	239,213 SF
Available SF	1,299 - 12,738 RSF
Building Class	A
Parking Spaces	404
Zoning	B-2, Downtown Business

NAI Isaac is pleased to present leasing opportunities at Chase Tower. Chase Tower, located in Lexington's CBD, offers a full range of opportunities for locating your office. Chase Tower office space is ideally suited for professional and business firms, high-tech companies, accounting firms, law firms, engineering firms and government agencies from the state to the local level.

Chase Tower benefits from its high visibility and convenient location within the Lexington CBD. Main and Vine Streets represent the governmental and commercial core of downtown Lexington and a large number of professional tenants. Amenities of Chase Tower include an attached 404 car garage and on-site security. Chase Tower is located one block from the Circuit and District Courthouses.

McBRAYER | **CHASE**

Cetera | INVESTORS | **infineon** | **J.P.Morgan** Private Bank

AMR MANAGEMENT SERVICES | **Tactical-IT Group**
Turning vision into action

ANGELA EVANS, Fayette County Attorney | **MASTER COMMISSIONER FAYETTE CIRCUIT COURT**

HISA HORSE RACING INTEGRITY AND SAFETY AUTHORITY

vaco Free Yourself | **Morgan Akins & Jackson** ATTORNEYS AT LAW | **VFA** PUBLIC UTILITY REGULATORY

The Mane ONYX | **dupree** catering + events | **Becker Law Office** Attorneys at Law

Charles A. Grundy, Jr., Attorney at Law | **Crandall & Pera Law, LLC**
Whitley Law Office | **Robert Stith, Attorney at Law**
Lisa L. Johnson, Attorney at Law | **Bryan West, Attorney at Law**
Ann D'Ambrouso, Attorney at Law | **Mattmiller Crosbie, PLLC**

EMWN LAW

NAI Isaac Commercial Properties | **In-Rel PROPERTIES**



Commercial Real Estate Services, Worldwide.

For Lease

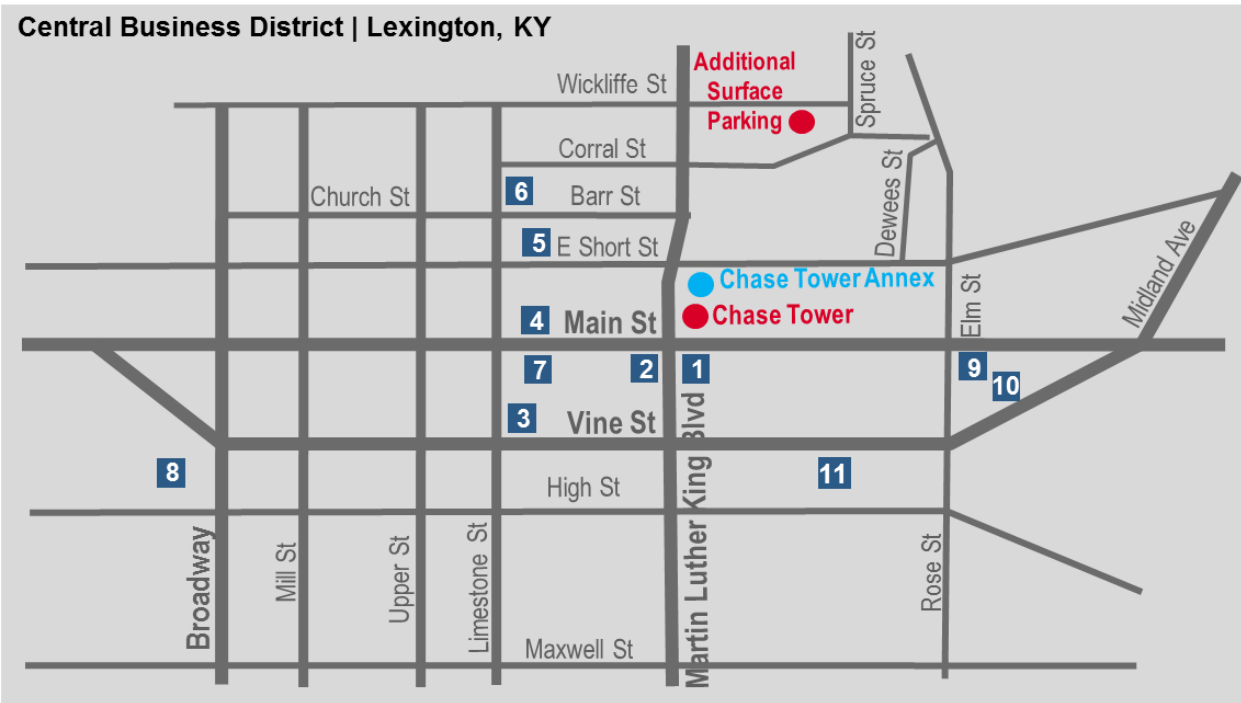
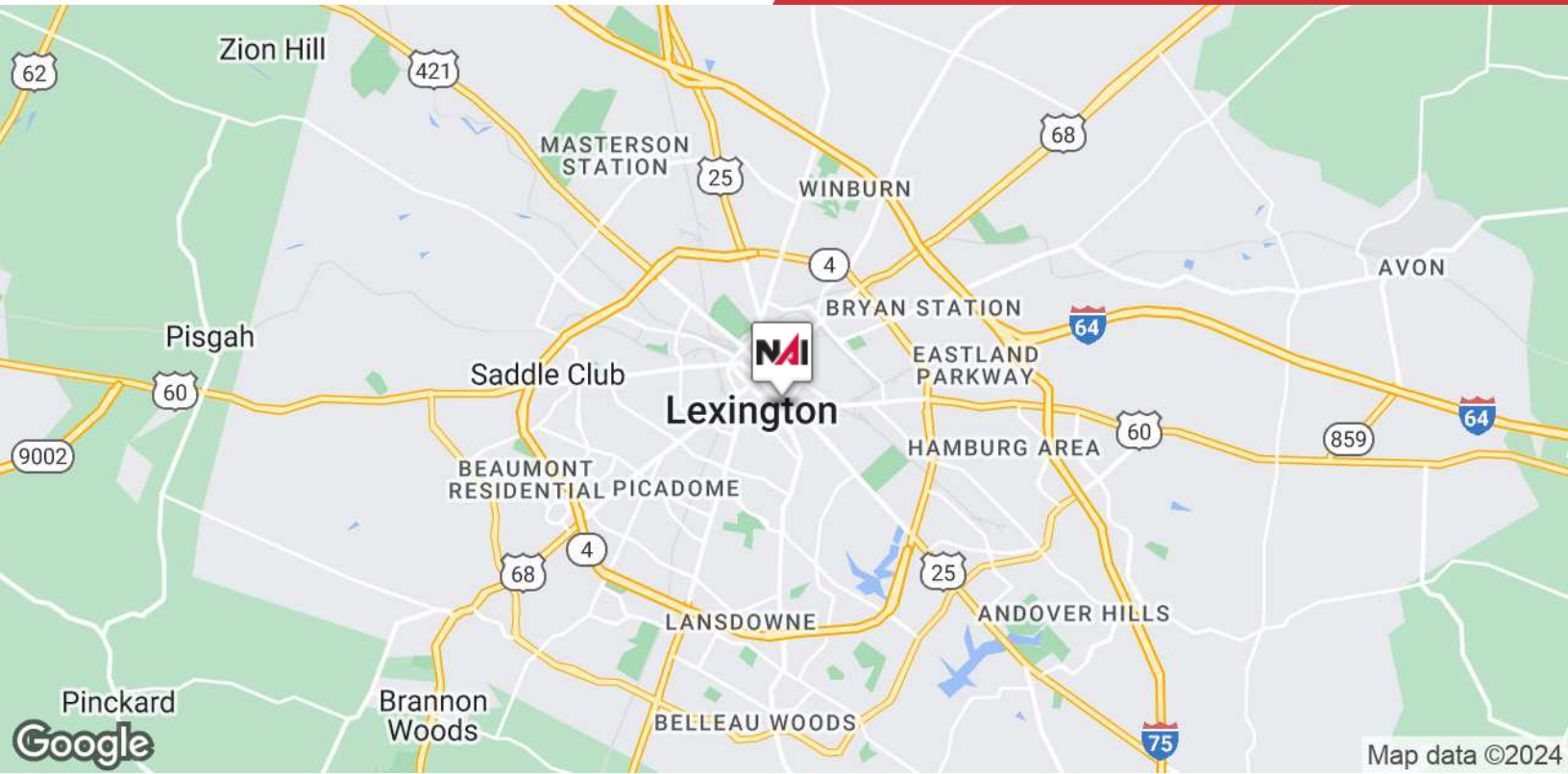
1,299 - 12,738 SF | negotiable

Office Space



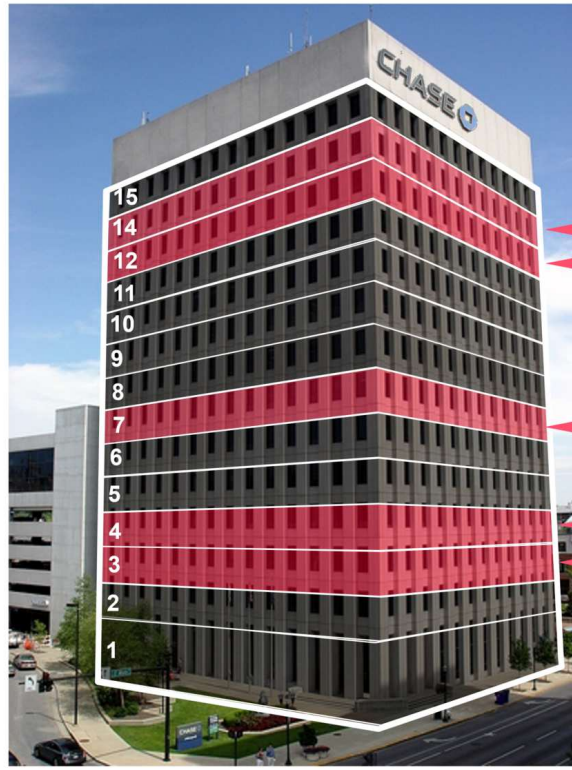
NO WARRANTY OR REPRESENTATION, EXPRESS OR IMPLIED, IS MADE AS TO THE ACCURACY OF THE INFORMATION CONTAINED HEREIN, AND THE SAME IS SUBMITTED SUBJECT TO ERRORS, OMISSIONS, CHANGE OF PRICE, RENTAL OR OTHER CONDITIONS, PRIOR SALE, LEASE OR FINANCING, OR WITHDRAWAL WITHOUT NOTICE, AND OF ANY SPECIAL LISTING CONDITIONS IMPOSED BY OUR PRINCIPALS NO WARRANTIES OR REPRESENTATIONS ARE MADE AS TO THE CONDITION OF THE PROPERTY OR ANY HAZARDS CONTAINED THEREIN ARE ANY TO BE IMPLIED.

771 Corporate Drive, Suite 500
Lexington, KY 40503
859 224 2000 tel
naiisaac.com



Map Key

- 1 LFUCG Government Center
- 2 Fayette County Clerk
- 3 Planning/Zoning Office
- 4 Fayette Circuit Courthouse
- 5 Fayette District Courthouse
- 6 US Federal Courthouse
- 7 Public Library
- 8 Convention Center
- 9 Chamber of Commerce
- 10 Visitors Bureau
- 11 Transit Center Parking



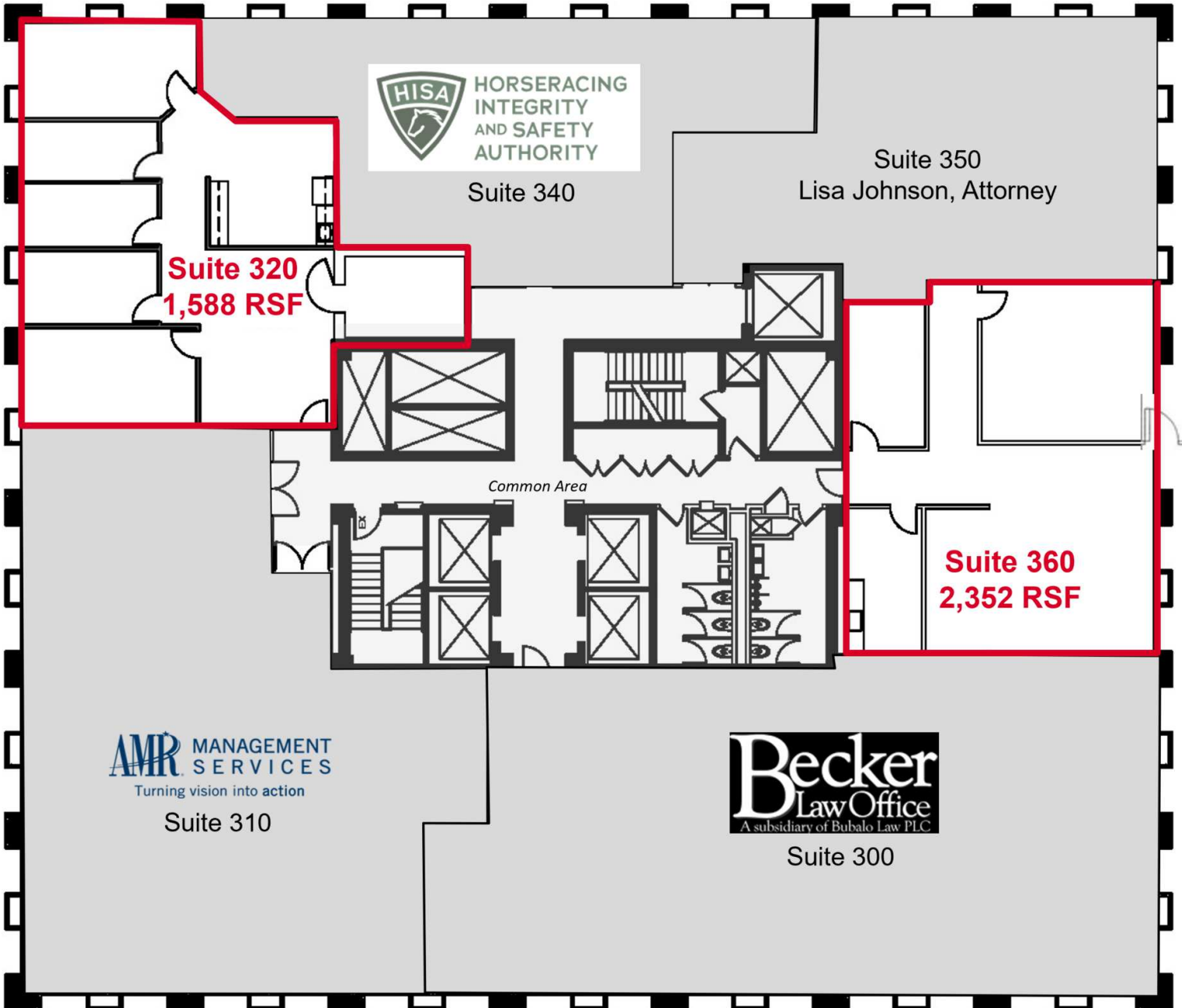
- 14th Floor: 4,288 rsf
- 12th Floor: 12,738 rsf
- 7th Floor: 1,299 rsf
- 4th Floor: 9,483 rsf
- 3rd Floor: 1,588 – 2,352 rsf

Lease Information

Lease Type:	Full Service	Lease Term:	Negotiable
Total Space:	1,299 - 12,738 SF	Lease Rate:	Negotiable

Available Spaces

Suite	Size (SF)	Lease Type	Lease Rate	Description
Suite 320	1,588 SF	Full Service	Negotiable	-
Suite 360	2,352 SF	Full Service	Negotiable	-
Suite 401	9,483 SF	Full Service	Negotiable	May divide
Suite 700	1,299 SF	Full Service	Negotiable	-
12th Floor	12,738 SF	Full Service	Negotiable	May divide
Suite 1400	4,288 SF	Full Service	Negotiable	-





Cathy Burgess Interiors

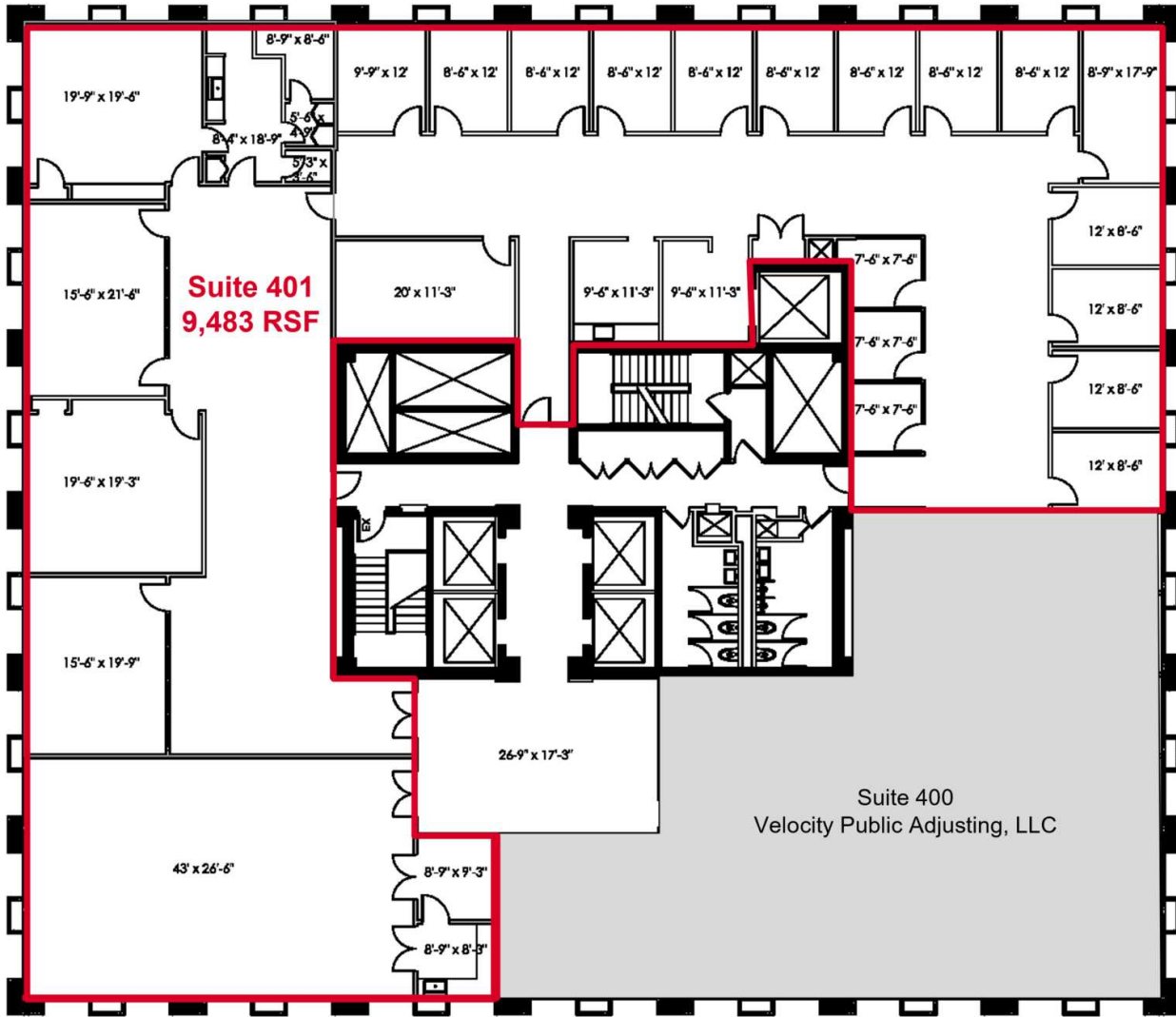
100 New Market Street, 12 Lexington, Kentucky 40502
858.220.9000 | 858.220.9007

**CHASE TOWER
4TH FLOOR
LEXINGTON, KENTUCKY**

DATE	11.22.22
DATE	N.A.
DATE	N.A.
DATE	N.A.

FLOOR PLAN

A-1

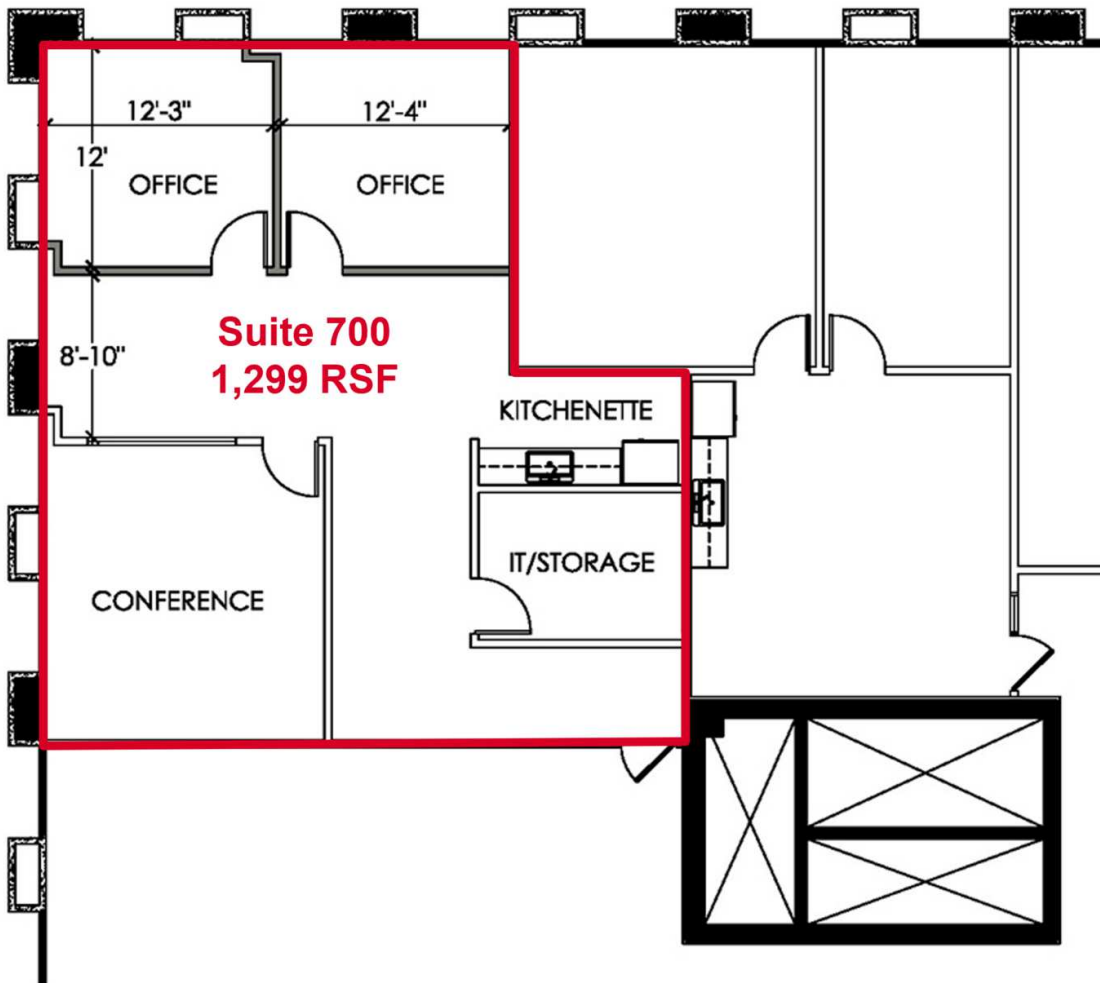


OVERALL ROOM DIMENSIONS ARE INTENDED TO REPRESENT GENERAL ROOM SIZES AND NOT FINISH DIMENSIONS. ALL EXISTING CONDITIONS SHALL BE FIELD VERIFIED PRIOR TO CONSTRUCTION.

FILE: FCBB/LOD/Plan

NO WARRANTY OR REPRESENTATION, EXPRESS OR IMPLIED, IS MADE AS TO THE ACCURACY OF THE INFORMATION CONTAINED HEREIN, AND THE SAME IS SUBMITTED SUBJECT TO ERRORS, OMISSIONS, CHANGE OF PRICE, RENTAL OR OTHER CONDITIONS, PRIOR SALE, LEASE OR FINANCING, OR WITHDRAWAL WITHOUT NOTICE, AND OF ANY SPECIAL LISTING CONDITIONS IMPOSED BY OUR PRINCIPALS NO WARRANTIES OR REPRESENTATIONS ARE MADE AS TO THE CONDITION OF THE PROPERTY OR ANY HAZARDS CONTAINED THEREIN ARE ANY TO BE IMPLIED.

771 Corporate Drive, Suite 500
Lexington, KY 40503
859 224 2000 tel
naiisaac.com



File: FLOOR PLAN

OVERALL ROOM DIMENSIONS ARE INTENDED TO REPRESENT GENERAL ROOM SIZES AND NOT FRAMING DIMENSIONS. ALL EXISTING CONDITIONS SHALL BE FIELD VERIFIED PRIOR TO CONSTRUCTION.



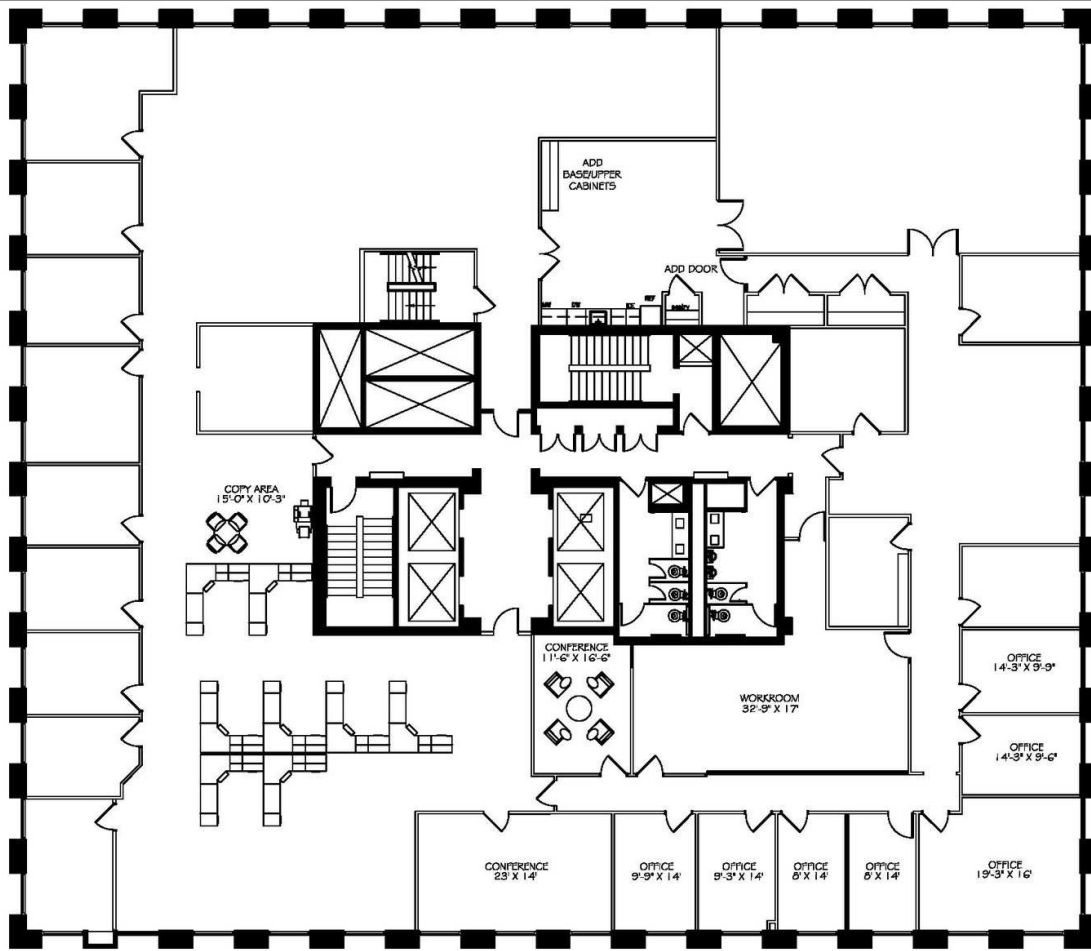
Cathy Burgess Interiors
100 New Park Street, Suite 102, Lexington, Kentucky 40502
606.259.9000 | 606.259.2607

**SUITE 700
SEVENTH FLOOR
CHASE TOWER
LEXINGTON, KENTUCKY**

DATE	01/26/20
SCALE	1/8" = 1'-0"
DRAWN BY	ML
REVISION	

PROPOSED AREA

A-1



Cathy Burgess Interiors
 197 Oakdale Street, Suite 102 | Lexington, Kentucky 40507
 859.224.2000 | 859.224.2027
 800.771.8888 (toll free) | Lexington, Kentucky 40511
 ©2018 CBBI

TWELFTH FLOOR
CHASE TOWER

DATE	06.01.16
SCALE	NOT
DRAWN BY	SK
DESIGNED BY	08.30.16
	10.28.16
	11.03.16
	03.24.17

PROPOSED PLAN

A-1

OVERALL ROOM DIMENSIONS ARE INTENDED TO REPRESENT GENERAL ROOM SIZES AND NOT FRAMING DIMENSIONS. ALL EXISTING CONDITIONS SHALL BE FIELD VERIFIED PRIOR TO CONSTRUCTION.



For Lease

1,299 - 12,738 SF | negotiable

Suite 1400 - 4,288 RSF



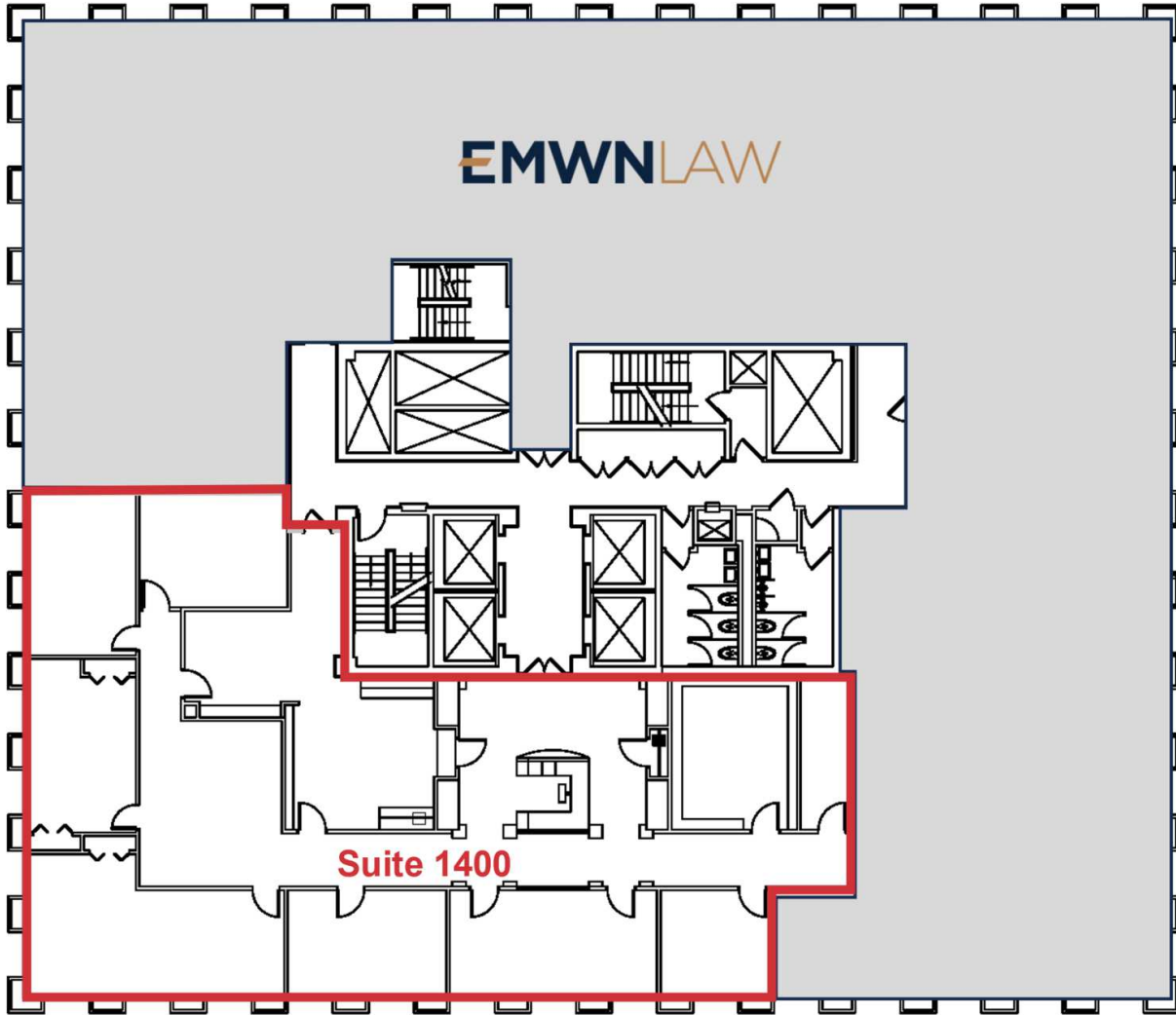
Cathy Burgess Interiors
100 New Market Street, 12th Floor, Lexington, Kentucky 40502
859.224.2000 | CB@CBIBI.com

**CHASE TOWER
14TH FLOOR
LEXINGTON, KENTUCKY**

DATE	06.26.23
ZONE	N.Y.S.
SCALE	1/8" = 1'-0"
REVISIONS	

ASBUILT PLAN

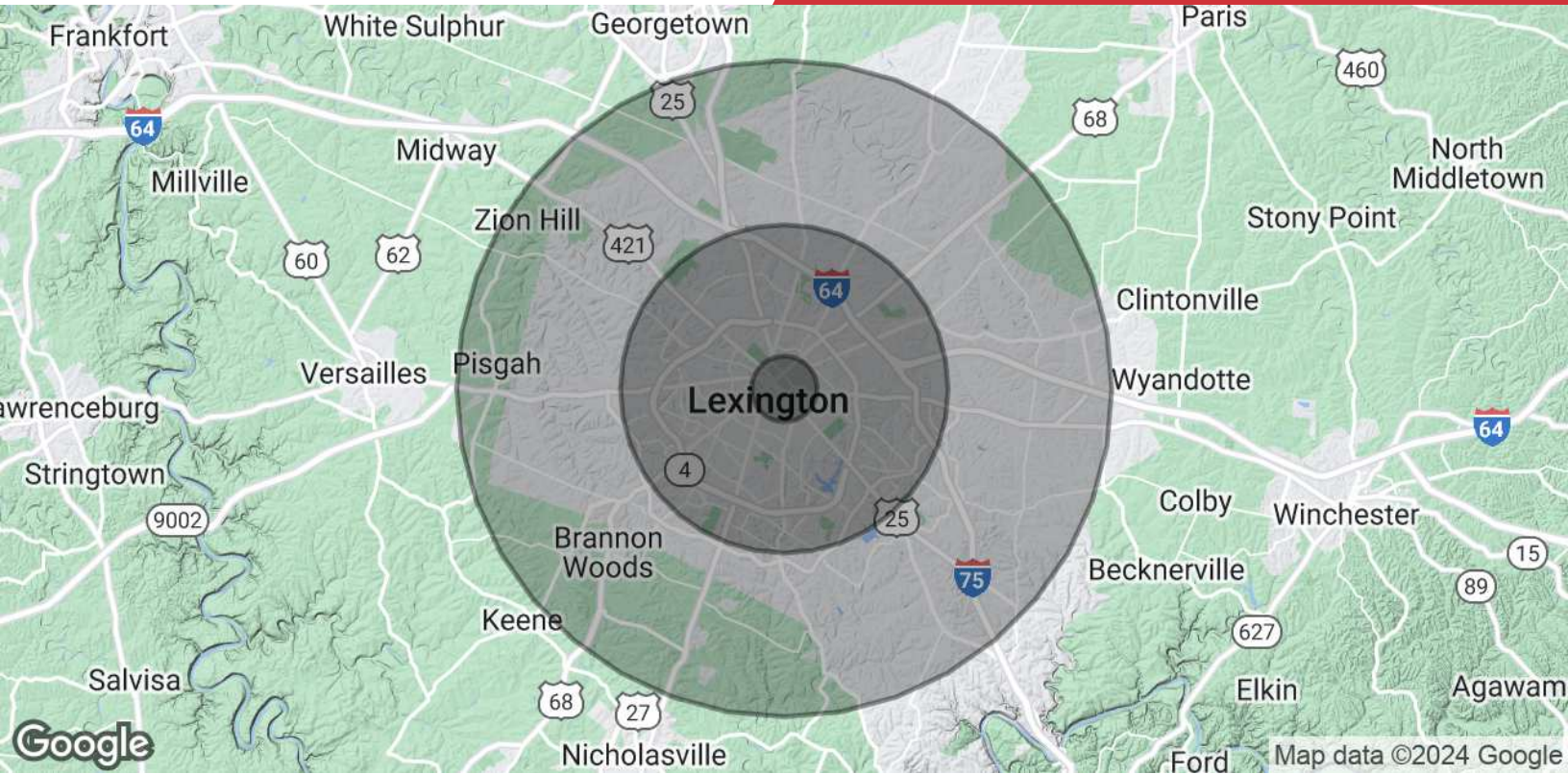
A-1



OVERALL ROOM DIMENSIONS ARE INTENDED TO REPRESENT GENERAL ROOM SIZES AND NOT FINISH DIMENSIONS. ALL EXISTING CONDITIONS SHALL BE FIELD VERIFIED PRIOR TO CONSTRUCTION.



File: FCB21-040-1700.rvt



Population	1 Mile	5 Miles	10 Miles
Total Population	19,967	238,973	368,906
Average Age	29.8	34.4	35.0
Average Age (Male)	29.2	33.3	34.0
Average Age (Female)	31.1	35.7	36.1
Households & Income	1 Mile	5 Miles	10 Miles
Total Households	9,110	104,526	154,956
# of Persons per HH	2.2	2.3	2.4
Average HH Income	\$40,363	\$54,545	\$65,914
Average House Value	\$244,816	\$210,572	\$228,270

* Demographic data derived from 2021 STDB