

# 5,400 SF

## Cromwell Tech Center

104 Sebeth Drive  
Cromwell, Connecticut

CBRE is pleased to present 5,400 SF facility at 104 Sebeth Drive located in the Cromwell Tech Center in Cromwell, Connecticut. This office space can be readily converted into flex space including an open warehouse area with loading dock. The flex space is presently configured with high-quality finishes and includes a combination of windowed and interior offices and conference rooms, along with large open work areas, some with high ceilings. The building is located at Exit 21 off Interstate 91, midway between metro Hartford and New Haven. This exceptional regional location provides for unparalleled highway access and center of state presence.

**+ Building Size**

– 24,200 SF

**+ Available Space**

– 5,400 SF (Available 2/1/25)

**+ Year Built**

– 1994

**+ Parking**

– 3.8/1,000 SF

**+ Zoning**

– Industrial

**+ Ceiling Height**

– 15'-17' clear

**+ Loading Dock**

– One

**+ Lease Rate**

– \$9.75/SF NNN



## Contact Us

**Jennifer Gosselin**

Vice President

+1 860 987 4734

jennifer.gosselin@cbre.com

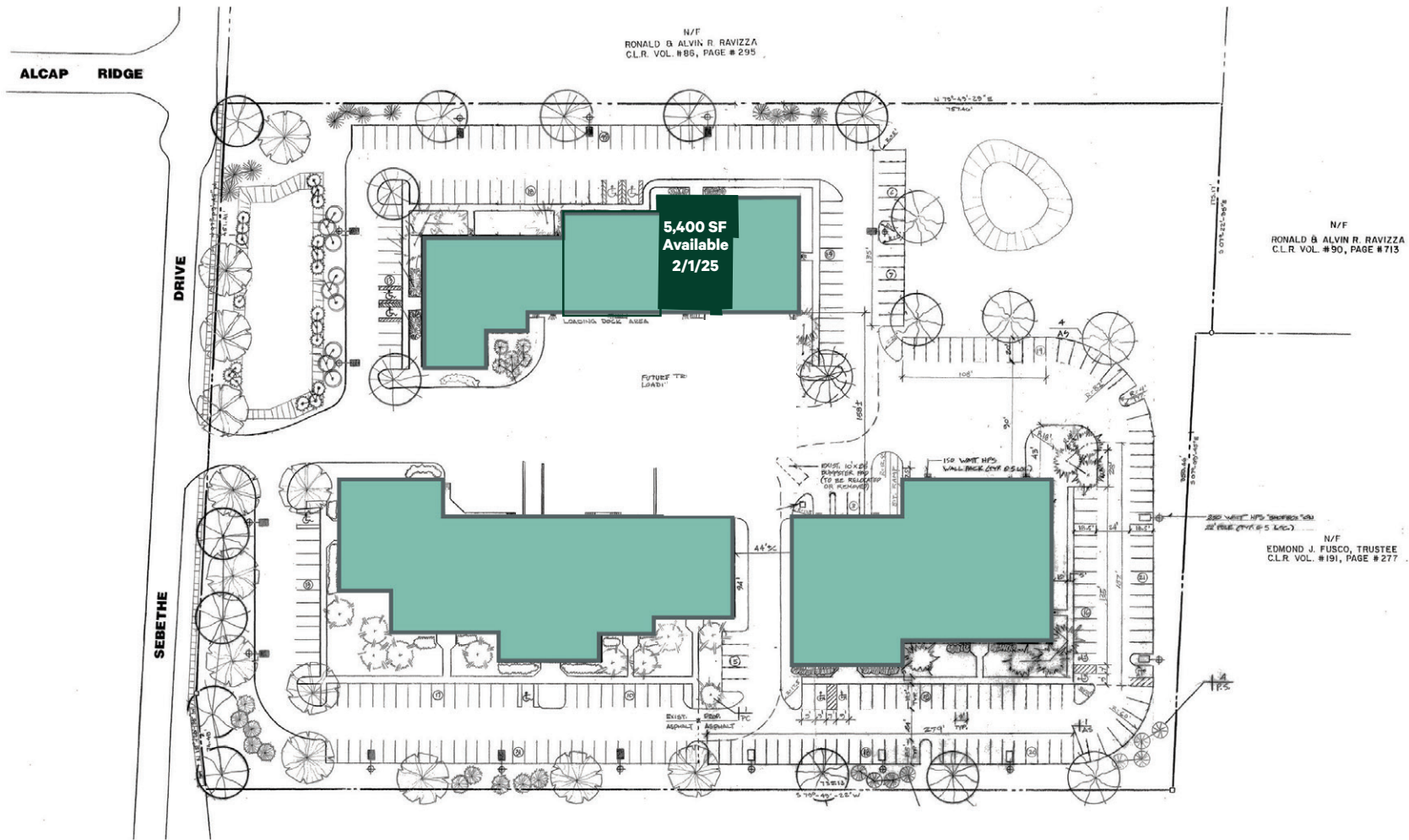
**David Barnes**

Senior Vice President

+1 860 987 4782

david.barnes@cbre.com

Site Plan



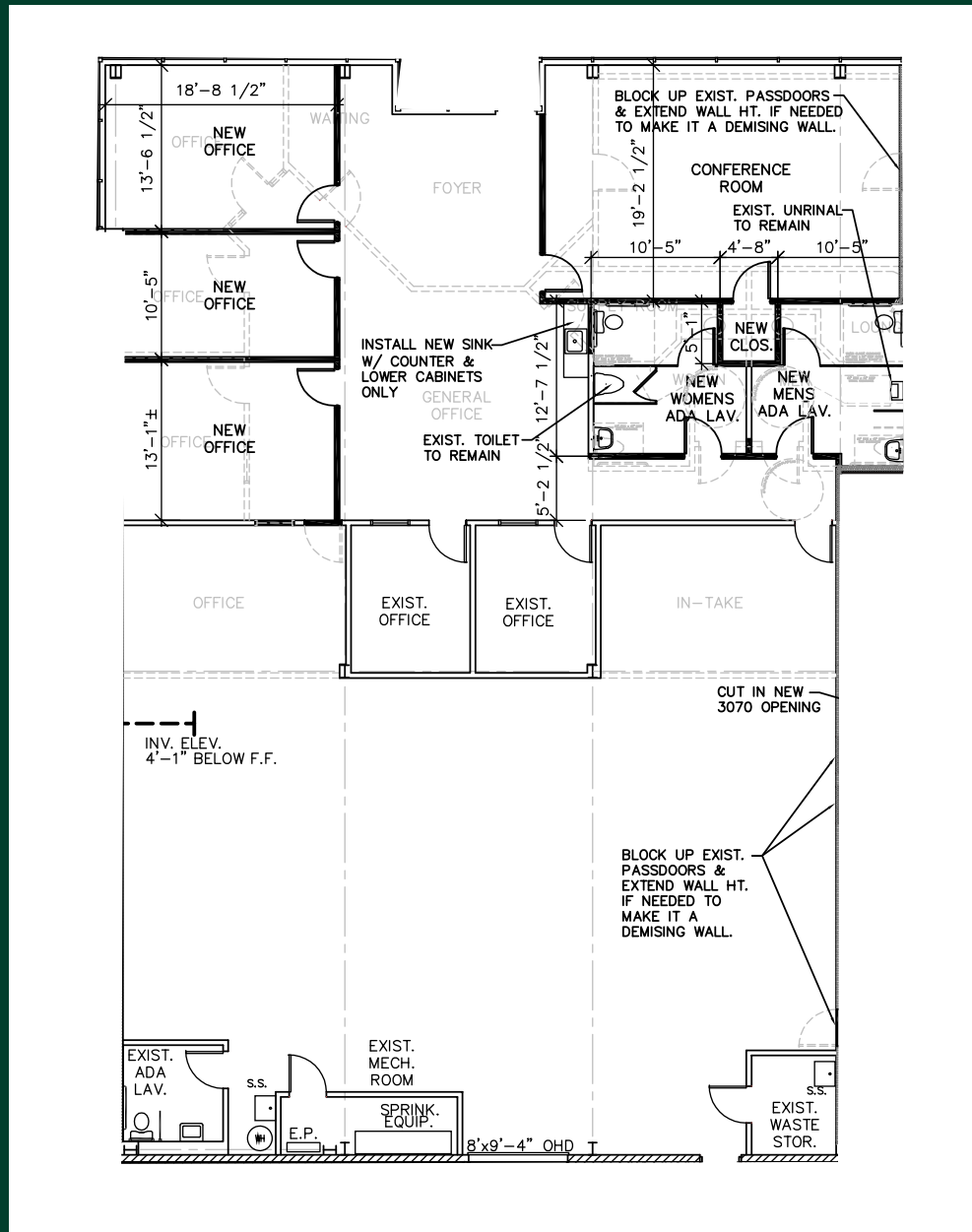


5,400 SF

104 Sebethe Drive | Cromwell, Connecticut

For Lease

# 5,400 SF - Floor Plan



5,400 SF

104 Sebeth Drive | Cromwell, Connecticut

For Lease



© 2024 CBRE, Inc. All rights reserved. This information has been obtained from sources believed reliable, but has not been verified for accuracy or completeness. You should conduct a careful, independent investigation of the property and verify all information. Any reliance on this information is solely at your own risk. CBRE and the CBRE logo are service marks of CBRE, Inc. All other marks displayed on this document are the property of their respective owners, and the use of such logos does not imply any affiliation with or endorsement of CBRE. Photos herein are the property of their respective owners. Use of these images without the express written consent of the owner is prohibited.