

1658 N. MILWAUKEE AVE

CHICAGO, IL



MEDTAIL SPACE AVAILABLE

CHRIS BOBOWSKI
+1 312 424 8066
chris.bobowski@cushwake.com

ANTHONY CIARAVINO
+1 312 424 8193
anthony.ciaravino@cushwake.com



PROPERTY FEATURES

AVAILABLE SPACE

2,521 SF

TERM

THROUGH MARCH 31st, 2032

LOCATION

- Situated in Chicago's Wicker Park neighborhood, on Milwaukee Ave with traffic count of 9,848 VPD.

PROPERTY INFORMATION

- Endcap space available for sublease.
- Site offers 25 parking spaces and strong visibility with signage

NEIGHBORING RETAIL TENANTS

- Verizon
- Lululemon
- The Goddess and the Grocer
- The UPS Store

NEIGHBORHOOD DEMOGRAPHICS

	1 Mile	2 Miles	10 Minute Drive
Population	64,915	590,780	1,229,029
Households	29,065	275,481	524,183
Median Age	37	37.10	37.40
Median HH Income	\$124,799	\$99,636	\$88,359
Daytime Employees	26,436	403,675	686,689

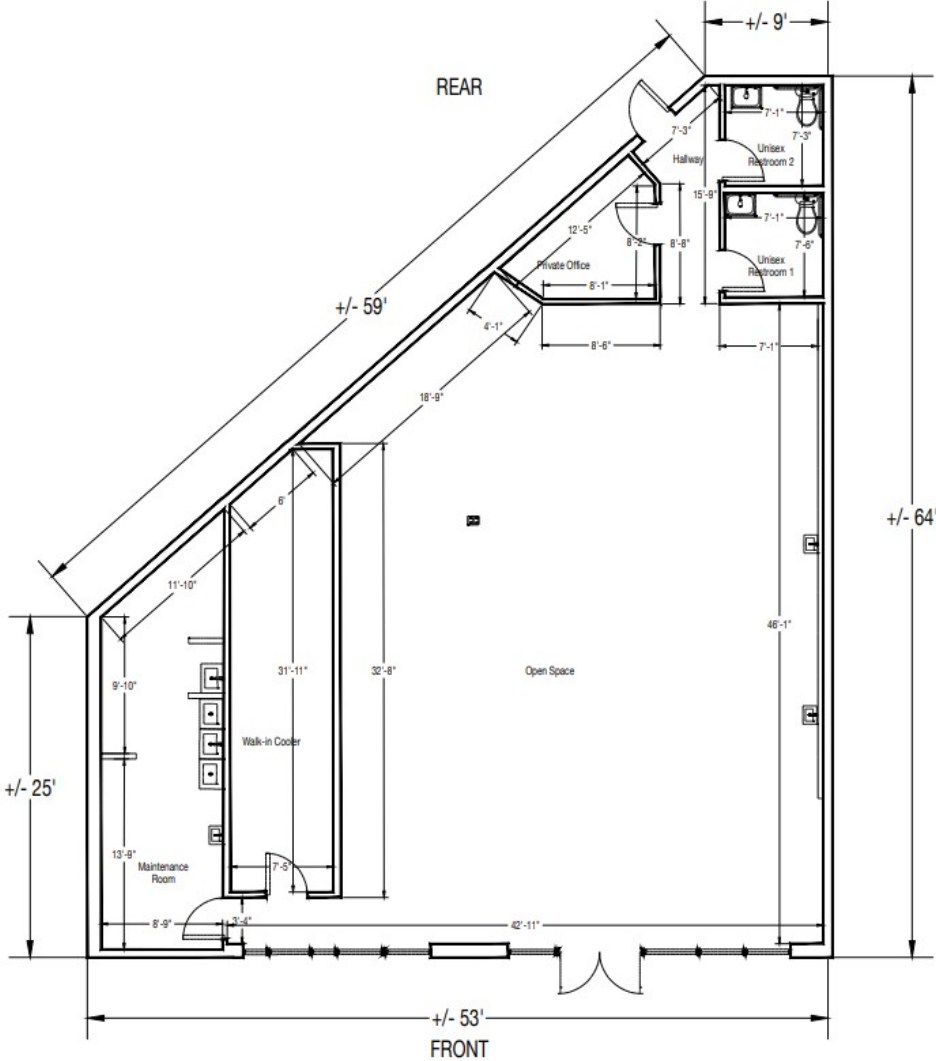
**1658 N. MILWAUKEE AVE
CHICAGO, IL**

CHRIS BOBOWSKI
+1 312 424 8066
chris.bobowski@cushwake.com

ANTHONY CIARAVINO
+1 312 424 8193
anthony.ciaravino@cushwake.com



PROPERTY FLOORPLAN



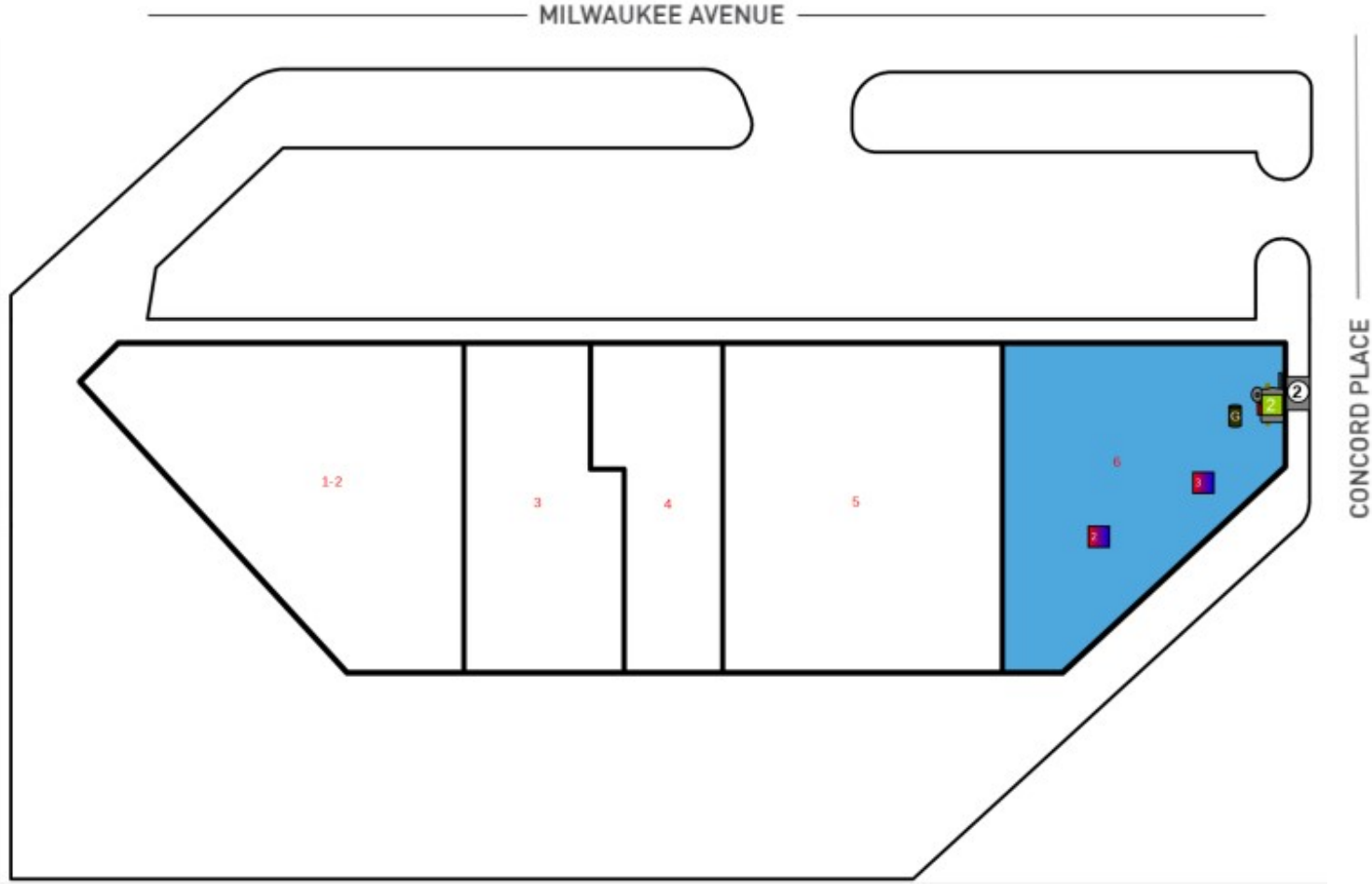
**1658 N. MILWAUKEE AVE
CHICAGO, IL**

CHRIS BOBOWSKI
+1 312 424 8066
chris.bobowski@cushwake.com

ANTHONY CIARAVINO
+1 312 424 8193
anthony.ciaravino@cushwake.com



PROPERTY SITEPLAN



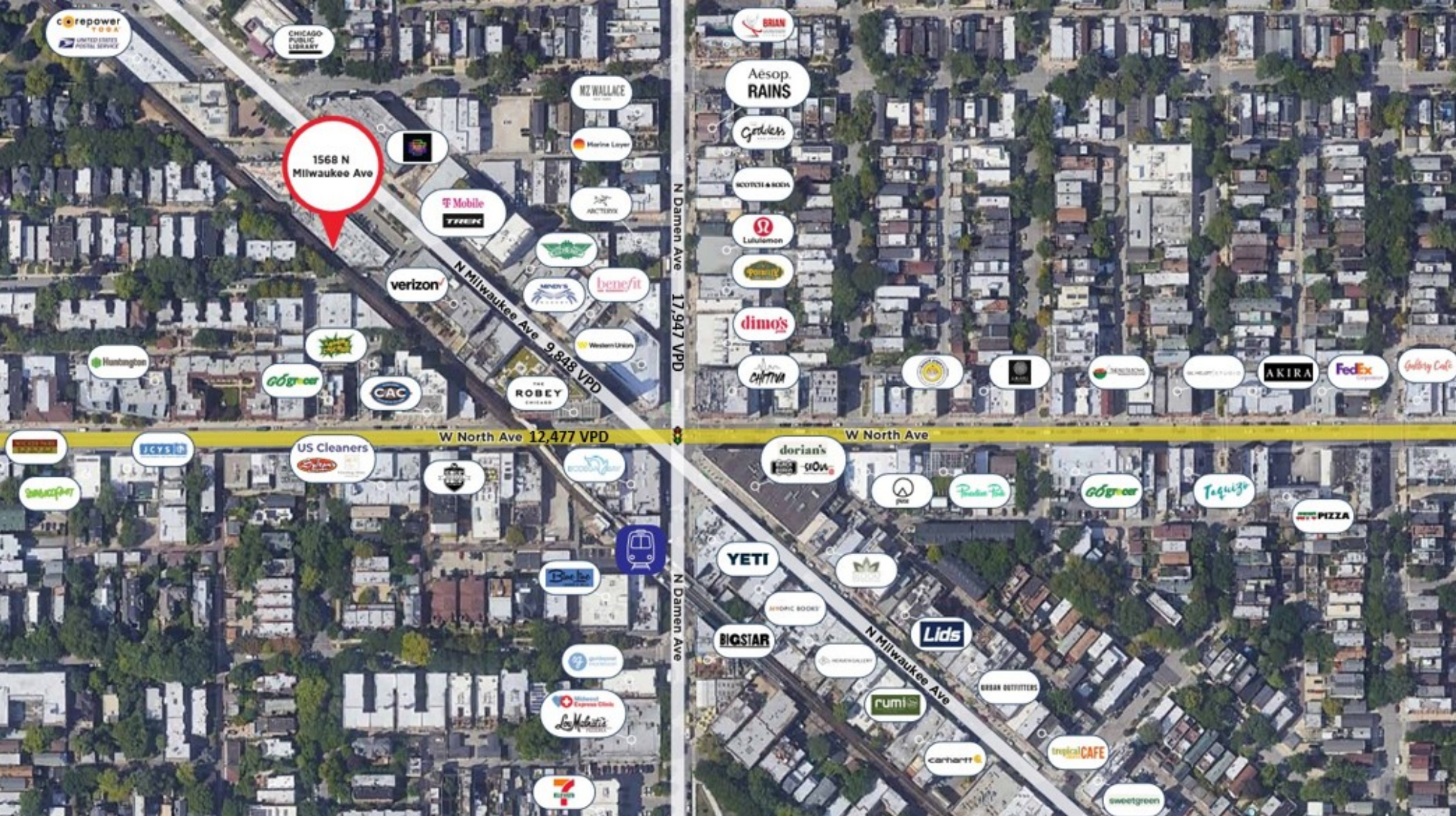
1658 N. MILWAUKEE AVE
CHICAGO, IL

CHRIS BOBOWSKI
+1 312 424 8066
chris.bobowski@cushwake.com

ANTHONY CIARAVINO
+1 312 424 8193
anthony.ciaravino@cushwake.com



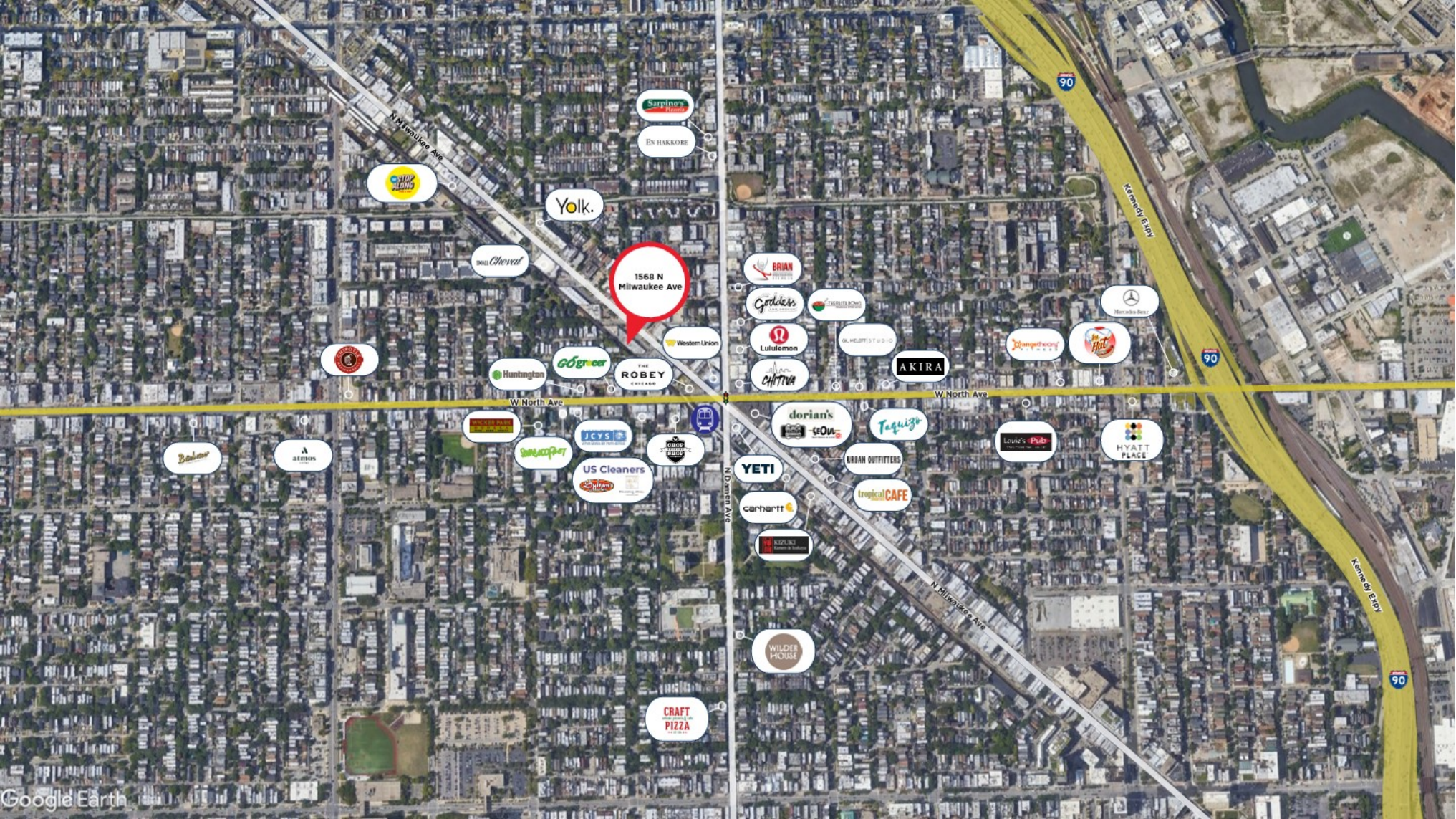
LOCATION & AMENITIES



CHRIS BOBOWSKI
+1 312 424 8066
chris.bobowski@cushwake.com

ANTHONY CIARAVINO
+1 312 424 8193
anthony.ciaravino@cushwake.com

LOCATION & AMENITIES



CHRIS BOBOWSKI
 +1 312 424 8066
 chris.bobowski@cushwake.com

ANTHONY CIARAVINO
 +1 312 424 8193
 anthony.ciaravino@cushwake.com

