



COMMERCIAL REAL ESTATE

LAND FOR SALE



.47 +/- Vacant Lot | Historic Downtown  
S Main St.  
Havana, FL 32333

**BEN WILKINSON**

Partner/Broker  
850.509.5258  
benw@tlgproperty.com

**TLG REAL ESTATE SERVICES**

3520 Thomasville Road, Suite 200  
Tallahassee, FL 32309  
O: 850.385.6363



## EXECUTIVE SUMMARY

# .47 +/- VACANT LOT | HISTORIC DOWNTOWN

S MAIN ST, HAVANA, FL 32333

**OFFERING SUMMARY**

**Sale Price:** \$110,000.00

**Lot Size:** 0.47 Acres

**Zoning:** Development District  
(See attached Zoning Map)

**APN:** 2-34-3N-2W-0000-00112-0500

**PROPERTY OVERVIEW**

.47 +/- acre vacant lot for sale in Historic Downtown Havana. Lot has high visibility and 114' of frontage along N Main St. Property is suitable for commercial use and is next door to Capital City Bank. There are several retailers in the area including Subway, Burger King, Badcock Home Furniture, Auto Zone, Ford, Exxon, and many local shops and restaurants.

**LOCATION OVERVIEW**

Located in Havana, FL on S Main St. (US 27), just South of 9th Ave. Havana is less than a half hour from Tallahassee and only 20 minutes from I-10.

**Ben Wilkinson**  
850.509.5258  
benw@tlgproperty.com

**TLG REAL ESTATE SERVICES**  
3520 Thomasville Road, Suite 200, Tallahassee, FL 32309  
850.385.6363







PARCEL/AERIAL MAP

# .47 +/- VACANT LOT | HISTORIC DOWNTOWN S MAIN ST, HAVANA, FL 32333



**Ben Wilkinson**  
850.509.5258  
benw@tlgproperty.com

**TLG REAL ESTATE SERVICES**  
3520 Thomasville Road, Suite 200, Tallahassee, FL 32309  
850.385.6363







## RETAILER MAP

**.47 +/- VACANT LOT | HISTORIC DOWNTOWN**  
S MAIN ST, HAVANA, FL 32333



**Ben Wilkinson**  
850.509.5258  
benw@tlgproperty.com

**TLG REAL ESTATE SERVICES**

3520 Thomasville Road, Suite 200, Tallahassee, FL 32309  
850.385.6363



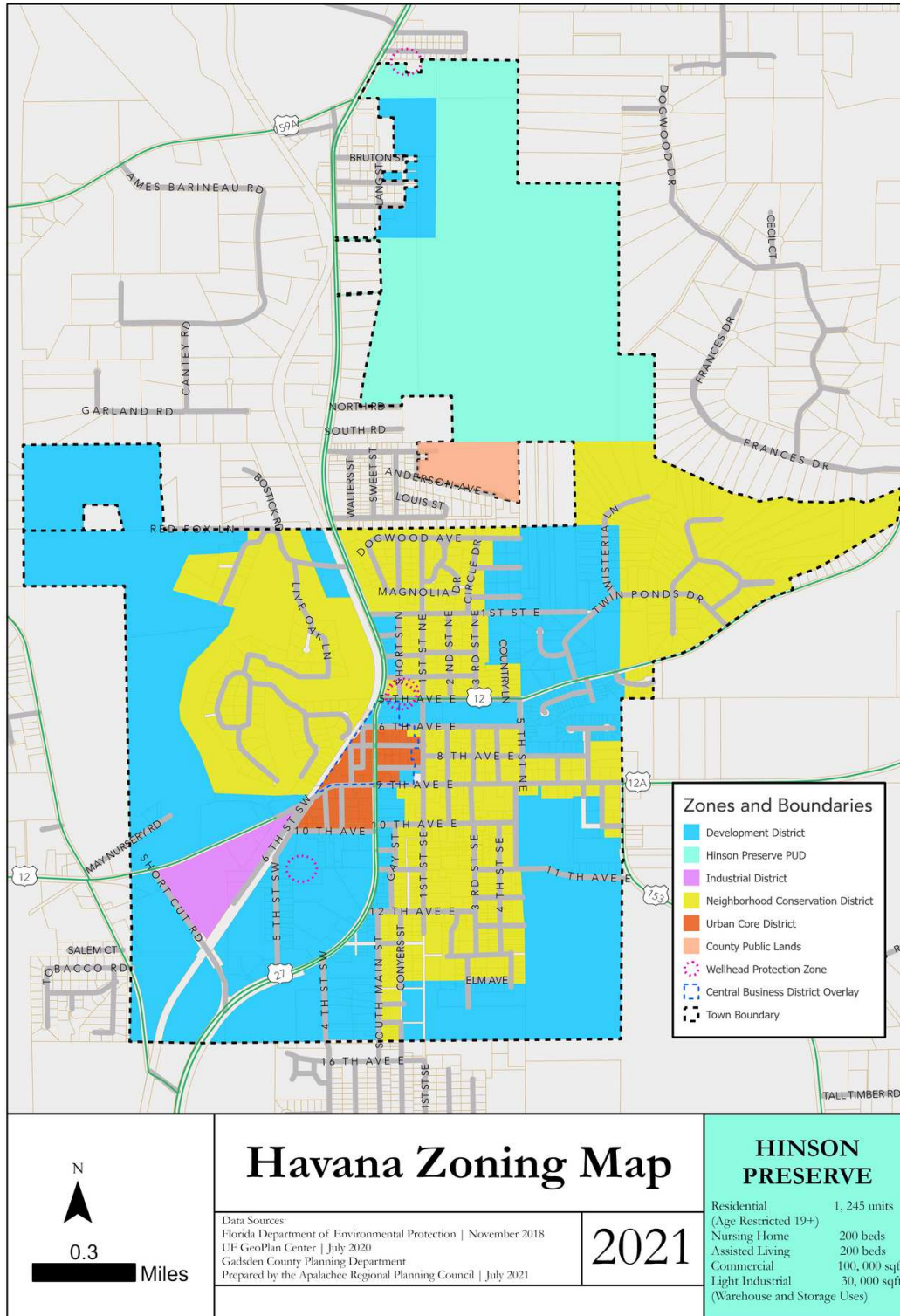




## HAVANA ZONING MAP

# .47 +/- VACANT LOT | HISTORIC DOWNTOWN

S MAIN ST, HAVANA, FL 32333



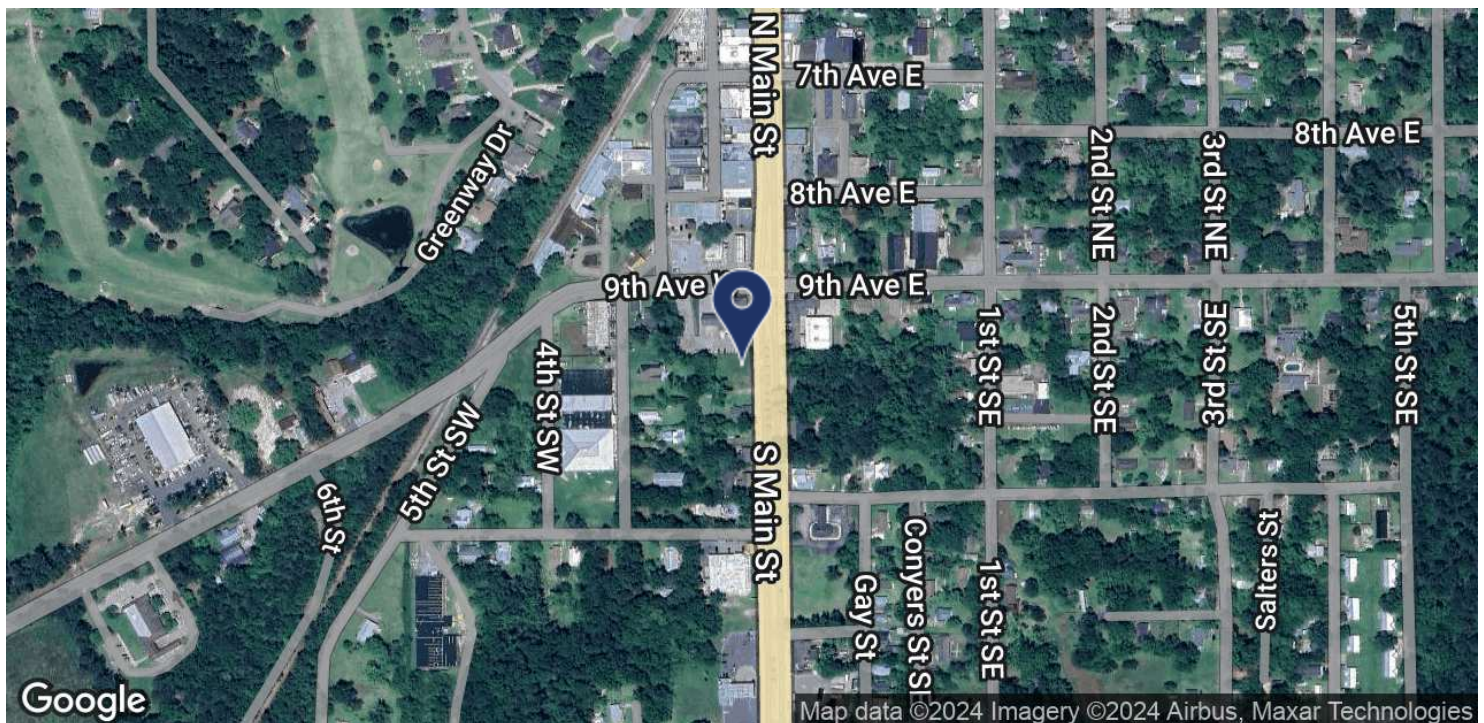
**Ben Wilkinson**  
 850.509.5258  
 benw@tlgproperty.com

**TLG REAL ESTATE SERVICES**  
 3520 Thomasville Road, Suite 200, Tallahassee, FL 32309  
 850.385.6363





**.47 +/- VACANT LOT | HISTORIC DOWNTOWN**  
S MAIN ST, HAVANA, FL 32333



This information has been obtained from sources believed reliable. We have not verified it and make no guarantee, warranty or representation about it. Any projections, opinions, assumptions or estimates used are for example only and do not represent the current or future performance of the property. You and your advisors should conduct a careful, independent investigation of the property to determine to your satisfaction the suitability of the property for your needs. Photos herein are the property of their respective owners and use of these images without the express written content of the owner is prohibited.

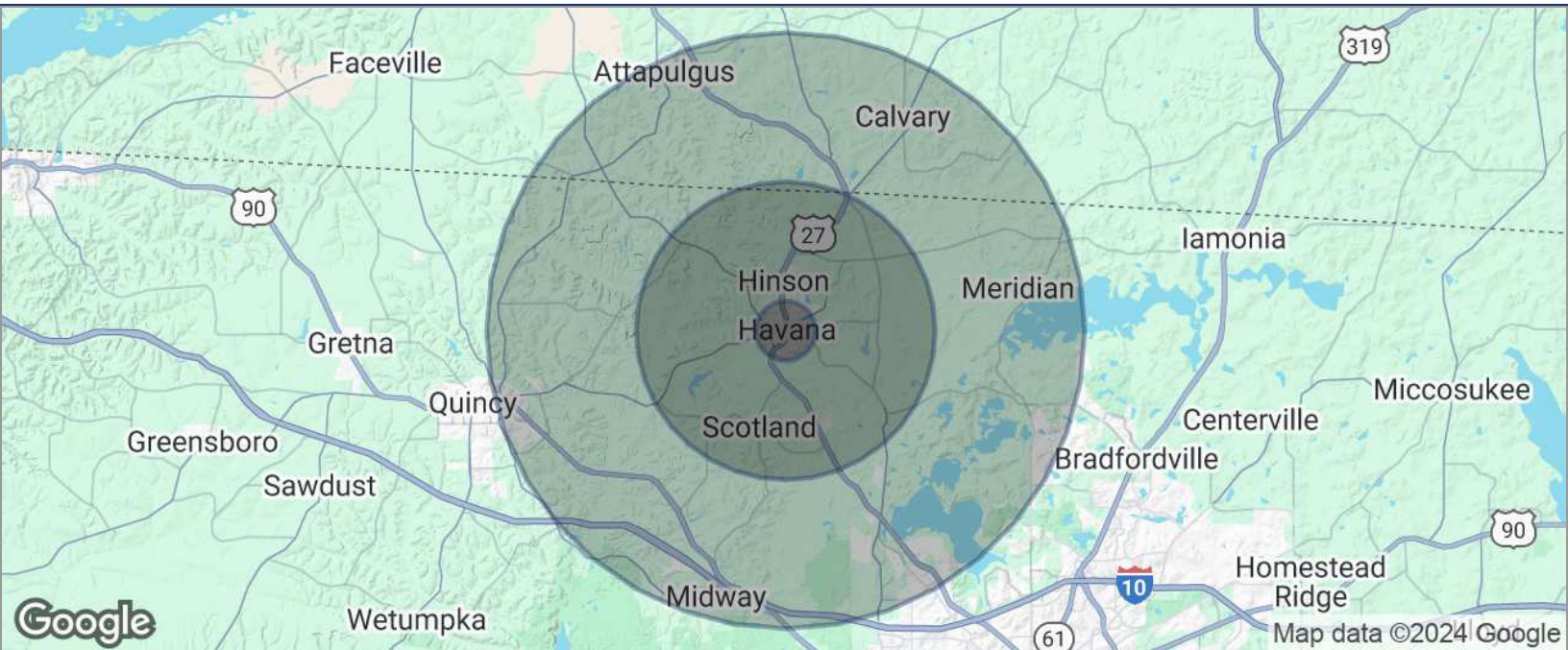




## DEMOGRAPHICS MAP

# .47 +/- VACANT LOT | HISTORIC DOWNTOWN

S MAIN ST, HAVANA, FL 32333



POPULATION	1 MILE	5 MILES	10 MILES
TOTAL POPULATION	2,729	10,596	47,645
MEDIAN AGE	44	47	43
MEDIAN AGE (MALE)	42	46	42
MEDIAN AGE (FEMALE)	46	48	44
HOUSEHOLDS & INCOME	1 MILE	5 MILES	10 MILES
TOTAL HOUSEHOLDS	1,158	4,585	19,012
# OF PERSONS PER HH	2.4	2.3	2.5
AVERAGE HH INCOME	\$72,475	\$82,053	\$111,153
AVERAGE HOUSE VALUE	\$185,923	\$214,352	\$308,048

\* Demographic data derived from 2020 ACS - US Census

**Ben Wilkinson**  
850.509.5258  
benw@tlgproperty.com

**TLG REAL ESTATE SERVICES**  
3520 Thomasville Road, Suite 200, Tallahassee, FL 32309  
850.385.6363

