

OHIA BUILDING 5TH FLOOR

1149 - 1159 Bethel Street, Honolulu, HI 96813

FOR LEASE

Office Space in Downtown



PROPERTY DESCRIPTION

Secure your place in Honolulu's energetic downtown scene with this value-driven office opportunity.

Located at Bethel and Pauahi Streets, the Ōhia Building offers proximity to essential government services and commercial centers. Versatile, move-in ready spaces accommodate businesses large and small, including the opportunity to lease a full floor.

©2026 Sofos Realty Corporation. All information contained herein is obtained from sources deemed reliable. However, no representations or guarantees are made as to the accuracy thereof, and it is provided herein subject to errors, omissions, changes and withdrawals without notice. Offeror and/or his agent should confirm this information prior to making any offer. Buyer agrees that all negotiation shall be conducted through Sofos Realty Corporation only. No subagency is offered or intended.

PROPERTY SNAPSHOT

Location:	Downtown Honolulu
Property Type:	Office
TMK:	(1) 2-1-3-10
Rent:	\$1.50 - \$1.75 / SF / MO
CAM:	\$1.25 / SF / Month <i>Includes electricity & AC</i>
Zoning:	BMX-4

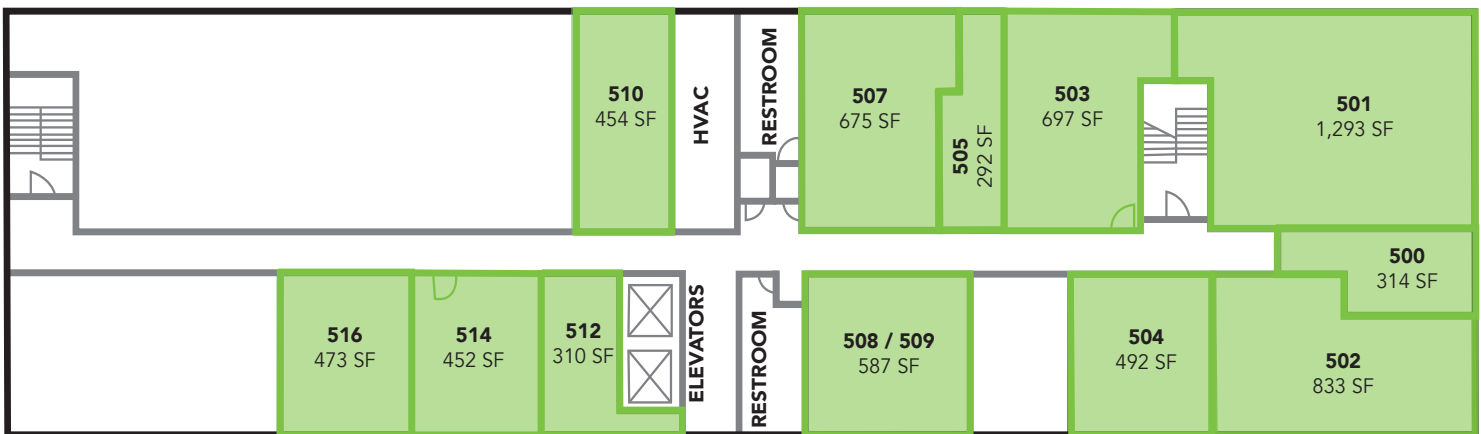
 **SOFOS REALTY**
CORPORATION
Commercial Brokerage • Property Management

AVAILABLE SPACE

UNIT	TYPE	SF
500	Office	314 SF
501	Office	1,293 SF
502	Office	833 SF
503	Office	697 SF
504	Office	492 SF
505	Office	292 SF
507	Office	675 SF
508/509	Office	587 SF
510	Office	454 SF
512	Office	310 SF
514	Office	452 SF
516	Office	473 SF



FLOOR PLAN



Site Plans are for marketing purposes only and may not accurately reflect the property.