



# Join Cedars Sinai at:

# 25 Six

## FAIR OAKS AVENUE

## World-Class Location

- 91,000 SF Medical/ Office Building
- Prime Class A 3-story office building in South Pasadena
- Many updated suites available
- Common areas feature free WiFi, furniture and landscape to promote a flexible and collaborative work environment for tenants
- Great Ownership/Property Management
- Excellent retail amenities nearby
- WalkScore of 94 (Walker's Paradise)
- 1/2 mile from South Pasadena Metro Gold Line Station
- High Speed Fiber Ready (AT&T) and Level 3
- Keyless entry on all doors
- Competitive parking rates

\* Tease rate for first year.  
Medical rate - Negotiable.

For Information, Please Contact:

**Tina LaMonica, SIOR NAI Capital Pasadena**

Executive Vice President 225 South Lake Avenue,  
626.204.1523 office Suite M270,  
tlamonica@naicapital.com Pasadena, CA 91101  
CA DRE Lic #01841057

## Medical/Office Space Available For Lease

\* Asking Lease Rate: \$2.75 per SF/ FSG

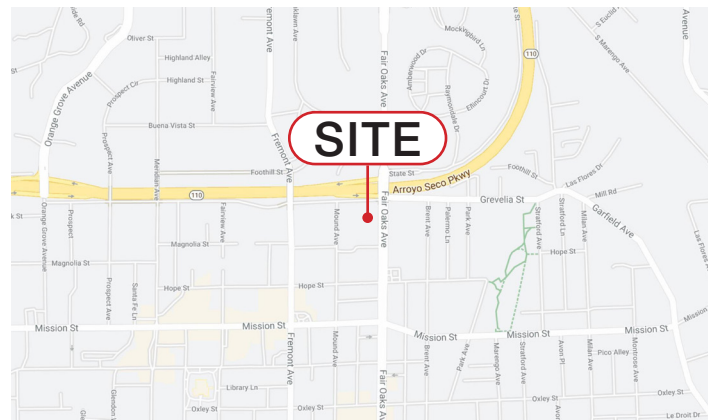
Floor 1: 4,845 SF

Floor 2: 1,069 SF - 3,404 SF

Floor 3: 1,629 SF - 1,730SF

Parking: Unreserved/Uncovered @ \$85.00/month

Reserved/Covered: @ \$120.00/month



**NAI Capital**  
COMMERCIAL REAL ESTATE SERVICES, WORLDWIDE



### Available Space Floor 1

Floor	Suite	Use	SF Available	Floor Contiguous	Rent	Occupancy	Term
1st	158	Office/Medical	4,845 SF	4,845 SF	* \$2.75 / SF/ FSG	September, 2026	2 - 5 Yrs

### Available Space Floor 2

Floor	Suite	Use	SF Available	Floor Contiguous	Rent	Occupancy	Term
2nd	231	Office/Medical	3,404 SF	3,404 SF	* \$2.75 / SF/ FSG	April, 2026	2 - 5 Yrs
2nd	280	Office/Medical	1,069 SF	2,386 SF	* \$2.75 / SF/ FSG	Available Now	2 - 5 Yrs

### Available Space Floor 3

Floor	Suite	Use	SF Available	Floor Contiguous	Rent	Occupancy	Term
3rd	348	Office/Medical	1,730 SF	1,730 SF	* \$2.75 / SF/ FSG	Available Now	2 - 5 Yrs
3rd	355	Office/Medical	1,629 SF	1,629 SF	* \$2.75 / SF/ FSG	Available Now	2 - 5 Yrs

No warranty, express or implied, is made as to the accuracy of the information contained herein. This information is submitted subject to errors, omissions, change of price, rental or other conditions, withdrawal without notice, and is subject to any special listing conditions imposed by our principals. Cooperating brokers, buyers, tenants and other parties who receive this document should not rely on it, but should use it as a starting point of analysis, and should independently confirm the accuracy of the information contained herein through a due diligence review of the books, records, files and documents that constitute reliable sources of the information described herein. Logos are for identification purposes only and may be trademarks of their respective companies. NAI Capital, Inc. CA DRE Lic. #02130474

**Tina LaMonica, SIOR**

Executive Vice President

626.204.1523 office

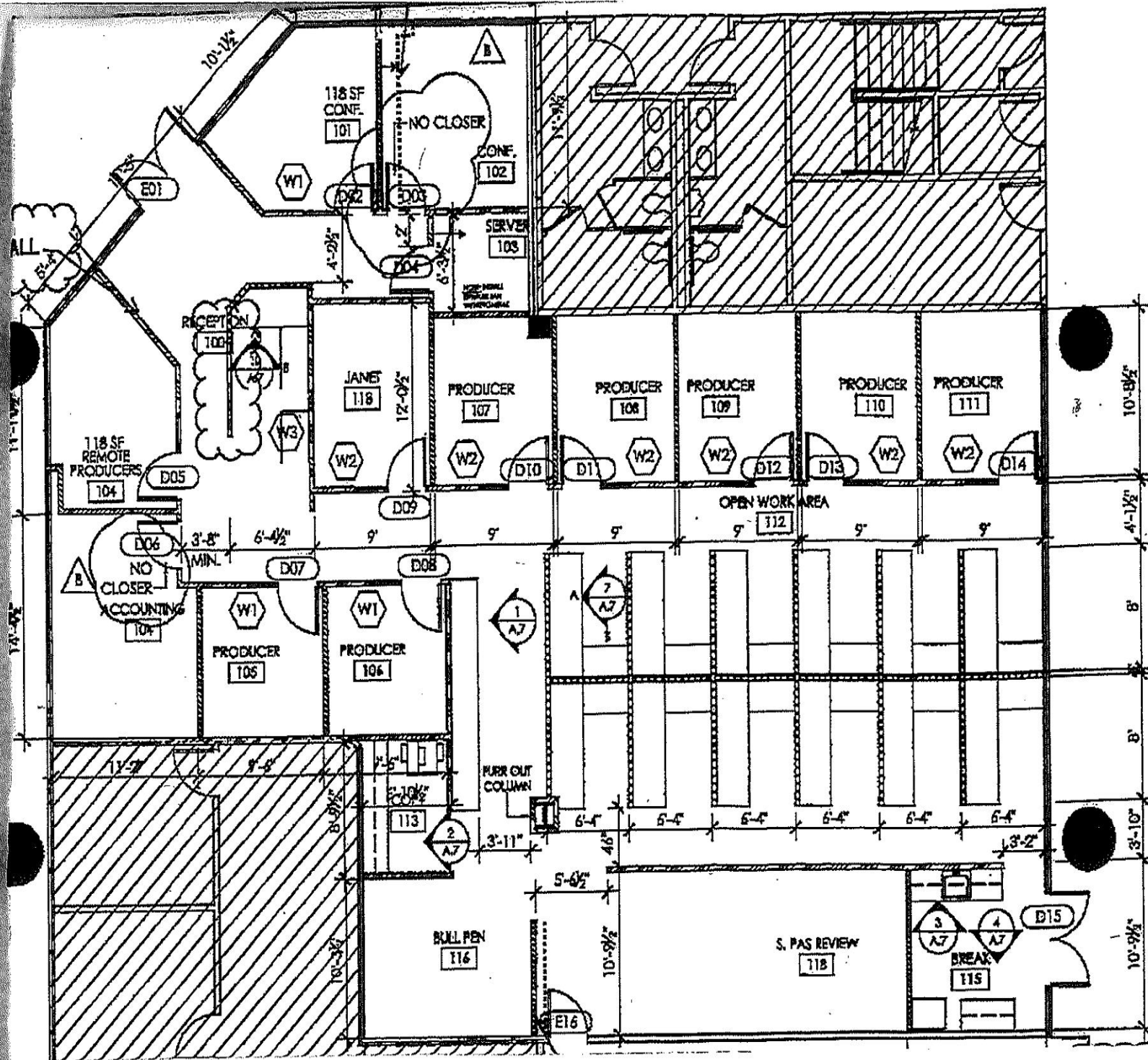
tlamonica@naicapital.com

CA DRE Lic #01841057



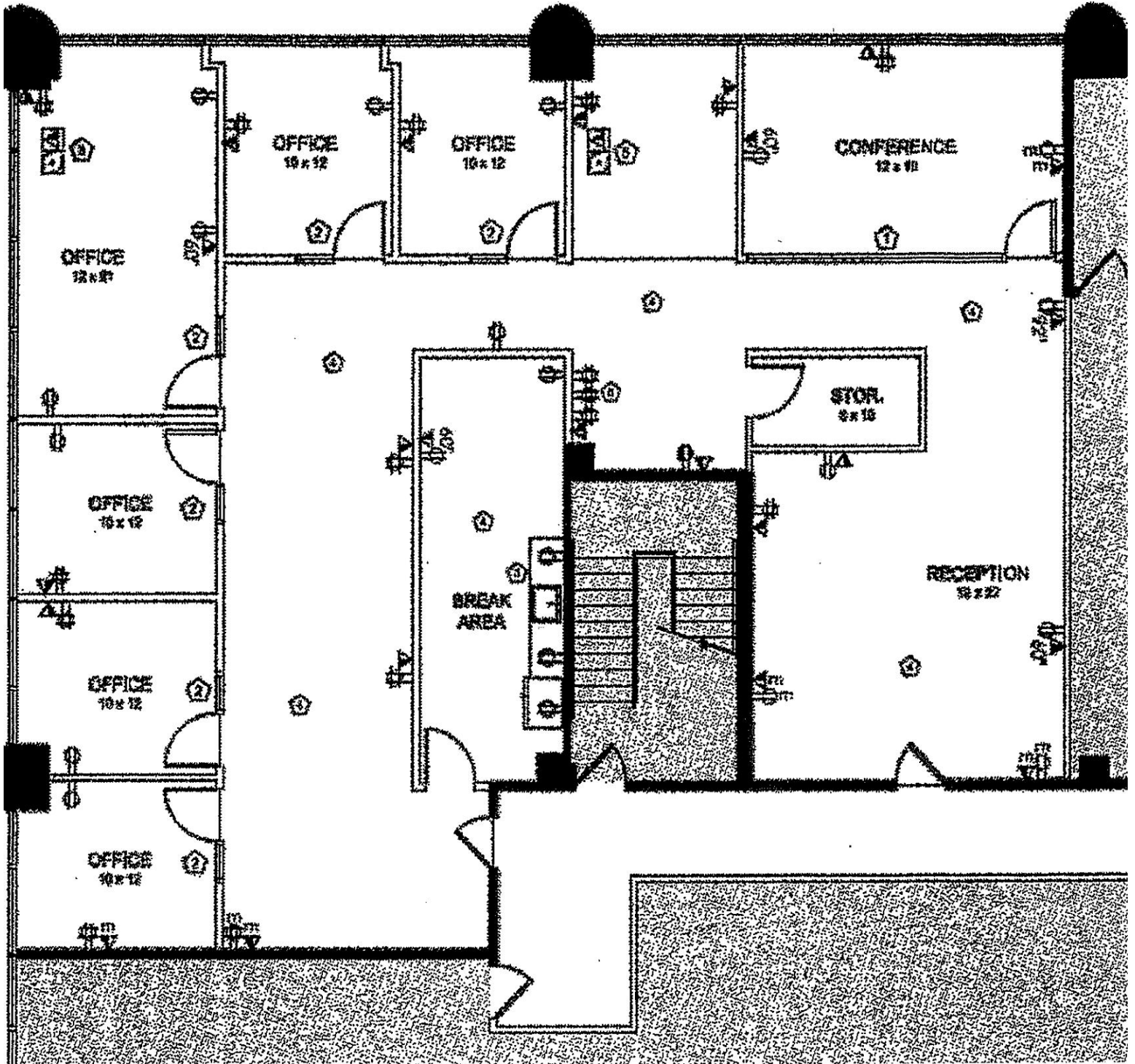
\* Teaser Rate for 1st year. Medical rate - Negotiable.

# Suite 158



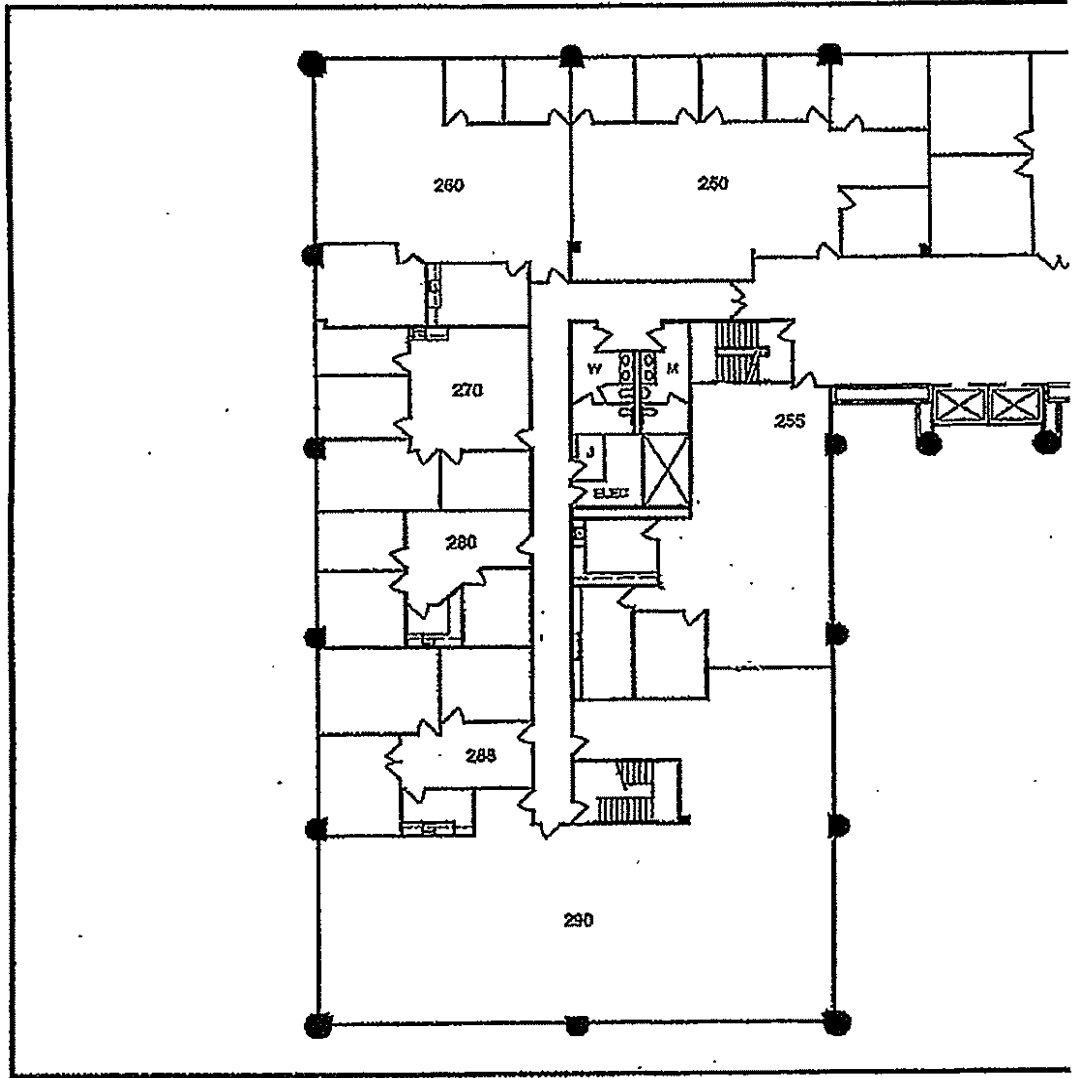
No warranty, express or implied, is made as to the accuracy of the information contained herein. This information is submitted subject to errors, omissions, change of price, rental or other conditions, withdrawal without notice, and is subject to any special listing conditions imposed by our principals. Cooperating brokers, buyers, tenants and other parties who receive this document should not rely on it, but should use it as a starting point of analysis, and should independently confirm the accuracy of the information contained herein through a due diligence review of the books, records, files and documents that constitute reliable sources of the information described herein. Logos are for identification purposes only and may be trademarks of their respective companies. NAI Capital, Inc. CA DRE Lic. #02130474

# Suite 231



No warranty, express or implied, is made as to the accuracy of the information contained herein. This information is submitted subject to

errors, omissions, change of price, rental or other conditions, withdrawal without notice, and is subject to any special listing conditions imposed by our principals. Cooperating brokers, buyers, tenants and other parties who receive this document should not rely on it, but should use it as a starting point of analysis, and should independently confirm the accuracy of the information contained herein through a due diligence review of the books, records, files and documents that constitute reliable sources of the information described herein. Logos are for identification purposes only and may be trademarks of their respective companies. NAI Capital, Inc. CA DRE Lic. #02130474

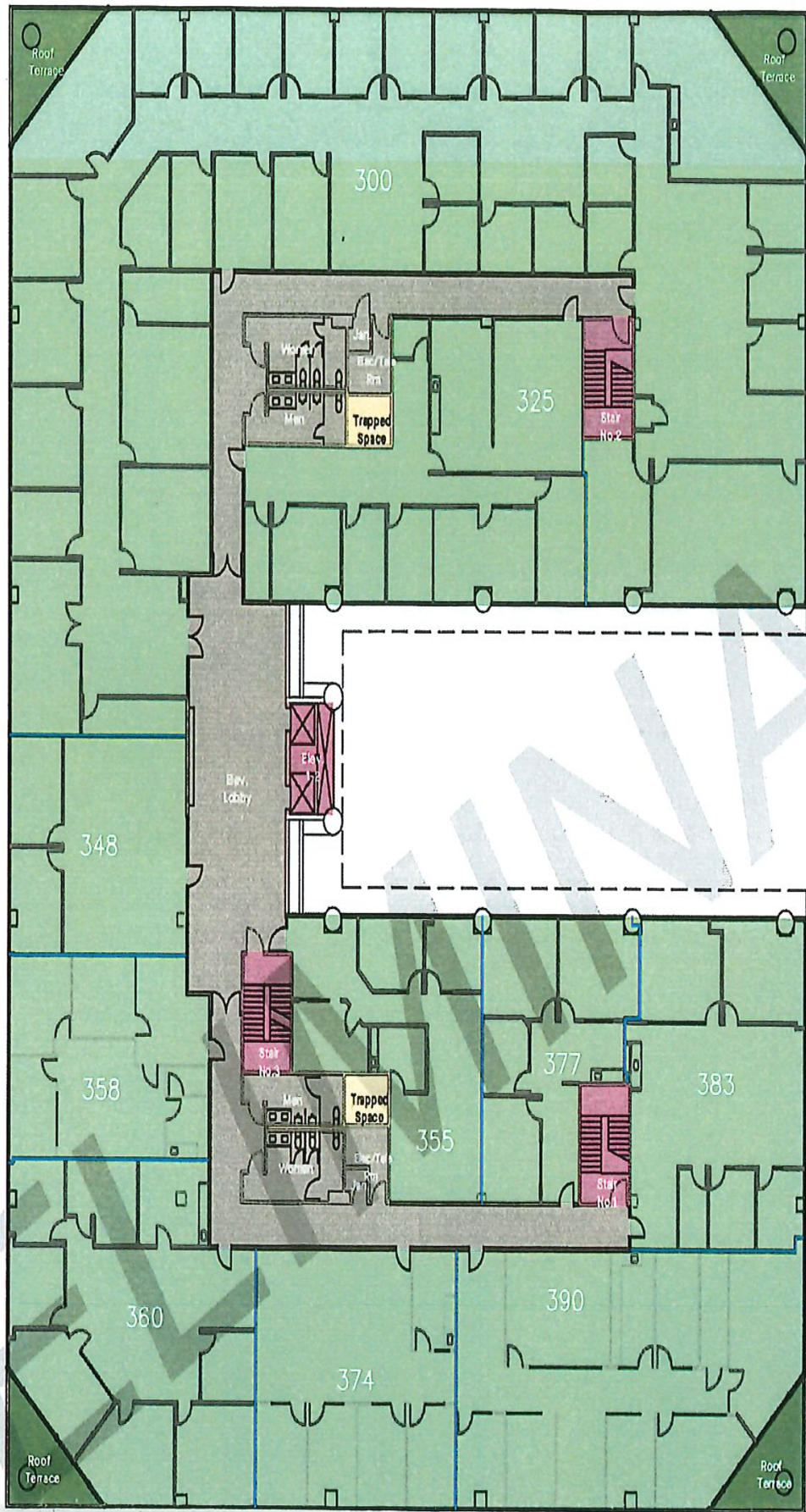


**AB2** AS-BUILT  
 ISSUE DATE: 10/10/17 | JOB #: 17.0214 | DRAWN BY: KW

**SIX25 SOUTH PASADENA**  
 625 FAIR OAKS AVENUE | SECOND FLOOR  
 SOUTH PASADENA, CALIFORNIA 91030

No warranty, express or implied, is made as to the accuracy of the information contained herein. This information is submitted subject to errors, omissions, change of price, rental or other conditions, withdrawal without notice, and is subject to any special listing conditions imposed by our principals. Cooperating brokers, buyers, tenants and other parties who receive this document should not rely on it, but should use it as a starting point of analysis, and should independently confirm the accuracy of the information contained herein through a due diligence review of the books, records, files and documents that constitute reliable sources of the information described herein. Logos are for identification purposes only and may be trademarks of their respective companies. NAI Capital, Inc. CA DRE Lic. #02130474





No warranty, express or implied, is made as to the accuracy of the information contained herein. This information is submitted subject to errors, omissions, change of price, rental or other conditions, withdrawal without notice, and is subject to any special listing conditions imposed by our principals. Cooperating brokers, buyers, tenants and other parties who receive this document should not rely on it, but should use it as a starting point of analysis, and should independently confirm the accuracy of the information contained herein through a due diligence review of the books, records, files and documents that constitute reliable sources of the information described herein. Logos are for identification purposes only and may be trademarks of their respective companies. NAI Capital, Inc. CA DRE Lic. #02130474