



JOHN BUCCINNO, SIOR CCIM
610.370.8508
JBUCCINNO@NAIKEYSTONE.COM

VAN REED OFFICE CENTER

2209 QUARRY DR | WEST LAWN, PA 19609

2,400 SQ FT AVAILABLE FOR LEASE

NAIKeystone

875 BERKSHIRE BLVD, STE 102,
WYOMISSING, PA 19610
610.779.1400 | NAIKEYSTONE.COM



ABOUT THIS PROPERTY

- FOR LEASE
- 1,176 – 1,445 SF AVAILABLE
- UNITS CAN BE SUBDIVIDED
- FULL BUILD-OUTS AVAILABLE

- FLEXIBLE LAYOUTS
- EXCELLENT AMENITIES NEARBY
- CONVENIENT PARKING
- PROFESSIONALLY MANAGED

AVAILABLE SPACES

- SUITE A15 - 1,176 SF
- SUITE B21 - 1,445 SF

JOHN BUCCINNO, SIOR CCIM
610.370.8508
JBUCINNO@NAIKEYSTONE.COM

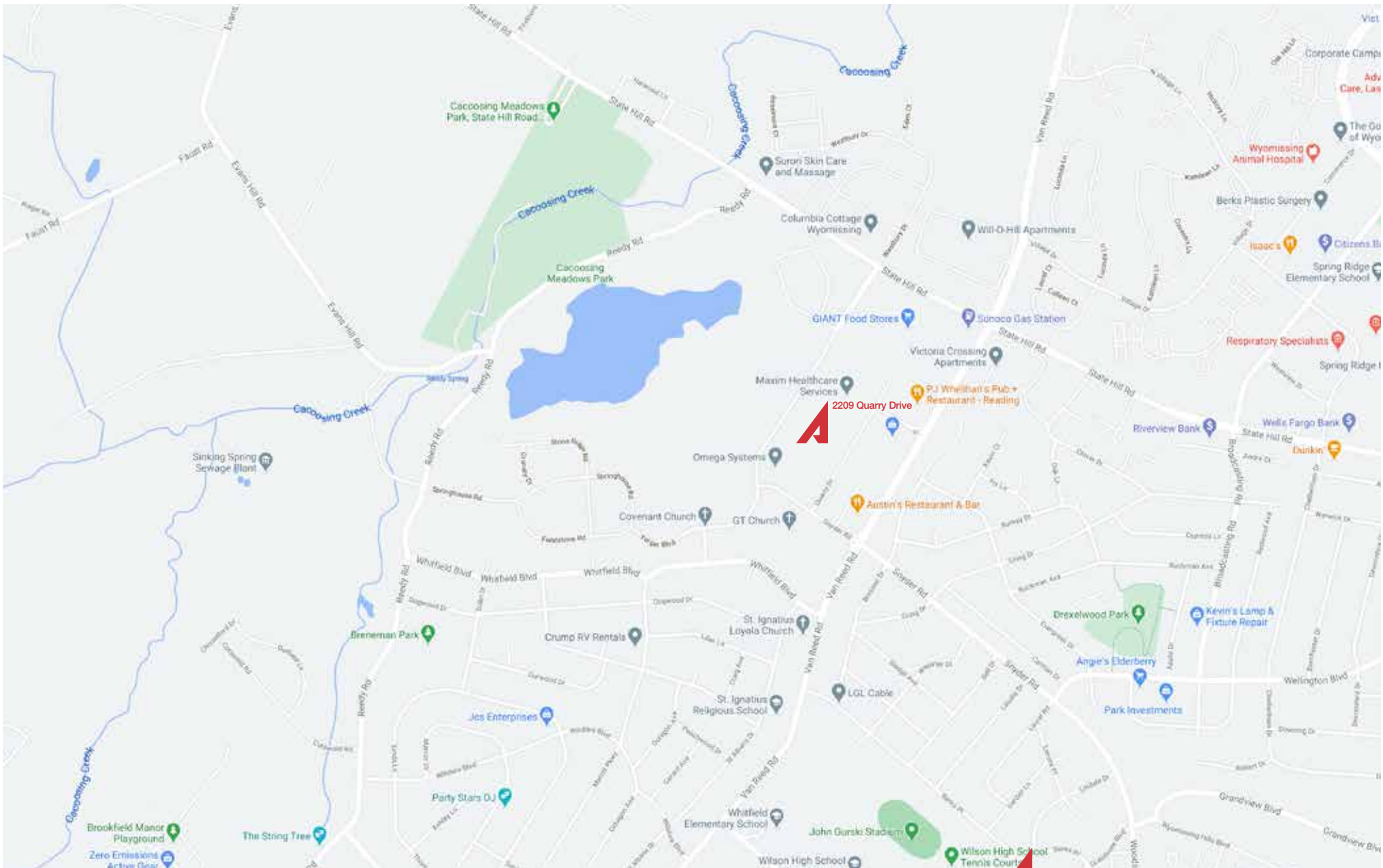
VAN REED OFFICE CENTER

2209 QUARRY DR | WEST LAWN, PA 19609

2,400 SQ FT AVAILABLE FOR LEASE

NAIKeystone

875 BERKSHIRE BLVD, STE 102,
WYOMISSING, PA 19610
610.779.1400 | NAIKEYSTONE.COM



JOHN BUCCINNO, SIOR CCIM
610.370.8508
JBUCINNO@NAIKEYSTONE.COM

VAN REED OFFICE CENTER

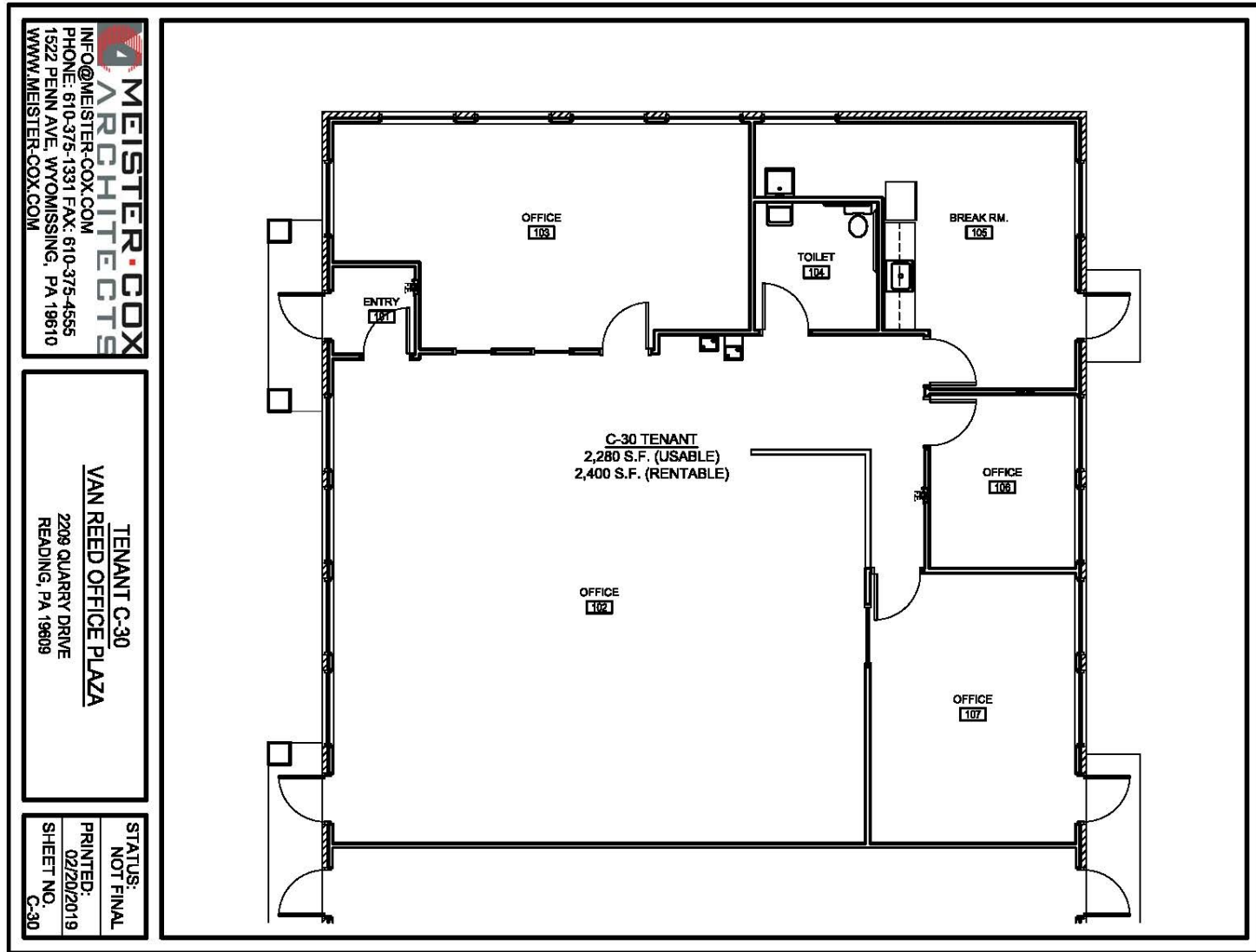
2209 QUARRY DR | WEST LAWN, PA 19609

1,176 - 1,445 SQ FT AVAILABLE FOR LEASE

NAIKeystone

875 BERKSHIRE BLVD, STE 102,
WYOMISSING, PA 19610
610.779.1400 | NAIKEYSTONE.COM

SUITE C-39 FLOOR PLAN - 2,400 SF



MEISTER-COX ARCHITECTS
 INFO@MEISTER-COX.COM
 PHONE: 610-375-1331 FAX: 610-375-4555
 1522 PENN AVE, WYOMISSING, PA 19610
 WWW.MEISTER-COX.COM

TENANT C-30
VAN REED OFFICE PLAZA
 2209 QUARRY DRIVE
 READING, PA 19609

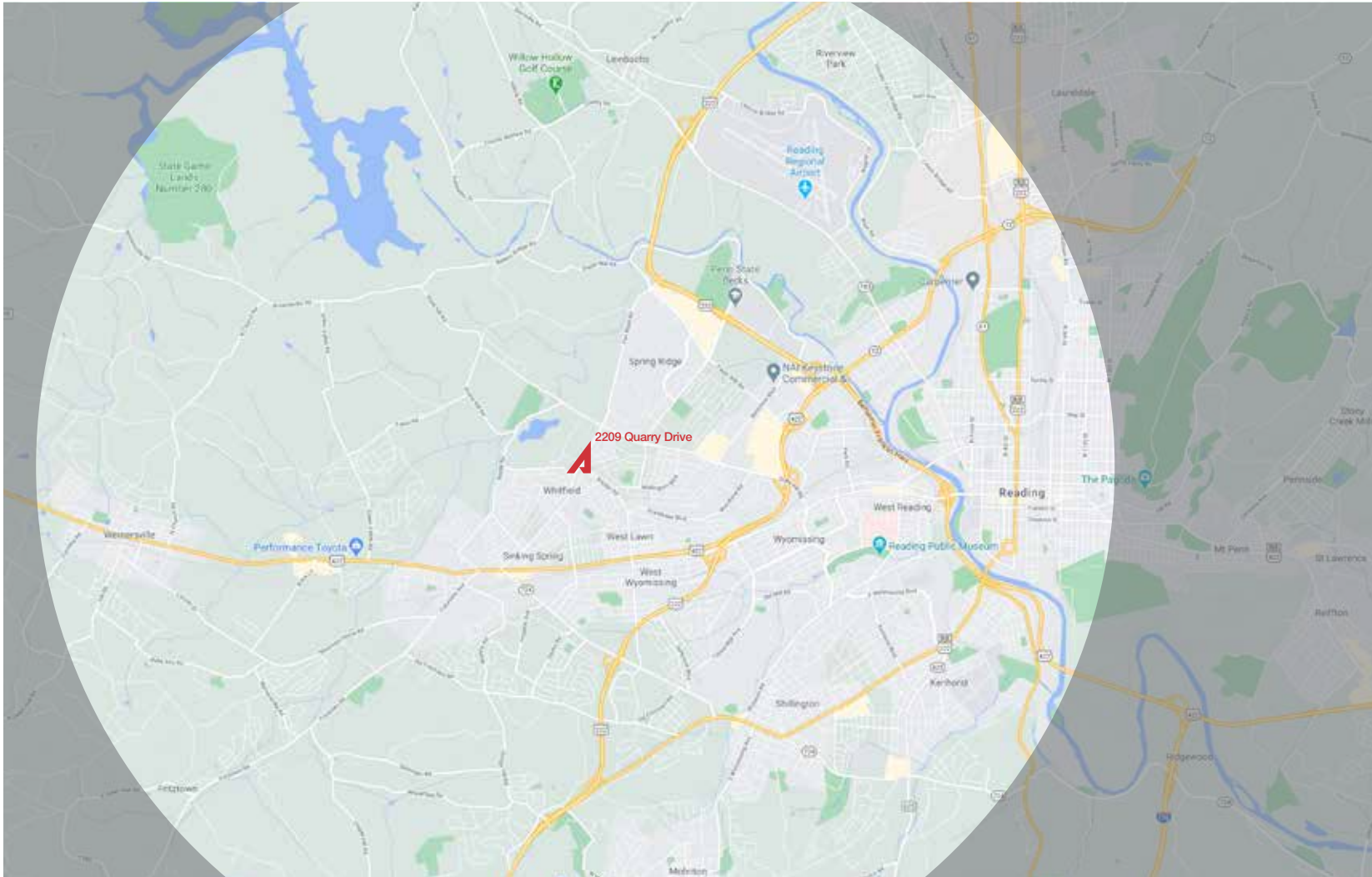
STATUS:
NOT FINAL
 PRINTED:
02/20/2019
 SHEET NO.
C-30

JOHN BUCCINNO, SIOR CCIM
 610.370.8508
 JBUCCINNO@NAIKEYSTONE.COM

VAN REED OFFICE CENTER
 2209 QUARRY DR | WEST LAWN, PA 19609
 1,176 - 1,445 SQ FT AVAILABLE FOR LEASE

NAIKeystone

875 BERKSHIRE BLVD, STE 102,
 WYOMISSING, PA 19610
 610.779.1400 | NAIKEYSTONE.COM



DEMOGRAPHICS
VAN REED OFFICE CENTER

EST. POPULATION
177,350

EST AVG HH INCOME
\$70,982

EST TOTAL EMPLOYEES
83,221

EST POPULATION
1 MI | 10,016
3 MI | 50,707
5 MI | 177,350

EST TOTAL EMPLOYEES
1 MI | 4,935
3 MI | 25,548
5 MI | 83,221

EST AVG HH INCOME
1 MI | \$98,664
3 MI | \$95,384
5 MI | \$70,982

JOHN BUCCINNO, SIOR CCIM
610.370.8508
JBUCINNO@NAIKEYSTONE.COM

VAN REED OFFICE CENTER

2209 QUARRY DR | WEST LAWN, PA 19609

1,176 - 1,445 SQ FT AVAILABLE FOR LEASE

NAIKeystone

875 BERKSHIRE BLVD, STE 102,
WYOMISSING, PA 19610
610.779.1400 | NAIKEYSTONE.COM



JOHN BUCCINNO, SIOR CCIM
610.370.8508
JBUCINNO@NAIKEYSTONE.COM

VAN REED OFFICE CENTER

2209 QUARRY DR | WEST LAWN, PA 19609

1,176 - 1,445 SQ FT AVAILABLE FOR LEASE

NAIKeystone

875 BERKSHIRE BLVD, STE 102,
WYOMISSING, PA 19610
610.779.1400 | NAIKEYSTONE.COM