



**McNulty Group**  
Incorporated

# FOR LEASE

7800 Bayshore Rd, Palmetto, FL 34221

**Approved for Outdoor Storage**



 Usable Land	7.5 Acres
Lease Rate	<b>\$7,500 + NNN</b> <b>Per Acre</b> <b>Per Month</b>



McNulty Group, Inc. is the agent of the Landlord or Seller of this property and will be paid by the Landlord or Seller. All information furnished with respect to the subject property has been obtained from sources deemed reliable. No representation as to accuracy thereof is made. This offering is subject to errors, omissions, prior sales or withdrawal without notice.

**JOHN MASON**

Sales Associate

John@mcnultygroupinc.com

239-919-2731

**McNulty Group Inc.**

2315 Lynx Lane, Suite 6

Orlando, Florida 32804

407-532-3441

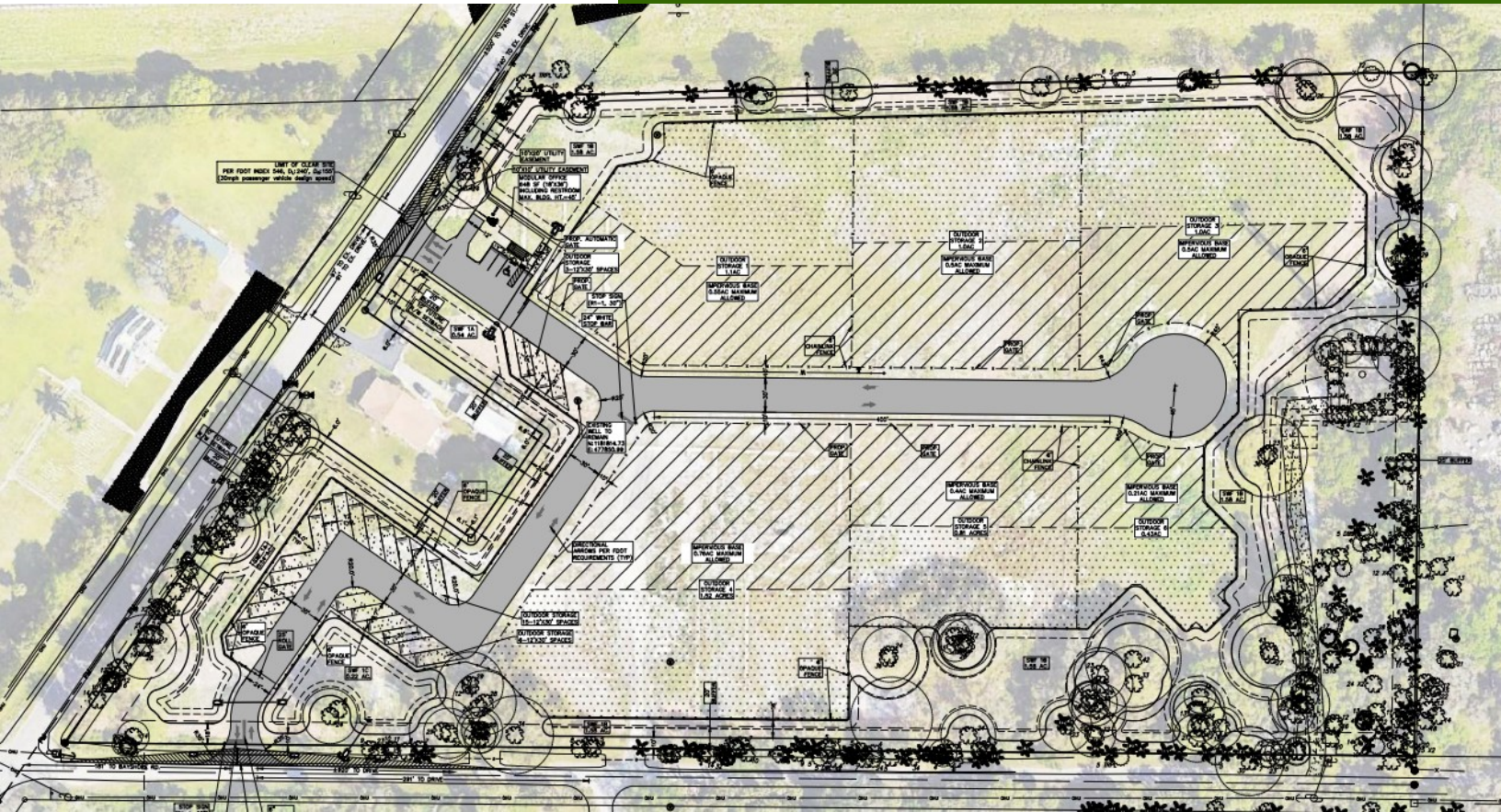




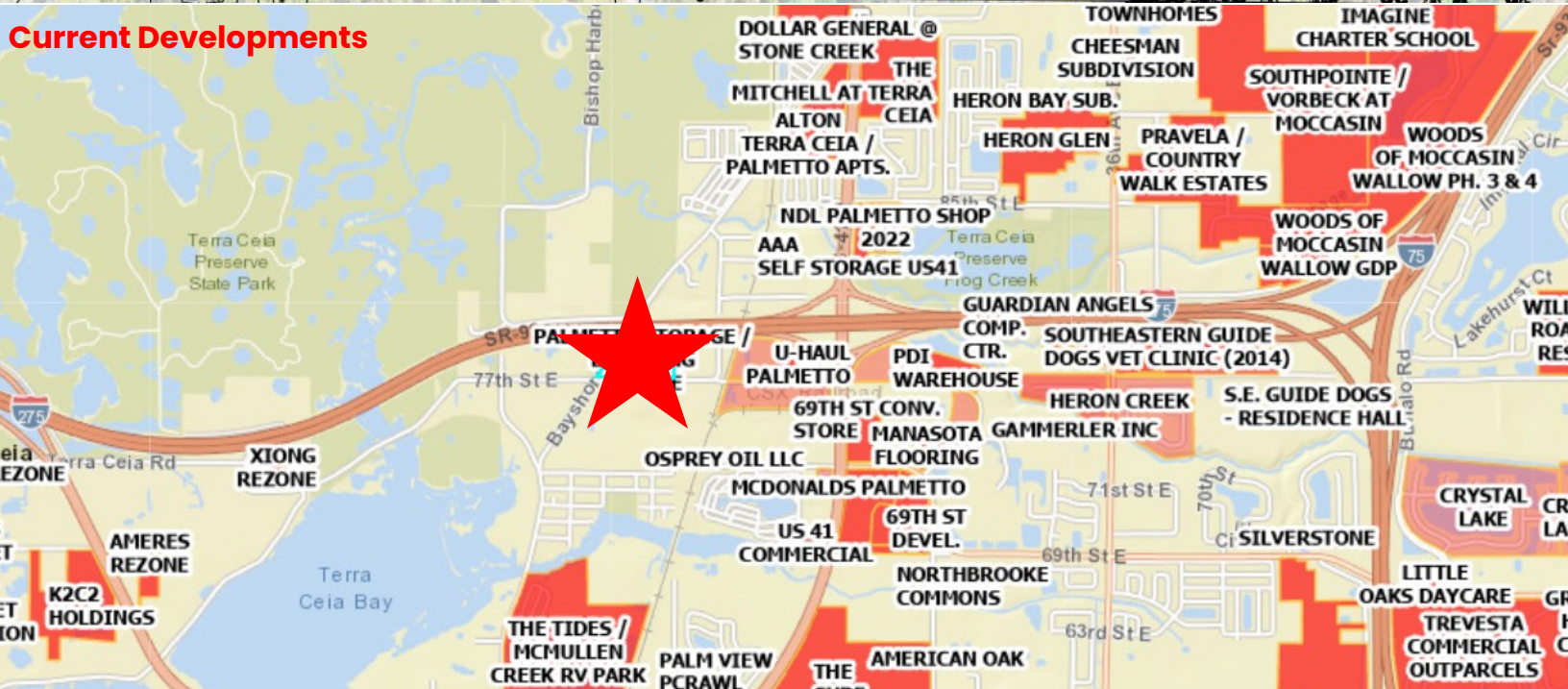
**McNulty Group**  
Incorporated

# FOR LEASE

7800 Bayshore Rd, Palmetto, FL 34221



## Current Developments



**JOHN MASON**

Sales Associate

John@mcnultygroupinc.com

239-919-2731

mcnultygroupinc.com

**McNulty Group Inc.**

2315 Lynx Lane, Suite 6

Orlando, Florida 32804

407-532-3441