

Alliance Industrial Park

3716 - 3720 Alliance Drive | Greensboro, NC 27407



- ◆ Available For Lease
- ◆ From 4,272 SF - 18,294 SF
- ◆ Ceiling Heights: 15.5' - 18' clear
- ◆ Ready To Occupy
- ◆ Dock High Doors
- ◆ Drive-in Door

Industrial space conveniently located off West Wendover Avenue and Norwalk Street with quick access to Interstate 40.

The spaces have flexible floor plans with plenty of parking with good truck access.

Call for more details on the availabilities.



JJ Joubran, CCIM

(336) 270-9775

JJ@JoubranCommercial.com

Alliance Industrial Park

3716 - 3720 Alliance Drive | Greensboro, NC 27407



JJ Joubran, CCIM

(336) 270-9775

JJ@JoubranCommercial.com



Alliance Industrial Park

3716 - 3720 Alliance Drive | Greensboro, NC 27407

Move-in Ready Suites Available

Office Improvements

- ❖ New Paint
- ❖ New LED Lighting
- ❖ New LVT Flooring
- ❖ New Bathrooms

Warehouse Improvements

- ❖ New Concrete Truck Court
- ❖ New White Boxed Walls
- ❖ New LED Lighting
- ❖ New Concrete Truck Court



JJ Joubran, CCIM

(336) 270-9775

JJ@JoubranCommercial.com

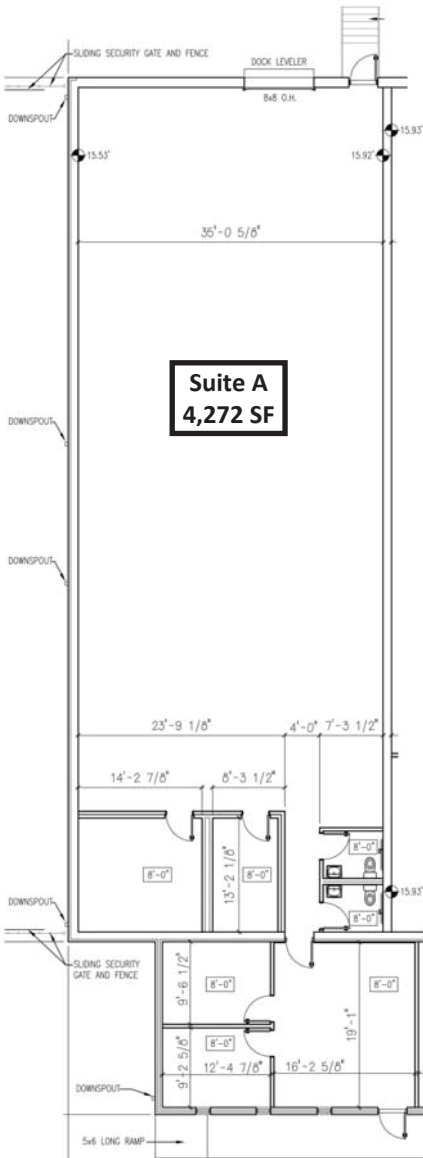


Alliance Industrial Park

3716 Alliance Drive | Greensboro, NC 27407

3716-A Alliance Drive

- ❖ Size: 4,272 SF
- ❖ Warehouse Space: 3,136 SF
- ❖ Office Space: 1,136 SF
- ❖ Clear Height: 15.5'
- ❖ Dock High Doors: 1 (8' x 8')
- ❖ Drive-In Doors: 0



JJ Joubran, CCIM

(336) 270-9775

JJ@JoubranCommercial.com

Alliance Industrial Park

3718 Alliance Drive | Greensboro, NC 27407

3718-C Alliance Drive

- ❖ Size: 4,291 SF
- ❖ Warehouse Space: 3,616 SF
- ❖ Office Space: 675 SF
- ❖ Clear Height: 14' 8.5" ACT and 17' clear
- ❖ Dock High Doors: 1 (8' x 8')
- ❖ Drive-In Doors: 0



JJ Joubran, CCIM

(336) 270-9775

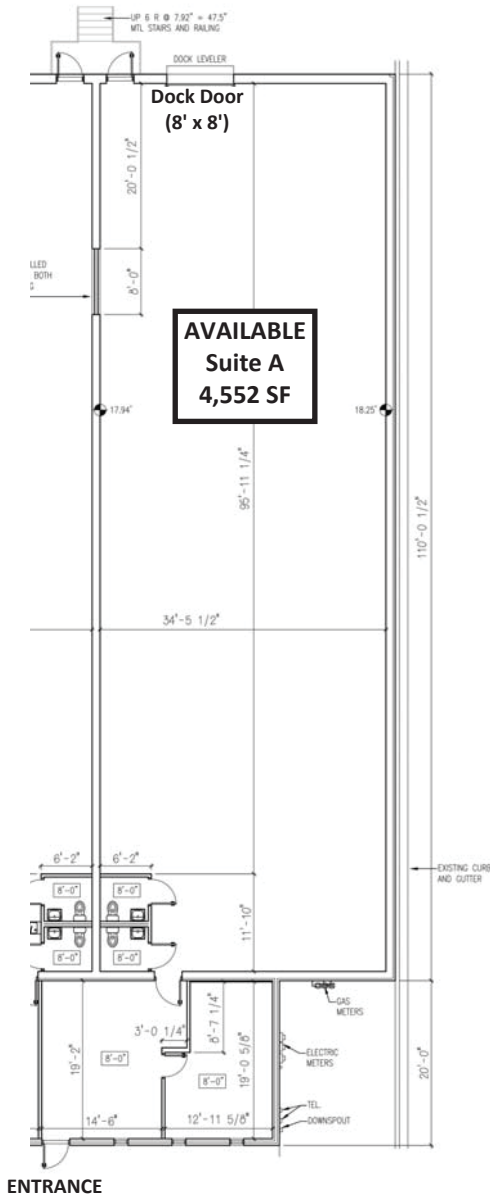
JJ@JoubranCommercial.com

Alliance Industrial Park

3720 Alliance Drive | Greensboro, NC 27407

3720-A Alliance Drive

- ❖ Size: 4,552 SF
- ❖ Warehouse Space: 3,958 SF
- ❖ Office Space: 594 SF
- ❖ Clear Height: 18'
- ❖ Dock High Doors: 1 (8' x 8')
- ❖ Drive-In Doors: 0



JJ Joubran, CCIM

(336) 270-9775

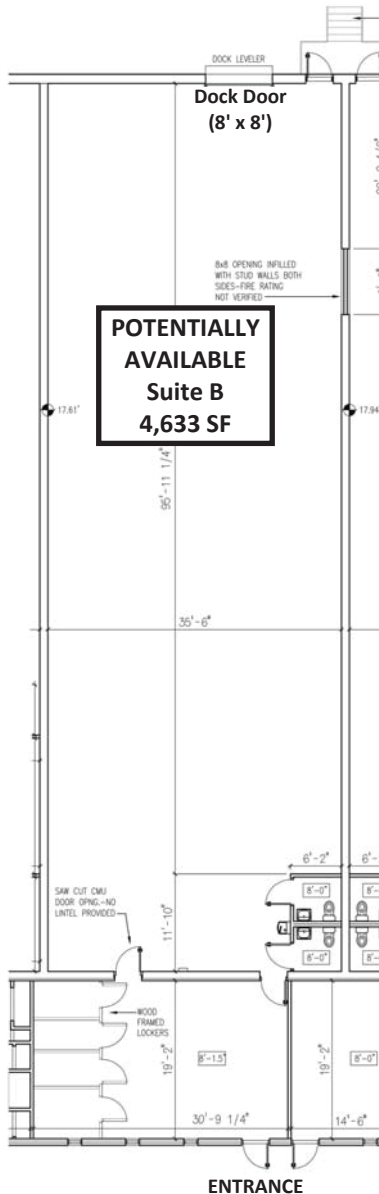
JJ@JoubranCommercial.com

Alliance Industrial Park

3720 Alliance Drive | Greensboro, NC 27407

3720-B Alliance Drive

- ❖ Size: 4,633 SF
- ❖ Warehouse Space: 3,992 SF
- ❖ Office Space: 641 SF
- ❖ Clear Height: 17.6'
- ❖ Dock High Doors: 1 (8' x 8')
- ❖ Drive-In Doors: 0



JJ Joubran, CCIM
(336) 270-9775
JJ@JoubranCommercial.com

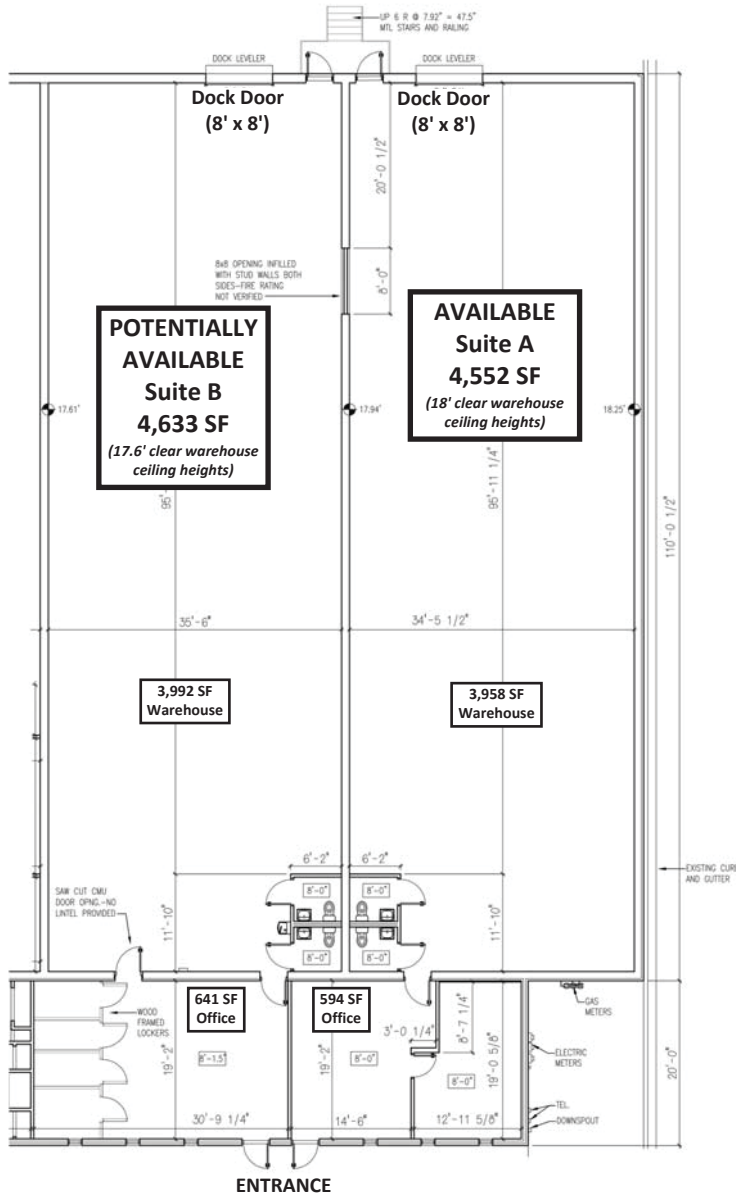


Alliance Industrial Park

3720 Alliance Drive | Greensboro, NC 27407

3720-A&B Alliance Drive

- ❖ Size: 9,185 SF
- ❖ Warehouse Space: 7,950 SF
- ❖ Office Space: 1,235 SF
- ❖ Clear Height: 17.6' - 18'
- ❖ Dock High Doors: 2 (8' x 8')
- ❖ Drive-In Doors: 0
- ❖ Can be subdivided



JJ Joubran, CCIM

(336) 270-9775

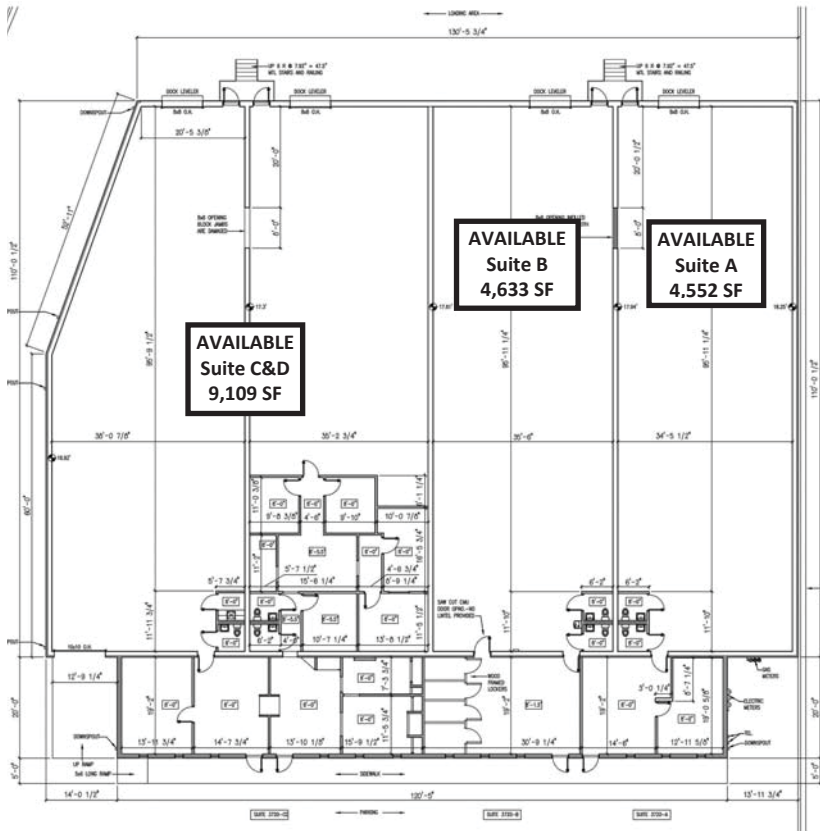
JJ@JoubranCommercial.com

Alliance Industrial Park

3720 Alliance Drive | Greensboro, NC 27407

3720-ABC&D Alliance Drive

- ❖ Size: 18,294 SF
- ❖ Warehouse Space: 14,524 SF
- ❖ Office Space: 3,770 SF
- ❖ Clear Height: 17' - 18'
- ❖ Dock High Doors: 4 (8' x 8')
- ❖ Drive-In Doors: 1
- ❖ Can be subdivided



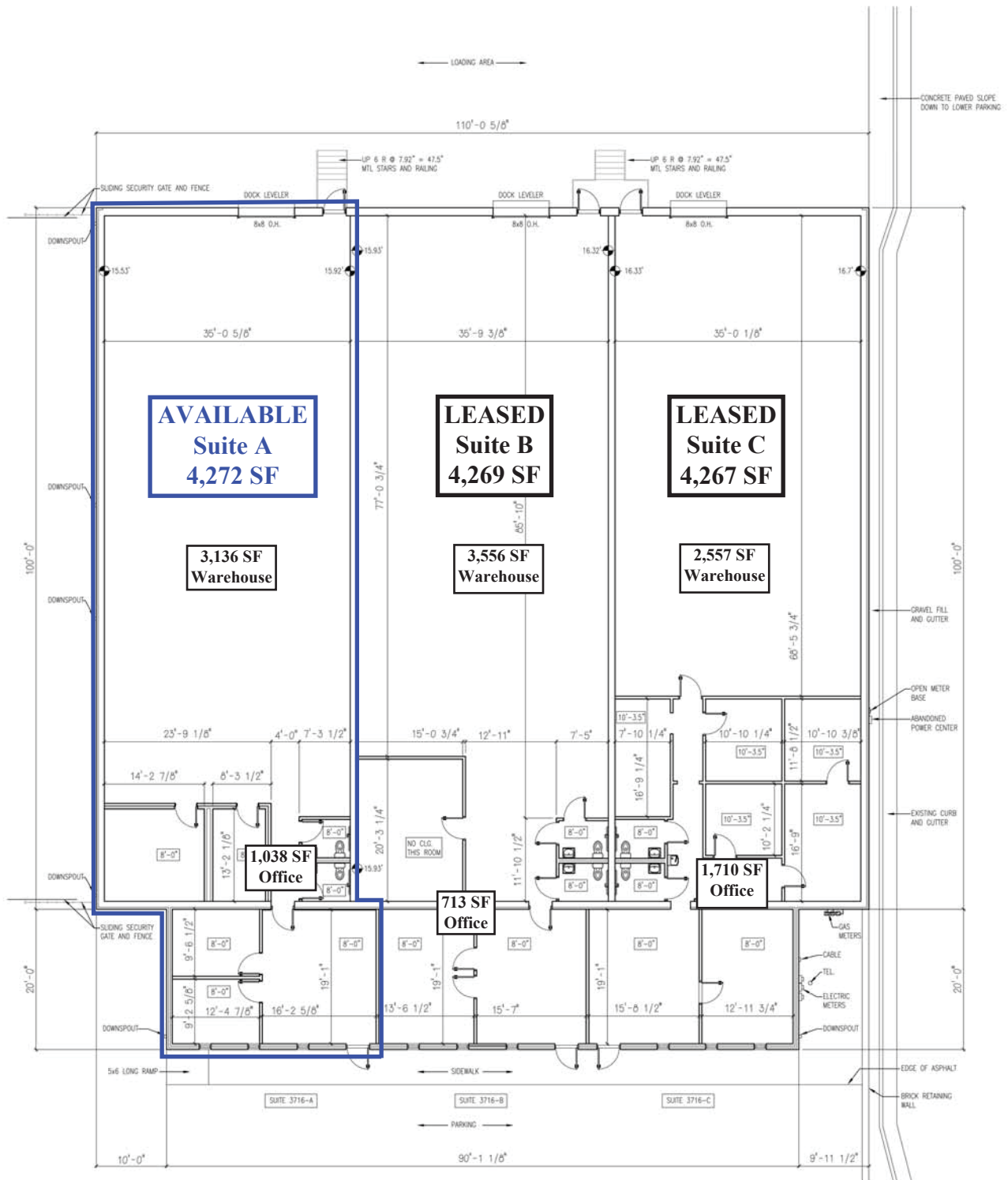
JJ Joubran, CCIM

(336) 270-9775

JJ@JoubranCommercial.com

3716 Alliance Drive

4,272 SF



Contact:

JJ Joubran, CCIM

Joubran Commercial Properties

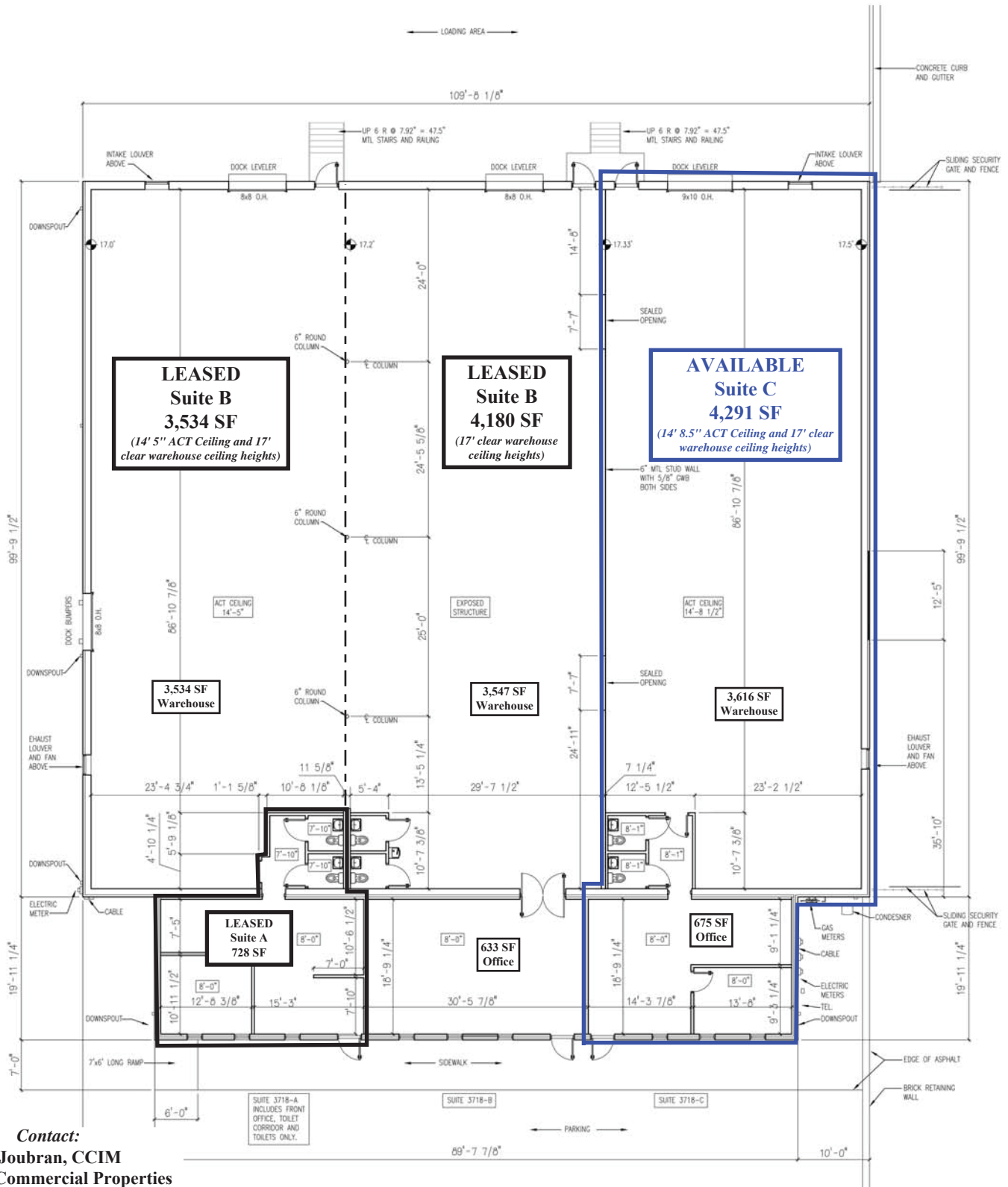
(336) 270-9775

JJ@JoubranCommercial.com

www.JoubranCommercial.com

3718 Alliance Drive

4,291 SF



Contact:

JJ Joubran, CCIM

Joubran Commercial Properties

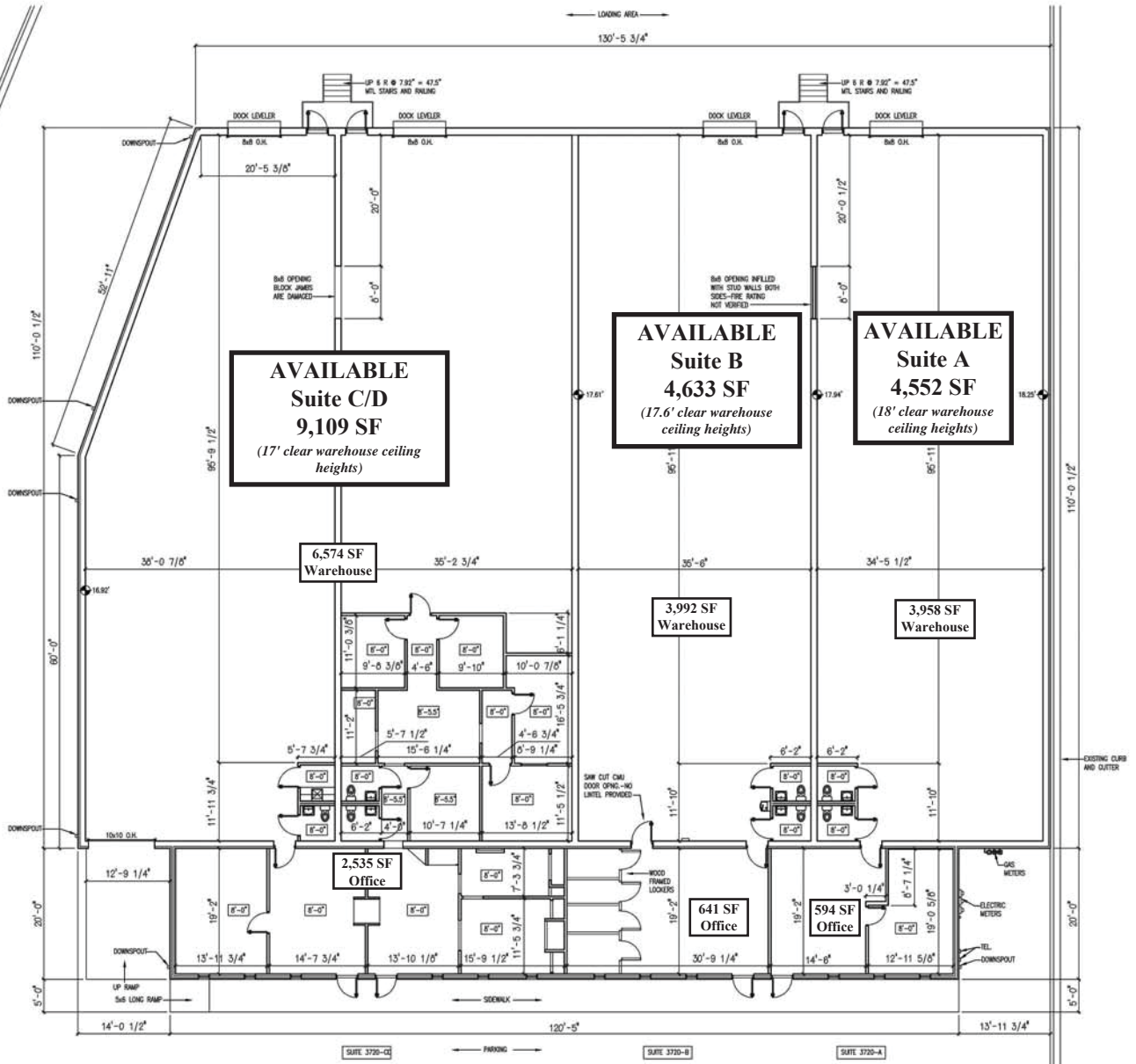
(336) 270-9775

JJ@JoubranCommercial.com

www.JoubranCommercial.com

3720 Alliance Drive

From 4,552 - 18,294 SF



Contact:
JJ Joubran, CCIM
Joubran Commercial Properties
(336) 270-9775
JJ@JoubranCommercial.com
www.JoubranCommercial.com