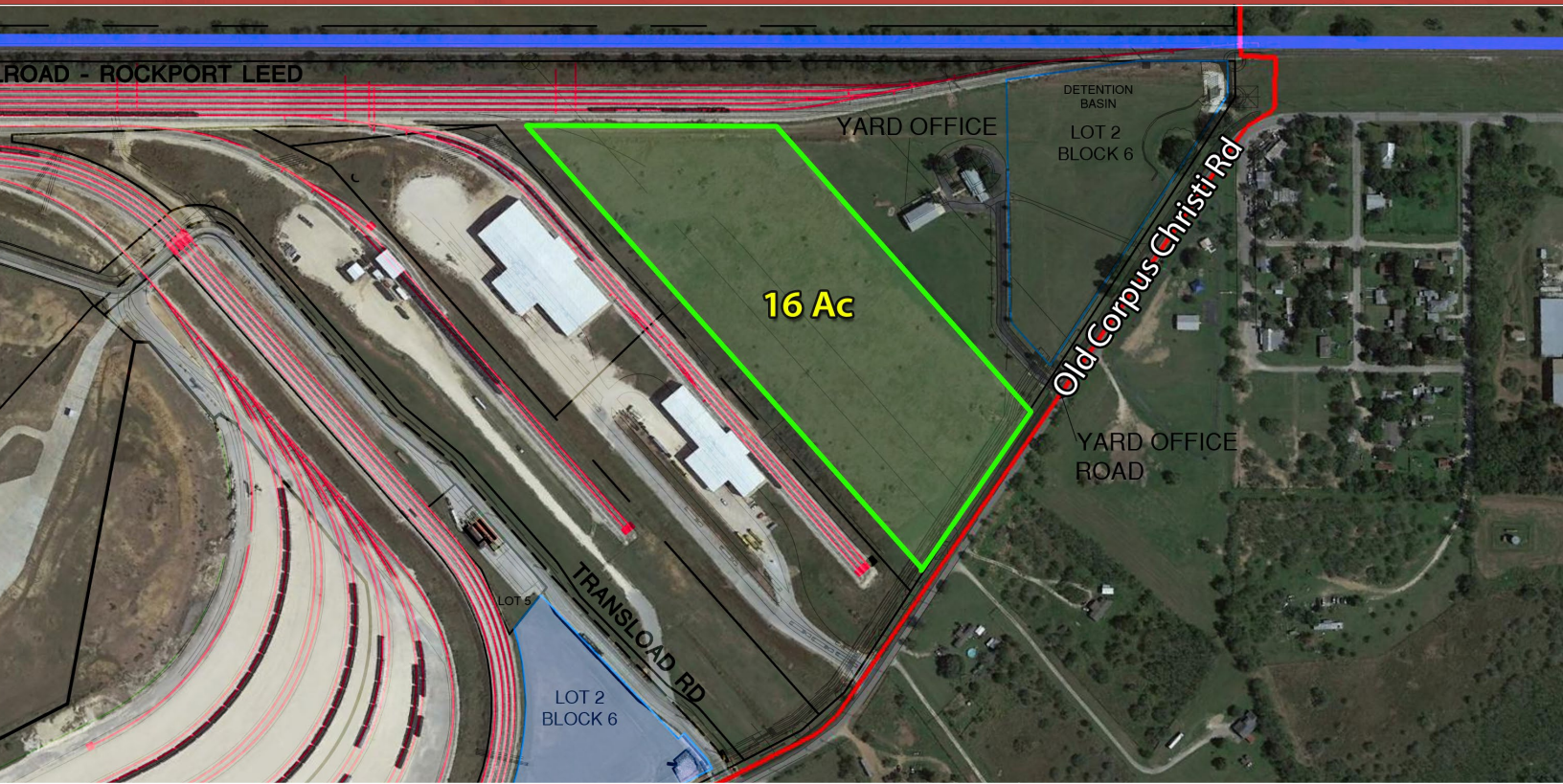


FOR LEASE, BUILD-TO-SUIT OR DESIGN-BUILD



## Part of a 520 Acre Master-Planned Rail-Served Industrial Park

### Property Details

- City of Elmendorf
- Platted & Rough Graded
- 760' of Old Corpus Christi Rd Frontage
- Electricity and Water Available, Septic Required
- Regional Detention

### Development Info

- Dual Rail Service Offering Competitive Pricing (UP & BNSF)
- State-of-the-Art Rail Terminal & Transload Facility
- Over 15 miles of Internal Track Developed to Date
- Easy Access to Park via IH-37, Loop 1604 & Highway 181



16456 Old Corpus Christi Rd  
Elmendorf, TX 78112

Developer:



Rail Operator:



Real Estate Broker:



For Information:  
John Greg Turcotte  
210.710.8966  
[jg@turcotteres.com](mailto:jg@turcotteres.com)

