

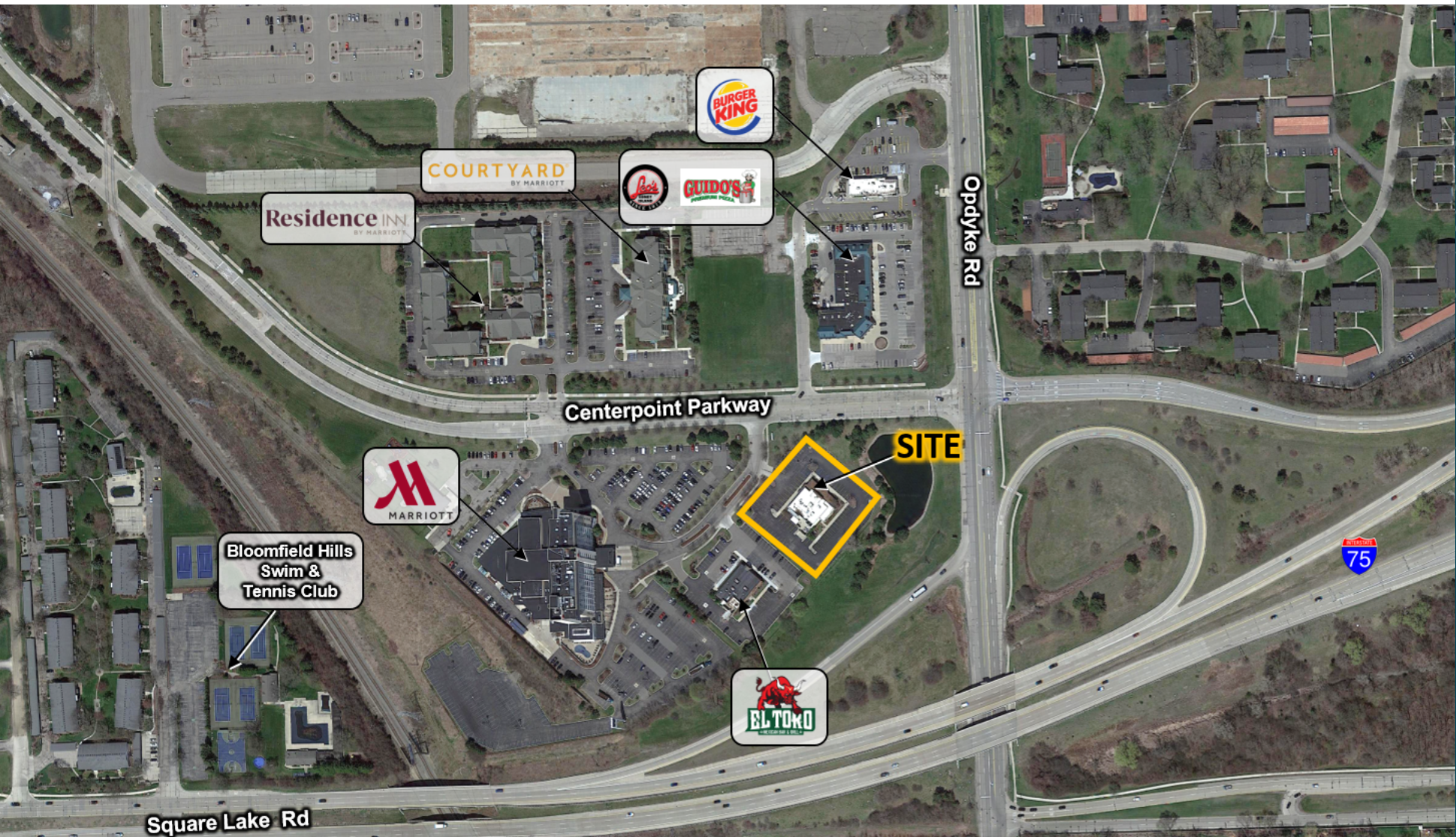
VACANT PAD SITE



MID-AMERICA[®]
Real Estate-Michigan, Inc.

AVAILABLE NOW

3900 Centerpoint Parkway / Pontiac, MI



RETAIL OPPORTUNITY

VACANT PAD SITE



Address

3900 Centerpoint Parkway
Pontiac, MI 48341

Availability

1.66 Acres

Features

This pad site is on the corner of Opdyke and Square Lake Roads, within walking distance to three hotels. The property benefits from excellent visibility on Opdyke Road and has a strong daytime population, digital marquis signage and ample parking. Strong household incomes in the area and very close to the affluent Bloomfield communities. Great opportunity for both medical and retail users.

Area Tenants

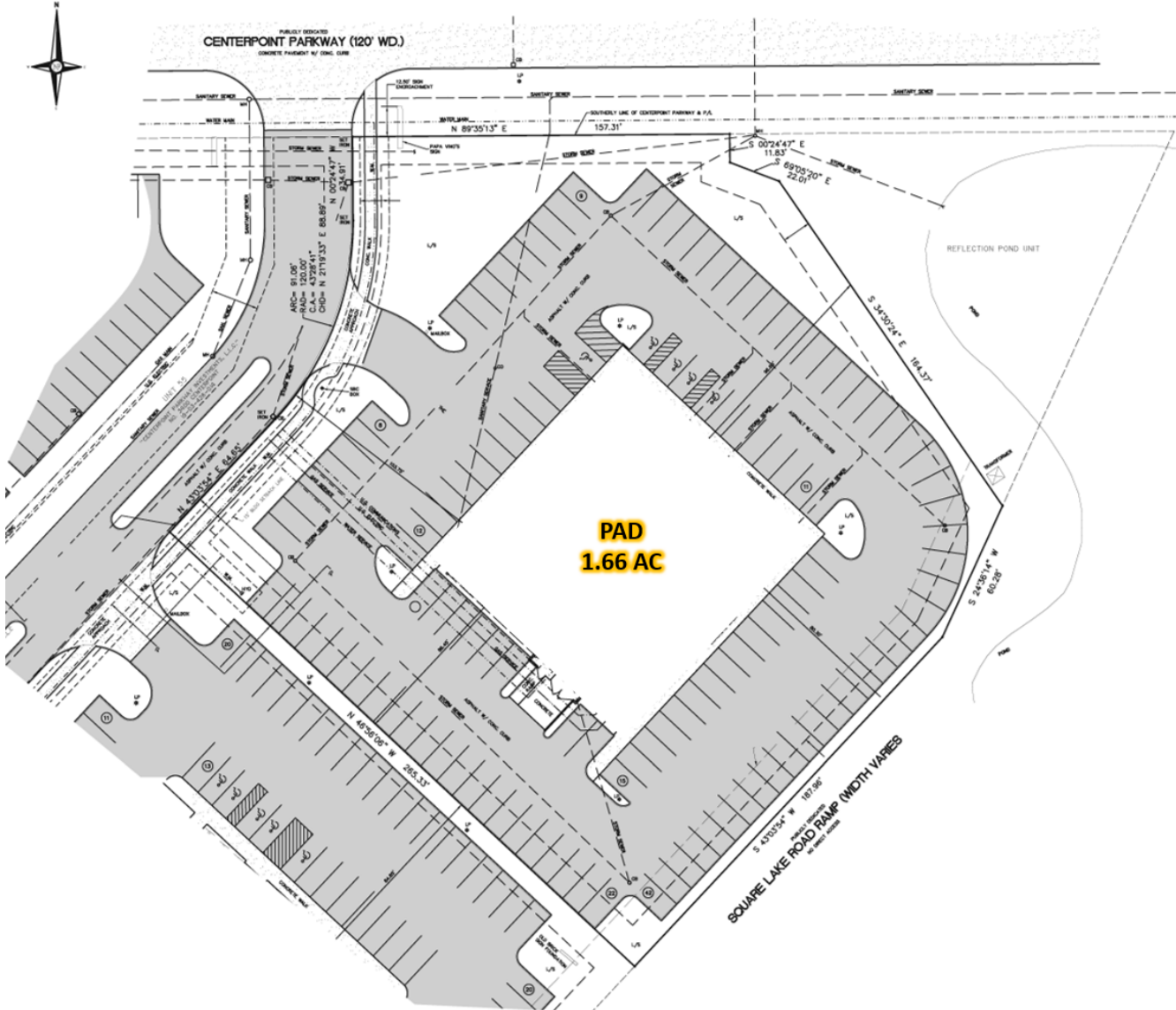


Demographics (2020)

	1 MILE	5 MILES	10 MILES
POPULATION	6,411	162,812	743,385
HOUSEHOLDS	2,751	63,900	302,117
AVG HOUSEHOLD INCOME	\$152,028	\$131,534	\$113,766
DAYTIME POPULATION	7,504	195,596	810,921

This information contained herein has either been given to us by the owner of the property or obtained from sources that we deem reliable. We have no reason to doubt its accuracy but we do not guarantee it.

VACANT PAD SITE



VACANT PAD SITE

Karen
Gargaro

Mid-America Real Estate –
Michigan Inc.
T: 248.855.6800
KGargaro@MidAmericaGrp.com



38500 Woodward Avenue
Suite 100
Bloomfield Hills, MI 48304
248.855.6800
MidAmericaGrp.com



CONTACT