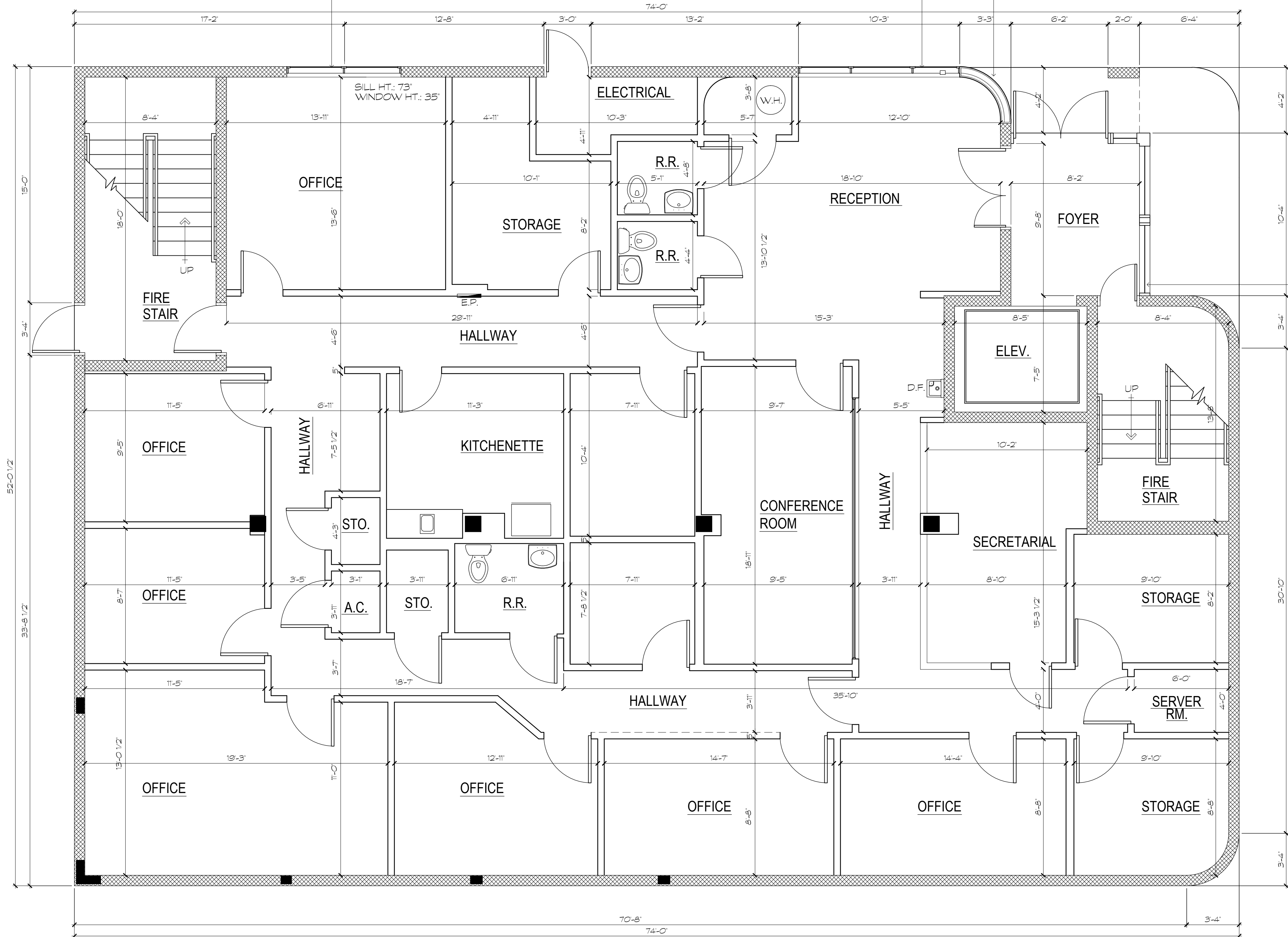


THE ARCHITECT RECOMMENDS A PRECONSTRUCTION MEETING BETWEEN THE ARCHITECT, OWNER AND SELECTED CONTRACTOR TO DISCUSS CONSTRUCTION ITEMS AND ANSWER ANY QUESTIONS THAT MIGHT ARISE.

REMOVE ALL EXTERIOR WINDOW AND DOOR HURRICANE PROTECTION MOUNTING TRACKS
REMOVE ALL EXISTING EXTERIOR GLASS DOORS AND WINDOWS IN PREPARATION FOR FUTURE REPLACEMENT.
NEW IMPACT-RESISTANT STOREFRONT DOORS AND WINDOWS SHALL BE INSTALLED ACCORDING TO TESTED PRODUCT APPROVAL (N.O.A.) UNDER SEPARATE PERMIT

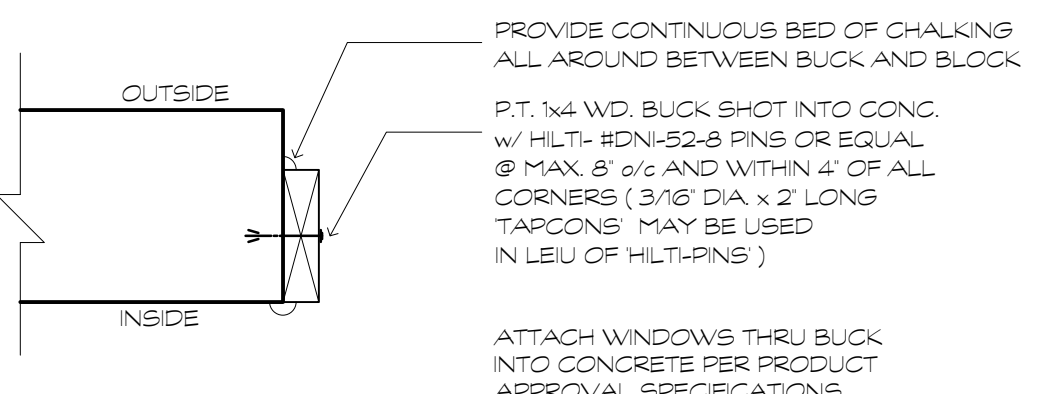
NOTE EXISTING RADIUS GLASS WINDOW TO BE REMOVED AND INFILL W/ NEW METAL FRAMING AND STUCCO FINISH TO MATCH EXISTING (SEE DETAIL ON THIS SHEET)



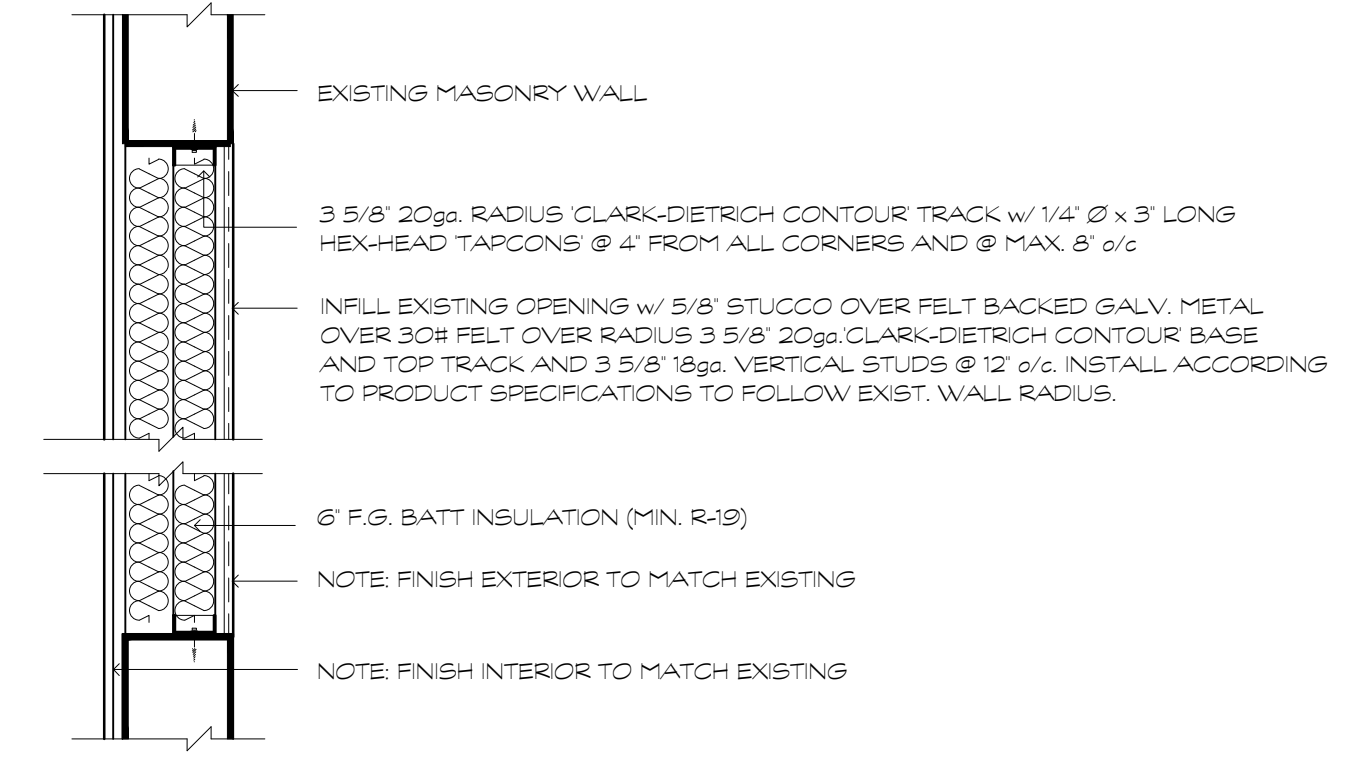
REMOVE ALL EXISTING EXTERIOR GLASS DOORS AND WINDOWS IN PREPARATION FOR FUTURE REPLACEMENT
NEW IMPACT-RESISTANT STOREFRONT DOORS AND WINDOWS SHALL BE INSTALLED ACCORDING TO TESTED PRODUCT APPROVAL (N.O.A.) UNDER SEPARATE PERMIT
REMOVE ALL EXTERIOR WINDOW AND DOOR HURRICANE PROTECTION MOUNTING TRACKS

Ground Floor Plan
1/4" = 1'-0"

NOTE: ALL NEW WINDOWS SHALL BE IMPACT RESISTANT. SUBMIT SHOP DRAWINGS AND PRODUCT APPROVALS (N.O.A.s) FOR APPROVAL PRIOR TO FABRICATION AND INSTALLATION.



1 DETAIL
Window and Door Bucks
N.T.S.



2 DETAIL
Exterior Radius Wall Infill
N.T.S.

Designed By:	RV
Drawn By:	NSV/dks
Date:	1-13-15
Job No.:	113

