



550 Smithtown  
Bypass Suite 101  
Smithtown, NY 11787  
Office: (631) 656-0360  
Fax: (631) 656-0359

# For Sale

886 Rte. 25A

Miller Place, NY 11764



## PROPERTY FEATURES

- Lot Size: +/- 0.75 Acres
- Zoning: J2 - Town of Brookhaven
- Taxes: +/- \$9,899.79
- On Highly-Trafficked Rte. 25A
- Parking Lot (Easily Accommodates Large Deliveries)
- 2 Sheds, 2 Electric Meters, 1,000 Gallon Propane Tank
- Fenced Perimeter w/ Gate Entrances
- 2 Curb Cuts

Asking Price: \$795,000

\*Property for sale, not the business.  
As the business is still operational,  
we kindly ask that the sale remains  
confidential.

FOR MORE INFORMATION

Jack Jawdat

Cell: (631) 838-8788

Office: (631) 656-0360

Email: [jjawdat@nycreli.com](mailto:jjawdat@nycreli.com)

NEW YORK COMMERCIAL  
REAL ESTATE

[Nycreli.com](http://Nycreli.com)

Check us out on Social Media!





**550 Smithtown  
Bypass Suite 101  
Smithtown, NY 11787  
Office: (631) 656-0360  
Fax: (631) 656-0359**

# Executive Summary

**Property Address: 886 Rte. 25A  
Miller Place, NY 11764**

**Property Description/Type: Land/Nursery**

**Lot Size: +/- 0.75 AC**

**Frontage: +/- 200' on Rte. 25A**

**Parking: Ample**

- **Customer Lot**
- **Additional Fenced-In Parking**
- **Large Delivery Accessible**

**Electric Service: Two Metered Units**

**1,000 Gallon Propane Tank on Premise (Permit Transferrable)**

**Cesspool**

**Three Greenhouses + Framing for Additional Greenhouse(s)**

**2 Sheds**

**2 Curb Cuts**

**Taxes: +/- \$9,899.79**

**Zoning: J2**

**Asking Price: \$795,000**



550 Smithtown  
Bypass Suite 101  
Smithtown, NY 11787  
Office: (631) 656-0360  
Fax: (631) 656-0359

# Photos

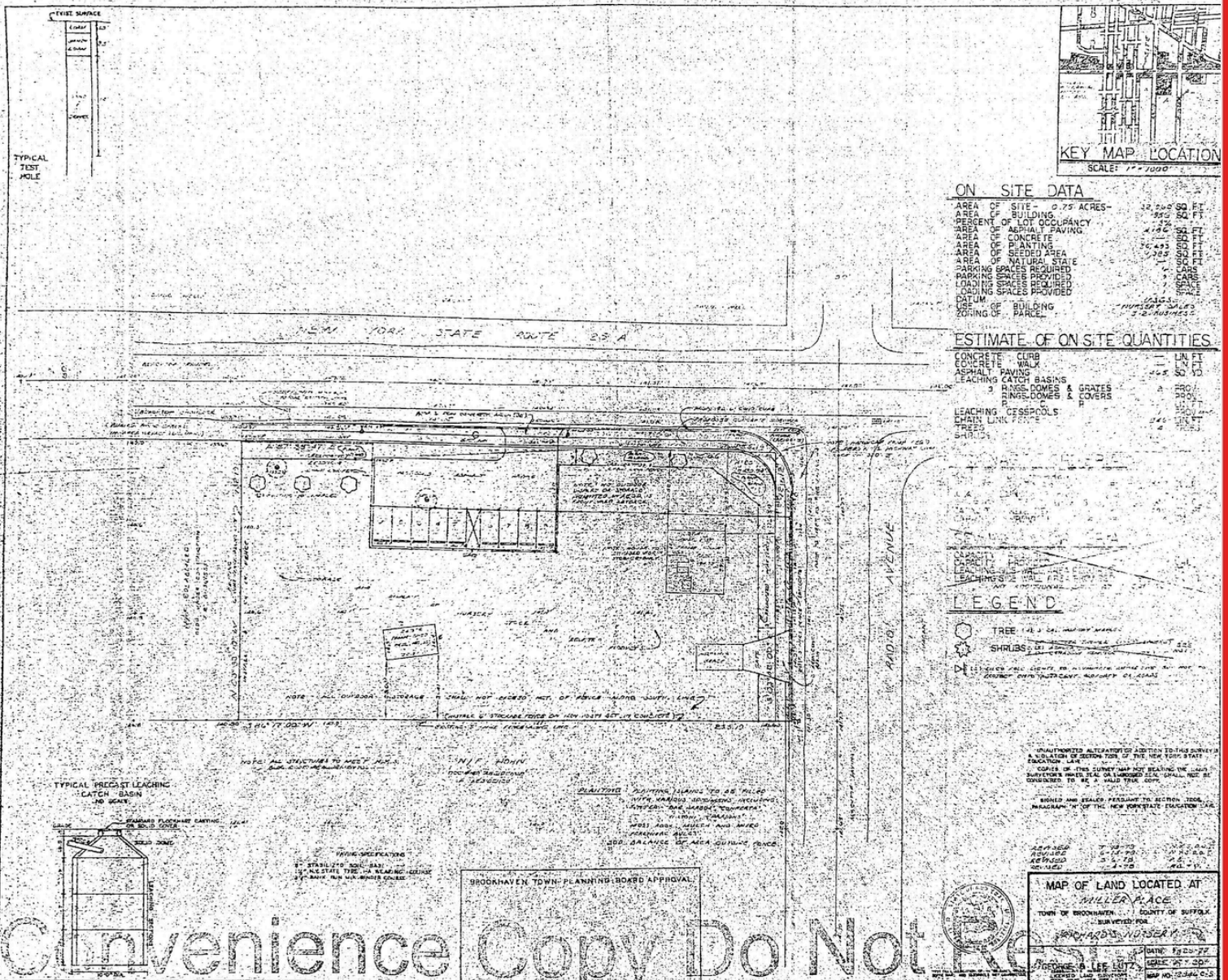




**New York  
Commercial  
Real Estate**

**550 Smithtown  
Bypass Suite 101  
Smithtown, NY 11787  
Office: (631) 656-0360  
Fax: (631) 656-0359**

# Survey



Convenience Copy Do Not Recycle