

**\$450,000**



## **TURNKEY CONVENIENCE STORE IN GROWING RURAL SW FL!**

### **PROPERTY HIGHLIGHTS:**

- Concrete Block (1,440 SF) - Fully Renovated in 2024
- New Shingle Roof & Guttering
- Impact Rated Hurricane Windows & Doors
- Canopied Front & Rear Open Porches
- Excellent Visibility & Easy Access

This family-oriented country store is your opportunity to own a just renovated retail business with modern infrastructure in a growing rural area. Whether continuing as a convenience store or adapting for other commercial uses, the location, improvements, and equipment make this a ready-to-operate investment.

CALL SHERRI DENNING & K.C. STANLEY-LYNN TODAY!



**863-673-0829 or 239-634-6525**



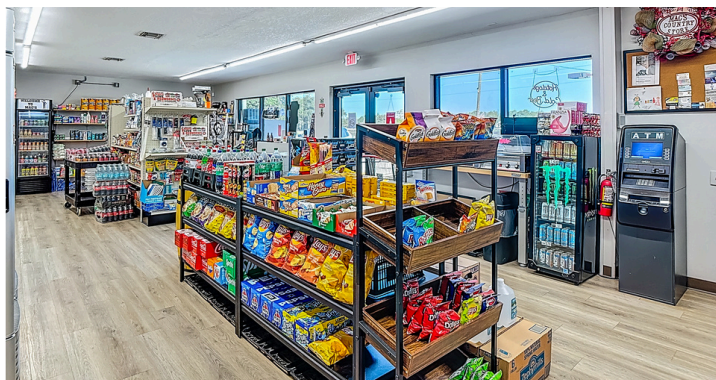
**Sherri@soland.com**



**KC@soland.com**



## INVENTORY & STOCK INCLUDED



**WALK-IN RETAIL BEVERAGE COOLER**



**TWO NEW OUTDOOR STORAGE  
CONTAINERS AND RV HOOK-UP**



**COMMERCIAL-GRADE KITCHEN**



TURNKEY CONVENIENCE STORE IN GROWING RURAL SW FL! This retail convenience store with a commercial kitchen is situated on 0.759 acres in the rural Muse community in Glades County (LaBelle, FL mailing address). The property offers excellent visibility and easy access.



**SOUTHERN HERITAGE REAL  
ESTATE & INVESTMENTS, INC.**

180 N Bridge St., LaBelle, FL 33935



863-675-4500



[www.soland.com](http://www.soland.com)