



2615 Harrisburg Rd NE
Canton, Ohio 44705

SALE PRICE	\$350,000.00
SQ FT	5,240
YEAR BUILT	1969
ZONING	Light Industrial
ACRES	0.456
PARCEL	5204772, 5204770, 5204771
CLEAR HEIGHT	14'
OVER HEAD DOOR	(2) - 12'
TAXES	\$2,554.26/year

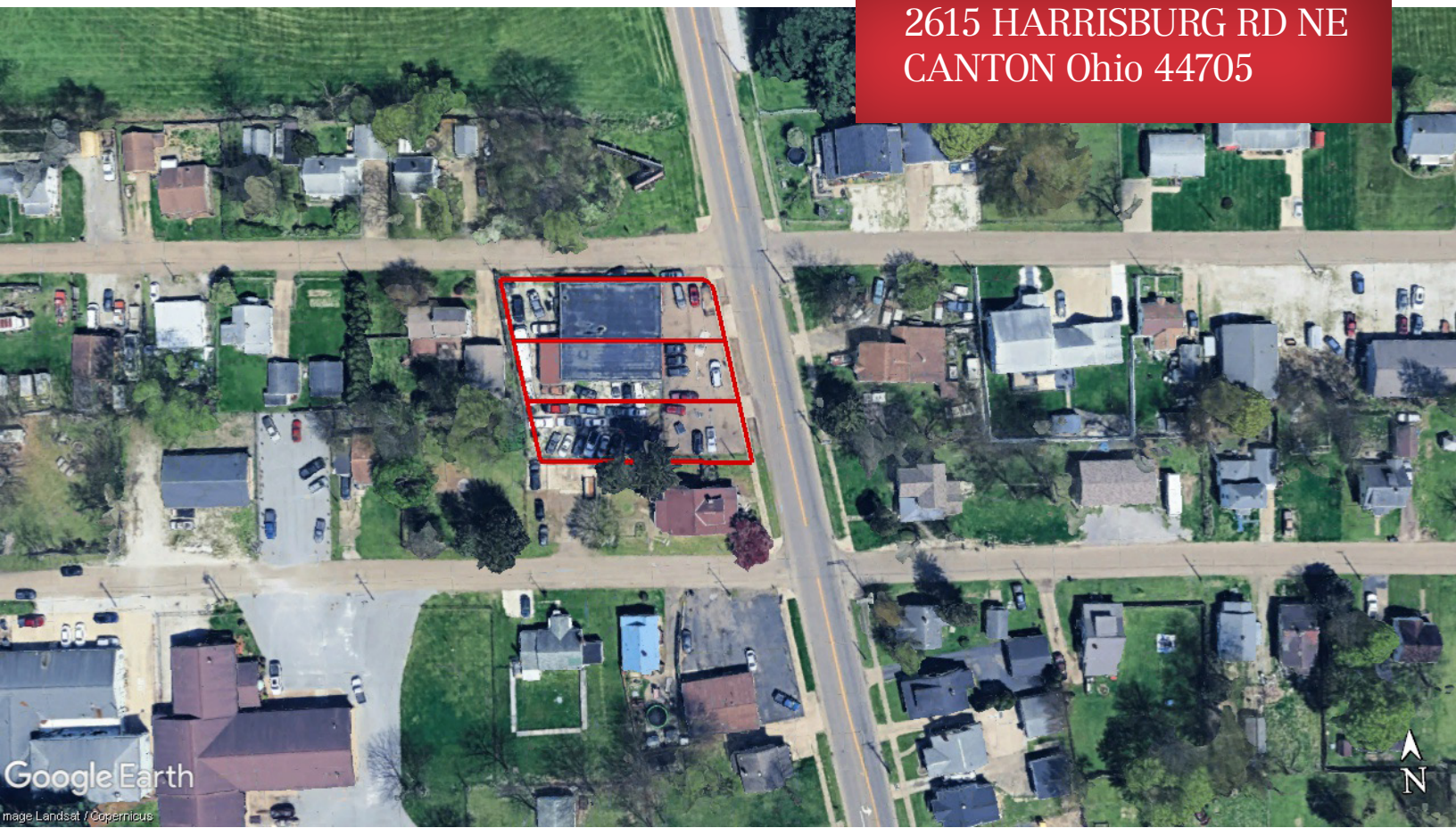
PROPERTY DETAILS

- 5,240 SF industrial building on 0.456 acres.
- 14' clear height with two 12' overhead doors.
- Drive-through building configuration.
- Ideal for auto body, repair shop, detailing, or storage.
- Zoned Light Industrial, permitting a wide range of automotive and light industrial uses .
- Plain Township location — no city income tax.
- Fully fenced yard with secure outdoor storage/parking.
- Security system in place; equipment negotiable.
- Low taxes — \$2,554.26/year

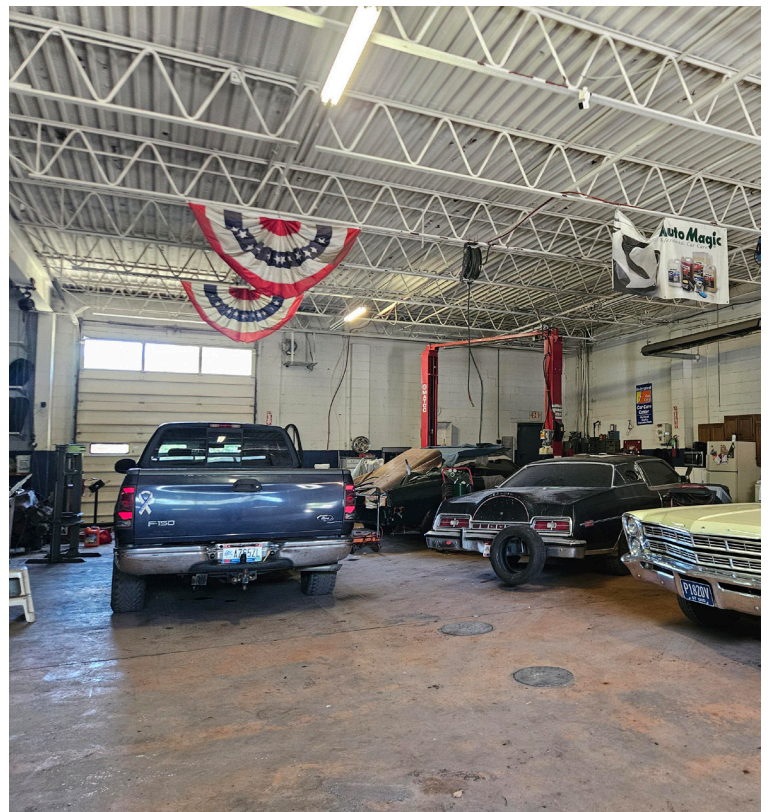
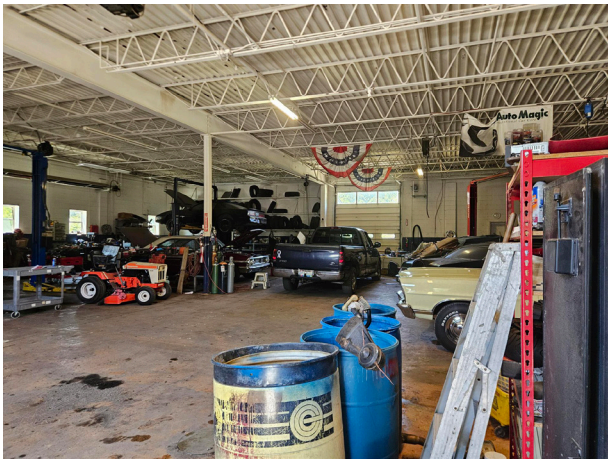
Bryce Custer, SIOR, CCIM

330 418 9287 • bryce@naispring.com

2615 HARRISBURG RD NE
CANTON Ohio 44705



Google Earth
Image Landsat / Copernicus



NO WARRANTY OR REPRESENTATION, EXPRESS OR IMPLIED, IS MADE AS TO THE ACCURACY OF THE INFORMATION CONTAINED HEREIN, AND THE SAME IS SUBMITTED SUBJECT TO ERRORS, OMISSIONS, CHANGE OF PRICE, RENTAL OR OTHER CONDITIONS, PRIOR SALE, LEASE OR FINANCING, OR WITHDRAWAL WITHOUT NOTICE, AND OF ANY SPECIAL LISTING CONDITIONS IMPOSED BY OUR PRINCIPALS NO WARRANTIES OR REPRESENTATIONS ARE MADE AS TO THE CONDITION OF THE PROPERTY OR ANY HAZARDS CONTAINED THEREIN ARE ANY TO BE IMPLIED.

8234 Pittsburg Ave NW
North Canton, OH 44720
+1 330 966 8800
naispring.com