

Available For Lease

2995 Winners Circle
Shakopee, MN 55379



Ryan Krzmarzick, CCIM SIOR
Executive Vice President
+1 952 897 7746
ryan.k@colliers.com

1600 Utica Ave S Ste 300
Minneapolis, MN 55416
+1 952 897 7700
colliers.com/msp



Building Specifications

The Winners Circle drive building is the flagship development which anchors the second phase of the 140-acre development surrounding Canterbury Park. Phase II is focused towards introducing a lifestyle and entertainment district, with plans to surround Winners Circle with retail, hotel and entertainment uses. This first-floor opportunity presents a great opportunity for medical, retail and office users to plant a flag in this dynamic development.

- New construction
- 84 parking stalls
- Onsite ownership and professional management
- Fantastic first floor space for office or retail uses
- Ceiling heights: First floor – 10' + for finished 14' to bar joists (15' to deck) for unfinished
- Easy access to Eagle Creek Blvd and Hwy 169
- Close Proximity to shopping, restaurant amenities and Canterbury Park

Building Size

26,882 SF

Available For Lease

1,000 - 2,808 SF

Net Rates

\$18.50/SF

2026 est. CAM & Tax

\$10.44/SF

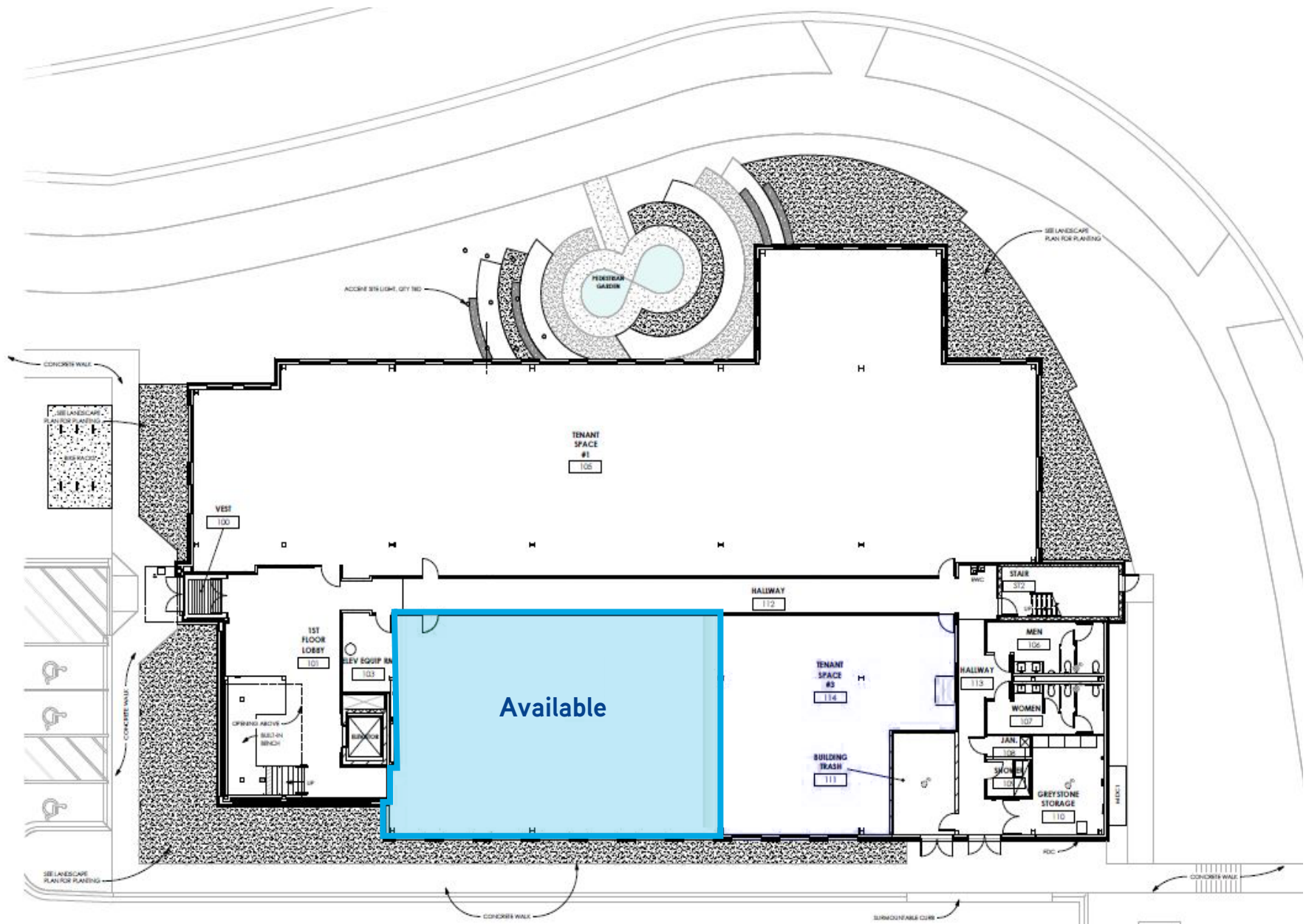
Traffic Counts

Eagle Creek Blvd: 10,500 cars per day

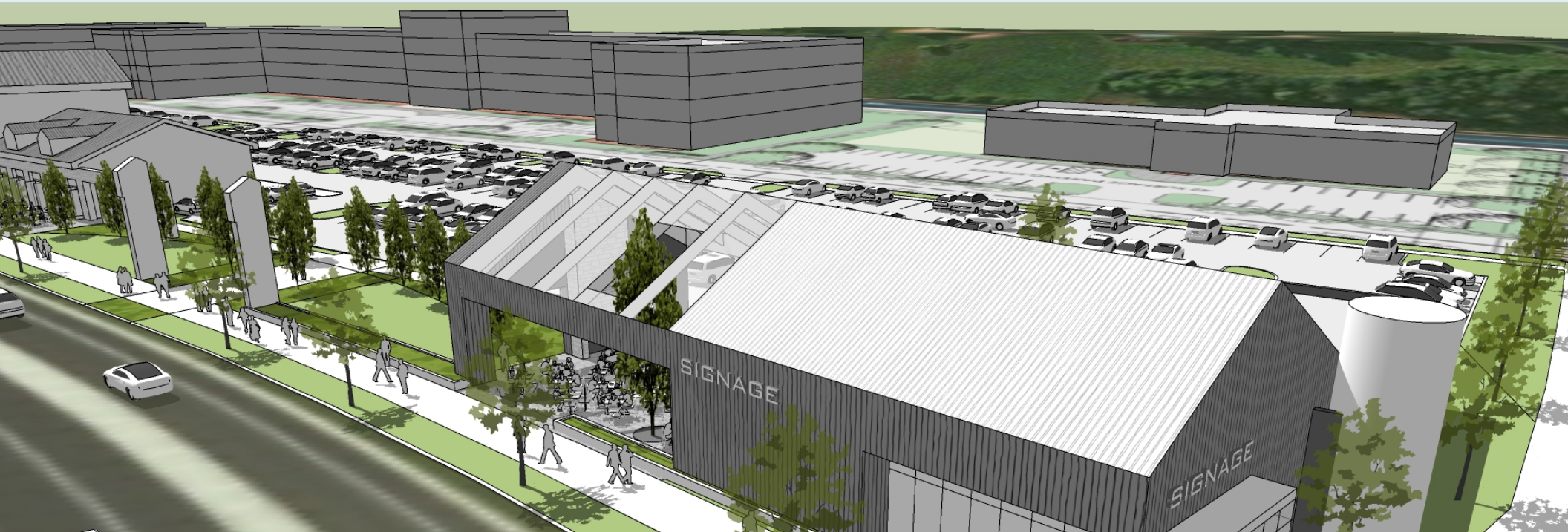
Shenandoah Dr: 3,050 cars per day



1,000 - 2,808 SF Available



Southwest Gateway Site Plan



Colliers

1600 Utica Ave S Ste 300
Minneapolis, MN 55416
P: +1 952 897 7700
colliers.com/msp



This document has been prepared by Colliers International for advertising and general information only. Colliers International makes no guarantees, representations or warranties of any kind, expressed or implied, regarding the information including, but not limited to, warranties of content, accuracy and reliability. Any interested party should undertake their own inquiries as to the accuracy of the information. Colliers International excludes unequivocally all inferred or implied terms, conditions and warranties arising out of this document and excludes all liability for loss and damages arising therefrom. This publication is the copyrighted property of Colliers International and/or its licensor(s). ©2025. All rights reserved.

Ryan Krzmarzick, CCIM SIOR
Executive Vice President
+1 952 897 7746
ryan.k@colliers.com